

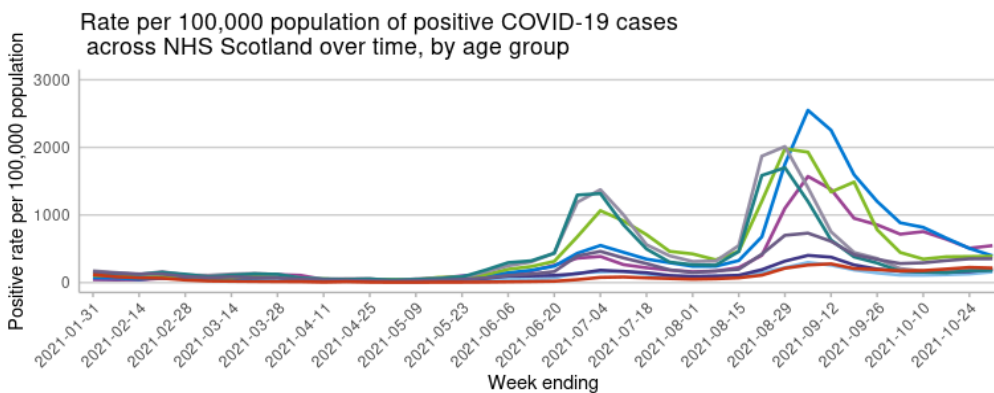
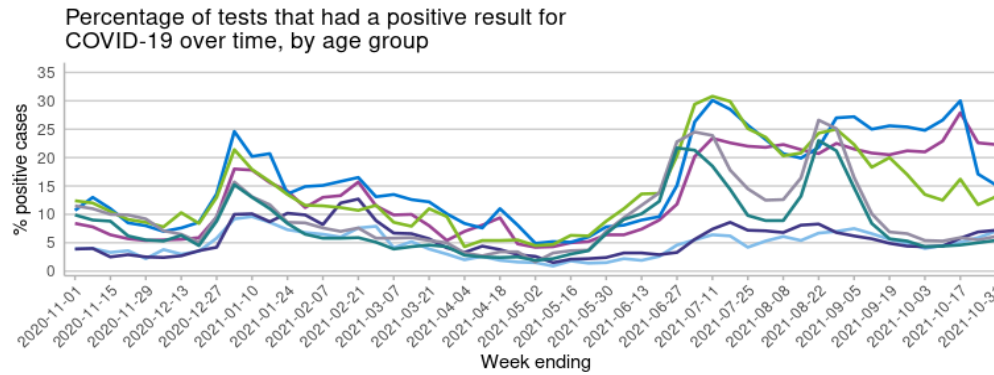
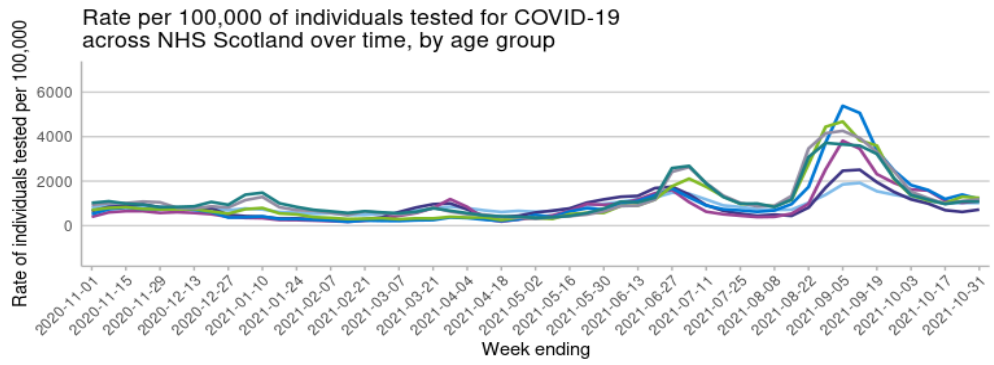
Covid-19 Education Recovery Group - Infographic

In the week ending 31st October 2021:

- The rate of testing was 976.0 per 100,000 children and young people aged 2-17 years.
- The percentage of tests that were positive was 16.4% in those aged 2-17 years; a decrease from 16.7% last week.
- The identified COVID-19 positive cases reflected a rate of 196.2 cases per 100,000 2-4 year olds, 546.5 cases per 100,000 5-11 year olds, 396.4 per 100,000 12-15 year olds and 389.5 cases per 100,000 16-17 year olds. The rate of cases per 100,000 of the general population was 320.0.

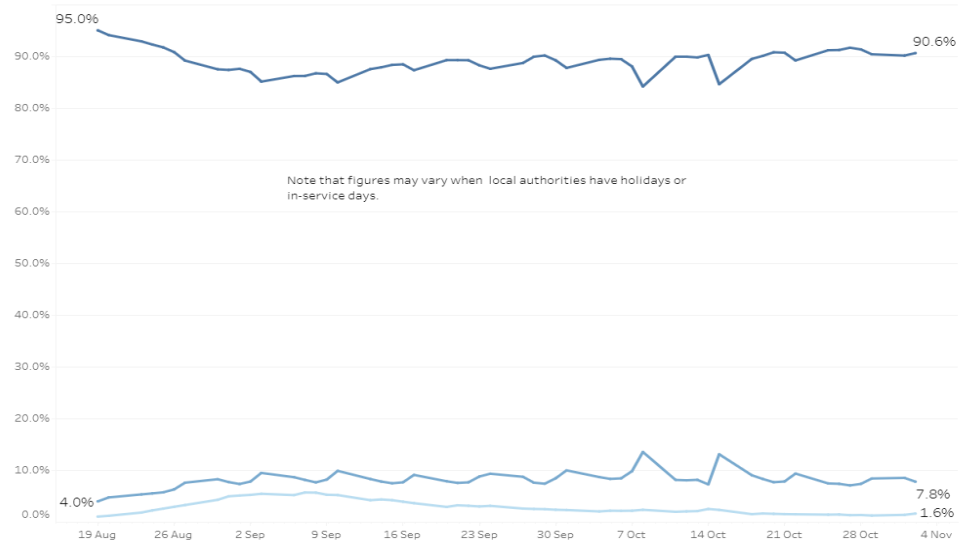
On 2nd November:

- Attendance in local authority schools was 90.6%, whilst the percentages of openings recorded as pupils not in school (non Covid-19 reasons) was 7.8%, and for not in school (Covid-19 related reasons) was 1.6%.
- 11,602 pupils were not in school either all or part of the day because of Covid-19 related reasons. Of these, 2,585 were not in school because of a Covid-19 related sickness.



School Attendance and Absence over time

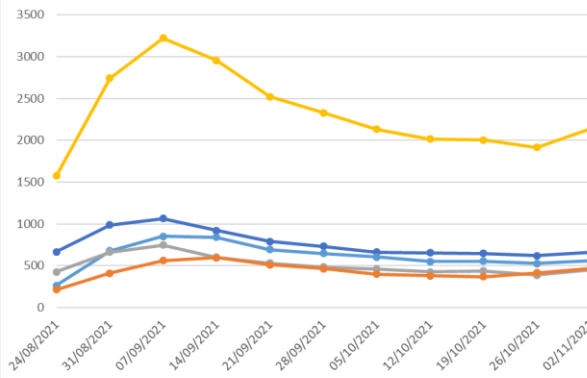
- Percentage Attendance
- Percentage of openings showing pupils were not in school because of any Covid-19 related reason
- Percentage of openings showing pupils were not in school because of non-Covid-19 reasons



Covid-19 Education Recovery Group - Infographic

- 2,134 staff were absent due to Covid-19 related reasons, of which, 1,215 were teaching staff and 919 were other school-based staff.
- 54,664 children were attending a childcare setting and 867 had a Covid-19 related absence. Note that not all open settings completed the survey and that these figures are an underestimate of the actual number of open settings and children attending.
- This week, 577 (2.7%) childcare staff were absent due to Covid-19 related reasons [based on a 52% response rate].

Estimated number of local authority school-based staff absent due to Covid-19 related reasons, Scotland



For any LAs that were unable to submit their latest information on time, or for other reasons (e.g. due to local holidays/in-service days), then their previously submitted figures have been carried forward in order to produce an estimated total number of staff absent for Scotland.

As such, week on week comparisons should be made with some caution as there will be some variation in the number of weeks between a local authority's latest provided figures and their previously submitted figures.

This week we received responses from all 32 local authorities

Number of children attending and absent on 2 November 2021 by type of childcare provider

