

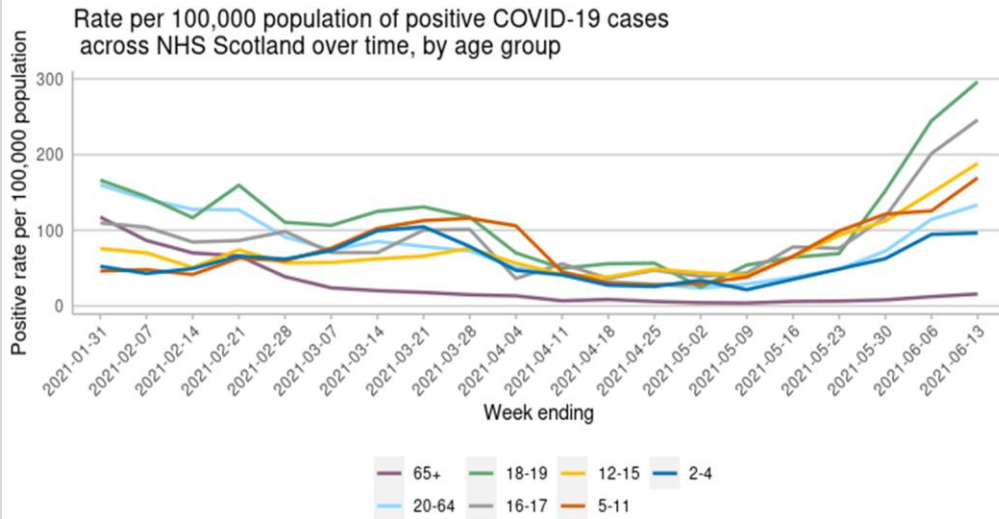
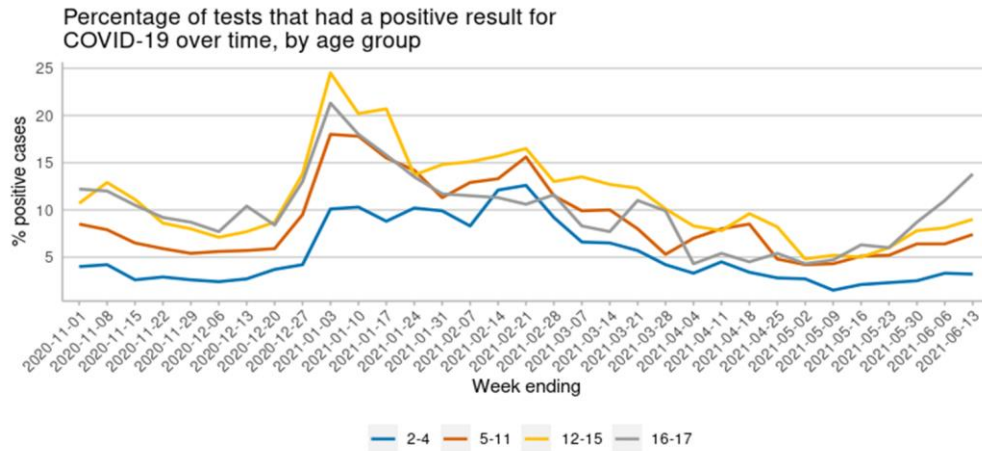
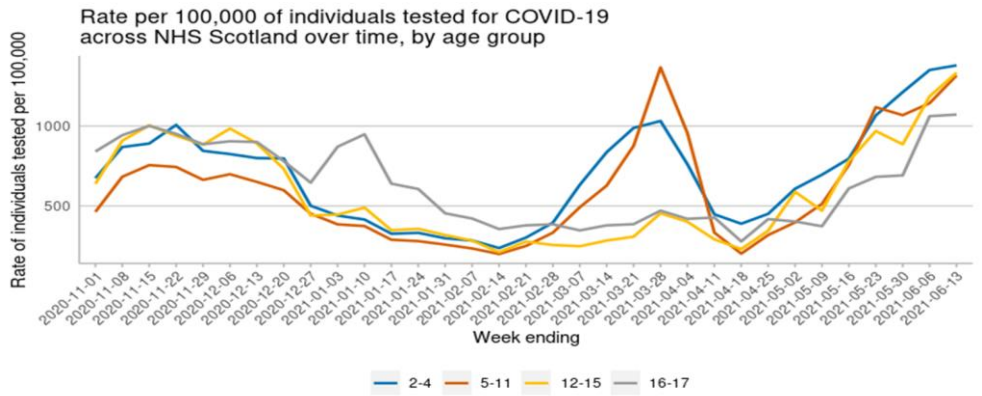
Covid-19 Education Recovery Group - Infographic

In the week ending 13th June 2021:

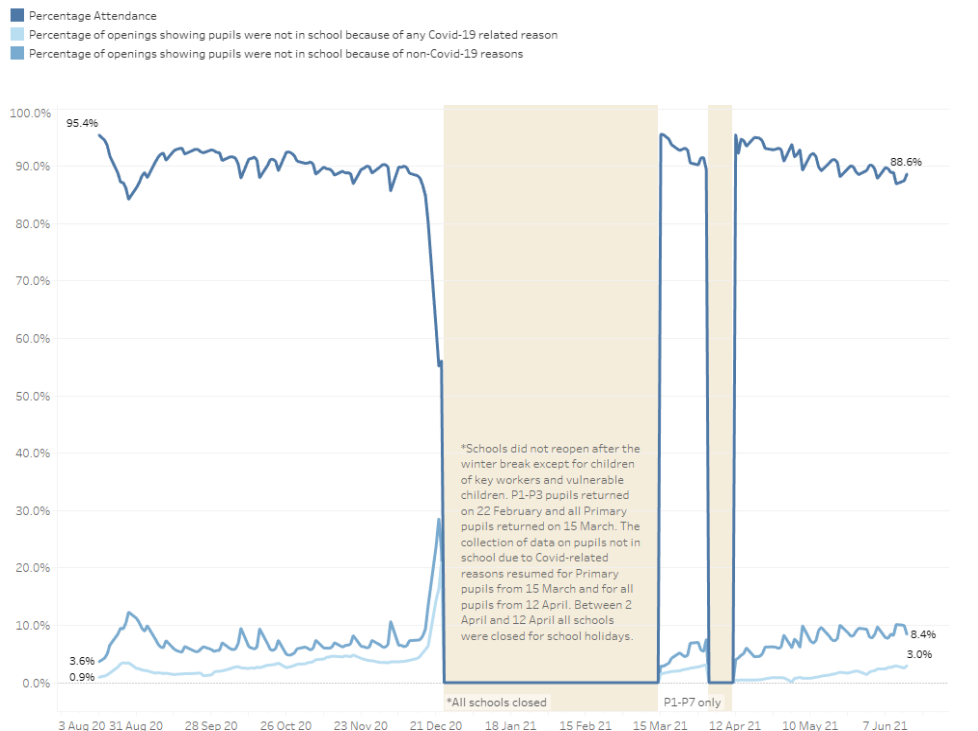
- The rate of testing was 1,303.8 per 100,000 children and young people aged 2-17 years.
- The percentage of tests that were positive was 7.4% in those aged 2-17 years; an increase from 6.5% last week.
- The identified COVID-19 positive cases reflected a rate of 96.3 cases per 100,000 2-4 year olds, 169.2 cases per 100,000 5-11 year olds, 188.3 per 100,000 12-15 year olds and 245.9 cases per 100,000 16-17 year olds. The rate of cases per 100,000 of the general population was 118.6.

On 15th June:

- Attendance in local authority schools was 88.6%, whilst the percentages of openings recorded as pupils not in school (non Covid-19 reasons) was 8.4%, and for not in school (Covid-19 related reasons) was 3.0%.
- 20,723 pupils were not in school either all or part of the day because of Covid-19 related reasons.



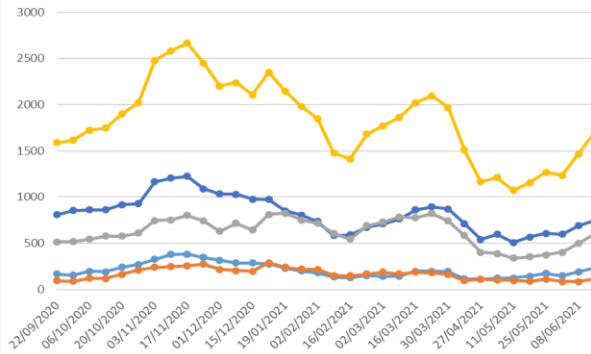
School Attendance and Absence over time



Covid-19 Education Recovery Group - Infographic

- 1,700 staff were absent due to Covid-19 related reasons, of which, 980 were teaching staff and 720 were other school-based staff.
- 74,802 children were attending a childcare setting and 2,453 had a Covid-19 related absence. Note that not all open settings completed the survey and that these figures are an underestimate of the actual number of open settings and children attending.
- This week, 637 (3%) childcare staff were absent due to Covid-19 related reasons [based on a 51% response rate].

Estimated number of local authority school-based staff absent due to Covid-related reasons, Scotland



For any LAs that were unable to submit their latest information on time, or for other reasons (e.g. due to local holidays/in-service days), then their previously submitted figures have been carried forward in order to produce an estimated total number of staff absent for Scotland.

As such, week on week comparisons should be made with some caution as there will be some variation in the number of weeks between a local authority's latest provided figures and their previously submitted figures.

The latest estimated total number of staff absent (i.e. as at 15/06/21) has two local authorities for which previously supplied figures have been carried forward.

- Teaching staff who do not have confirmed Covid-19 or who have not displayed any Covid-19 symptoms but are absent because they are self-isolating / shielding / quarantining / looking after someone due to Covid-19 (e.g. their child)
- Teaching staff absent with confirmed Covid-19 or with symptoms of Covid-19
- Other school-based staff who do not have confirmed Covid-19 or who have not displayed any Covid-19 symptoms but are absent because they are self-isolating / shielding / quarantining / looking after someone due to Covid-19 (e.g. their child)
- Other school-based staff who are absent with confirmed Covid-19 or with symptoms of Covid-19
- All staff absent because they are either self isolating, etc. or have confirmed /symptoms of Covid-19

Number of children attending and absent on 15 June by type of childcare provider

