

# Scotland's Labour Market - Monthly Briefing – April 2021

Scottish Government: Office of the Chief Economic Adviser



Scottish Government  
Riaghaltas na h-Alba  
gov.scot

This document contains up-to-date statistical information concerning the labour market in Scotland from a range of official sources.

This document is part of a collection:

<https://www.gov.scot/collections/labour-market-statistics/>

HEADLINE ESTIMATES  
gender  
ages

YOUTH 16-24 YEARS  
gender  
UK regions  
International  
gender

LABOUR MARKET  
disability  
minority ethnic  
underemployment  
qualifications  
full-time education

UNEMPLOYMENT  
duration  
model based

ALTERNATIVE CLAIMANT COUNT  
all ages  
16-24 years  
local authorities

CLAIMANT COUNT  
all ages  
16-24 years  
local authorities

HMRC EARNINGS  
HMRC PAYROLLED  
EMPLOYEES

Sections 1-4: Rates published from the Labour Force Survey and Annual Population Survey remain robust and reliable, however levels and changes in levels should be used with caution. See page 43 for further information.

**new  
data**

<p><b>1. HEADLINE MEASURES</b></p> <p><i>Headline data</i></p> <p><i>gender</i></p> <p><i>age</i></p>	<ul style="list-style-type: none"> <li>y Table 1.1: Employment and unemployment, Dec-Feb 2021</li> <li>y Charts 1.1 and 1.2: Employment and unemployment rate trends for Scotland and UK, Dec-Feb 2021</li> <li>y Charts 1.3 and 1.4: Employment and unemployment rate trends for Scotland and UK, Dec-Feb 2021 - change on quarter and year</li> <li>y Charts 1.5 and 1.6: Unemployment rate (16+) by UK country, Dec-Feb 2021 - change on quarter and year</li> <li>y Table 1.2: Economic activity and inactivity, Dec-Feb 2021</li> <li>y Tables 1.3 and 1.4: Unemployment and Employment by Government Office Region, Dec-Feb 2021</li> <li>y Charts 1.7 and 1.8: Employment rate (16-64) for Government Office Regions, Dec-Feb 2021 - change on quarter and year</li> <li>y Charts 1.9 and 1.10: Unemployment rate (16+) for Government Office Regions, Dec-Feb 2021 - change on quarter and year</li> <li>y Table 1.5: Employment, ILO unemployment and inactivity rates by gender, Dec-Feb 2021</li> <li>y Chart 1.11: Employment rate by gender (16-64), Scotland and UK, 1997-2021</li> <li>y Chart 1.12: Unemployment rate by gender (16+), Scotland and UK, 1997-2021</li> <li>y Chart 1.13: Inactivity rate by gender (16-64), Scotland, UK 1997-2021</li> <li>y Table 1.6 : Employment, ILO Unemployment and Inactivity by age group, Scotland and UK (APS and LFS)</li> </ul>
<p><b>2: YOUTH 16-24 YEARS</b></p> <p><i>Headline data</i></p> <p><i>gender</i></p> <p><i>UK</i></p>	<ul style="list-style-type: none"> <li>y Table 2.1: Youth Employment, Unemployment and Inactivity (LFS and APS), Scotland and UK</li> <li>Charts 2.1 and 2.2: Youth employment and unemployment, Scotland and UK (APS)</li> <li>Table 2.2: Employment, ILO unemployment and inactivity for 16-24 age group by gender, Scotland and UK (APS), Jan 2020 - Dec 2020</li> <li>Charts 2.3 and 2.4: Youth employment and unemployment by gender, Scotland (APS)</li> <li>y Tables 2.3 and 2.4: Youth Unemployment and Employment by Government Office Region, Dec-Feb 2021</li> </ul>
<p><b>3: LABOUR MARKET</b></p> <p><i>disability</i></p> <p><i>ethnicity</i></p> <p><i>self-employed, full-time part-time</i></p> <p><i>underemployment</i></p> <p><i>qualifications</i></p>	<ul style="list-style-type: none"> <li>Table 3.1: Employment rates and levels of the population aged 16-64 by disability status, Scotland (LFS and APS), 2013-2020</li> <li>Table 3.2: Employment rates and levels of the population aged 16-64 by ethnicity and gender, Scotland, 2011 - 2020</li> <li>Table 3.3: Employment patterns, Scotland, Dec-Feb 2021</li> <li>y Table 3.4: Underemployment, Scotland and UK, 2010-2020</li> <li>Table 3.5: Employment rates by highest qualification held and gender, Scotland and UK, Jan 2020 - Dec 2020</li> </ul>

# Scotland's Labour Market - Monthly Briefing – April 2021

Scottish Government: Office of the Chief Economic Adviser



Scottish Government  
Riaghaltas na h-Alba  
gov.scot

This document contains up-to-date statistical information concerning the labour market in Scotland from a range of official sources.

This document is part of a collection:

<https://www.gov.scot/collections/labour-market-statistics/>

HEADLINE ESTIMATES  
gender  
ages

YOUTH 16-24 YEARS  
gender  
UK regions  
International  
gender

LABOUR MARKET  
disability  
minority ethnic  
underemployment  
qualifications  
full-time education

UNEMPLOYMENT  
duration  
model based

ALTERNATIVE CLAIMANT COUNT  
all ages  
16-24 years  
local authorities

CLAIMANT COUNT  
all ages  
16-24 years  
local authorities

HMRC EARNINGS  
HMRC PAYROLLED  
EMPLOYEES

Sections 1-4: Rates published from the Labour Force Survey and Annual Population Survey remain robust and reliable, however levels and changes in levels should be used with caution. See page 43 for further information.

*new  
data*

<p style="text-align: center;"><b>4: UNEMPLOYMENT</b></p> <p><i>by duration model-based by age</i></p>	<p>Table 4.1: Unemployment by duration, Annual Population Survey, Jan 2020 - Dec 2020</p> <p>y Table 4.2: Model Based Unemployment levels and rates by Local Authority</p> <p>Chart 4.1: ILO unemployment levels by age-group (16-64), Scotland</p>
<p style="text-align: center;"><b>5: CLAIMANT COUNT</b></p> <p><i>16+ years</i></p> <p><i>16-24 years</i></p>	<p><b>EXPERIMENTAL STATISTICS</b></p> <p>y Chart 5.1: Unemployment, Alternative Claimant Count and Claimant Count levels, Scotland, January 2013 - March 2021</p> <p>y Table 5.1: Claimant Count data for March 2021 - (Experimental Data)</p> <p>y Table 5.2: Claimant Count by local authority (Experimental data)</p> <p>y Chart 5.2: Change in Claimant Count rate by local authority, March 2020 to March 2021 (Experimental data)</p> <p>y Tables 5.3 and 5.4: 16-24 Claimant Count levels and rates, Scotland and UK (Experimental data)</p> <p>y Table 5.5: 16-24 Claimant Count levels and rates by Local Authority, March 2021 (Experimental data)</p>
<p style="text-align: center;"><b>6: ALTERNATIVE CLAIMANT COUNT</b></p> <p><i>16+ years</i></p> <p><i>16-24 years</i></p>	<p><b>EXPERIMENTAL STATISTICS</b></p> <p>y Table 6.1: Alternative Claimant Count data for February 2021 - (Experimental Data)</p> <p>y Table 6.2: Alternative Claimant Count by local authority (Experimental data)</p> <p>y Tables 6.3 and 6.4: 16-24 Alternative Claimant Count levels and rates, Scotland and UK (Experimental data)</p> <p>y Table 6.5: 16-24 Alternative Claimant Count levels and rates by Local Authority (Experimental data)</p>
<p style="text-align: center;"><b>7: HMRC REAL TIME PAYE DATA</b></p> <p><i>Scotland and UK</i></p> <p><i>by region</i></p>	<p><b>EXPERIMENTAL STATISTICS</b></p> <p>y Table 7.1: HMRC RTI data, Scotland and UK, February 2015 - February 2021 (Experimental data)</p> <p>y Chart 7.1: Median monthly pay, Scotland and UK, February 2015 - March 2021 (Experimental data)</p> <p>y Charts 7.2 and 7.3: Payrolled employees and median monthly pay by region - annual change, February 2020 to February 2021 (Experimental data)</p> <p>y Charts 7.4 and 7.5: Payrolled employees and median monthly pay (NUTS2) - annual change, February 2020 to February 2021 - (Experimental data)</p>
<p style="text-align: center;"><b>BACKGROUND INFORMATION</b></p> <p>Notes - 1 Notes - 2</p>	<p>Further information on revisions in response to COVID-19 measures, Alternative Claimant Count, Claimant Count and Measures of Disability</p> <p>Further sources and contact details</p>

**Table 1.1: Employment and unemployment, Dec-Feb 2021**  
*seasonally adjusted*

	Level ('000)							Rate						
	Level	change on Sep-Nov 2020		change on year		change on Dec-Feb 2011		Rate (%)	change on Sep-Nov 2020 (%pt)		change on year (%pt)		change on Dec-Feb 2011 (%pt)	
<b>Employment* (levels 16+, rates 16-64)</b>														
Scotland	2,666	5	↑	-23	↓	174	↑	74.6	0.2	↑	-0.7	↓	3.6	↑
England	27,456	-66	↓	-582	↓	2,648	↑	75.5	-0.1	↓	-1.5	↓	4.6	↑
Wales	1,475	12	↑	5	↑	119	↑	73.2	0.8	↑	-0.8	↓	5.4	↑
Northern Ireland	834	-24	↓	-43	↓	47	↑	69.0	-1.6	↓	-3.5	↓	2.4	↑
UK	32,430	-73	↓	-643	↓	2,989	↑	75.1	-0.1	↓	-1.4	↓	4.5	↑
<b>Unemployment** (16+)</b>														
Scotland	123	-1	↓	18	↑	-97	↓	4.4	0.0	↔	0.6	↑	-3.7	↓
England	1,446	-56	↓	265	↑	-636	↓	5.0	-0.2	↓	1.0	↑	-2.7	↓
Wales	74	3	↑	18	↑	-55	↓	4.8	0.1	↑	1.1	↑	-3.9	↓
Northern Ireland	32	4	↑	10	↑	-30	↓	3.7	0.5	↑	1.2	↑	-3.6	↓
UK	1,675	-50	↓	311	↑	-817	↓	4.9	-0.1	↓	0.9	↑	-2.9	↓

Source: Labour Force Survey, ONS

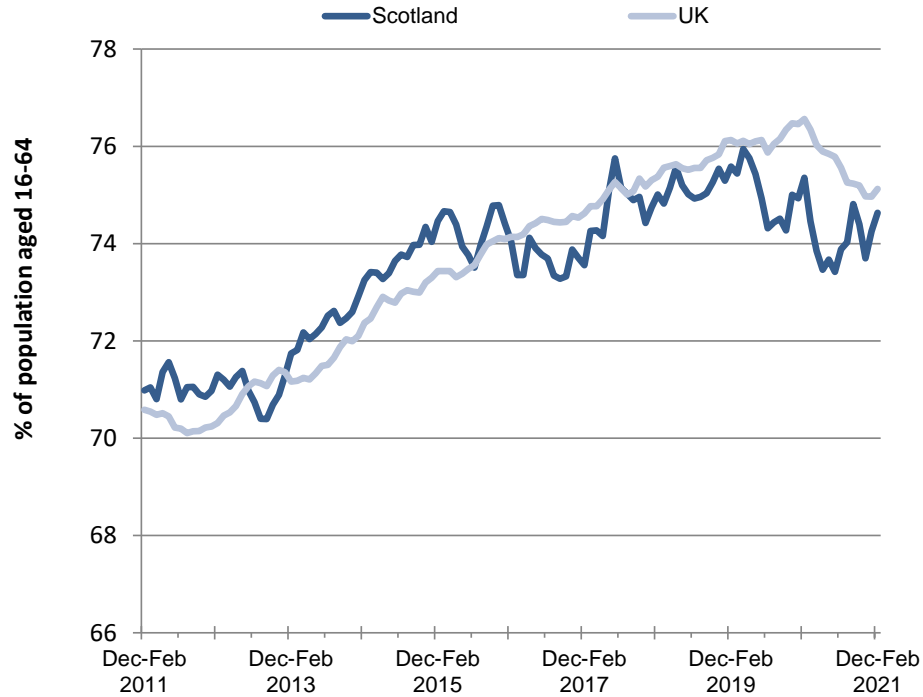
Note: \*Denominator = all persons aged 16-64 \*\*Denominator = total economically active (16+)

**IMPORTANT NOTE** Labour Force Survey (LFS) and Annual Population Survey (APS) responses are weighted to official population projections. As the current projections are 2018-based they are based on demographic trends that pre-date the COVID-19 pandemic. ONS are analysing the population totals used in the weighting process and intend to make adjustments where appropriate. Rates published from the LFS/APS remain robust; however, levels and changes in levels should be used with caution. This will particularly affect estimates for country of birth, nationality, ethnicity and disability.

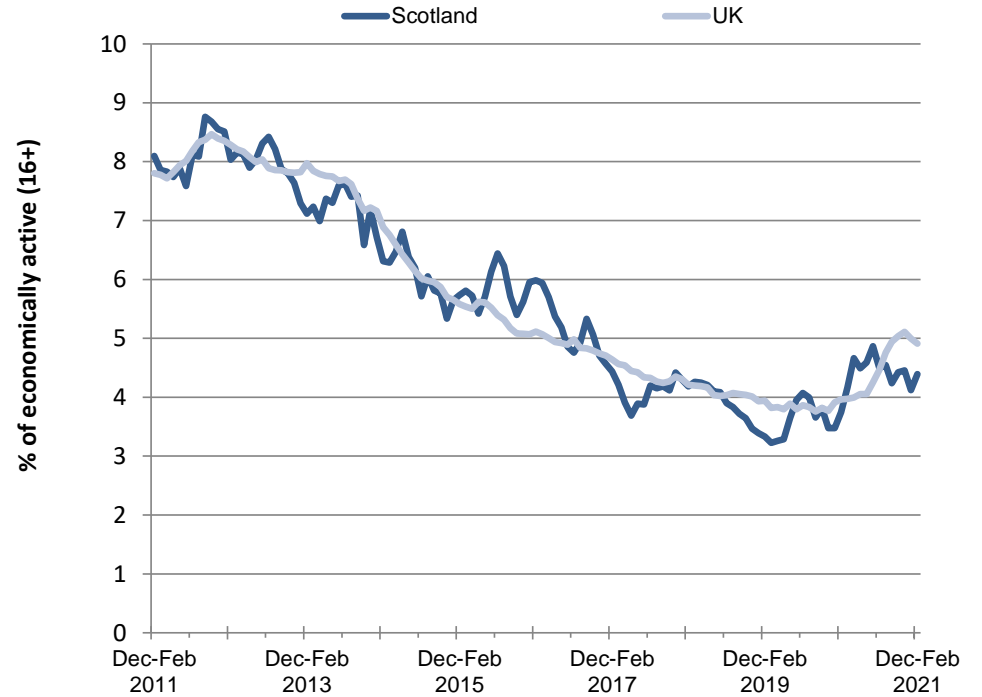
**Charts 1.1 and 1.2: Employment and unemployment rate trends for Scotland and UK, Dec-Feb 2021**

*seasonally adjusted*

**Chart 1.1: Employment rate (16-64), Scotland and UK**  
*seasonally adjusted*



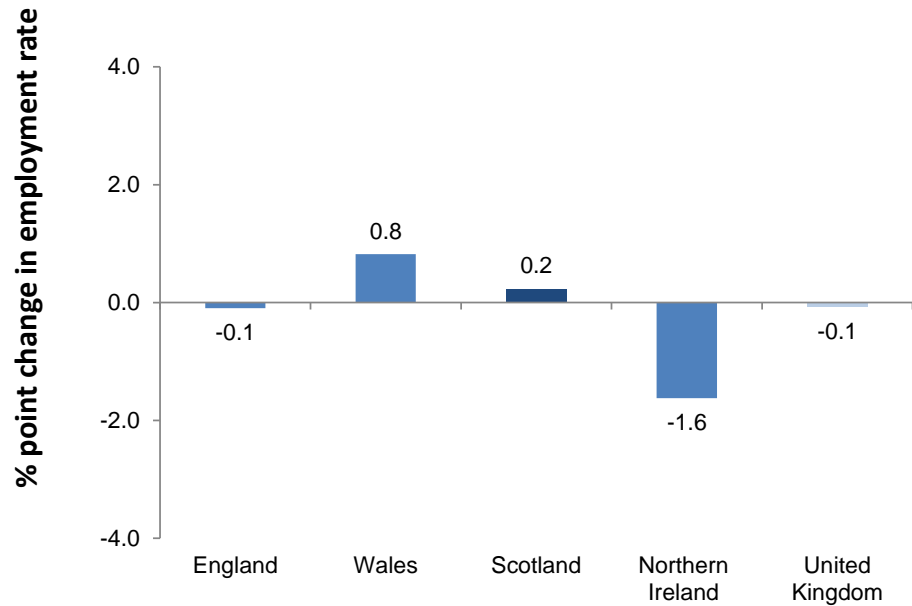
**Chart 1.2: Unemployment rate (16+), Scotland and UK**  
*seasonally adjusted*



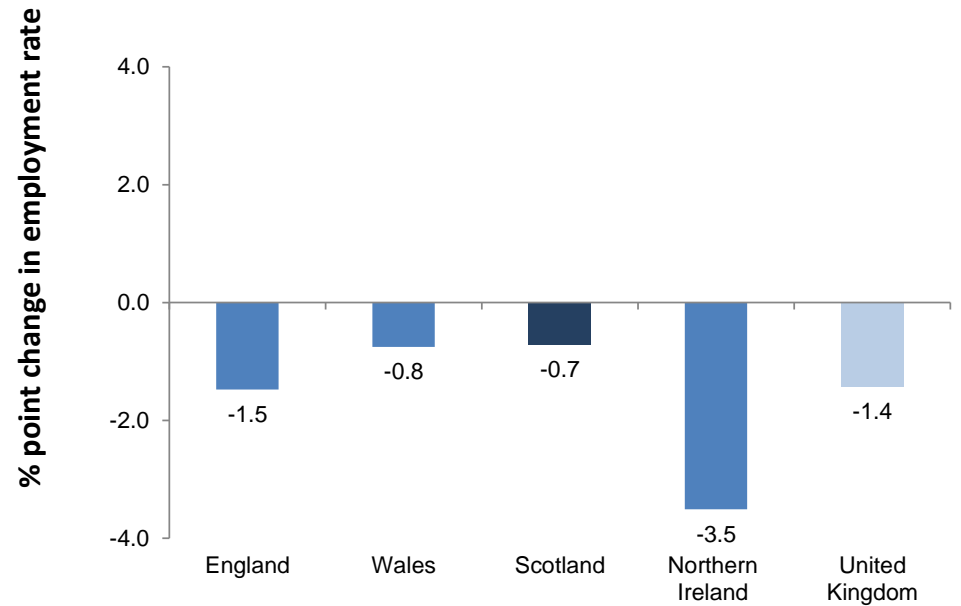
Source: Labour Force Survey, ONS

**Charts 1.3 and 1.4: Employment and unemployment rate trends for Scotland and UK, Dec-Feb 2021 - change on quarter and year**  
*seasonally adjusted*

**Chart 1.3: Employment rate (16-64) by UK country - change on quarter**  
*seasonally adjusted*



**Chart 1.4: Employment rate (16-64) by UK country - change on year**  
*seasonally adjusted*

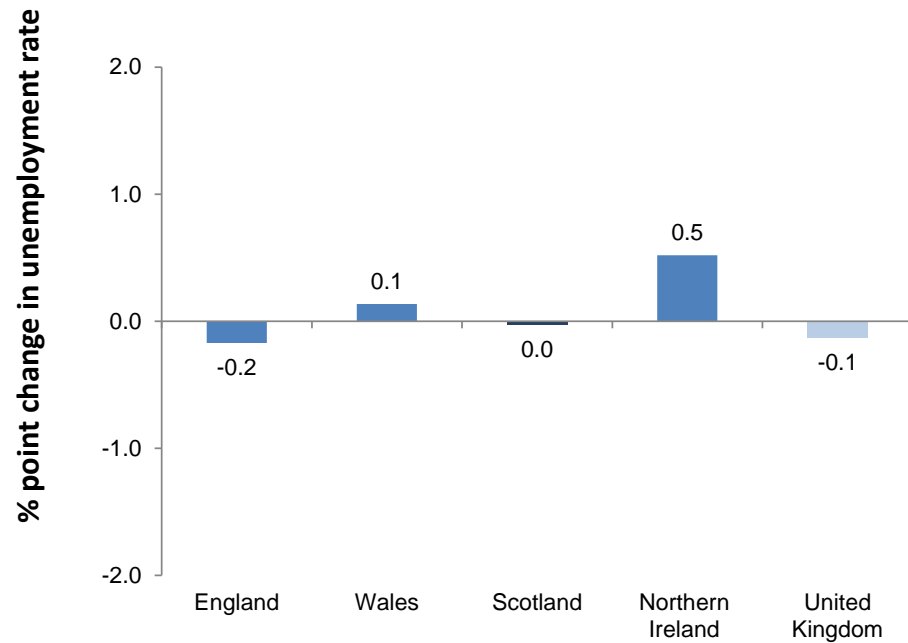


Source: Labour Force Survey, ONS

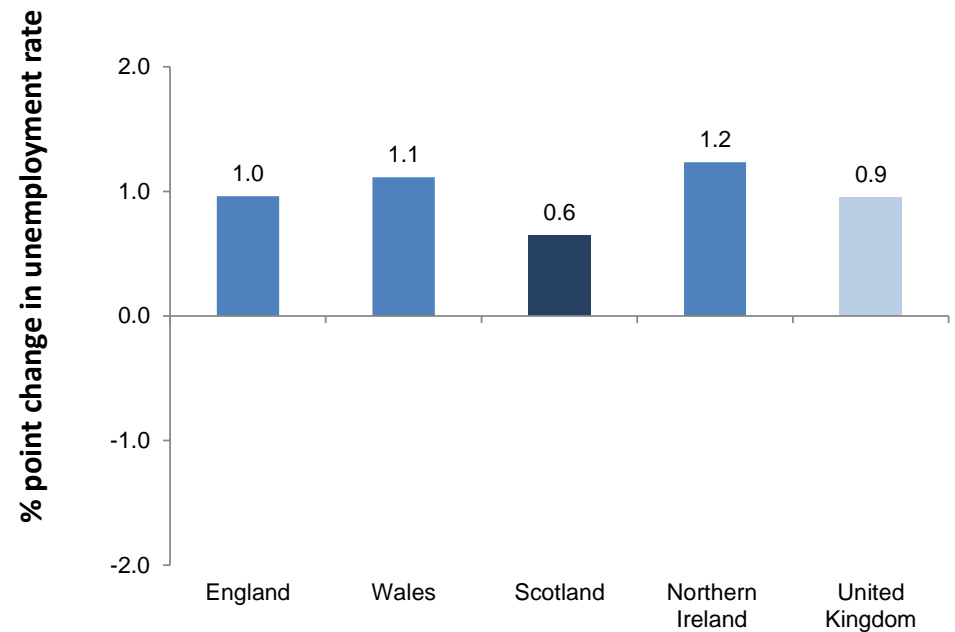
Note: Chart bars based on unrounded data. Chart labels rounded to one decimal place.

**Charts 1.5 and 1.6: Unemployment rate (16+) by UK country, Dec-Feb 2021 - change on quarter and year**  
*seasonally adjusted*

**Chart 1.5: Unemployment rate (16+) by UK country - change on quarter**  
*seasonally adjusted*



**Chart 1.6: Unemployment rate (16+) by UK country - change on year**  
*seasonally adjusted*



Source: Labour Force Survey, ONS

Note: Chart bars based on unrounded data. Chart labels rounded to one decimal place.

**Table 1.2: Economic activity and inactivity, Dec-Feb 2021**  
*seasonally adjusted*

	Level ('000)						Rate							
	Level	change on Sep-Nov 2020		change on year		change on Dec-Feb 2011	Rate (%)	change on Sep-Nov 2020 (%pt)		change on year (%pt)		change on Dec-Feb 2011 (%pt)		
<b>Economic Activity* (levels 16+, rates 16-64)</b>														
Scotland	2,788	4	↑	-5	↓	77	↑	78.1	0.2	↑	-0.2	↓	0.8	↑
England	28,902	-122	↓	-317	↓	2,013	↑	79.5	-0.3	↓	-0.7	↓	2.6	↑
Wales	1,548	15	↑	23	↑	64	↑	77.0	1.0	↑	0.1	↑	2.6	↑
Northern Ireland	866	-20	↓	-33	↓	18	↑	71.7	-1.3	↓	-2.7	↓	-0.2	↓
UK	34,105	-122	↓	-332	↓	2,172	↑	79.1	-0.2	↓	-0.7	↓	2.4	↑
<b>Economic Inactivity* (16-64)</b>														
Scotland	752	-8	↓	7	↑	-23	↓	21.9	-0.2	↓	0.2	↑	-0.8	↓
England	7,150	91	↑	266	↑	-680	↓	20.5	0.3	↑	0.7	↑	-2.6	↓
Wales	439	-19	↓	-3	↓	-54	↓	23.0	-1.0	↓	-0.1	↓	-2.6	↓
Northern Ireland	331	16	↑	32	↑	6	↑	28.3	1.3	↑	2.7	↑	0.2	↑
UK	8,673	80	↑	303	↑	-752	↓	20.9	0.2	↑	0.7	↑	-2.4	↓

Source: Labour Force Survey, ONS

Note: \*Denominator = all aged 16-64

**IMPORTANT NOTE** Labour Force Survey (LFS) and Annual Population Survey (APS) responses are weighted to official population projections. As the current projections are 2018-based they are based on demographic trends that pre-date the COVID-19 pandemic. ONS are analysing the population totals used in the weighting process and intend to make adjustments where appropriate. Rates published from the LFS/APS remain robust; however, levels and changes in levels should be used with caution. This will particularly affect estimates for country of birth, nationality, ethnicity and disability.

**Table 1.3: Unemployment by Government Office Region (LFS), Dec-Feb 2021**  
seasonally adjusted

	Level (000s)	change on Sep-Nov 2020 (000s)		change on year (000s)		Rate (%)	%pt change on Sep-Nov 2020		%pt change on year	
North East	73	-9	↓	0	↔	5.7	-0.7	↓	0.1	↑
North West	191	22	↑	32	↑	5.3	0.6	↑	1.0	↑
Yorkshire and The Humber	133	-6	↓	5	↑	4.9	-0.2	↓	0.2	↑
East Midlands	126	-11	↓	26	↑	5.1	-0.5	↓	1.1	↑
West Midlands	163	-15	↓	20	↑	5.5	-0.5	↓	0.7	↑
East	120	-29	↓	6	↑	3.8	-0.9	↓	0.2	↑
London	366	11	↑	137	↑	7.2	0.3	↑	2.7	↑
South East	159	-16	↓	14	↑	3.4	-0.3	↓	0.4	↑
South West	116	-1	↓	25	↑	4.1	0.0	↔	1.0	↑
Wales	74	3	↑	18	↑	4.8	0.1	↑	1.1	↑
Northern Ireland	32	4	↑	10	↑	3.7	0.5	↑	1.2	↑
<b>Scotland</b>	<b>123</b>	<b>-1</b>	<b>↓</b>	<b>18</b>	<b>↑</b>	<b>4.4</b>	<b>0.0</b>	<b>↔</b>	<b>0.6</b>	<b>↑</b>
<b>United Kingdom</b>	<b>1,675</b>	<b>-50</b>	<b>↓</b>	<b>311</b>	<b>↑</b>	<b>4.9</b>	<b>-0.1</b>	<b>↓</b>	<b>0.9</b>	<b>↑</b>
England	1,446	-56	↓	265	↑	5.0	-0.2	↓	1.0	↑

Source: Labour Force Survey, ONS

**Table 1.4: Employment by UK Countries and Regions (LFS), Dec-Feb 2021**  
seasonally adjusted

	Level (000s)	change on Sep-Nov 2020 (000s)		change on year (000s)		Rate (%)	%pt change on Sep-Nov 2020 (000s)		%pt change on year	
North East	1,209	11	↑	-12	↓	71.9	0.7	↑	-0.6	↓
North West	3,429	-14	↓	-100	↓	73.8	-0.1	↓	-1.8	↓
Yorkshire and The Humber	2,566	-35	↓	-17	↓	73.4	-1.0	↓	-0.1	↓
East Midlands	2,331	25	↑	-44	↓	75.9	0.4	↑	-1.8	↓
West Midlands	2,786	-2	↓	-29	↓	74.1	0.3	↑	-1.2	↓
East	3,082	18	↑	-43	↓	77.7	0.8	↑	-0.5	↓
London	4,736	-42	↓	-129	↓	74.5	-0.6	↓	-2.3	↓
South East	4,594	-12	↓	-109	↓	78.4	-0.3	↓	-1.6	↓
South West	2,722	-15	↓	-98	↓	77.2	-0.1	↓	-2.2	↓
Wales	1,475	12	↑	5	↑	73.2	0.8	↑	-0.8	↓
Northern Ireland	834	-24	↓	-43	↓	69.0	-1.6	↓	-3.5	↓
<b>Scotland</b>	<b>2,666</b>	<b>5</b>	<b>↑</b>	<b>-23</b>	<b>↓</b>	<b>74.6</b>	<b>0.2</b>	<b>↑</b>	<b>-0.7</b>	<b>↓</b>
<b>United Kingdom</b>	<b>32,430</b>	<b>-73</b>	<b>↓</b>	<b>-643</b>	<b>↓</b>	<b>75.1</b>	<b>-0.1</b>	<b>↓</b>	<b>-1.4</b>	<b>↓</b>
England	27,456	-66	↓	-582	↓	75.5	-0.1	↓	-1.5	↓

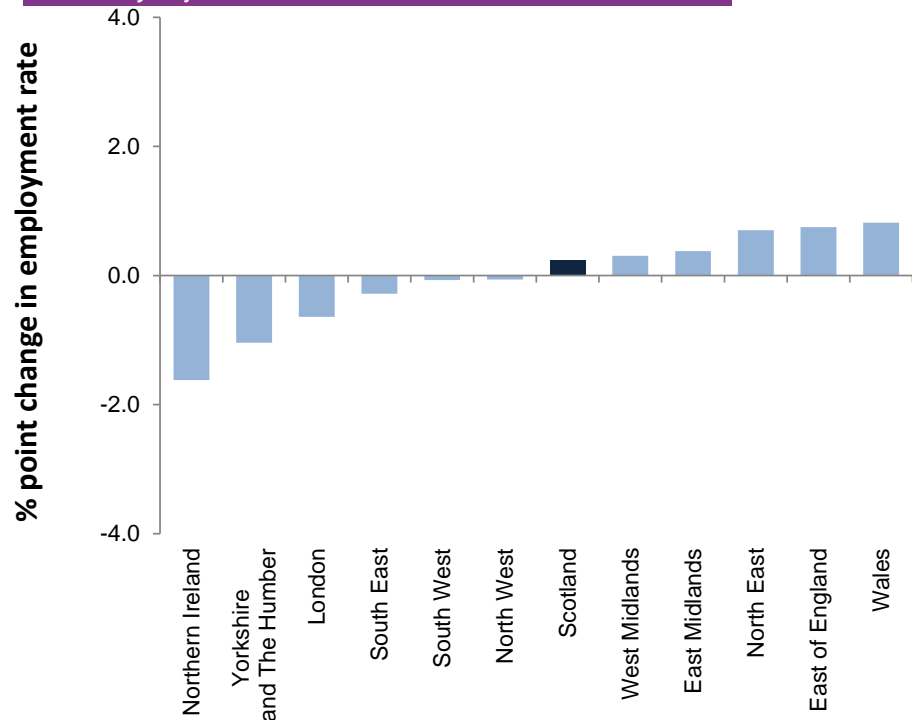
Source: Labour Force Survey, ONS

**IMPORTANT NOTE** Labour Force Survey (LFS) and Annual Population Survey (APS) responses are weighted to official population projections. As the current projections are 2018-based they are based on demographic trends that pre-date the COVID-19 pandemic. ONS are analysing the population totals used in the weighting process and intend to make adjustments where appropriate. Rates published from the LFS/APS remain robust; however, levels and changes in levels should be used with caution. This will particularly affect estimates for country of birth, nationality, ethnicity and disability.

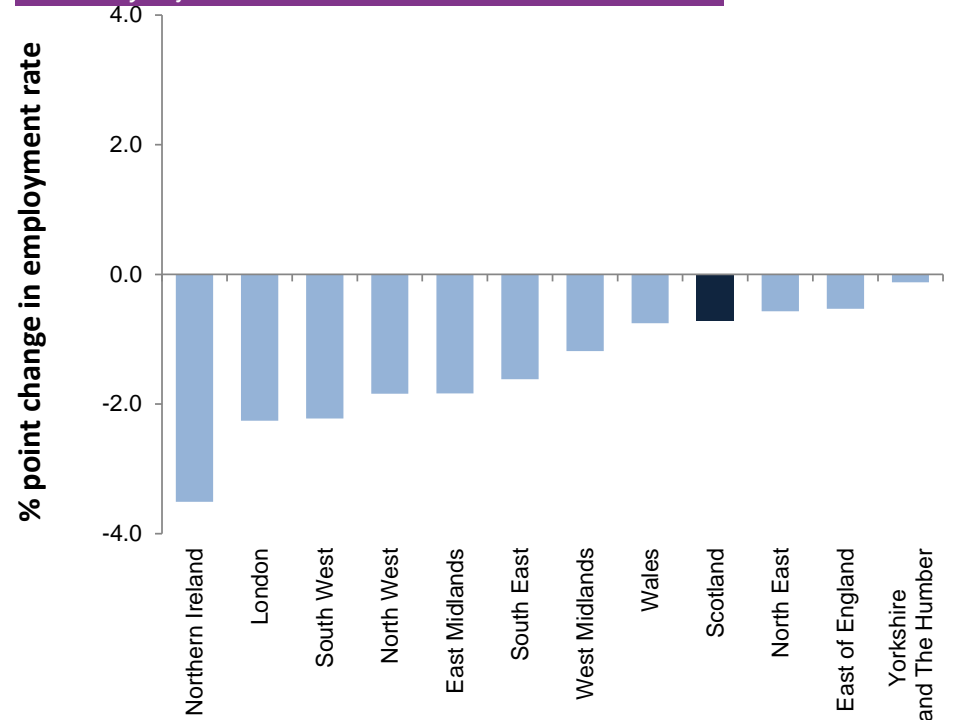


**Charts 1.7 and 1.8: Employment rate (16-64) for Government Office Regions, Dec-Feb 2021 - change on quarter and year**  
*seasonally adjusted*

**Chart 1.7: Employment rate (16-64) by Government Office Region - change on quarter**  
*seasonally adjusted*



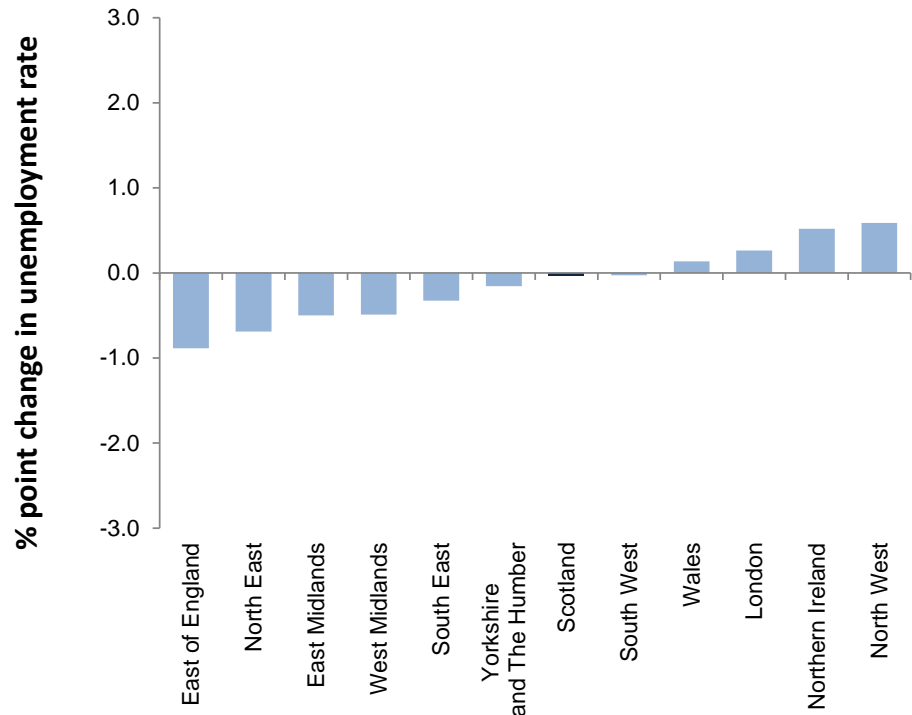
**Chart 1.8: Employment rate (16-64) by Government Office Region - change on year**  
*seasonally adjusted*



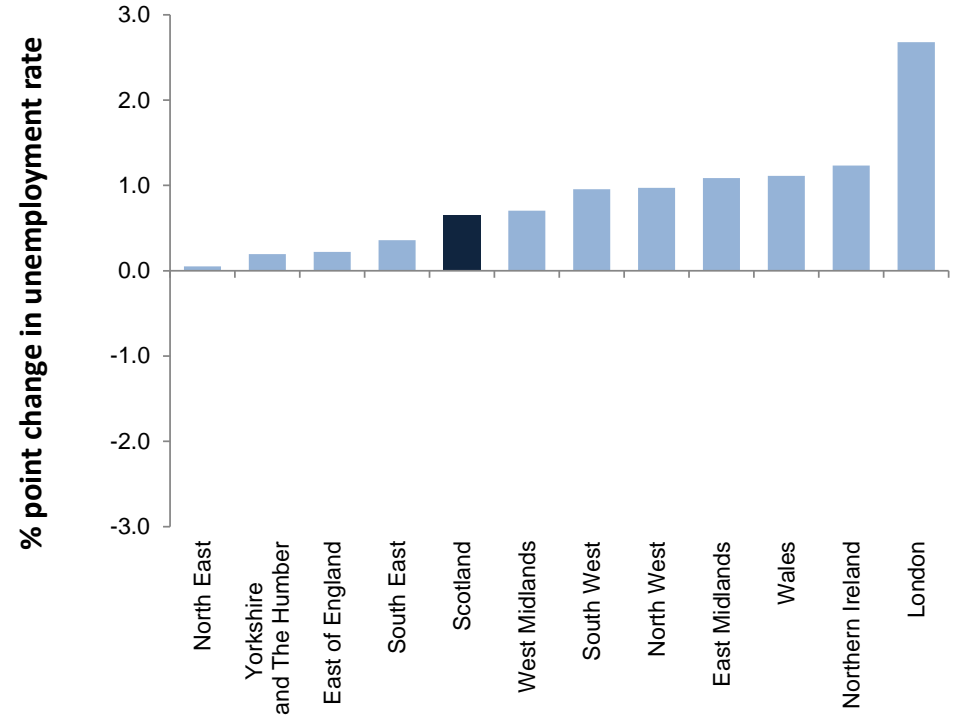
Source: Labour Force Survey, ONS

**Charts 1.9 and 1.10: Unemployment rate (16+) for Government Office Regions, Dec-Feb 2021 - change on quarter and year**  
*seasonally adjusted*

**Chart 1.9: Unemployment rate (16+) by Government Office Region - change on quarter**  
*seasonally adjusted*



**Chart 1.10: Unemployment rate (16+) by Government Office Region - change on year**  
*seasonally adjusted*



Source: Labour Force Survey, ONS

**Table 1.5: Employment, ILO unemployment and inactivity rates by gender, Dec-Feb 2021**  
*seasonally adjusted*

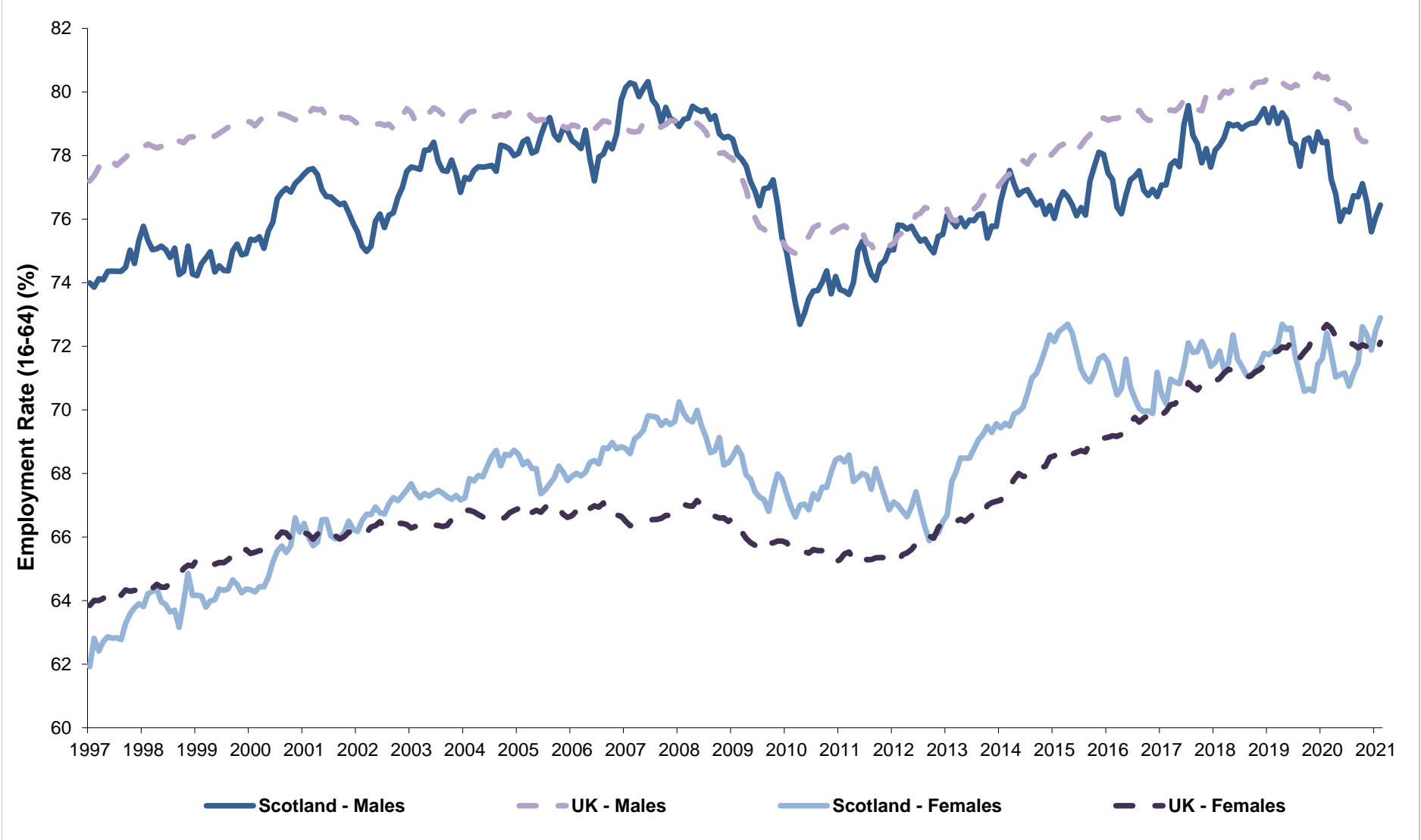
	Gender	Scotland					UK				
		Rate (%)	Change on quarter (%pts)		Change on year (%pts)		Rate (%)	Change on quarter (%pts)		Change on year (%pts)	
Employment Rate*	People	74.6	0.2	↑	-0.7	↓	75.1	-0.1	↓	-1.4	↓
	Men	76.4	-0.1	↓	-2.0	↓	78.2	-0.3	↓	-2.3	↓
	Women	72.9	0.5	↑	0.5	↑	72.1	0.1	↑	-0.6	↓
Unemployment Rate**	People	4.4	0.0	↔	0.6	↑	4.9	-0.1	↓	0.9	↑
	Men	4.4	-1.0	↓	0.5	↑	5.2	-0.2	↓	1.0	↑
	Women	4.4	0.9	↑	0.8	↑	4.6	0.0	↔	1.0	↑
Inactivity Rate*	People	21.9	-0.2	↓	0.2	↑	20.9	0.2	↑	0.7	↑
	Men	19.9	0.9	↑	1.6	↑	17.5	0.5	↑	1.6	↑
	Women	23.7	-1.3	↓	-1.1	↓	24.3	-0.1	↓	-0.2	↓

Source: Labour Force Survey, ONS

Note: \* Denominator = population of aged 16-64

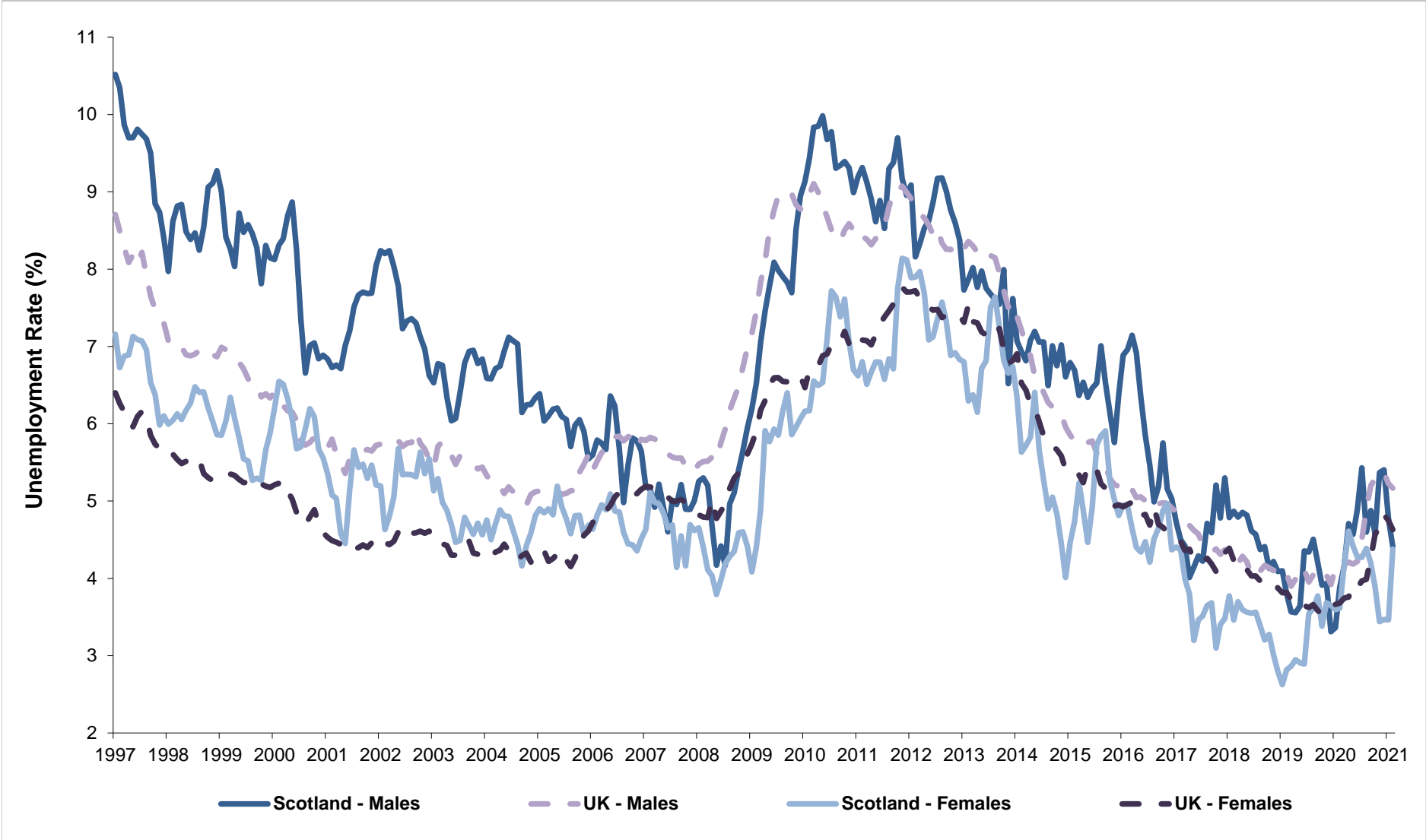
\*\*Denominator = Economically active population

**Chart 1.11: Employment rate by gender (16-64), Scotland and UK, 1997-2021**  
*seasonally adjusted*



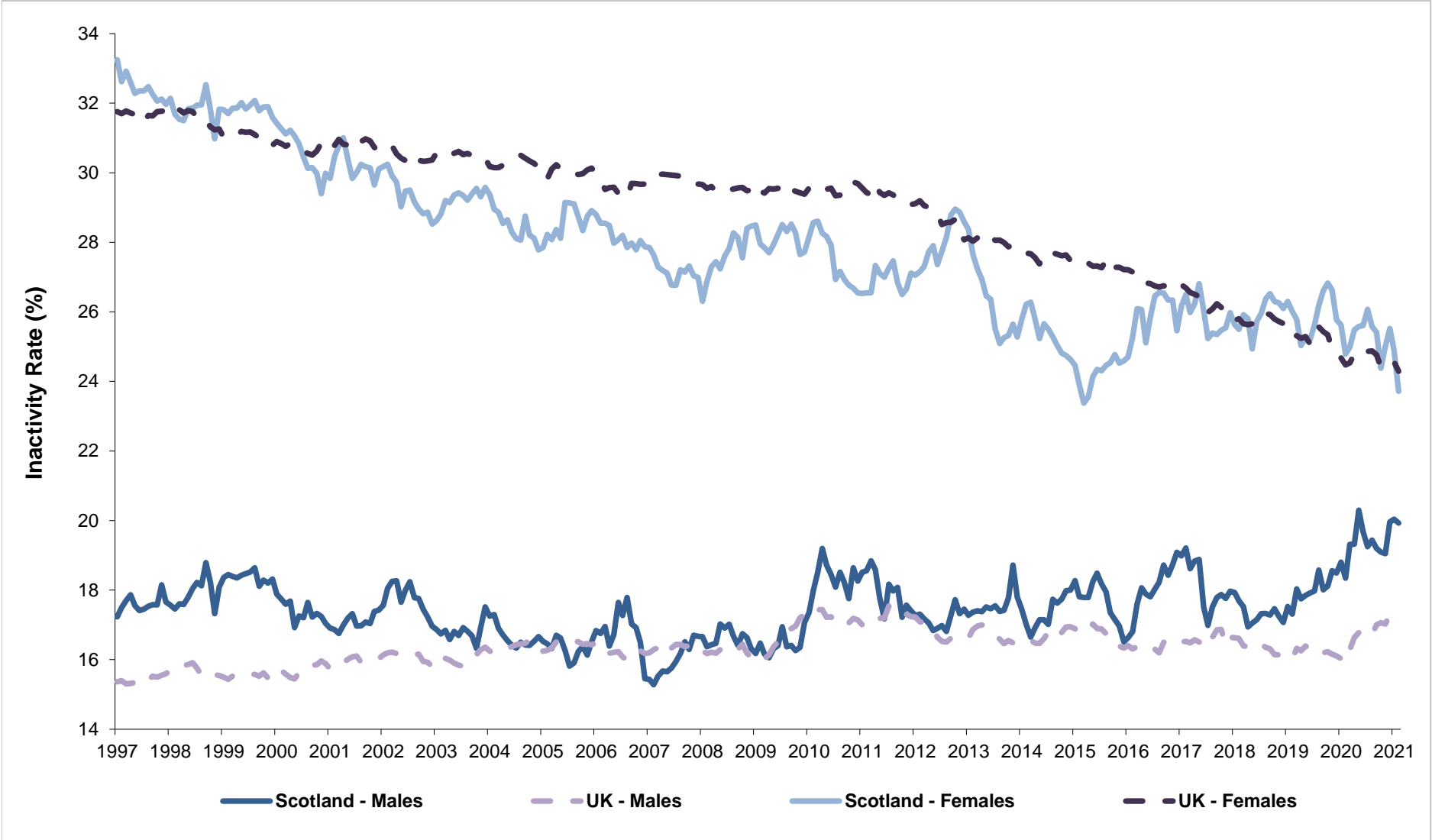
Source: Labour Force Survey, ONS

**Chart 1.12: Unemployment rate by gender (16+), Scotland and UK, 1997-2021**  
*seasonally adjusted*



Source: Labour Force Survey, ONS

**Chart 1.13: Inactivity rate by gender (16-64), Scotland, UK 1997-2021**  
*seasonally adjusted*



Source: Labour Force Survey, ONS

**Table 1.6a: Employment, ILO unemployment and inactivity rates by age group, Scotland and UK, Annual Population Survey: Jan 2020 - Dec 2020**

	Age Group	Scotland					UK				
		Rate (%)	change on year (%pt)	change on Jan 2010 - Dec 2010	Rate (%)	change on year (%pt)	change on Jan 2010 - Dec 2010				
Employment Rate	16-24	51.9	-6.0	↓	-3.6	↓	52.3	-1.8	↓	2.3	↑
	25-34	83.4	1.7	↑	5.3	↑	84.2	0.4	↑	6.5	↑
	35-49	82.6	-1.3	↓	1.0	↑	84.9	0.0	↔	4.1	↑
	50-64	69.4	-1.2	↓	5.3	↑	71.7	-0.6	↓	7.0	↑
	65+	8.8	0.1	↑	2.2	↑	10.5	-0.2	↓	2.4	↑
Unemployment Rate	16-24	13.5	5.2	↑	-4.9	↓	13.3	2.0	↑	-6.2	↓
	25-34	3.2	-0.6	↓	-5.5	↓	4.1	0.5	↑	-3.6	↓
	35-49	3.1	0.5	↑	-2.1	↓	3.0	0.5	↑	-2.3	↓
	50-64	2.9	0.6	↑	-1.3	↓	3.2	0.5	↑	-1.4	↓
	65+	*	*	-	*	-	1.9	0.3	↑	-0.5	↓
Inactivity Rate	16-24	40.0	3.2	↑	8.1	↑	39.6	0.6	↑	1.8	↑
	25-34	13.8	-1.2	↓	-0.6	↓	12.2	-0.9	↓	-3.7	↓
	35-49	14.8	0.9	↑	0.8	↑	12.4	-0.4	↓	-2.1	↓
	50-64	28.6	0.7	↑	-4.6	↓	25.9	0.2	↑	-6.3	↓
	65+	91.1	-0.1	↓	-2.2	↓	89.3	0.2	↑	-2.4	↓

Source: Annual Population Survey, ONS

\* data not available

\*\* Denominator = population in age group

\*\*\* Denominator = Economically active population in age group (where economically active is defined as those in employment plus those who are unemployed)

**Table 1.6b: Employment, ILO unemployment and inactivity rates by age group, Scotland and UK, Labour Force Survey: Dec-Feb 2021**  
Official Statistics - not seasonally adjusted

	Age Group	Scotland					UK				
		Rate (%)	Change on year (%pt)	Change on 2011 (%pt)	Rate (%)	Change on year (%pt)	Change on 2011 (%pt)				
Employment Rate**	16-24	54.6	-0.6	↓	0.2	↑	50.6	-4.9	↓	0.6	↑
	25-34	85.0	2.6	↑	7.2	↑	85.4	0.2	↑	6.6	↑
	35-49	84.5	-1.2	↓	2.2	↑	85.4	-0.4	↓	4.3	↑
	50-64	68.3	-1.9	↓	4.6	↑	71.1	-1.5	↓	6.0	↑
	65+	9.6	0.4	↑	3.0	↑	10.3	-1.0	↓	1.4	↑
Unemployment Rate***	16-24	10.0	-0.4	↓	-9.7	↓	13.4	2.2	↑	-6.4	↓
	25-34	3.1	-0.5	↓	-5.0	↓	3.8	0.5	↑	-3.5	↓
	35-49	3.4	0.7	↑	-1.5	↓	3.4	0.9	↑	-2.1	↓
	50-64	4.2	1.6	↑	-1.2	↓	4.2	1.2	↑	-0.7	↓
	65+	2.6	*	-	*	-	2.5	0.2	↑	0.5	↑
Inactivity Rate**	16-24	39.4	1.0	↑	7.0	↑	41.6	4.1	↑	3.9	↑
	25-34	12.3	-2.3	↓	-3.0	↓	11.2	-0.6	↓	-3.7	↓
	35-49	12.5	0.6	↑	-0.9	↓	11.6	-0.4	↓	-2.6	↓
	50-64	28.7	0.8	↑	-3.9	↓	25.8	0.6	↑	-5.8	↓
	65+	90.1	-0.5	↓	-3.2	↓	89.4	1.0	↑	-1.5	↓

Source: Labour Force Survey, ONS

\* data not available

\*\* Denominator = population in age group

\*\*\* Denominator = Economically active population in age group (where economically active is defined as those in employment plus those who are unemployed).

**Quality indicator**

Shaded estimates are based on a small sample size. This may result in a less precise estimates, which should be used with caution.

Unshaded estimates are based on a larger sample size. This is likely to result in estimates of higher precision, although they will still be subject to some sampling variability.

**Note on data sources:** The Labour Force Survey (LFS) is a survey of households collected and published by the Office for National Statistics (ONS). Further information on reliability can be accessed in the ONS publication at: <https://www.ons.gov.uk/employmentandlabourmarket/peopleinwork/employmentandemployeetypes/methodologies/measuringandreportingreliabilityoflabourforcesurveyandannualpopulationsurveyestimates>

The LFS estimates in Table 1.6b are from the same source as the headline figures but due to the relatively small sample sizes and subsequent sampling variability, the figures should be used with caution and are designated as Official Statistics. The preferred source of labour market indicators by age band for regions/countries of the UK is the Annual Population Survey (APS).

The APS estimates are classified as National Statistics as they are based on a larger sample size, but are not as current as LFS estimates. Regional estimates for the unemployment rate maybe quite volatile, which needs to be allowed for when considering the pattern of change over time and sample sizes are also smaller for sub groups such as 16-24 year olds which can also affect volatility. Sampling variability information is published at:

<https://www.ons.gov.uk/employmentandlabourmarket/peopleinwork/employmentandemployeetypes/datasets/samplingvariabilityandrevisionsummaryforregionallabourmarketstatistics02>

**Table 2.1a: Employment, ILO unemployment and inactivity for 16-24 age group, Scotland and UK, Annual Population Survey (APS): Jan 2020 - Dec 2020**

	Level ('000)					Rate				
	Level	Change on year		change on Jan 2010 - Dec 2010		Rate (%)	Change on year (%pts)		change on Jan 2010 - Dec 2010	
<b>Employment*</b>										
Scotland	289	-38	↓	-54	↓	51.9	-6.0	↓	-3.6	↓
UK	3,592	-143	↓	-65	↓	52.3	-1.8	↓	2.3	↑
<b>ILO Unemployment **</b>										
Scotland	45	15	↑	-32	↓	13.5	5.2	↑	-4.9	↓
UK	552	74	↑	-333	↓	13.3	2.0	↑	-6.2	↓
<b>Inactivity *</b>										
Scotland	223	15	↑	26	↑	40.0	3.2	↑	8.1	↑
UK	2,720	26	↑	-48	↓	39.6	0.6	↑	1.8	↑

Source: Annual Population Survey (APS), ONS

Notes: \*denominator = 16-24 population; \*\* denominator = economically active population aged 16-24

**Table 2.1b: Employment, ILO unemployment and inactivity for 16-24 age group, Scotland and UK, Labour Force Survey (LFS): Dec-Feb 2021**  
*not seasonally adjusted (Official Statistics)*

	Level ('000)					Rate				
	Level	Change on year		Change on 2011		Rate (%)	Change on year (%pts)		Change on 2011 (%pt)	
<b>Employment*</b>										
Scotland	302	-8	↓	-37	↓	54.6	-0.6	↓	0.2	↑
UK	3,460	-359	↓	-214	↓	50.6	-4.9	↓	0.6	↑
<b>ILO Unemployment **</b>										
Scotland	33	-3	↓	-49	↓	10.0	-0.4	↓	-9.7	↓
UK	537	56	↑	-371	↓	13.4	2.2	↑	-6.4	↓
<b>Inactivity *</b>										
Scotland	218	2	↑	16	↑	39.4	1.0	↑	7.0	↑
UK	2,846	265	↑	80	↑	41.6	4.1	↑	3.9	↑

Source: Labour Force Survey (LFS), ONS

\*rate based on total population aged 16-24

\*\*rate=ILO unemployed/(employed+ ILO unemployed)

**Quality indicator**

Shaded estimates are based on a small sample size. This may result in a less precise estimates, which should be used with caution.

Unshaded estimates are based on a larger sample size. This is likely to result in estimates of higher precision, although they will still be subject to some sampling variability.

**Note on data sources:** The Labour Force Survey (LFS) is a survey of households collected and published by the Office for National Statistics (ONS). Further information on reliability can be accessed in the ONS publication at: <https://www.ons.gov.uk/employmentandlabourmarket/peopleinwork/employmentandemployeetypes/methodologies/measuringandreportingreliabilityoflabourforcesurveyandannualpopulationurveyestimates>

The LFS estimates in Table 2.1b are from the same source as the headline figures but due to the relatively small sample sizes and subsequent sampling variability, the figures should be used with caution and are designated as Official Statistics. The preferred source of labour market indicators by age band for regions/countries of the UK is the Annual Population Survey (APS).

The APS estimates are classified as National Statistics as they are based on a larger sample size, but are not as current as LFS estimates. Regional estimates for the unemployment rate maybe quite volatile, which needs to be allowed for when considering the pattern of change over time and sample sizes are also smaller for sub groups such as 16-24 year olds which can also affect volatility. Sampling variability information is published at:

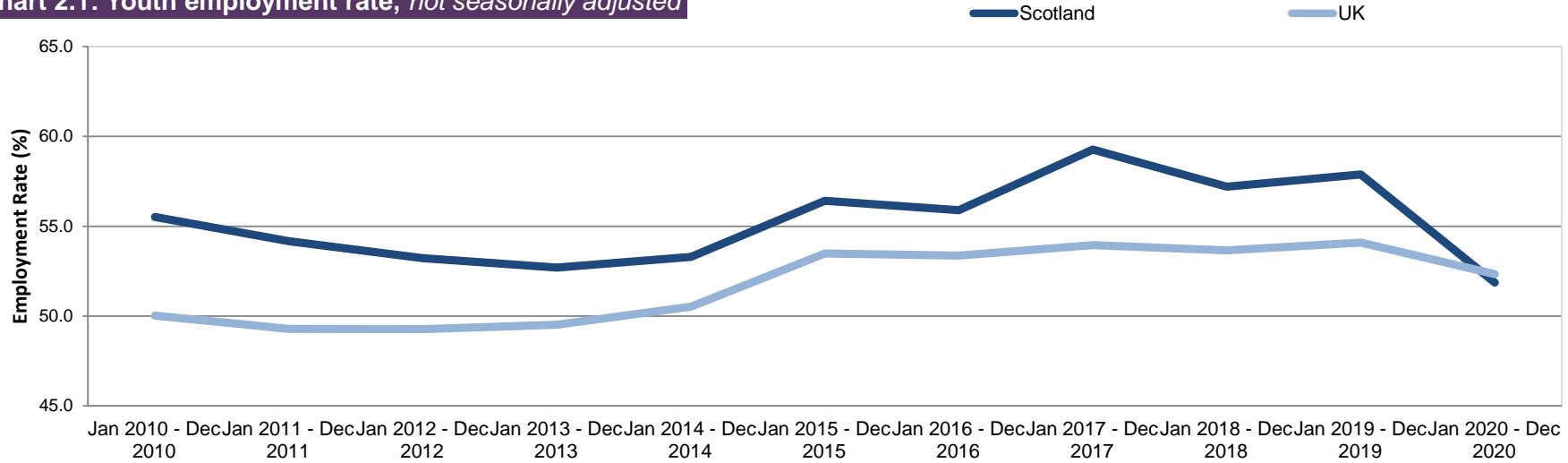
<https://www.ons.gov.uk/employmentandlabourmarket/peopleinwork/employmentandemployeetypes/datasets/samplingvariabilityandrevisionsummaryforregionallabourmarketstatistics02>

**IMPORTANT NOTE** Labour Force Survey (LFS) and Annual Population Survey (APS) responses are weighted to official population projections. As the current projections are 2018-based they are based on demographic trends that pre-date the COVID-19 pandemic. ONS are analysing the population totals used in the weighting process and intend to make adjustments where appropriate. Rates published from the LFS/APS remain robust; however, levels and changes in levels should be used with caution. This will particularly affect estimates for country of birth, nationality, ethnicity and disability.

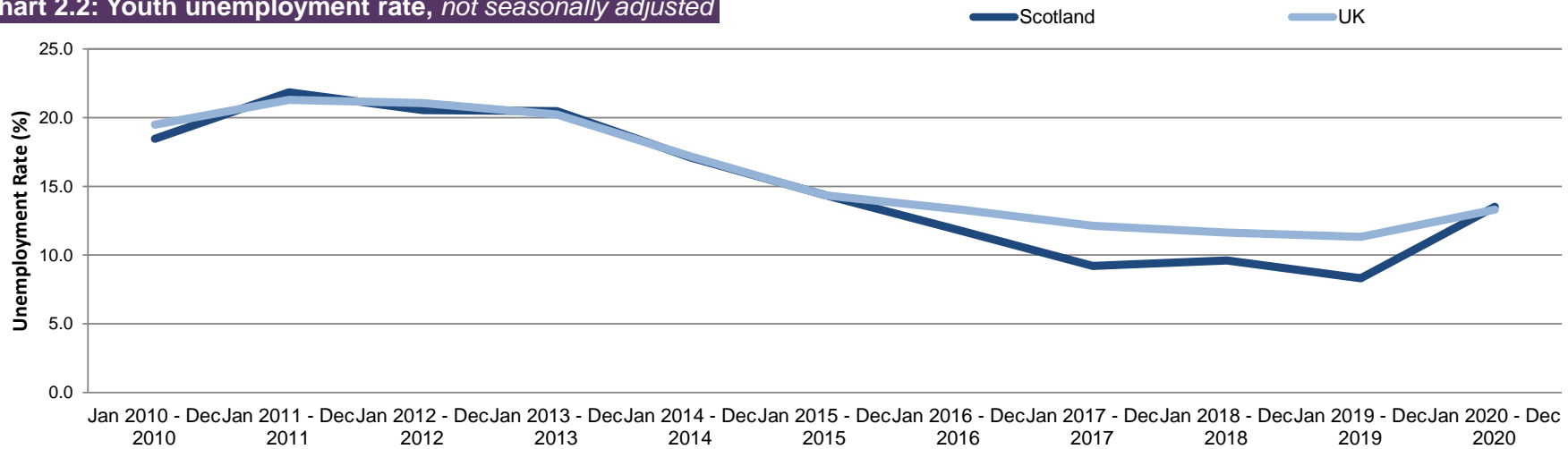


**Charts 2.1 and 2.2: Youth employment and unemployment, Scotland and UK (APS)**

**Chart 2.1: Youth employment rate, *not seasonally adjusted***



**Chart 2.2: Youth unemployment rate, *not seasonally adjusted***



Source: Annual Population Survey, ONS

**Table 2.2: Employment, ILO unemployment and inactivity for 16-24 age group by gender, Scotland and UK (APS), Jan 2020 - Dec 2020**

Scotland										
	Level ('000)					Rate				
	Level	Change on year		change on Jan 2010 - Dec 2010		Rate (%)	Change on year (%pts)		change on Jan 2010 - Dec 2010	
<b>Employment*</b>										
Male	147	-16	↓	-26	↓	52.4	-4.9	↓	-3.7	↓
Female	142	-22	↓	-28	↓	51.3	-7.1	↓	-3.7	↓
<b>ILO Unemployment **</b>										
Male	24	6	↑	-22	↓	14.1	4.1	↑	-7.0	↓
Female	21	9	↑	-11	↓	12.9	6.3	↑	-2.7	↓
<b>Inactivity *</b>										
Male	109	6	↑	20	↑	39.0	2.7	↑	10.0	↑
Female	114	8	↑	6	↑	41.1	3.6	↑	6.2	↑
UK										
	Level ('000)					Rate				
	Level	Change on year		change on Jan 2010 - Dec 2010		Rate (%)	Change on year (%pts)		change on Jan 2010 - Dec 2010	
<b>Employment*</b>										
Male	1,814	-84	↓	-52	↓	51.7	-2.0	↓	0.9	↑
Female	1,779	-60	↓	-13	↓	53.0	-1.5	↓	3.7	↑
<b>ILO Unemployment **</b>										
Male	309	21	↑	-218	↓	14.6	1.4	↑	-7.5	↓
Female	242	53	↑	-116	↓	12.0	2.7	↑	-4.7	↓
<b>Inactivity *</b>										
Male	1,384	40	↑	103	↑	39.5	1.4	↑	4.6	↑
Female	1,336	-14	↓	-152	↓	39.8	-0.2	↓	-1.1	↓

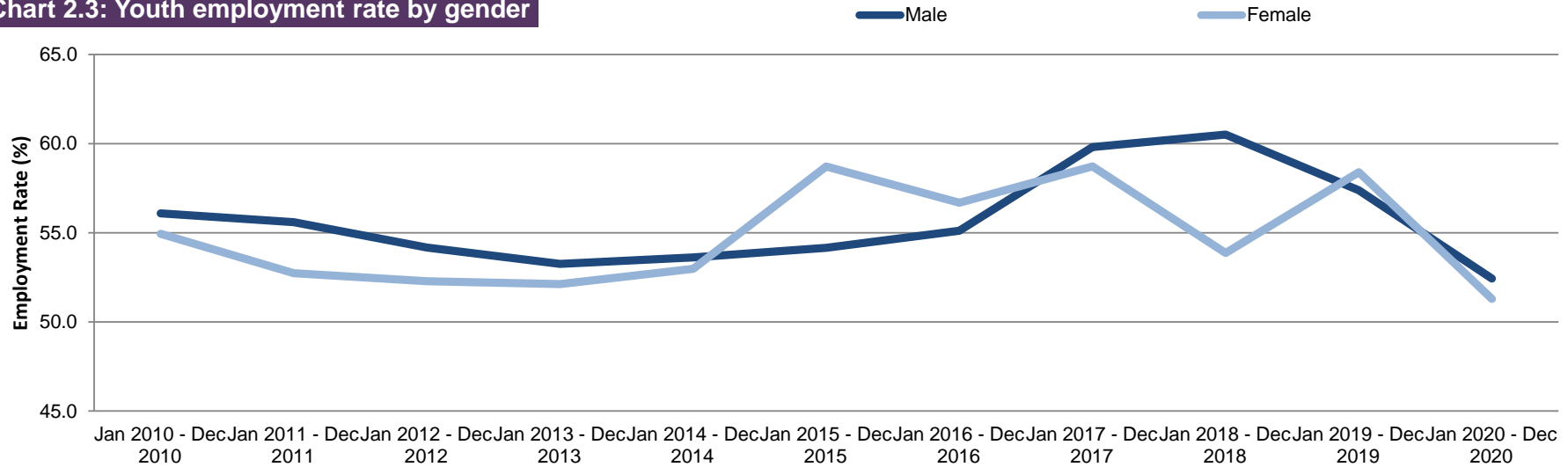
Source: Annual Population Survey, ONS

Notes: \*denominator = 16-24 population; \*\* denominator = economically active population aged 16-24

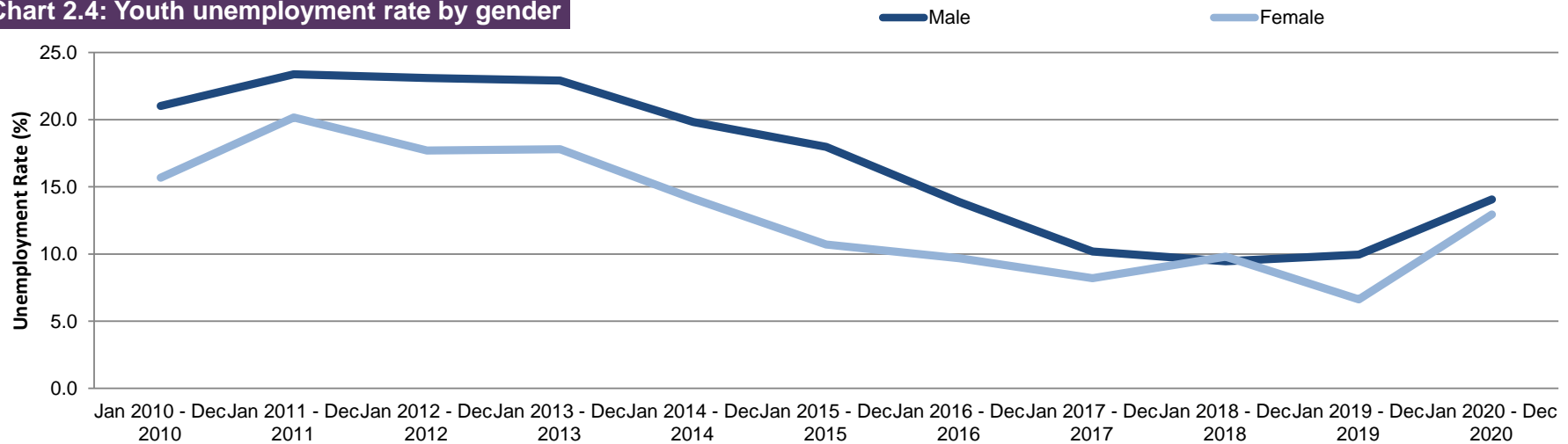
**IMPORTANT NOTE** Labour Force Survey (LFS) and Annual Population Survey (APS) responses are weighted to official population projections. As the current projections are 2018-based they are based on demographic trends that pre-date the COVID-19 pandemic. ONS are analysing the population totals used in the weighting process and intend to make adjustments where appropriate. Rates published from the LFS/APS remain robust; however, levels and changes in levels should be used with caution. This will particularly affect estimates for country of birth, nationality, ethnicity and disability.

**Charts 2.3 and 2.4: Youth employment and unemployment by gender, Scotland (APS)**

**Chart 2.3: Youth employment rate by gender**



**Chart 2.4: Youth unemployment rate by gender**



Source: Annual Population Survey, ONS

**Table 2.3: Youth Unemployment (16-24) by Government Office Region (LFS), Dec-Feb 2021**  
not seasonally adjusted (Official Statistics)

	Level (000's)	change on year	change on 2011	Rate (%)	%pt change on year	%pt change on 2011
North East	26	-5 ↓	-16 ↓	15.1	-1.9 ↓	-7.0 ↓
North West	64	6 ↑	-49 ↓	14.5	2.5 ↑	-6.5 ↓
Yorkshire and The Humber	45	-1 ↓	-32 ↓	12.8	0.8 ↑	-6.5 ↓
East Midlands	47	5 ↑	-21 ↓	14.2	1.7 ↑	-6.1 ↓
West Midlands	54	-4 ↓	-50 ↓	15.0	0.0 ↔	-10.9 ↓
East	35	3 ↑	-30 ↓	9.6	1.1 ↑	-6.1 ↓
London	90	26 ↑	-31 ↓	19.5	6.8 ↑	-3.9 ↓
South East	57	4 ↑	-32 ↓	10.7	2.0 ↑	-3.5 ↓
South West	42	6 ↑	-20 ↓	12.0	2.3 ↑	-4.0 ↓
Wales	31	15 ↑	-24 ↓	15.7	7.1 ↑	-8.6 ↓
Northern Ireland	11	4 ↑	-17 ↓	11.5	5.7 ↑	-11.2 ↓
<b>Scotland</b>	33	-3 ↓	-49 ↓	10.0	-0.4 ↓	-9.7 ↓
<b>United Kingdom</b>	537	56 ↑	-371 ↓	13.4	2.2 ↑	-6.4 ↓
England	461	40 ↑	-281 ↓	13.7	2.1 ↑	-5.8 ↓

Source: Labour Force Survey, ONS

**Table 2.4: Youth Employment (16-24) by UK Countries and Regions (LFS), Dec-Feb 2021**  
not seasonally adjusted (Official Statistics)

	Level (000's)	change on year	change on 2011	Rate (%)	%pt change on year	%pt change on 2011
North East	148	-6 ↓	0 ↔	51.8	-1.6 ↓	5.1 ↑
North West	380	-52 ↓	-46 ↓	50.2	-6.5 ↓	-0.1 ↓
Yorkshire and The Humber	305	-34 ↓	-17 ↓	50.1	-5.3 ↓	0.7 ↑
East Midlands	284	-8 ↓	17 ↑	55.5	-1.2 ↓	5.5 ↑
West Midlands	307	-23 ↓	10 ↑	48.3	-3.3 ↓	3.4 ↑
East	324	-20 ↓	-25 ↓	55.9	-3.3 ↓	0.2 ↑
London	374	-67 ↓	-26 ↓	40.4	-7.4 ↓	-0.1 ↓
South East	478	-76 ↓	-61 ↓	53.0	-8.1 ↓	-4.4 ↓
South West	308	-26 ↓	-16 ↓	55.5	-4.4 ↓	-0.9 ↓
Wales	170	-12 ↓	-3 ↓	50.7	-3.1 ↓	3.6 ↑
Northern Ireland	83	-27 ↓	-11 ↓	41.8	-13.2 ↓	-0.1 ↓
<b>Scotland</b>	302	-8 ↓	-37 ↓	54.6	-0.6 ↓	0.2 ↑
<b>United Kingdom</b>	3,460	-359 ↓	-214 ↓	50.6	-4.9 ↓	0.6 ↑
England	2,907	-312 ↓	-163 ↓	50.5	-5.2 ↓	0.4 ↑

Source: Labour Force Survey, ONS

**Quality indicator**

Shaded estimates are based on a small sample size. This may result in a less precise estimates, which should be used with caution.

Unshaded estimates are based on a larger sample size. This is likely to result in estimates of higher precision, although they will still be subject to some sampling variability.

**Note on data sources:** The Labour Force Survey (LFS) is a survey of households collected and published by the Office for National Statistics (ONS). Further information on reliability can be accessed in the ONS publication at: <https://www.ons.gov.uk/employmentandlabourmarket/peopleinwork/employmentandemployeetypes/methodologies/measuringandreportingreliabilityoflabourforcesurveyandannualpopulationsurveyestimates>

The LFS estimates are from the same source as the headline figures but due to the relatively small sample sizes and subsequent sampling variability, the figures should be used with caution and are designated as Official Statistics. The preferred source of labour market indicators by age band for regions/countries of the UK is the Annual Population Survey (APS). The APS estimates are available in the headline indicator tables (HI01 to HI12) of the ONS Labour market in the regions of the UK release: <https://www.ons.gov.uk/employmentandlabourmarket/peopleinwork/employmentandemployeetypes/bulletins/regionallabourmarket/previousReleases>

**IMPORTANT NOTE** Labour Force Survey (LFS) and Annual Population Survey (APS) responses are weighted to official population projections. As the current projections are 2018-based they are based on demographic trends that pre-date the COVID-19 pandemic. ONS are analysing the population totals used in the weighting process and intend to make adjustments where appropriate. Rates published from the LFS/APS remain robust; however, levels and changes in levels should be used with caution. This will particularly affect estimates for country of birth, nationality, ethnicity and disability.

**Table 3.1a: Employment rates and levels of the population aged 16-64 by disability status, Scotland 2014-2020 (APS)**

	Equality Act Disabled Employment		Not Equality Act Disabled Employment		Disabled Employment Rate Gap (%pt)
	Rate	Level (000s)	Rate	Level (000s)	
Jan 2014 - Dec 2014	41.5	251	79.4	2,213	37.9
Jan 2015 - Dec 2015	41.9	263	80.3	2,229	38.4
Jan 2016 - Dec 2016	42.8	279	80.2	2,217	37.4
Jan 2017 - Dec 2017	45.3	297	81.2	2,245	35.9
Jan 2018 - Dec 2018	45.6	307	81.1	2,231	35.5
Jan 2019 - Dec 2019	49.0	349	81.6	2,215	32.6
Jan 2020 - Dec 2020†	46.9	333	80.6	2,183	33.7
<i>Change on year</i>	<i>-2.1</i>	<i>-16</i>	<i>-1.0</i>	<i>-32</i>	<i>1.1</i>

Source: Annual Population Survey, ONS

**Table 3.1b: Employment rates and levels of the population aged 16-64 by disability status, Scotland 2013-2020 (LFS)**

*not seasonally adjusted*

	Equality Act Disabled Employment		Not Equality Act Disabled Employment		Disabled Employment Rate Gap (%pt)
	Rate	Level (000s)	Rate	Level (000s)	
Oct-Dec 2013	41.3	242	79.1	2,223	37.8
Oct-Dec 2014	40.8	236	81.2	2,287	40.3
Oct-Dec 2015	44.7	264	81.3	2,282	36.6
Oct-Dec 2016	41.9	279	81.7	2,250	39.8
Oct-Dec 2017	46.5	299	81.1	2,253	34.6
Oct-Dec 2018	46.1	287	82.1	2,293	36.0
Oct-Dec 2019	50.0	358	81.5	2,207	31.5
Oct-Dec 2020†	44.3	324	81.6	2,198	37.2
<i>Change on year</i>	<i>-5.7</i>	<i>-34</i>	<i>0.0</i>	<i>-9</i>	<i>5.7</i>

Source: Labour Force Survey, ONS

Questions used to derive current disability status of a person were changed in the April-June 2013 dataset. Subsequent datasets are therefore not directly comparable to equivalent periods in earlier years. See **Notes (p43)** for further information.

Information is shown from the Labour Force Survey (LFS) and the Annual Population Survey (APS) for the same measure. Although the LFS is more timely, the APS is based on a larger sample size and therefore has a higher degree of reliability.

† **IMPORTANT NOTE** Labour Force Survey (LFS) and Annual Population Survey (APS) responses are weighted to official population projections. As the current projections are 2018-based they are based on demographic trends that pre-date the COVID-19 pandemic. ONS are analysing the population totals used in the weighting process and intend to make adjustments where appropriate. Rates published from the LFS/APS remain robust; however, levels and changes in levels should be used with caution. This will particularly affect estimates for country of birth, nationality, ethnicity and disability.

**Table 3.2: Employment rates and levels of the population aged 16-64 by ethnicity and gender, Scotland, 2011 - 2020**  
*not seasonally adjusted*

**All**

	White Employment		Minority Ethnic Employment		Ethnicity Employment Rate Gap (%pt)
	Rate	Level (000s)	Rate	Level (000s)	
Jan 2011 - Dec 2011	70.8	2,348	61.4	72	9.4
Jan 2012 - Dec 2012	71.0	2,332	59.0	80	12.0
Jan 2013 - Dec 2013	71.3	2,351	56.0	67	15.4
Jan 2014 - Dec 2014	73.2	2,386	60.0	90	13.2
Jan 2015 - Dec 2015	73.7	2,401	58.9	85	14.8
Jan 2016 - Dec 2016	73.8	2,401	57.5	98	16.3
Jan 2017 - Dec 2017	75.0	2,444	60.4	107	14.5
Jan 2018 - Dec 2018	75.1	2,453	55.4	97	19.7
Jan 2019 - Dec 2019	75.7	2,460	59.3	115	16.4
Jan 2020 - Dec 2020†	74.0	2,412	64.1	117	10.0
<i>Change on year</i>	-1.7	-48	4.7	2	-6.5

**Male**

	White Employment		Minority Ethnic Employment		Ethnicity Employment Rate Gap (%pt)
	Rate	Level (000s)	Rate	Level (000s)	
Jan 2011 - Dec 2011	74.9	1,211	72.9	45	2.1
Jan 2012 - Dec 2012	74.6	1,196	72.1	49	2.5
Jan 2013 - Dec 2013	74.8	1,202	63.8	39	11.0
Jan 2014 - Dec 2014	76.7	1,221	72.6	53	4.1
Jan 2015 - Dec 2015	76.3	1,214	73.3	51	3.0
Jan 2016 - Dec 2016	77.1	1,228	71.5	58	5.7
Jan 2017 - Dec 2017	78.1	1,243	71.9	63	6.2
Jan 2018 - Dec 2018	78.5	1,256	67.3	55	11.2
Jan 2019 - Dec 2019	78.5	1,250	69.0	61	9.5
Jan 2020 - Dec 2020†	76.2	1,214	74.1	65	2.1
<i>Change on year</i>	-2.3	-36	5.1	3	-7.4

**Female**

	White Employment		Minority Ethnic Employment		Ethnicity Employment Rate Gap (%pt)
	Rate	Level (000s)	Rate	Level (000s)	
Jan 2011 - Dec 2011	66.9	1,136	48.9	27	18.0
Jan 2012 - Dec 2012	67.6	1,136	45.6	31	21.9
Jan 2013 - Dec 2013	68.0	1,149	47.7	28	20.4
Jan 2014 - Dec 2014	69.8	1,165	48.1	37	21.8
Jan 2015 - Dec 2015	71.2	1,187	45.2	33	26.0
Jan 2016 - Dec 2016	70.6	1,173	44.8	40	25.7
Jan 2017 - Dec 2017	72.0	1,200	49.4	44	22.6
Jan 2018 - Dec 2018	71.8	1,197	45.0	42	26.8
Jan 2019 - Dec 2019	73.1	1,210	51.1	54	22.0
Jan 2020 - Dec 2020†	72.0	1,198	54.9	52	17.1
<i>Change on year</i>	-1.1	-12	3.7	-1	-4.9

Source: Annual Population Survey, ONS (Jan-Dec datasets)

† **IMPORTANT NOTE** Labour Force Survey (LFS) and Annual Population Survey (APS) responses are weighted to official population projections. As the current projections are 2018-based they are based on demographic trends that pre-date the COVID-19 pandemic. ONS are analysing the population totals used in the weighting process and intend to make adjustments where appropriate. Rates published from the LFS/APS remain robust; however, levels and changes in levels should be used with caution. This will particularly affect estimates for country of birth, nationality, ethnicity and disability.

**Table 3.3: Employment patterns, Scotland, Dec-Feb 2021, (Thousands)**  
*not seasonally adjusted*

	Dec-Feb 2021	Change on 2008 (000s)			Change on year (000s)	
Total‡	2,662	118	↑	-13	↓	
Employees‡	2,352	99	↑	20	↑	
Self employed‡	300	29	↑	-30	↓	
Unpaid family workers	6	-4	↓	2	↑	
Government-supported training and employment programmes	3	-6	↓	-4	↓	
Full-time workers	1,982	76	↑	20	↑	
Part-time workers	675	39	↑	-33	↓	
Workers with second jobs	91	-6	↓	-5	↓	
Temporary workers	117	8	↑	-8	↓	
<b>All males in employment</b>						
Total‡	1,338	15	↑	-23	↓	
Employees‡	1,146	28	↑	-1	↓	
Self employed‡	183	-13	↓	-21	↓	
Unpaid family workers	6	3	↑	4	↑	
Government-supported training and employment programmes	*	*	■	*	■	
Full-time workers	1,164	-22	↓	-28	↓	
Part-time workers	172	35	↑	6	↑	
Workers with second jobs	34	-6	↓	-3	↓	
Temporary workers	48	-2	↓	-5	↓	
<b>All females in employment</b>						
Total‡	1,324	102	↑	10	↑	
Employees‡	1,206	71	↑	21	↑	
Self employed‡	117	42	↑	-9	↓	
Unpaid family workers	*	*	■	*	■	
Government-supported training and employment programmes	*	*	■	*	■	
Full-time workers	819	97	↑	49	↑	
Part-time workers	503	4	↑	-39	↓	
Workers with second jobs	57	0	↔	-1	↓	
Temporary workers	69	10	↑	-3	↓	

Source: Labour Force Survey, ONS

‡ Includes people who did not state whether they worked part-time or full-time.

\* Estimate suppressed as below reliability threshold.

#### Quality indicator

Shaded estimates are based on a small sample size. This may result in a less precise estimates, which should be used with caution.

Unshaded estimates are based on a larger sample size. This is likely to result in estimates of higher precision, although they will still be subject to some sampling variability.

**IMPORTANT NOTE** Labour Force Survey (LFS) and Annual Population Survey (APS) responses are weighted to official population projections. As the current projections are 2018-based they are based on demographic trends that pre-date the COVID-19 pandemic. ONS are analysing the population totals used in the weighting process and intend to make adjustments where appropriate. Rates published from the LFS/APS remain robust; however, levels and changes in levels should be used with caution. This will particularly affect estimates for country of birth, nationality, ethnicity and disability.

**Table 3.4: Underemployment, Scotland and UK, 2010-2020**  
*not seasonally adjusted*

	Scotland		UK	
	Rate (%)	Level (000s)	Rate (%)	Level (000s)
Jan 2010 - Dec 2010	9.4	232	9.3	2,678
Jan 2011 - Dec 2011	9.9	243	9.7	2,782
Jan 2012 - Dec 2012	10.0	246	10.0	2,897
Jan 2013 - Dec 2013	9.6	237	10.0	2,937
Jan 2014 - Dec 2014	8.6	216	9.2	2,749
Jan 2015 - Dec 2015	9.2	234	8.6	2,651
Jan 2016 - Dec 2016	8.4	214	8.1	2,521
Jan 2017 - Dec 2017	8.0	209	7.8	2,467
Jan 2018 - Dec 2018	7.4	194	6.9	2,199
Jan 2019 - Dec 2019	7.1	187	7.1	2,272
Jan 2020 - Dec 2020†	8.1	210	7.6	2,451
<i>change on year (%pt for rate)</i>	<i>1.0</i>	<i>22</i>	<i>0.6</i>	<i>179</i>
<i>change on Jan 2010 - Dec 2010 (%pt for rate)</i>	<i>-1.4</i>	<i>-22</i>	<i>-1.7</i>	<i>-226</i>

Source: Annual Population Survey, ONS

Notes:

1 - Levels and rates based on working population aged 16 and over

2 - Underemployment rate based on those in employment (excludes those who did not respond to underemployment questions)

3 - Underemployment includes:

- those looking for more hours in their current role at same rate of pay
- those looking for an additional job
- those looking for a replacement job with more hours than their current job.

† **IMPORTANT NOTE** Labour Force Survey (LFS) and Annual Population Survey (APS) responses are weighted to official population projections. As the current projections are 2018-based they are based on demographic trends that pre-date the COVID-19 pandemic. ONS are analysing the population totals used in the weighting process and intend to make adjustments where appropriate. Rates published from the LFS/APS remain robust; however, levels and changes in levels should be used with caution. This will particularly affect estimates for country of birth, nationality, ethnicity and disability.



**Table 3.5: Employment rates by highest qualification held and gender, Scotland and UK, Jan 2020 - Dec 2020**  
*not seasonally adjusted*

	Scotland			UK		
	Jan 2020 - Dec 2020	Change on year (%pt)		Jan 2020 - Dec 2020	Change on year (%pt)	
<b>All</b>						
Degree level and above	84.1	-0.2	↓	86.1	-0.4	↓
SVQ 4	79.1	-1.2	↓	80.8	-0.4	↓
SVQ 3	70.8	-3.2	↓	75.1	-0.9	↓
SVQ 2	64.7	-3.4	↓	67.3	-2.2	↓
SVQ 1	49.6	-5.9	↓	62.1	-2.3	↓
Other qualification	69.6	-5.5	↓	74.4	-0.7	↓
No qualifications	46.2	-5.1	↓	43.3	-2.6	↓
<b>Males</b>						
Degree level and above	85.6	-0.7	↓	88.6	-0.6	↓
SVQ 4	83.5	0.1	↑	84.6	-0.7	↓
SVQ 3	75.0	-4.3	↓	78.2	-1.5	↓
SVQ 2	67.9	-3.9	↓	71.7	-2.4	↓
SVQ 1	53.5	-6.0	↓	67.4	-4.1	↓
Other qualification	78.0	-3.7	↓	81.5	-3.8	↓
No qualifications	48.1	-5.1	↓	50.4	-3.6	↓
<b>Females</b>						
Degree level and above	82.8	0.2	↑	83.9	-0.2	↓
SVQ 4	75.5	-2.3	↓	77.5	-0.3	↓
SVQ 3	65.5	-1.6	↓	71.5	0.0	↔
SVQ 2	62.0	-2.9	↓	63.3	-2.1	↓
SVQ 1	45.1	-6.7	↓	55.9	-0.7	↓
Other qualification	60.4	-6.6	↓	65.0	2.7	↑
No qualifications	44.0	-5.3	↓	35.0	-1.9	↓

Source: Annual Population Survey, ONS

**Table 4.1: Unemployment by duration, Annual Population Survey, Jan 2020 - Dec 2020**  
*not seasonally adjusted*

<b>Scotland</b>	<b>Level (000s)</b>	<b>Change on year</b>			<b>% Change on year</b>	
Less than 6 months	71	16	↑	28.2	↑	
6 months and less than 12 months	17	5	↑	40.3	↑	
1 year and less than 2 years	12	-1	↓	-8.9	↓	
2 years or more	17	2	↑	12.2	↑	

<b>UK</b>	<b>Level (000s)</b>	<b>Change on year</b>			<b>% Change on year</b>	
Less than 6 months	991	193	↑	24.1	↑	
6 months and less than 12 months	233	43	↑	22.8	↑	
1 year and less than 2 years	149	-14	↓	-8.7	↓	
2 years or more	161	7	↑	4.5	↑	

Source: Annual Population Survey, ONS

Note: Levels based on persons aged 16 and over

**IMPORTANT NOTE** Labour Force Survey (LFS) and Annual Population Survey (APS) responses are weighted to official population projections. As the current projections are 2018-based they are based on demographic trends that pre-date the COVID-19 pandemic. ONS are analysing the population totals used in the weighting process and intend to make adjustments where appropriate. Rates published from the LFS/APS remain robust; however, levels and changes in levels should be used with caution. This will particularly affect estimates for country of birth, nationality, ethnicity and disability.

**Table 4.2: Model-based unemployment levels and rates by local authority**  
*not seasonally adjusted*

	Jan 2020-Dec 2020		Change on year			Change on Jan 2010-Dec 2010				
	Rate	Level	Rate (%pt)		Level Change	Rate (%pt)		Level Change		
Aberdeen City	4.5	5,500	1.4	↑	1,400	↑	-0.6	↓	-1,000	↓
Aberdeenshire	2.8	4,000	0.5	↑	700	↑	-0.8	↓	-1,000	↓
Angus	3.9	2,100	0.7	↑	300	↑	-2.7	↓	-1,700	↓
Argyll and Bute	3.4	1,400	0.5	↑	200	↑	-2.8	↓	-1,300	↓
City of Edinburgh	3.9	11,100	1.3	↑	3,900	↑	-2.6	↓	-4,900	↓
Clackmannanshire	4.7	1,200	1.4	↑	400	↑	-2.8	↓	-900	↓
Dumfries and Galloway	4.1	2,600	0.9	↑	400	↑	-1.8	↓	-1,800	↓
Dundee City	5.5	4,000	0.1	↑	200	↑	-3.7	↓	-2,900	↓
East Ayrshire	5.2	3,000	0.7	↑	300	↑	-3.8	↓	-2,600	↓
East Dunbartonshire	3.2	1,700	0.6	↑	300	↑	-2.9	↓	-1,500	↓
East Lothian	4.1	2,200	1.4	↑	700	↑	-2.8	↓	-1,200	↓
East Renfrewshire	3.5	1,600	0.8	↑	400	↑	-2.5	↓	-1,100	↓
Falkirk	4.4	3,700	0.7	↑	700	↑	-3.4	↓	-2,500	↓
Fife	4.8	8,500	0.7	↑	1,200	↑	-3.8	↓	-7,400	↓
Glasgow City	5.3	17,300	0.6	↑	2,800	↑	-6.6	↓	-16,400	↓
Highland	3.2	3,900	0.4	↑	600	↑	-1.4	↓	-1,800	↓
Inverclyde	5.2	1,800	0.4	↑	100	↑	-3.0	↓	-1,600	↓
Midlothian	3.6	1,700	0.9	↑	400	↑	-3.8	↓	-1,400	↓
Moray	3.6	1,800	0.4	↑	200	↑	-1.0	↓	-500	↓
Na h-Eileanan Siar	3.2	400	0.8	↑	100	↑	-3.3	↓	-400	↓
North Ayrshire	5.3	3,100	0.0	↔	-200	↓	-6.5	↓	-4,400	↓
North Lanarkshire	5.3	8,800	1.2	↑	1,700	↑	-5.1	↓	-8,900	↓
Orkney Islands	2.7	300	0.8	↑	100	↑	-0.6	↓	-100	↓
Perth and Kinross	3.7	2,800	1.4	↑	900	↑	-1.6	↓	-1,000	↓
Renfrewshire	4.3	4,000	0.6	↑	600	↑	-4.5	↓	-3,600	↓
Scottish Borders	3.3	1,900	0.3	↑	200	↑	-2.8	↓	-1,400	↓
Shetland Islands	2.5	300	0.3	↑	0	↔	-1.0	↓	-200	↓
South Ayrshire	4.9	2,500	1.2	↑	600	↑	-3.9	↓	-2,200	↓
South Lanarkshire	4.2	6,900	1.0	↑	1,800	↑	-3.5	↓	-5,500	↓
Stirling	3.5	1,600	-0.3	↓	-200	↓	-3.6	↓	-1,500	↓
West Dunbartonshire	5.0	2,200	0.6	↑	200	↑	-5.4	↓	-2,400	↓
West Lothian	4.0	3,800	1.1	↑	1,000	↑	-3.1	↓	-2,800	↓
<b>Scotland</b>	<b>4.3</b>	<b>117,500</b>	<b>0.8</b>	<b>↑</b>	<b>21,700</b>	<b>↑</b>	<b>-3.4</b>	<b>↓</b>	<b>-88,000</b>	<b>↓</b>

Sources: Annual Population Survey (ONS), Claimant Count (ONS)

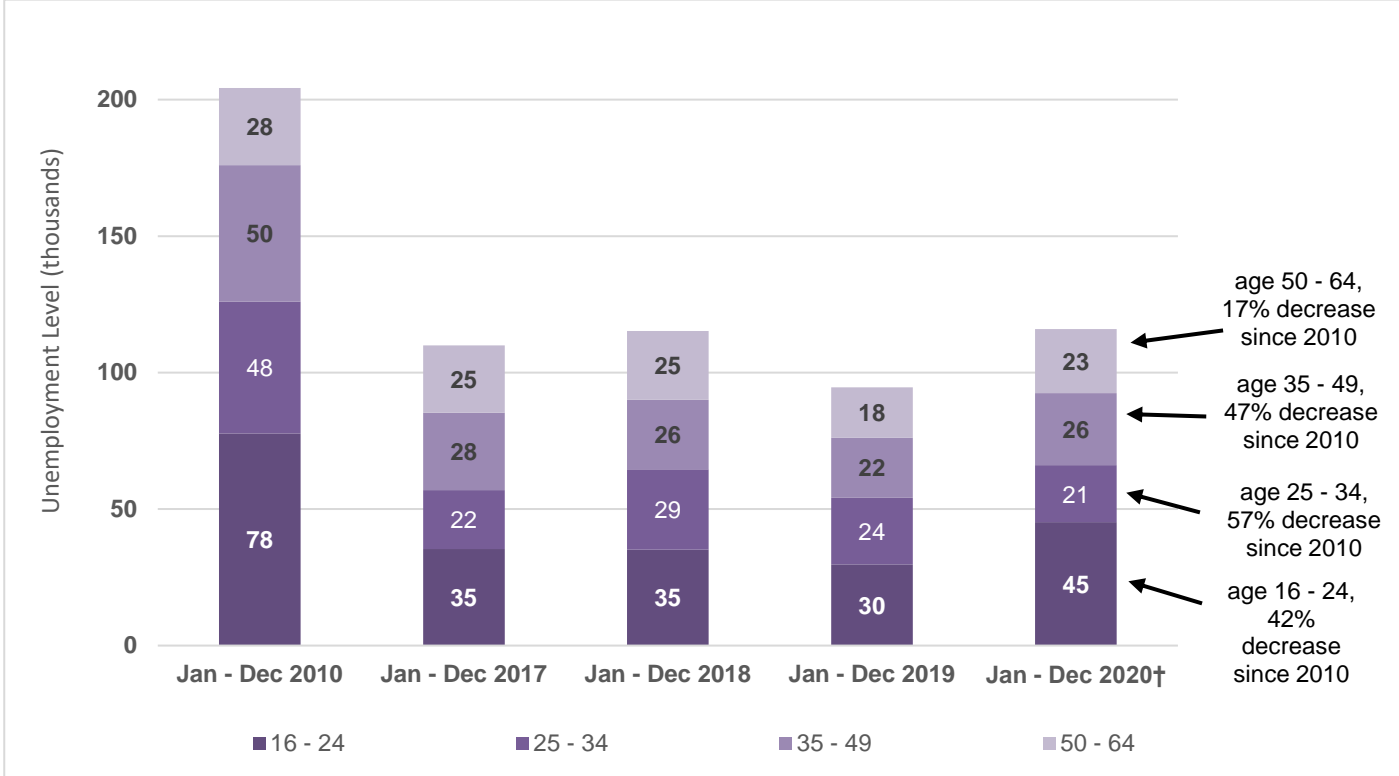
Notes:

\* Estimate and confidence interval unreliable since the group sample size is small (3-9).

1. Levels rounded to the nearest hundred.
2. Proportions are calculated on unrounded figures.
3. Totals may not equal the sum of individual parts due to rounding.

**IMPORTANT NOTE** Labour Force Survey (LFS) and Annual Population Survey (APS) responses are weighted to official population projections. As the current projections are 2018-based they are based on demographic trends that pre-date the COVID-19 pandemic. ONS are analysing the population totals used in the weighting process and intend to make adjustments where appropriate. Rates published from the LFS/APS remain robust; however, levels and changes in levels should be used with caution. This will particularly affect estimates for country of birth, nationality, ethnicity and disability.

**Chart 4.1: ILO unemployment levels by age-group (16-64), Scotland**  
*not seasonally adjusted*

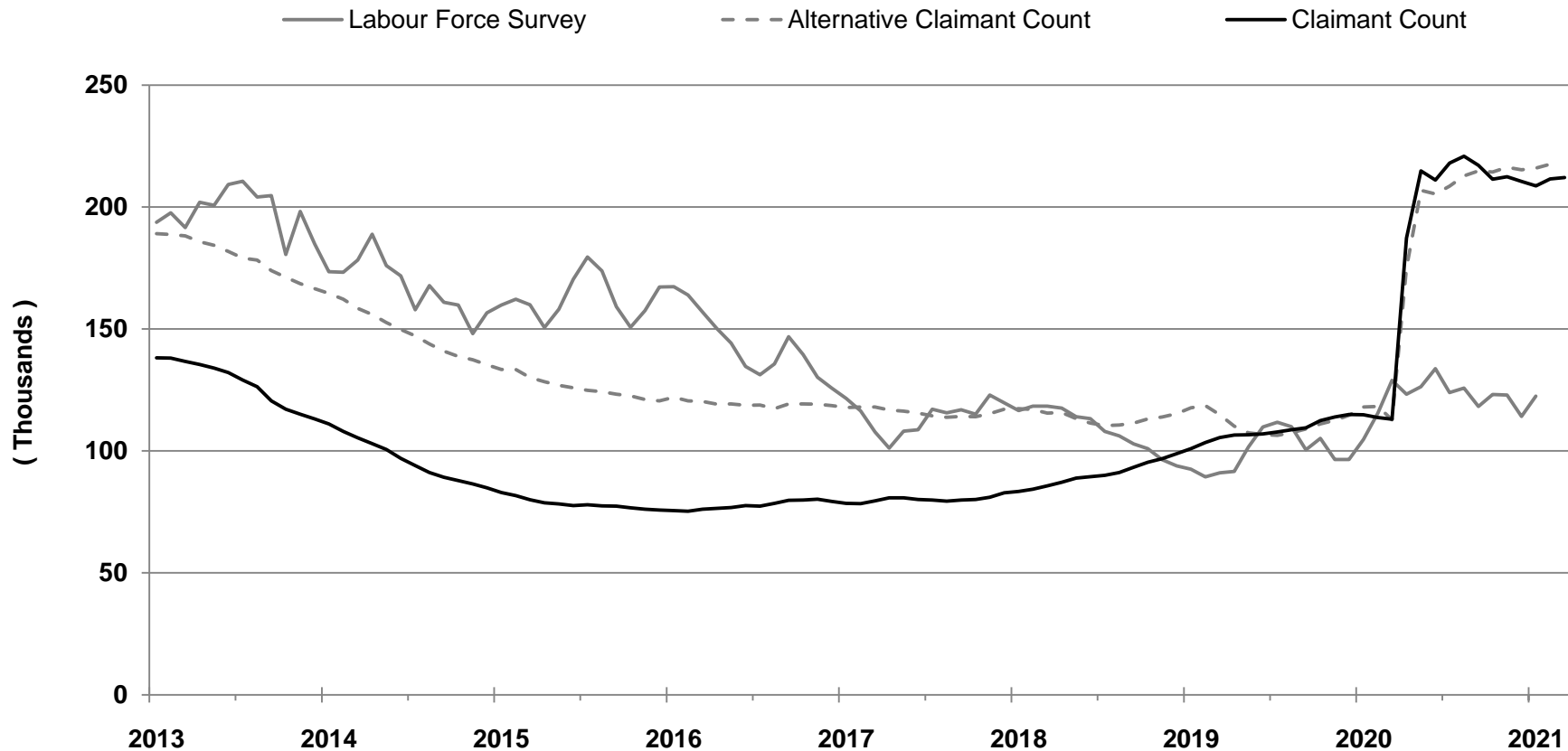


Source: Annual Population Survey, ONS (Jan-Dec datasets)

†**IMPORTANT NOTE** Labour Force Survey (LFS) and Annual Population Survey (APS) responses are weighted to official population projections. As the current projections are 2018-based they are based on demographic trends that pre-date the COVID-19 pandemic. ONS are analysing the population totals used in the weighting process and intend to make adjustments where appropriate. Rates published from the LFS/APS remain robust; however, levels and changes in levels should be used with caution. This will particularly affect estimates for country of birth, nationality, ethnicity and disability.

**Chart 5.1: Unemployment, Alternative Claimant Count and Claimant Count levels, Scotland, January 2013 - March 2021**

*seasonally adjusted*



Sources: Labour Force Survey (ONS): Dec-Feb 2013 - Dec-Feb 2021

Claimant Count (ONS), Jan 2013 - Mar 2021

Alternative Claimant Count (DWP): Jan 2013 - Feb 2021

**IMPORTANT NOTE** Labour Force Survey (LFS) and Annual Population Survey (APS) responses are weighted to official population projections. As the current projections are 2018-based they are based on demographic trends that pre-date the COVID-19 pandemic. ONS are analysing the population totals used in the weighting process and intend to make adjustments where appropriate. Rates published from the LFS/APS remain robust; however, levels and changes in levels should be used with caution. This will particularly affect estimates for country of birth, nationality, ethnicity and disability.

**Table 5.1a: Claimant Count levels, March 2021 - (Experimental data)**

	Level	Change on previous month		Change on previous year		Change on March 2013	
	(000s)	(000s)		(000s)		(000s)	
Scotland	212	1	↑	99	↑	75	↑
England	2,291	10	↑	1,246	↑	1,040	↑
Wales	112	0	↔	53	↑	34	↑
N Ireland	58	0	↔	28	↑	-6	↓
UK	2,674	10	↑	1,426	↑	1,143	↑

**Table 5.1b: Claimant Count rates, March 2021 - (Experimental data)**

	Rate	Change on previous month		Change on previous year		Change on March 2013	
	(%)	(%pts)		(%pts)		(%pts)	
Scotland	7.6	0.0	↔	3.5	↑	2.6	↑
England	7.5	0.0	↔	4.1	↑	3.1	↑
Wales	7.4	0.0	↔	3.5	↑	2.0	↑
N Ireland	6.3	0.0	↔	3.0	↑	-1.0	↓
UK	7.4	0.0	↔	4.0	↑	2.9	↑

Source: Claimant Count, ONS (seasonally adjusted)

Notes:

1. Levels rounded to nearest 1000.
2. The Claimant Count rate is calculated as a proportion of Claimant Count + Workforce jobs.
3. Claimant count rates are workplace based.
4. Data in these tables are seasonally adjusted. Therefore, they are not consistent with Table 5.2 onwards as these are based on data that is not seasonally adjusted.

ONS re-classified the Claimant Count series as experimental following the introduction of DWP Universal Credit and concerns that this series may be misleading.

**See Notes (page 43) for further information.**

**Table 5.2: Claimant Count by local authority (Experimental data)**  
*not seasonally adjusted*

	March 2021 Total Claimants	% Change on year		Claimant Count rate (%)	Change on year (%pts)	
Aberdeen City	9,720	133.3	↑	6.2	4.0	↑
Aberdeenshire	6,605	123.7	↑	4.1	2.5	↑
Angus	3,770	86.0	↑	5.4	2.3	↑
Argyll and Bute	2,890	91.4	↑	5.7	3.0	↑
City of Edinburgh	18,525	154.3	↑	5.1	3.5	↑
Clackmannanshire	2,090	54.4	↑	6.5	2.2	↑
Dumfries and Galloway	4,700	61.4	↑	5.4	2.4	↑
Dundee City	6,915	55.8	↑	7.0	2.3	↑
East Ayrshire	5,715	58.2	↑	7.5	2.5	↑
East Dunbartonshire	2,560	107.1	↑	4.0	2.1	↑
East Lothian	3,520	104.9	↑	5.4	2.5	↑
East Renfrewshire	2,145	119.9	↑	3.8	2.3	↑
Falkirk	6,075	82.7	↑	5.9	2.5	↑
Fife	14,880	68.8	↑	6.4	2.5	↑
Glasgow City	36,815	81.4	↑	8.2	4.6	↑
Highland	7,810	113.4	↑	5.4	2.8	↑
Inverclyde	3,045	37.6	↑	6.3	1.1	↑
Midlothian	3,095	107.2	↑	5.4	2.9	↑
Moray	3,030	92.6	↑	5.1	2.5	↑
Na h-Eileanan Siar	780	68.1	↑	5.0	2.7	↑
North Ayrshire	6,795	51.1	↑	8.3	2.6	↑
North Lanarkshire	14,530	76.7	↑	6.6	2.7	↑
Orkney Islands	385	90.6	↑	2.9	1.4	↑
Perth and Kinross	4,200	125.9	↑	4.6	2.7	↑
Renfrewshire	7,285	81.3	↑	6.3	3.1	↑
Scottish Borders	3,660	92.7	↑	5.4	2.8	↑
Shetland Islands	450	70.7	↑	3.2	1.8	↑
South Ayrshire	4,635	68.2	↑	7.0	3.0	↑
South Lanarkshire	12,730	80.7	↑	6.3	2.7	↑
Stirling	2,765	81.0	↑	4.6	2.0	↑
West Dunbartonshire	4,525	56.8	↑	8.0	3.9	↑
West Lothian	6,570	90.3	↑	5.6	2.8	↑
<b>Scotland</b>	<b>213,205</b>	<b>86.0</b>	<b>↑</b>	<b>6.1</b>	<b>3.0</b>	<b>↑</b>

Source: Claimant Count, ONS

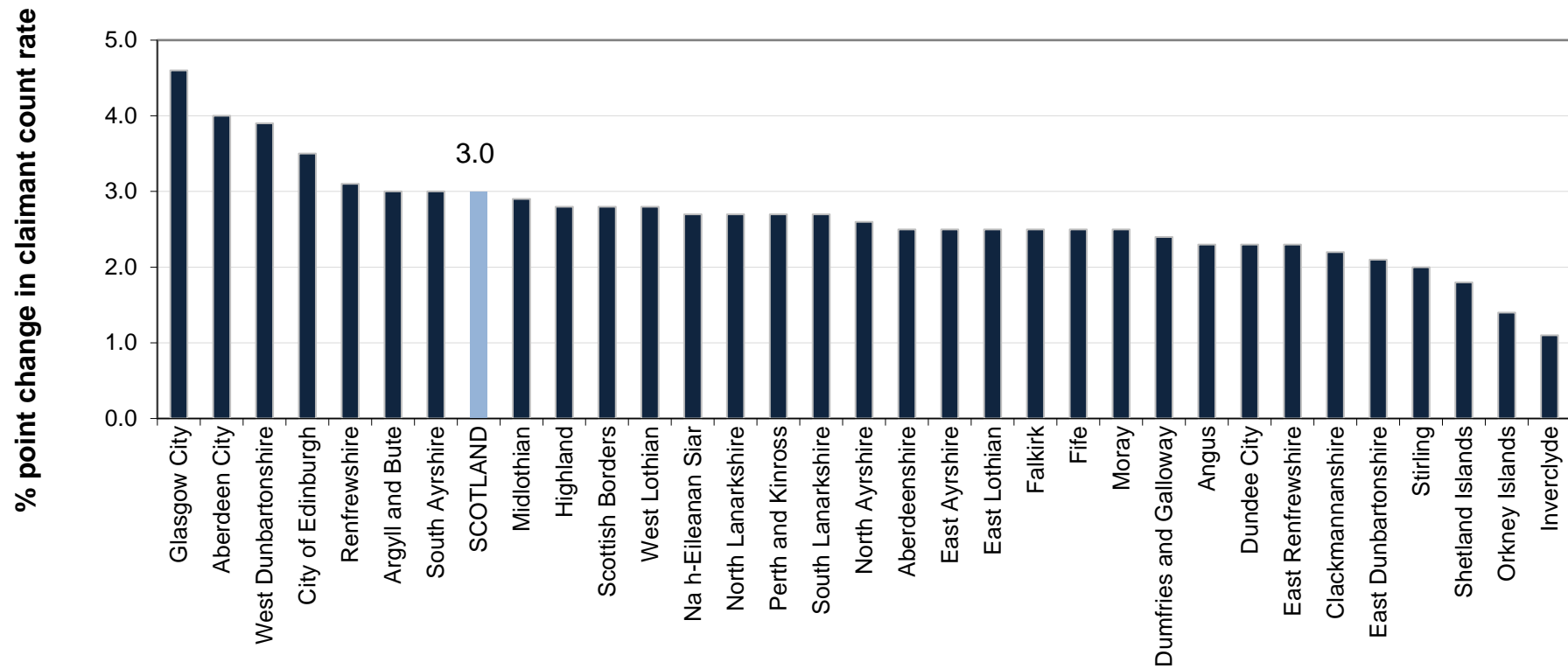
Notes:

1. Levels rounded to nearest 5.
2. The Claimant Count rate is calculated as a proportion of the resident population, aged 16-64, based on the Mid-year population estimates for 2018.

ONS re-classified the Claimant Count series as experimental following the introduction of DWP Universal Credit and concerns that this series may be misleading.

See Notes (page 43) for further information.

Chart 5.2: Change in Claimant Count rate by local authority, March 2020 to March 2021 (Experimental data)



Source: Claimant Count, ONS

Notes:

1. Claimant Count rates are based on unrounded data. Chart labels are rounded to one decimal place.
2. Claimant Count rates in each local authority and for Scotland are calculated as a proportion of the resident population, aged 16-64, based on the Mid-year population estimates for 2018.



**Table 5.3: 16-24 Claimant Count levels and rates, Scotland and UK**  
**(Experimental data)**  
*not seasonally adjusted*

	Scotland		UK	
	Level	Rate (%)	Level	Rate (%)
<b>March 2020</b>	22,235	3.9	241,760	3.4
<b>March 2021</b>	40,935	7.1	515,945	7.3
<b>Change on year (rate as %pt)</b>	18,700	3.3	274,190	3.9

Source: Claimant Count, ONS

**Table 5.4: 16-24 Claimant Count levels and rates by gender, Scotland**  
**(Experimental data)**  
*not seasonally adjusted*

	Male		Female	
	Level	Rate (%)	Level	Rate (%)
<b>March 2020</b>	14,225	4.9	8,010	2.8
<b>March 2021</b>	25,805	8.9	15,130	5.4
<b>Change on year (rate as %pt)</b>	11,575	4.0	7,125	2.5

Source: Claimant Count, ONS

Notes:

1. Levels rounded to nearest 5.
2. These Claimant Count rates for 16-24 year olds have been produced by the Scottish Government and are calculated as a proportion of the resident population, aged 16-24, based on the Mid-year population estimates for 2019.

ONS re-classified the Claimant Count series as experimental following the introduction of DWP Universal Credit and concerns that this series may be misleading.

**See Notes (page 43) for further information.**

**Table 5.5: 16-24 Claimant Count levels and rates by Local Authority, March 2021 (Experimental data)**

	Level			Rate		
	March 2021	Change on year		March 2021	Change on year (%pts)	
<b>Scotland</b>	<b>40,935</b>	<b>18,700</b>	<b>↑</b>	<b>7.1</b>	<b>3.3</b>	<b>↑</b>
<i>Local Authority Area</i>						
Aberdeen City	1,740	920	↑	6.5	3.4	↑
Aberdeenshire	1,340	685	↑	5.9	3.0	↑
Angus	775	340	↑	7.2	3.2	↑
Argyll and Bute	495	250	↑	6.1	3.1	↑
City of Edinburgh	2,950	1,825	↑	4.5	2.8	↑
Clackmannanshire	460	115	↑	9.0	2.3	↑
Dumfries and Galloway	875	280	↑	6.6	2.1	↑
Dundee City	1,510	525	↑	7.2	2.5	↑
East Ayrshire	1,180	470	↑	10.0	4.0	↑
East Dunbartonshire	495	245	↑	4.8	2.4	↑
East Lothian	710	375	↑	7.3	3.9	↑
East Renfrewshire	430	240	↑	4.5	2.5	↑
Falkirk	1,260	580	↑	8.1	3.8	↑
Fife	3,080	1,230	↑	7.7	3.1	↑
Glasgow City	6,255	2,845	↑	7.8	3.6	↑
Highland	1,495	830	↑	7.0	3.9	↑
Inverclyde	570	130	↑	7.5	1.7	↑
Midlothian	675	350	↑	7.9	4.1	↑
Moray	665	310	↑	7.2	3.3	↑
Na h-Eileanan Siar	120	55	↑	5.8	2.6	↑
North Ayrshire	1,400	530	↑	10.4	3.9	↑
North Lanarkshire	2,930	1,280	↑	8.2	3.6	↑
Orkney Islands	95	50	↑	5.1	2.7	↑
Perth and Kinross	860	500	↑	6.3	3.6	↑
Renfrewshire	1,395	625	↑	7.7	3.5	↑
Scottish Borders	785	355	↑	7.8	3.5	↑
Shetland Islands	100	45	↑	4.8	1.9	↑
South Ayrshire	970	400	↑	9.4	3.9	↑
South Lanarkshire	2,405	1,045	↑	7.8	3.4	↑
Stirling	595	275	↑	4.8	2.2	↑
West Dunbartonshire	880	315	↑	10.1	3.6	↑
West Lothian	1,450	675	↑	8.0	3.7	↑

Source: Claimant Count, ONS

Notes:

1. Levels rounded to nearest 5.

2. These Claimant Count rates for 16-24 year olds have been produced by the Scottish Government and are calculated as a proportion of the resident population, aged 16-24, based on the Mid-year population estimates for 2019.

ONS re-classified the Claimant Count series as experimental following the introduction of DWP Universal Credit and concerns that this series may be misleading.

See Notes (page 43) for further information.

**Table 6.1a: Alternative Claimant Count levels, February 2021 - (Experimental data)**

	Level	Change on previous month		Change on previous year		Change on February 2013	
	(000s)	(000s)		(000s)		(000s)	
Scotland	218	2	↑	99	↑	29	↑
England	2,462	56	↑	1,281	↑	592	↑
Wales	119	0	↔	52	↑	6	↑
N Ireland	65	1	↑	30	↑	-19	↓
UK	2,867	58	↑	1,466	↑	610	↑

**Table 6.1b: Alternative Claimant Count rates, February 2021 - (Experimental data)**

	Rate	Change on previous month		Change on previous year		Change on February 2013	
	(%)	(%pts)		(%pts)		(%pts)	
Scotland	6.2	0.0	↔	2.8	↑	0.8	↑
England	7.0	0.2	↑	3.6	↑	1.6	↑
Wales	6.2	0.0	↔	2.7	↑	0.3	↑
N Ireland	5.5	0.1	↑	2.6	↑	-1.7	↓
UK	6.9	0.1	↑	3.5	↑	1.4	↑

Source: *Alternative Claimant Count, DWP, seasonally adjusted*

Notes:

1. Levels rounded to nearest 1000.
2. The Alternative Claimant Count is the total number of people claiming unemployment-related benefits. This comprises those claiming either Jobseeker's Allowance or Universal Credit (under the Searching for Work conditionality) along with estimates of additional claimants who would have been searching for work under Universal Credit had it existed over the entire period since 2013.
3. The Alternative Claimant Count rate is calculated as a proportion of the resident population, aged 16-64, based on the Mid-year population estimates for 2019.
4. The Alternative Claimant Count publication is available online at (based on 'Table 2\_region') <https://www.gov.uk/government/statistics/alternative-claimant-count-statistics-january-2013-to-february-2021>

**Table 6.2: Alternative Claimant Count by local authority (Experimental data)**

*not seasonally adjusted*

	February 2021 Total Claimants	% Change on year		Alternative Claimant Count rate (%)	Change on year (%pts)	
Aberdeen City	9,394	113.8	↑	6.0	3.2	↑
Aberdeenshire	6,504	113.7	↑	4.0	2.1	↑
Angus	3,623	77.6	↑	5.2	2.3	↑
Argyll and Bute	2,804	88.7	↑	5.5	2.6	↑
City of Edinburgh	18,548	142.7	↑	5.1	3.0	↑
Clackmannanshire	2,047	54.1	↑	6.4	2.2	↑
Dumfries and Galloway	4,455	56.3	↑	5.1	1.8	↑
Dundee City	6,862	57.6	↑	6.9	2.5	↑
East Ayrshire	5,595	58.3	↑	7.4	2.7	↑
East Dunbartonshire	2,453	105.8	↑	3.8	1.9	↑
East Lothian	3,385	100.5	↑	5.2	2.6	↑
East Renfrewshire	2,031	107.0	↑	3.6	1.8	↑
Falkirk	5,729	76.0	↑	5.6	2.4	↑
Fife	14,582	67.6	↑	6.3	2.5	↑
Glasgow City	35,466	75.5	↑	7.9	3.4	↑
Highland	7,325	122.5	↑	5.1	2.8	↑
Inverclyde	2,823	41.1	↑	5.8	1.7	↑
Midlothian	2,903	107.2	↑	5.1	2.6	↑
Moray	2,951	86.9	↑	5.0	2.3	↑
Na h-Eileanan Siar	695	65.9	↑	4.5	1.8	↑
North Ayrshire	6,323	45.1	↑	7.7	2.4	↑
North Lanarkshire	13,842	78.0	↑	6.3	2.8	↑
Orkney Islands	345	83.5	↑	2.6	1.2	↑
Perth and Kinross	4,048	115.4	↑	4.4	2.4	↑
Renfrewshire	6,736	74.9	↑	5.9	2.5	↑
Scottish Borders	3,605	90.1	↑	5.3	2.5	↑
Shetland Islands	420	67.3	↑	3.0	1.2	↑
South Ayrshire	4,610	67.7	↑	7.0	2.8	↑
South Lanarkshire	11,898	85.3	↑	5.9	2.7	↑
Stirling	2,678	77.2	↑	4.4	1.9	↑
West Dunbartonshire	4,327	56.3	↑	7.7	2.8	↑
West Lothian	6,283	82.6	↑	5.4	2.4	↑
<b>Scotland</b>	<b>205,290</b>	<b>82.5</b>	<b>↑</b>	<b>5.9</b>	<b>2.7</b>	<b>↑</b>

Source: Alternative Claimant Count, DWP

Notes:

1. The Alternative Claimant Count is the total number of people claiming unemployment-related benefits. This comprises those claiming either Jobseeker's Allowance or Universal Credit (under the Searching for Work conditionality) along with estimates of additional claimants who would have been searching for work under Universal Credit had it existed over the entire period since 2013.
2. The Alternative Claimant Count rates are calculated as a proportion of the resident population, aged 16-64, based on the Mid-year population estimates for 2019.

**Table 6.3: 16-24 Alternative Claimant Count levels and rates, Scotland and UK (Experimental data)**

	Scotland		UK	
	Level	Rate (%)	Level	Rate (%)
<b>February 2020</b>	19,792	3.4	218,748	3.1
<b>February 2021</b>	37,987	6.6	490,980	6.9
<b>Change on year (rate as %pt)</b>	18,195	3.2	272,232	3.8

Source: Alternative Claimant Count, DWP

**Table 6.4: 16-24 Alternative Claimant Count levels and rates by gender, Scotland (Experimental data)**

	Male		Female	
	Level	Rate (%)	Level	Rate (%)
<b>February 2020</b>	12,550	4.3	7,242	2.6
<b>February 2021</b>	24,045	8.2	13,945	4.9
<b>Change on year (rate as %pt)</b>	11,495	3.9	6,703	2.4

Source: Alternative Claimant Count, DWP

Notes:

1. The Alternative Claimant Count is the total number of people claiming unemployment-related benefits. This comprises those claiming either Jobseeker's Allowance or Universal Credit (under the Searching for Work conditionality) along with estimates of additional claimants who would have been searching for work under Universal Credit had it existed over the entire period since 2013.
2. The Alternative Claimant Count rate is calculated as a proportion of the resident population, aged 16-64, based on the Mid-year population estimates for 2019.

**Table 6.5: 16-24 Alternative Claimant Count levels and rates by Local Authority (Experimental data)**

	Level			Rate		
	February 2021	Change on year		February 2021	Change on year (%pts)	
<b>Scotland</b>	<b>37,987</b>	<b>18,195</b>	<b>↑</b>	<b>6.6</b>	<b>3.2</b>	<b>↑</b>
<i>Local Authority Area</i>						
Aberdeen City	1,617	832	↑	6.0	3.1	↑
Aberdeenshire	1,214	637	↑	5.3	2.8	↑
Angus	735	328	↑	6.9	3.1	↑
Argyll and Bute	464	243	↑	5.7	3.0	↑
City of Edinburgh	2,843	1,827	↑	4.4	2.8	↑
Clackmannanshire	439	134	↑	8.6	2.6	↑
Dumfries and Galloway	787	266	↑	6.0	2.0	↑
Dundee City	1,438	570	↑	6.9	2.7	↑
East Ayrshire	1,112	452	↑	9.4	3.8	↑
East Dunbartonshire	461	238	↑	4.5	2.3	↑
East Lothian	679	390	↑	7.0	4.0	↑
East Renfrewshire	394	232	↑	4.1	2.4	↑
Falkirk	1,181	555	↑	7.6	3.6	↑
Fife	2,889	1,288	↑	7.2	3.2	↑
Glasgow City	5,862	2,756	↑	7.3	3.5	↑
Highland	1,343	789	↑	6.3	3.7	↑
Inverclyde	507	86	↑	6.7	1.1	↑
Midlothian	611	325	↑	7.1	3.8	↑
Moray	611	299	↑	6.6	3.2	↑
Na h-Eileanan Siar	107	55	↑	5.1	2.6	↑
North Ayrshire	1,289	502	↑	9.6	3.7	↑
North Lanarkshire	2,663	1,245	↑	7.4	3.5	↑
Orkney Islands	72	45	↑	3.9	2.4	↑
Perth and Kinross	793	481	↑	5.8	3.5	↑
Renfrewshire	1,265	597	↑	7.0	3.3	↑
Scottish Borders	764	405	↑	7.6	4.0	↑
Shetland Islands	94	43	↑	4.5	2.1	↑
South Ayrshire	915	377	↑	8.9	3.7	↑
South Lanarkshire	2,152	1,006	↑	7.0	3.3	↑
Stirling	558	261	↑	4.5	2.1	↑
West Dunbartonshire	811	302	↑	9.3	3.5	↑
West Lothian	1,305	629	↑	7.2	3.5	↑

Source: *Alternative Claimant Count, DWP*

Notes:

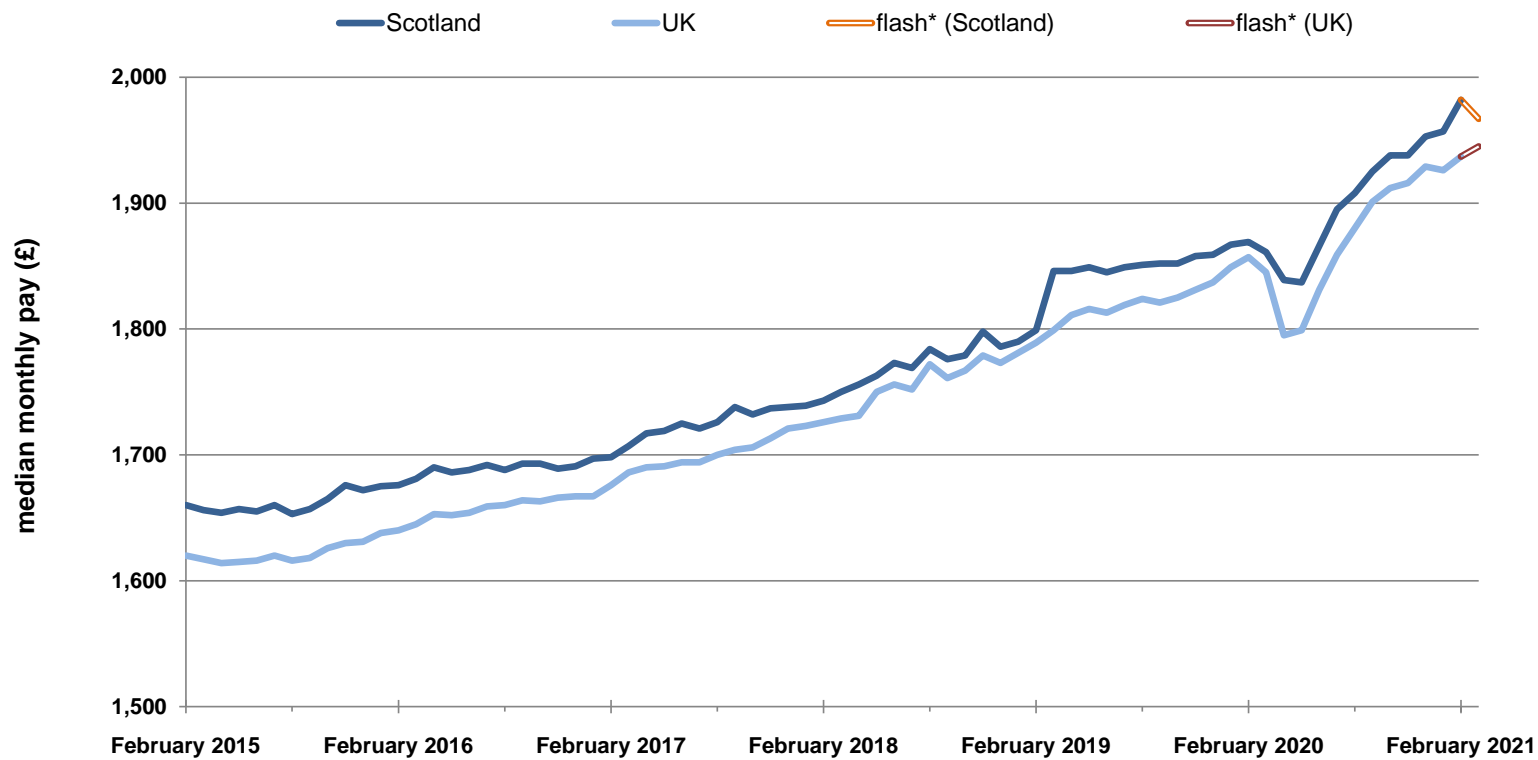
1. The Alternative Claimant Count is the total number of people claiming unemployment-related benefits. This comprises those claiming either Jobseeker's Allowance or Universal Credit (under the Searching for Work conditionality) along with estimates of additional claimants who would have been searching for work under Universal Credit had it existed over the entire period since 2013.
2. The Alternative Claimant Count rates are calculated as a proportion of the resident population, aged 16-64, based on the Mid-year population estimates for 2019.

**Table 7.1: HMRC RTI data, Scotland and UK, February 2015 - February 2021 (Experimental data)**

<b>Scotland</b>	<b>February 2015</b>	<b>February 2016</b>	<b>February 2017</b>	<b>February 2018</b>	<b>February 2019</b>	<b>February 2020</b>	<b>February 2021</b>
<b>Total employees (000s)</b>	2,335	2,356	2,362	2,379	2,394	2,397	2,326
<i>Annual Growth (%)</i>		0.9	0.3	0.7	0.7	0.1	-3.0
<b>Aggregate pay per month (£million)</b>	5,007	5,013	5,105	5,267	5,448	5,610	5,706
<i>Annual Growth (%)</i>		0.1	1.8	3.2	3.4	3.0	1.7
<b>Median monthly pay (£ per month)</b>	1,660	1,676	1,698	1,743	1,799	1,869	1,982
<i>Annual Growth (%)</i>		1.0	1.3	2.7	3.2	3.9	6.0
<b>Mean monthly pay (£ per month)</b>	2,144	2,128	2,161	2,214	2,275	2,341	2,453
<i>Annual Growth (%)</i>		-0.7	1.6	2.5	2.8	2.9	4.8
<b>UK</b>	<b>February 2015</b>	<b>February 2016</b>	<b>February 2017</b>	<b>February 2018</b>	<b>February 2019</b>	<b>February 2020</b>	<b>February 2021</b>
<b>Total employees (000s)</b>	27,214	27,797	28,130	28,490	28,816	29,027	28,255
<i>Annual Growth (%)</i>		2.1	1.2	1.3	1.1	0.7	-2.7
<b>Aggregate pay per month (£million)</b>	60,775	62,181	64,803	67,864	70,228	73,147	75,100
<i>Annual Growth (%)</i>		2.3	4.2	4.7	3.5	4.2	2.7
<b>Median monthly pay (£ per month)</b>	1,620	1,640	1,676	1,726	1,789	1,857	1,937
<i>Annual Growth (%)</i>		1.2	2.2	3.0	3.7	3.8	4.3
<b>Mean monthly pay (£ per month)</b>	2,233	2,237	2,304	2,382	2,437	2,520	2,658
<i>Annual Growth (%)</i>		0.2	3.0	3.4	2.3	3.4	5.5

Source: PAYE real-time information, Seasonally adjusted (HMRC)

**Chart 7.1: Median monthly pay, Scotland and UK, February 2015 - March 2021 (Experimental data)**  
*seasonally adjusted*



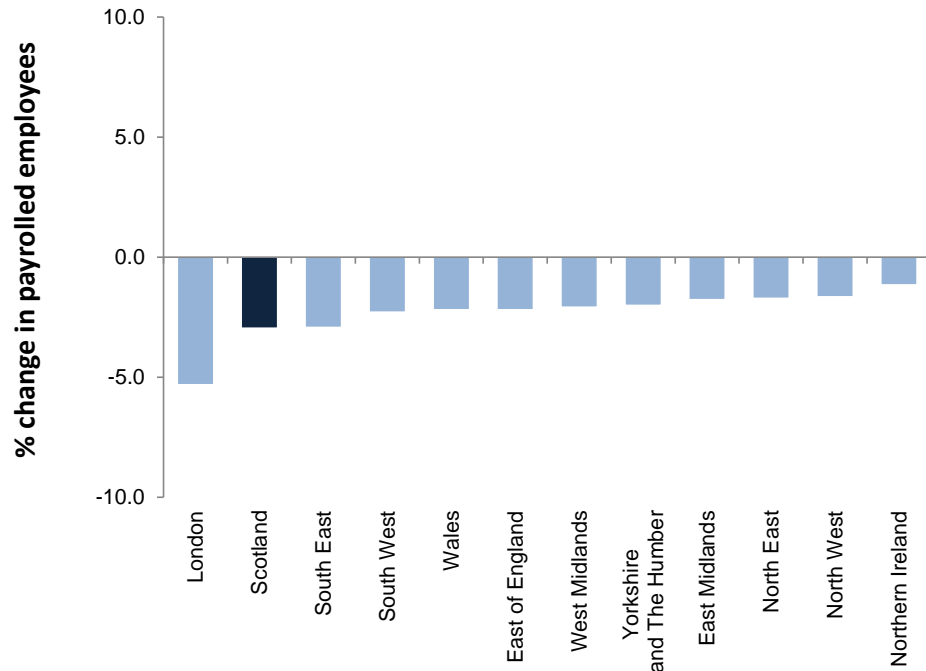
Source: PAYE real-time information (HMRC)

\*flash estimates are for March 2021 and are based on around 85% of required information being available and may be subject to revision.

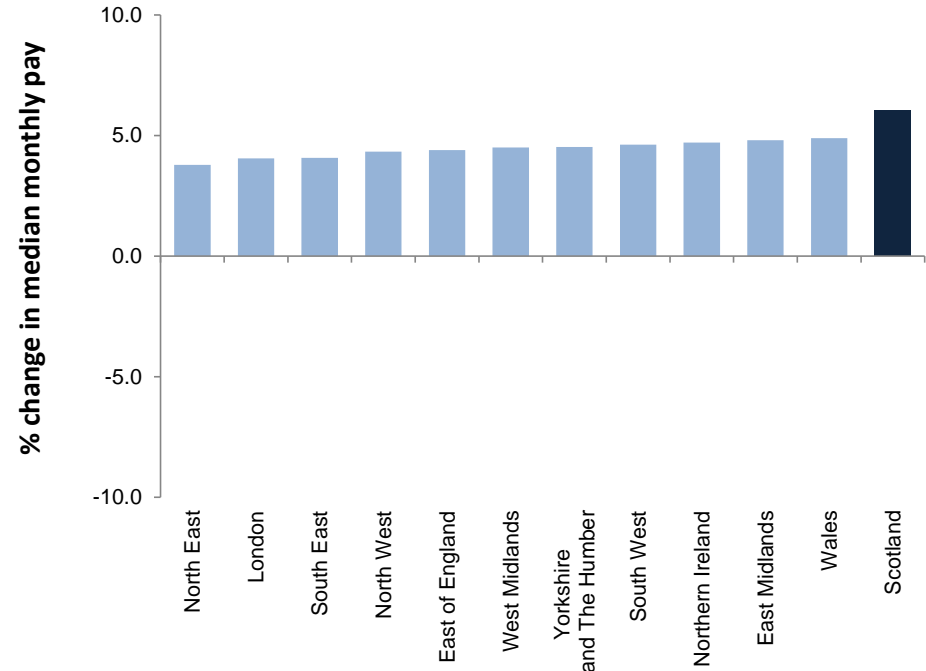


**Charts 7.2 and 7.3: Payrolled employees and median monthly pay by region - annual change, February 2020 to February 2021 (Experimental data)**  
*seasonally adjusted*

**Chart 7.2: Total payrolled employees by Government Office Region - % change on year**  
*seasonally adjusted*



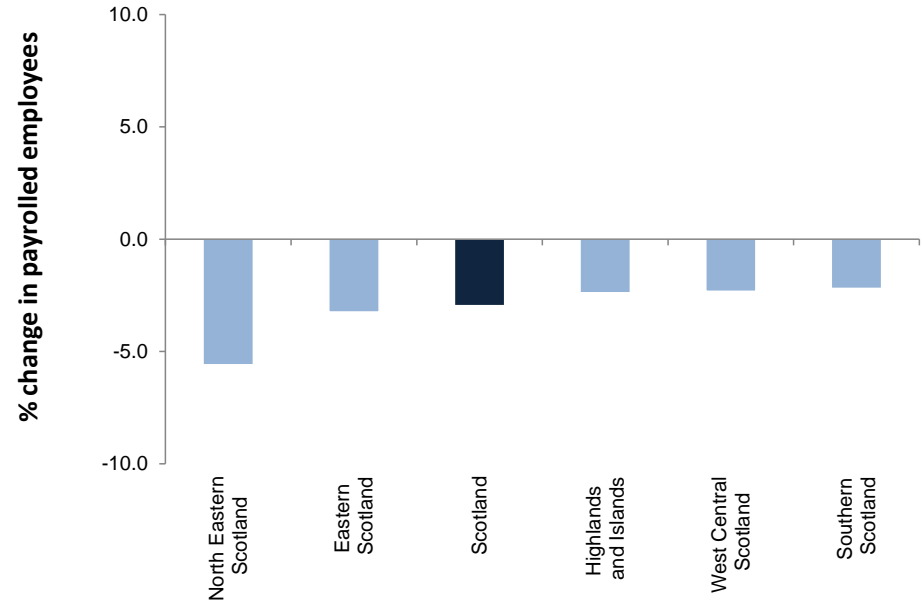
**Chart 7.3: Median monthly pay by Government Office Region - % change on year**  
*seasonally adjusted*



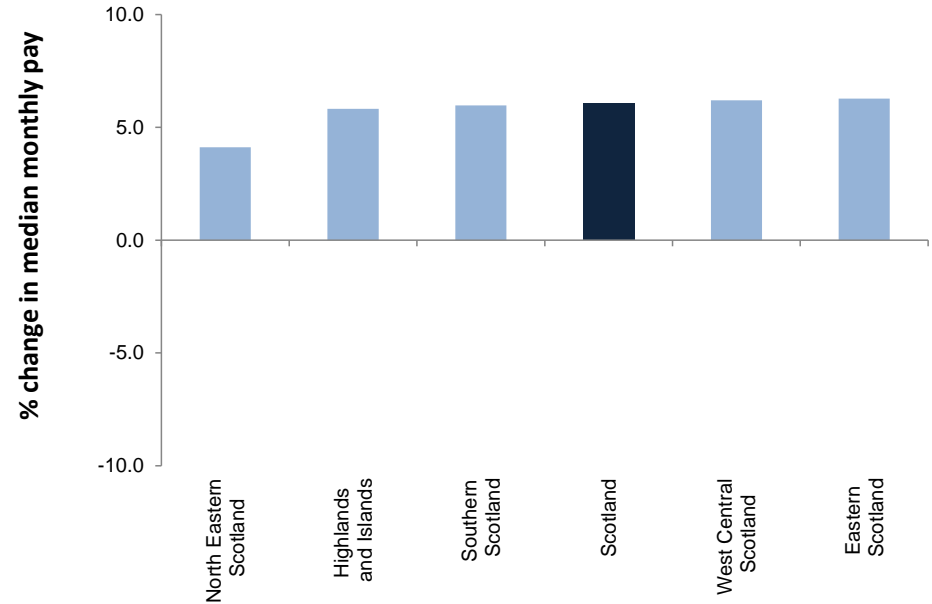
Source: PAYE real-time information (HMRC)

**Charts 7.4 and 7.5: Payrolled employees and median monthly pay (NUTS2) - annual change, February 2020 to February 2021 - (Experimental data)**  
*seasonally adjusted*

**Chart 7.4: Total payrolled employees by NUTS2 region - % change on year**  
*seasonally adjusted*



**Chart 7.5: Median monthly pay by NUTS2 region - % change on year**  
*seasonally adjusted*



Source: PAYE real-time information (HMRC)

## Notes on the LFS/APS estimates [Sections 1 - 4]

**IMPORTANT NOTE** Labour Force Survey (LFS) and Annual Population Survey (APS) responses are weighted to official population projections. As the current projections are 2018-based they are based on demographic trends that pre-date the COVID-19 pandemic. ONS are analysing the population totals used in the weighting process and intend to make adjustments where appropriate. Rates published from the LFS/APS remain robust; however, levels and changes in levels should be used with caution. This will particularly affect estimates for country of birth, nationality, ethnicity and disability. A statement on this can be found on the ONS website

<https://www.ons.gov.uk/employmentandlabourmarket/peopleinwork/employmentandemployeetypes/articles/coronavirusandtheimpactonpayrollemployment/experimentalanalysis>

## Measures of disability [Tables 3.1a and 3.1b]

In the April-June 2013 dataset, and subsequent datasets, questions used to derive current disability status of a person were changed. Estimates are now based on the core definition of disability under the Equality Act 2010, as specified in the Government Statistical Service (GSS) Harmonised Standards for Questions on disability.

- The definition includes people with a health condition or illness lasting 12 months or more that reduces their ability to carry out day-to-day activities.
- The definition excludes certain non-core groups covered by the Equality Act, such as those with progressive or past conditions that do not currently limit their activities, and conditions that only limit their activities without medication or treatment.
- Respondents are now asked to take into account any medication that they are currently taking when previously they were asked to consider their day-to-day activities without the use of medication.

The introduction of this new definition has created a discontinuity in the series and estimates are not directly comparable with earlier periods

## Claimant Count [Section 5]

The Claimant Count is not a measure of unemployment and changes in the Claimant Count will not be wholly because of changes in the number of people who are unemployed. It is a measure of the number of people claiming benefit principally for the reason of being unemployed:

- between January 1971 (when comparable estimates start) and September 1996, it is an estimate of the number of people who would have claimed unemployment-related benefits if Jobseeker's Allowance had existed at that time.
- between October 1996 and April 2013, the Claimant Count is a count of the number of people claiming Jobseeker's Allowance (JSA).
- between May 2013 and October 2013, the Claimant Count includes all claimants of Universal Credit (including those who were in work) as well as all JSA claimants
- from November 2013, the Claimant Count includes all out of work Universal Credit claimants as well as all JSA claimants .
- From April 2015 onwards the claimant count includes those claimants of Universal Credit who are required to search for work, i.e. within the Searching for Work conditionality regime as defined by the Department for Work & Pensions as well as all JSA claimants

Information for March 2021 is for the number of claimants as at 11th March 2021.

## Alternative Claimant Count [Section 6]

The Alternative Claimant Count measures the number of people claiming unemployment-related benefits. Previously, the Claimant Count was simply the number of people claiming Jobseeker's Allowance.

- Since the introduction of Universal Credit in April 2013, Universal Credit claimants who meet the 'Searching for Work' conditionality have been added to overall Claimant Count figures. By bringing more people within the coverage of the Claimant Count, total numbers may rise irrespective of economic performance.
- ONS has withdrawn Claimant Count data from Labour Market Statistics bulletins, stating that it was no longer a reliable economic indicator and could be a misleading representation of changes in the labour market. The Alternative Claimant Count is intended to provide a consistent claimant unemployment series and thus a better indicator of local labour market change over time.
- The new Alternative Claimant Count is not directly comparable to the Claimant Count figures previously published.

Statistics for this new measure are published quarterly by the Department for Work and Pensions (DWP). They are available by calendar month at national and local authority level and can be broken down by gender, age group and type of benefit claimed. Tables 6.1 to 6.5 show experimental Alternative Claimant Count data published by DWP and are updated quarterly. The most recent data was published on 20 April 2021. Further information on this measure can be found at the following link:

<https://www.gov.uk/government/statistics/alternative-claimant-count-statistics-january-2013-to-february-2021>

## Further information

Further Labour Market information can be obtained from the following sites/sources.

### **Scottish Government Labour Market Statistics:**

Further commentary and charts are published in *Labour Market Trends: April 2021*

<https://www.gov.scot/publications/labour-market-trends-april-2021/>

### **Scottish Government Open Data:**

<https://statistics.gov.scot/home>

### **ONS:**

Labour Market Statistics Theme page

<http://www.ons.gov.uk/ons/taxonomy/index.html?nscl=Labour+Market>

Regional Labour Market Statistics

<https://www.ons.gov.uk/employmentandlabourmarket/peopleinwork/employmentandemployeetypes/bulletins/regionallabourmarket/previousReleases>

### **HMRC:**

Earnings and employment statistics from Pay As You Earn (PAYE) Real Time Information

<https://www.gov.uk/government/statistics/uk-real-time-information-experimental-statistics>

### **NOMIS:**

Online database for official labour market statistics

<https://www.nomisweb.co.uk/default.asp>

## Contact details

Telephone: 0131 244 6773

email: [LMStats@gov.scot](mailto:LMStats@gov.scot)