

DEPARTMENT OF AGRICULTURE AND FISHERIES
FOR SCOTLAND

**Scottish Sea Fisheries
Statistical Tables
1987**

Crown copyright 1988
First Published 1988

Brief extracts from this publication may be reproduced provided the source is fully acknowledged; requests for more extensive reproduction and enquiries about this publication should be made to:

Fisheries Economics and Statistics Unit, Department of Agriculture and Fisheries for
Scotland, Room 405, Chesser House, 500 Gorgie Road, Edinburgh EH11 3AW.
Telephone: 031-443 4020 Extension 2145

ISBN 0 7480 0145 X

DEPARTMENT OF AGRICULTURE AND FISHERIES FOR SCOTLAND

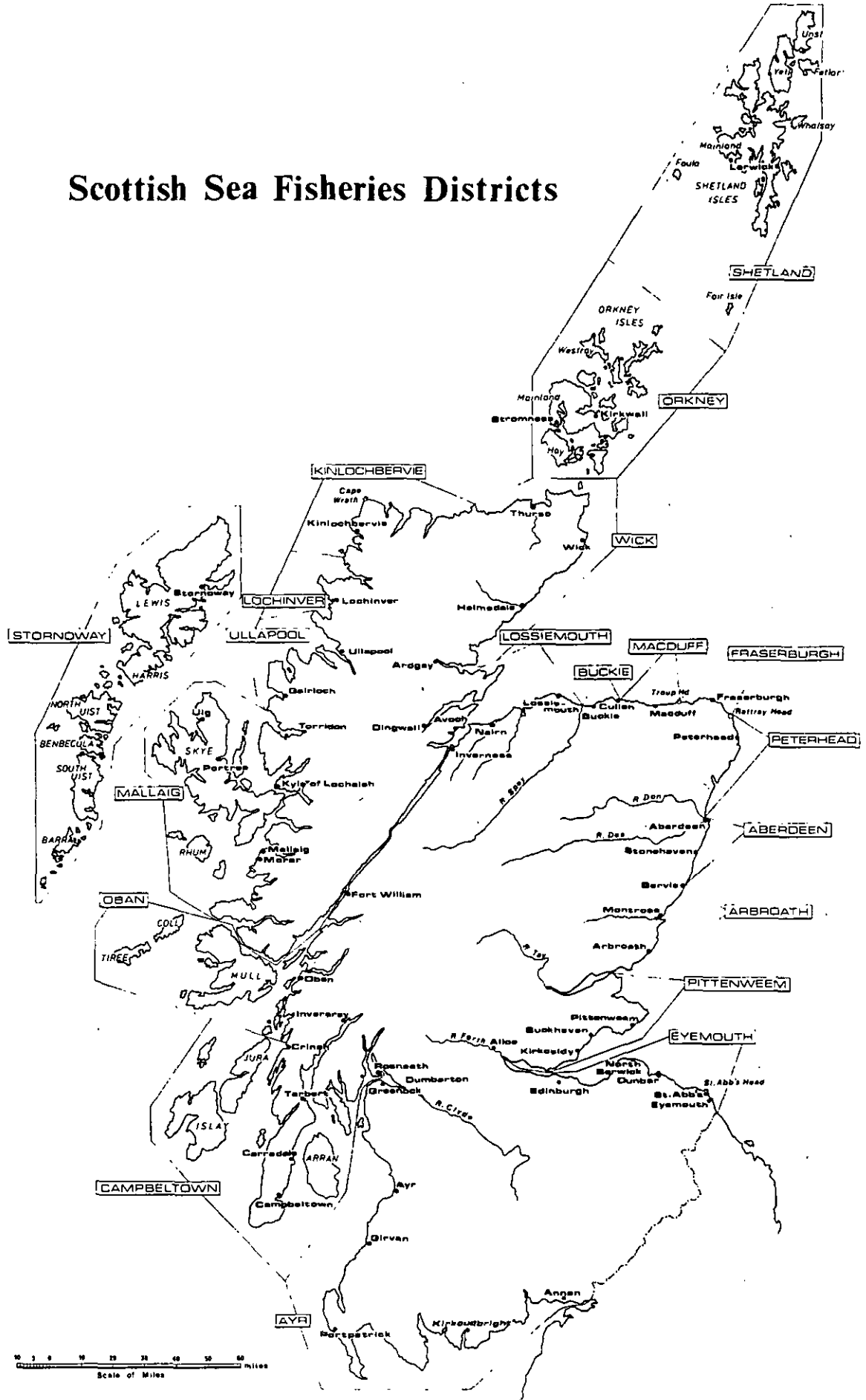
SCOTTISH SEA FISHERIES STATISTICAL TABLES, 1986

CONTENTS

	<i>Pages</i>
Introduction and Explanatory Notes	6
Tables	
1. Fish Landings in United Kingdom	
Country of landing: Weight and value by species groups	9
Country of landing: Weight and value by major individual species	10
2. Fish Landings in Scotland by United Kingdom Vessels	
Weight of each species landed	11
Value of each species landed	12
Average value of each species landed	13
District of Scotland: Weight and value of each species	14
District of Scotland: Weight and value by species groups	20
Method of Fishing: Weight and value	22
Each species by method of fishing: Weight and value	24
Each district by method of fishing and fishing effort: Weight and value	28
Major species by month: Weight, value and average price	30
Value of landings per month by major fishing methods	31
3. Landings in Scotland by United Kingdom Vessels from Specified ICES Division	
Each ICES Division: Fishing effort, Value by species group, Weight by individual species	34
Total North Sea, Northern North Sea, Middle North Sea, West of Scotland: by main fishing method	36
4. Landings by Scottish Vessels and Other United Kingdom Vessels	
Scottish vessels: Base district of vessel by landing district: weight and value	40
Scottish vessels landing in England and Wales and Isle of Man	42
Scottish vessels and United Kingdom vessels landing in United Kingdom	42
Scottish vessels, and other United Kingdom vessels landing in Scotland by length group	43
United Kingdom vessels landing in Scotland by method of fishing and length group	43
5. Landings in Scotland by United Kingdom Vessels	
Weight and value by creek	44
6. Landings in Scotland by Foreign Vessels	
Weight and value of each species landed	47
Nationality of vessel landing: Weight and value	47
Catches from specified ICES Areas by individual species	48
Nationality of vessel, port of landing and method of fishing: by fishing effort, by weight and value	49

	<i>Pages</i>
7. Scottish Fishing Vessels	
Number of vessels by size	51
Number of vessels by size and base district	51
Changes in over 30 feet fleet	52
Number of vessels by method of fishing normally engaged in	52
Fishermen employed	53
Number of vessels by base district and fishermen by district of residence	53
8. Disposal and Processing of Fish	
Disposal of Scottish herring, mackerel and sprat catch	54
Raw materials used in the production of fishery by-products	54
Production of fishing by-products	55
Weight and value of fish processed according to method of process	55

Scottish Sea Fisheries Districts



EXPLANATORY NOTES

Species

The various species of fish are divided into 3 main groups; demersal, pelagic and shellfish. Demersal species live on or near the sea bed; pelagic species are found mainly in shoals near the surface.

Landings

Data on landings in Scotland is obtained from sales notes completed at the first auction of the fish, and additional information on effort and grounds is obtained, from the EC log book completed by the skippers. The quantities in the tables are expressed in terms of a standard landed weight; in the case of demersal fish (excluding Norway Pout and Sandeels) this means gutted fish with head on; for the other species including shellfish it means whole fish.

Vessels (Tables 27, 28, 29 and 30)

Data on vessels is obtained from records kept by the Department and updated by reports of officers in the Sea Fisheries Inspectorate based at each of the Sea Fisheries Districts. All vessels actively engaged in commercial fishing and registered under the Merchant Shipping Act of 1894 are recorded. The base district of a vessel is the district of residence of the skipper or the majority of owners.

Disposal of Fish (Table 33)

Disposal information is obtained by officers of the Sea Fisheries Inspectorate from information supplied by buyers at the point of sale. The term klondyking refers to direct landings to foreign container or factory vessels for immediate export.

Fish Processing (Tables 34, 35 and 36)

This data is obtained from fish processing plants in each fishery district, by interview or by questionnaire.

Fishermen employed (Tables 31, 32)

Estimates of numbers of fishermen regularly and partially employed are made at 31 December each year by the Fisheries Officers in each Sea Fisheries District.

Symbols used in tables

The following symbols are used in the tables:
+ = less than half final digit
. . = not available
- = nil

Rounding

In some tables, where figures have been rounded, the sum of the constituent items may not always agree exactly with the total shown.

Fishing Regions

The International Council for the Exploration of the Sea (ICES) fishing areas (Divisions) are defined on the map before table 13.

Other Departmental Publications on Scottish Sea Fisheries

The Scottish Fishing Fleet: annual publication lists details of each vessel in the Scottish fleet and contains summary statistical tables about the fleet over the last 10 years. Price £6.

Costs and Earnings Survey: occasional publication, last published for 1983; contains results of the Department's survey into fishermen's costs and earnings over 7 years. Price £2.

These publications are available from the Scottish Office Library, Room 2/65 New St. Andrew's House, Edinburgh. Cheques should be made payable to the Scottish Office and submitted with orders.

DESCRIPTION OF FISHING METHODS REFERRED TO IN THE TABLES

Motor Trawl. The gear consists of a net in the shape of a funnel attached to the vessel by wire ropes or "warps". As the net is towed over the sea floor the mouth is kept open by a combination of boards, floats and weights. The tail end of the net where the fish are trapped is known as the "cod-end". The length of the warps is normally about 3.5-4 times the depth of the water and can extend in depths of 110m to about 450m from the stern of the vessel. This method is used by the deep sea trawlers operating mainly out of Aberdeen. Other single-vessel trawling methods ("Industrial Trawl", "Light Trawl" and "Nephrop Trawl") follow the same principles. Light Trawl and Nephrop Trawl are used by "Inshore" vessels in the 10m-25m group, many of which are multi-purpose and may also use seine nets (see below).

Two-Boat Trawl ("Pair Trawl": "Mid-Water Trawl"). A variant of trawling used to fish at intermediate depths between the surface and the sea floor. The net is towed by two vessels which may be up to 400m apart, the depth of the net being mainly controlled by the length of the warps and the vessels' speed, used by vessels in the inshore fleet for catching both demersal and pelagic species.

Seine Net. Another bottom fishing method. The gear consists of a sac of netting with wings on either side, kept in position vertically by floats and weights. Long warps are attached to the net, one of which is initially fastened to a flag pole passed through a buoy ("dahn buoy"). The vessel steams forward paying out warp, then the net itself, then more warp to form a rough triangle back to the dahn, which may be some 1-3kms distant from the net. The vessel then steams ahead, causing the warps to herd the fish into the path of the net, which is finally winched aboard.

Purse Seine. This method involves complete encirclement of a shoal or area known to contain fish. As the name implies the net, which may be up to 1200m long and 240m deep, is shaped like a purse. One end is first attached to a buoy, and the vessel then steams round the shoal paying out the net as it goes. On return to the buoy the net is closed at the foot or "pursed". The net is then winched to the side of the vessel and the fish taken on board by means of a fish pump. This gear requires relatively heavy equipment and is not generally suitable for vessels below 20m; used to catch pelagic species mainly herring, mackerel and sprats. Ring nets are similar except that the net is much smaller and operated by two vessels. This last method is now uncommon, but still used by a few relatively small vessels on the West Coast of Scotland.

Beam Trawl. The beam trawl is a bottom fishing trawl net, used mainly for catching flatfish with the headrope attached to a beam towed along the bottom on runners at either end. The net is heavily weighted with chain on the underside and has trickler chains running in front when fishing.

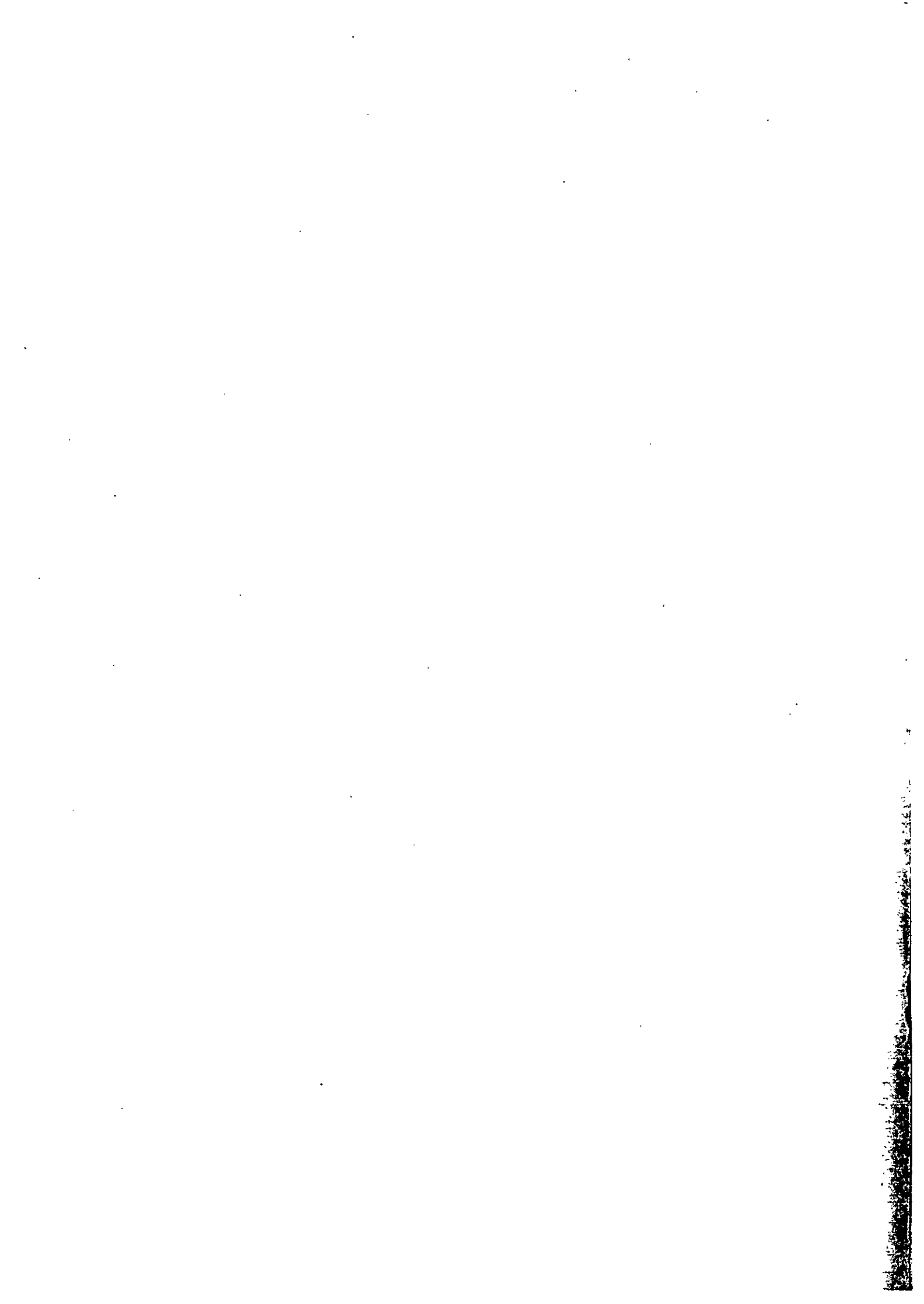
Gill Nets. Sheets of netting each about 35m long and totalling up to 1500m or more are paid out to form a curtain of barrier in the path of on-coming fish. The net is kept vertical by floats on the headrope and a heavy footrope, the fish being caught in the mesh by their gills. For white fish the nets are anchored near to the sea floor from which they are made to stand upright (by means of floats) like a fence.

Great Lines. These are lines of thin rope totalling up to 15,000m long with hooks attached at intervals. The hooks are baited and the lines then laid along the sea floor, their position being marked by floats at each end. This method is especially suitable for rocky and uneven grounds where other methods may be impracticable. Used by vessels in the 25m-30m groups, which may be away for up to 3 weeks or more on each trip. There are now few vessels using this method in the Scottish fleet.

Small Lines. Work on the same principle, but the vessels are smaller and usually return to port every day.

Creels. These are traps or "pots" used to catch shellfish, especially lobsters, nephrops and crabs. The pots vary in size and are generally made from a combination of wood, cane and netting. They are normally arranged on the sea floor in lots between 10 and 50, depending on the capacity of the vessel fishing, and are checked (weather permitting) daily.

Dredge. Used to catch scallops and queen scallops. The apparatus consists of a steel-framed "mouth" attached to a bag of light metal link chain. As the dredge is towed along the sea floor metal teeth attached to the underside of the "mouth" rake the shellfish into the bag. The number of dredges may vary between one and six depending on the power and size of the vessel, which may be up to 20m.



FISH LANDINGS IN UNITED KINGDOM

TABLE 1

COUNTRY OF LANDING: WEIGHT AND VALUE BY SPECIES GROUPS

	Weight (Thou Tonnes)					Value (£ million)				
	1983	1984	1985	1986	1987	1983	1984	1985	1986	1987
(a) UK Vessels										
(i) Scotland										
Demersal	292.8	282.7	294.7	281.8	263.8	121.1	136.0	147.2	163.1	186.5
Pelagic	173.6	226.0	263.1	234.7	272.2	19.9	24.4	29.0	25.4	31.0
Shellfish	32.7	34.5	34.7	34.8	38.9	29.2	33.5	39.0	46.0	56.1
All Species	499.1	543.3	592.6	551.3	574.9	170.2	193.9	215.1	234.5	273.6
(ii) England and Wales										
Demersal	124.0	101.1	93.5	86.7	101.5	77.0	71.8	74.7	87.0	109.3
Pelagic	72.2	37.1	17.9	11.8	25.9	6.8	4.1	2.2	1.8	3.6
Shellfish	34.2	33.6	35.4	47.4	66.4	18.0	20.4	21.5	25.8	33.4
All Species	230.5	171.8	146.9	145.9	193.8	101.8	96.3	98.5	114.6	146.3
(iii) Northern Ireland										
Demersal	10.6	11.2	14.0	12.0	12.3	4.0	3.9	5.3	6.8	8.2
Pelagic	2.9	2.9	2.7	3.6	3.2	0.4	0.4	0.4	0.4	0.4
Shellfish	5.3	4.5	4.7	5.6	5.7	4.0	3.4	4.4	6.1	6.4
All Species	18.8	18.5	21.3	21.2	21.3	8.5	7.6	10.1	13.3	15.0
(iv) United Kingdom										
Demersal	427.5	395.0	402.3	380.5	377.5	202.1	211.7	227.2	256.9	304.0
Pelagic	248.7	266.0	283.7	250.2	301.3	27.1	28.9	31.6	27.6	35.0
Shellfish	72.2	72.6	74.8	87.8	111.1	51.2	57.3	64.9	77.9	95.9
All Species	748.4	733.7	760.7	718.5	789.9	280.5	297.9	323.6	362.4	434.9
(b) Foreign Vessels										
(v) United Kingdom										
Demersal	47.6	43.0	36.3	27.8	26.8	25.0	23.9	27.0	23.8	25.5
Pelagic	27.6	15.0	15.0	24.5	6.4	3.1	2.0	1.0	1.6	0.3
Shellfish	0.5	0.1	1.5	1.0	1.6	0.4	0.1	1.4	1.0	2.1
All Species	75.7	58.1	52.8	53.3	34.9	28.4	26.0	29.5	26.4	27.9
(c) UK and Foreign Vessels										
(vi) United Kingdom										
Demersal	475.2	438.0	438.6	408.2	404.4	227.1	235.6	254.2	280.7	329.5
Pelagic	276.3	281.0	298.7	274.7	307.8	30.2	30.9	32.6	29.2	35.3
Shellfish	72.6	72.7	76.3	88.8	112.7	51.6	57.3	66.3	79.0	98.0
All Species	824.1	791.8	813.5	771.7	824.8	308.9	323.9	353.2	388.8	462.9
(d) Landings in Scotland as % of UK Total by UK Vessels										
Demersal	68.5	71.6	73.3	74.1	69.9	59.9	64.2	64.8	63.5	61.3
Pelagic	69.8	85.0	92.8	93.8	90.3	73.4	84.7	91.8	92.0	88.7
Shellfish	45.3	47.6	46.4	39.6	35.1	57.0	58.5	60.0	59.1	58.4
All Species	66.7	74.1	77.9	76.7	72.8	60.7	65.1	66.5	64.7	62.9

Landings into England and Wales: 1987 figures are provisional

COUNTRY OF LANDING: WEIGHT AND VALUE BY MAJOR INDIVIDUAL SPECIES

	Weight (Thou Tonnes)					Value (£ million)				
	1983	1984	1985	1986	1987	1983	1984	1985	1986	1987
(a) UK Vessels										
(i) Scotland										
Cod	56.40	53.93	58.62	44.48	54.25	37.81	38.15	43.92	39.98	49.38
Haddock	108.53	95.74	119.08	122.90	94.01	50.93	57.45	60.78	73.45	71.61
Hake	1.33	1.49	1.54	1.44	1.66	1.36	1.39	2.00	1.99	2.14
Monks	2.83	4.13	4.98	4.81	6.56	2.68	4.17	5.88	7.75	12.04
Plaice	4.85	5.05	5.43	5.64	6.67	2.99	3.04	3.26	3.71	5.21
Saithe	7.56	9.14	12.16	15.85	13.20	2.12	2.03	3.22	5.62	6.07
Sandeels	50.06	46.75	35.81	36.43	21.70	1.54	1.59	1.11	1.04	0.64
Whiting	45.49	48.48	35.39	31.04	40.53	14.59	19.60	14.92	14.68	20.34
Herring	51.39	67.83	86.86	100.75	96.30	6.49	8.52	10.53	11.21	11.52
Mackerel	120.02	155.01	170.91	128.94	170.35	13.22	15.59	18.04	13.92	19.25
Norway Lobsters	14.19	16.08	17.89	17.51	16.54	16.83	19.05	24.28	29.46	32.64
(ii) England and Wales										
Cod	53.29	34.73	29.28	29.95	35.17	33.12	25.75	24.29	26.69	33.26
Haddock	14.10	11.70	12.98	7.85	7.87	6.42	6.74	6.87	5.29	6.30
Hake	0.66	0.80	0.96	1.15	1.14	0.81	1.18	1.60	2.06	2.69
Monks	4.66	4.73	3.67	2.71	3.33	3.71	4.26	4.28	4.45	6.02
Plaice	16.03	16.26	14.83	15.48	18.84	10.72	10.98	10.47	12.21	17.14
Saithe	4.65	2.53	1.68	1.27	1.57	1.27	0.64	0.50	0.57	0.78
Sandeels	-	-	-	-	+	-	-	-	-	+
Whiting	6.28	6.56	6.44	5.10	6.48	1.73	2.02	2.03	1.98	2.90
Herring	0.82	1.88	5.75	1.77	1.39	0.20	0.29	0.56	0.28	0.37
Mackerel	54.52	30.20	2.18	3.15	18.44	5.31	3.07	0.50	0.85	2.17
Norway Lobsters	2.92	2.12	2.58	2.70	2.65	3.40	2.40	3.18	4.14	4.69
(iii) Northern Ireland										
Cod	2.92	2.22	2.14	3.03	3.70	1.54	1.36	1.73	2.64	3.47
Haddock	0.02	0.03	0.18	0.36	0.23	0.01	0.01	0.11	0.31	0.16
Hake	0.31	0.17	0.17	0.43	0.54	0.36	0.22	0.25	0.53	0.71
Monks	0.36	0.33	0.24	0.26	0.25	0.18	0.20	0.20	0.24	0.28
Plaice	0.17	0.19	0.19	0.27	0.34	0.06	0.07	0.09	0.14	0.18
Saithe	0.56	0.40	0.61	0.65	0.60	0.13	0.09	0.15	0.18	0.23
Sandeels	-	-	-	-	-	-	-	-	-	-
Whiting	5.26	5.66	8.37	4.93	4.86	1.39	1.39	2.04	1.80	1.96
Herring	1.99	1.78	2.62	3.60	2.65	0.30	0.26	0.38	0.40	0.33
Mackerel	0.94	1.12	0.02	0.01	0.55	0.12	0.11	+	+	0.07
Norway Lobsters	4.95	4.03	4.32	5.18	5.04	3.83	3.10	4.10	5.52	5.68
(iv) United Kingdom										
Cod	112.60	90.87	90.05	77.46	93.11	72.47	65.26	69.95	69.31	86.11
Haddock	122.65	107.48	132.24	131.11	102.10	57.36	64.20	67.76	79.05	78.07
Hake	2.29	2.46	2.68	3.02	3.34	2.52	2.79	3.85	4.57	5.54
Monks	7.85	9.18	8.89	7.78	10.14	6.57	8.63	10.37	12.45	18.34
Plaice	21.05	21.49	20.45	21.39	25.85	13.77	14.10	13.82	16.05	22.54
Saithe	12.77	12.07	14.44	17.77	15.36	3.52	2.76	3.87	6.36	7.08
Sandeels	50.06	46.75	35.81	36.43	21.71	1.54	1.59	1.11	1.04	0.64
Whiting	57.03	60.70	50.20	41.07	51.87	17.72	23.01	19.00	18.46	25.20
Herring	54.19	71.48	95.23	106.12	100.35	6.99	9.08	11.47	11.88	12.21
Mackerel	175.48	186.33	173.11	132.10	189.35	18.65	18.77	18.55	14.77	21.49
Norway Lobsters	22.06	22.23	24.79	25.38	24.23	24.06	24.55	31.55	39.12	43.01
(b) Foreign Vessels in United Kingdom										
Cod	23.36	22.94	22.40	17.86	14.94	13.86	14.64	17.47	16.18	14.24
Haddock	4.34	2.27	2.88	2.57	2.93	2.45	1.61	2.32	2.25	2.86
Hake	+	0.04	0.03	0.03	0.05	+	0.04	0.03	0.05	0.10
Monks	0.21	0.37	0.28	0.17	0.26	0.20	0.32	0.31	0.26	0.45
Plaice	5.02	4.57	3.35	1.25	1.42	3.56	3.31	2.44	0.93	1.30
Saithe	5.65	2.72	3.05	2.24	1.80	1.78	0.84	1.25	0.90	0.86
Sandeels	2.39	1.28	-	0.02	-	0.10	0.06	-	+	-
Whiting	0.06	0.13	0.08	0.12	0.28	0.02	0.05	0.03	0.05	0.15
Herring	0.04	1.24	2.42	9.70	0.42	0.02	0.20	0.24	0.93	0.03
Mackerel	26.26	13.40	5.23	2.98	0.85	2.90	1.82	0.44	0.18	0.13
Norway Lobsters	0.05	0.03	0.07	0.22	0.20	0.05	0.03	0.11	0.27	0.35
(c) UK and Foreign Vessels in United Kingdom										
Cod	135.96	113.82	112.45	95.32	108.05	86.33	79.90	87.41	85.49	100.35
Haddock	126.99	109.74	135.11	133.68	105.03	59.81	65.81	70.08	81.30	80.93
Hake	2.30	2.49	2.71	3.05	3.39	2.52	2.84	3.88	4.62	5.64
Monks	8.06	9.55	9.17	7.95	10.40	6.77	8.94	10.67	12.71	18.80
Plaice	26.07	26.06	23.80	22.63	27.27	17.33	17.41	16.26	16.98	23.84
Saithe	18.42	14.79	17.49	20.01	17.15	5.30	3.60	5.13	7.26	7.94
Sandeels	52.46	48.02	35.81	36.45	21.71	1.64	1.65	1.11	1.04	0.64
Whiting	57.09	60.83	50.28	41.19	52.15	17.73	23.06	19.03	18.51	25.35
Herring	54.24	72.72	97.65	115.82	100.77	7.01	9.28	11.71	12.81	12.24
Mackerel	201.73	199.72	178.34	135.08	190.20	21.54	20.59	18.99	14.95	21.61
Norway Lobsters	22.11	22.25	24.86	25.61	24.42	24.11	24.57	31.66	39.39	43.36

Landings into England and Wales: 1987 figures are provisional

WEIGHT OF EACH SPECIES LANDED

TONNES

	1980	1981	1982	1983	1984	1985	1986	1987
DEMERSAL FISH								
Blue ling	2	1	1	2	+	-	5	17
Brill	16	11	10	11	15	23	20	26
Catfish	494	479	601	880	834	1,028	1,064	1,064
Cod	44,846	54,067	54,898	56,397	53,926	58,624	44,478	54,250
Conger eels	73	90	79	94	141	135	130	150
Dabs	615	600	853	888	754	885	941	1,263
Dogfish	4,440	3,528	3,248	3,883	4,408	5,998	4,573	5,870
Dover sole	71	50	53	33	23	34	58	79
Flounders	28	11	16	10	17	16	11	28
Greenland halibut	-	-	-	-	-	-	2	21
Gurnards	30	14	13	24	49	49	38	80
Haddock	65,581	84,381	112,571	108,530	95,739	119,075	122,899	94,005
Hake	1,487	2,712	1,652	1,325	1,491	1,544	1,440	1,663
Halibut	151	85	119	113	98	92	85	114
Lemon sole	2,365	2,004	1,931	2,551	2,438	2,262	2,120	2,445
Ling	1,546	1,723	1,324	1,493	1,813	2,752	2,154	2,929
Lythe	359	361	266	326	370	579	474	463
Megrims	949	1,011	653	711	1,620	2,036	1,515	2,572
Monks	3,673	2,675	2,441	2,828	4,125	4,978	4,808	6,563
Norway pout	1,804	1,158	586	+	112	64	-	554
Plaice	5,224	5,207	5,030	4,853	5,047	5,428	5,635	6,673
Roundnose grenadier	+	+	+	+	+	1	1	+
Redfish	+	+	+	1	2	1	25	81
Saithe	7,934	8,124	8,664	7,561	9,135	12,155	15,848	13,195
Sandeels	32,144	52,640	62,907	50,064	46,745	35,809	36,429	21,704
Skate	2,924	2,606	2,645	2,983	3,354	3,504	3,530	4,494
Tusk	501	251	192	89	7	23	39	71
Turbot	117	136	106	125	134	161	135	170
Whiting	44,436	35,559	34,018	45,485	48,482	35,386	31,041	40,525
Witches	997	890	1,002	1,260	1,587	1,789	1,976	2,271
Livers	+	1	+	+	+	3	2	12
Roes	372	357	352	311	260	283	231	257
Other demersal	12	13	13	17	23	24	75	146
TOTAL	223,191	260,744	296,244	292,847	282,749	294,739	281,785	263,752
PELAGIC FISH								
Herring	2,237	32,596	41,581	51,385	67,827	86,862	100,746	96,302
Horse mackerel	1	17	83	38	703	2,381	428	1,467
Mackerel	101,292	114,632	129,998	120,015	155,008	170,910	128,939	170,354
Blue whiting	6,823	2,451	-	-	-	+	4,028	3,310
Sprats	10,248	3,236	1,254	2,122	2,479	2,946	566	735
Other pelagic	-	-	-	-	2	-	-	-
TOTAL	120,601	152,932	172,916	173,560	226,020	263,099	234,707	272,169
WET FISH	343,792	413,676	469,160	466,407	508,769	557,838	516,492	535,921
SHELL FISH								
Brown shrimps	31	25	27	11	13	14	19	28
Whelks	26	9	1	2	-	-	89	581
Periwinkles	2,725	2,710	2,337	2,403	2,284	2,035	1,910	2,058
Edible crabs	2,530	2,637	3,161	4,004	4,622	4,236	3,813	5,207
Lobsters	428	453	383	506	629	619	550	604
Oysters	-	-	+	+	-	-	1	-
Pink shrimps	407	341	354	1,836	25	1,347	358	774
Crawfish	3	4	5	41	30	20	12	13
Cockles	+	10	+	1	+	29	-	237
Scallops	5,320	5,521	6,532	5,090	6,000	4,220	3,970	4,758
Mussels	526	146	50	33	23	312	1,333	384
Norway lobsters	10,440	12,561	12,084	14,188	16,077	17,887	17,505	16,536
Squids	104	217	389	155	341	255	1,072	712
Queen scallops	5,020	5,684	3,699	4,433	4,167	3,315	3,415	5,396
Velvet crabs	330	430	695	1,327
Squat lobsters	+	-	2	1
Other shellfish	3	2	5	11	2	12	55	325
TOTAL	27,563	30,320	29,027	32,713	34,543	34,732	34,798	38,941
TOTAL OF ALL FISH	371,355	443,996	498,187	499,121	543,312	592,570	551,290	574,862

FISH LANDINGS IN SCOTLAND BY UNITED KINGDOM VESSELS

TABLE 4

VALUE OF EACH SPECIES LANDED

£'000

	1980	1981	1982	1983	1984	1985	1986	1987
DEMERSAL FISH								
Blue ling	1	+	+	1	+	-	2	10
Brill	17	12	11	13	19	33	35	55
Catfish	168	172	222	319	383	550	767	938
Cod	26,837	30,007	35,494	37,813	38,153	43,921	39,981	49,376
Conger eels	17	24	25	29	42	37	52	56
Dabs	166	183	254	245	246	289	356	512
Dogfish	935	793	711	755	946	1,506	2,675	3,220
Dover sole	152	98	100	66	48	85	187	278
Flounders	3	1	2	2	3	2	3	14
Greenland halibut	-	-	-	-	-	-	2	14
Gurnards	7	4	4	6	13	11	11	21
Haddock	27,042	32,048	43,403	50,930	57,451	60,776	73,449	71,613
Hake	1,215	3,039	2,042	1,357	1,389	1,998	1,985	2,143
Halibut	344	216	319	294	265	313	319	399
Lemon sole	1,953	2,068	2,035	2,213	2,369	2,724	3,165	3,623
Ling	546	625	555	592	649	1,250	1,241	1,888
Lythe	152	143	132	155	199	352	317	340
Megrims	319	420	256	270	925	1,692	1,513	2,404
Monks	2,681	2,096	2,033	2,676	4,167	5,883	7,753	12,042
Norway pout	55	37	19	+	5	2	-	18
Plaice	2,437	2,471	2,734	2,992	3,043	3,260	3,708	5,213
Roundnose grenadier	+	+	+	+	+	+	+	1
Redfish	+	+	+	+	1	+	7	10
Saithe	2,553	2,185	2,454	2,116	2,032	3,221	5,621	6,068
Sandeels	955	1,534	1,868	1,536	1,590	1,107	1,037	641
Skate	1,037	1,003	954	1,070	1,144	1,217	1,719	2,065
Tusk	180	82	66	30	2	8	16	36
Turbot	255	276	256	342	389	550	596	776
Whiting	13,706	10,843	9,866	14,593	19,598	14,920	14,683	20,340
Witches	277	287	385	476	718	1,170	1,627	2,029
Livers	1	1	1	1	1	1	1	9
Roes	251	218	234	196	193	255	176	230
Other demersal	6	6	10	13	16	17	47	90
TOTAL	84,267	90,892	106,444	121,102	135,997	147,153	163,050	186,472
PELAGIC FISH								
Herring	932	4,239	5,083	6,492	8,523	10,527	11,206	11,517
Horse mackerel	+	4	4	2	35	105	40	84
Mackerel	8,027	10,970	13,321	13,224	15,593	18,042	13,919	19,248
Blue whiting	191	69	-	-	-	+	124	101
Sprats	812	230	101	210	292	300	82	86
Other pelagic	-	-	-	-	3	-	-	-
TOTAL	9,963	15,512	18,510	19,928	24,445	28,974	25,370	31,036
WET FISH	94,230	106,404	124,953	141,030	160,442	176,126	188,420	217,507
SHELL FISH								
Brown shrimps	35	37	40	14	23	27	32	44
Whelks	4	1	+	1	-	-	23	157
Periwinkles	718	739	680	770	779	745	697	840
Edible crabs	579	747	1,014	1,583	1,756	1,654	1,735	2,934
Lobsters	1,872	2,093	2,078	2,916	3,954	4,456	4,141	5,076
Oysters	-	-	+	+	-	-	1	-
Pink shrimps	386	295	286	1,759	19	1,234	330	909
Crawfish	15	21	24	202	172	134	92	106
Cockles	+	1	+	+	+	6	-	67
Scallops	3,288	3,253	4,171	3,763	5,541	4,526	5,452	7,247
Mussels	32	18	8	7	5	25	148	54
Norway lobsters	11,196	12,425	14,236	16,832	19,045	24,275	29,458	32,643
Squids	114	160	379	196	645	383	1,645	1,212
Queen scallops	1,123	1,293	828	1,133	1,182	971	1,228	2,429
Velvet crabs	352	535	1,027	2,209
Squat lobsters	+	-	1	1
Other shellfish	6	1	9	7	5	4	20	141
TOTAL	19,368	21,084	23,754	29,183	33,477	38,976	46,030	56,067
TOTAL OF ALL FISH	113,598	127,488	148,707	170,213	193,920	215,103	234,450	273,575

FISH LANDINGS IN SCOTLAND BY UNITED KINGDOM VESSELS

TABLE 5

AVERAGE VALUE OF EACH SPECIES LANDED

£/TONNE

	1980	1981	1982	1983	1984	1985	1986	1987
DEMERSAL FISH								
Blue ling	275.8	278.3	301.4	377.9	400.0	—	464.0	598.3
Brill	1,063.3	1,047.1	1,074.8	1,217.3	1,276.7	1,458.3	1,742.6	2,130.2
Catfish	339.3	359.8	369.3	362.8	458.5	534.6	720.8	881.8
Cod	598.4	554.9	646.5	670.5	707.5	749.2	898.9	910.2
Conger eels	233.2	272.5	315.3	312.4	298.2	271.3	402.3	375.5
Dabs	269.7	305.4	297.7	276.2	326.2	327.2	378.8	405.2
Dogfish	210.6	224.9	219.0	194.5	214.7	251.1	585.0	548.7
Dover sole	2,145.1	1,981.2	1,904.3	1,974.6	2,108.0	2,510.7	3,238.2	3,501.0
Flounders	113.7	100.9	145.5	159.6	165.1	143.7	253.5	498.9
Greenland halibut	—	—	—	—	—	—	674.3	676.7
Gurnards	222.2	276.1	290.7	257.2	253.5	234.1	288.5	265.9
Haddock	412.3	379.8	385.6	469.3	600.1	510.4	597.6	761.8
Hake	817.1	1,120.7	1,235.9	1,024.3	931.4	1,294.6	1,378.3	1,288.3
Halibut	2,280.6	2,539.9	2,677.0	2,600.1	2,710.8	3,384.0	3,748.2	3,504.0
Lemon sole	825.9	1,031.7	1,053.8	867.6	971.8	1,204.1	1,492.6	1,481.9
Ling	353.1	362.5	418.9	396.5	358.3	454.2	576.1	644.5
Lythe	424.1	396.9	495.8	475.3	537.2	607.4	668.3	733.9
Megrim	335.9	415.2	392.1	380.1	571.3	831.1	998.4	935.0
Monks	730.0	783.5	832.9	946.2	1,010.3	1,181.7	1,612.6	1,834.9
Norway pout	30.4	32.0	32.2	410.0	45.9	29.3	—	32.5
Plaice	466.5	474.6	543.7	616.5	603.0	600.7	658.0	781.3
Roundnose grenadier	1,000.0	305.0	300.0	344.4	500.0	371.7	580.0	4,256.7
Redfish	270.0	—	200.0	497.5	420.0	488.3	280.7	126.5
Saithe	321.7	269.0	283.2	279.9	222.4	265.0	354.7	459.9
Sandeels	29.7	29.1	29.7	30.7	34.0	30.9	28.5	29.5
Skate	354.6	385.0	360.6	358.8	341.1	347.4	487.1	459.5
Tusk	358.3	324.8	345.3	335.8	313.0	366.8	396.0	510.5
Turbot	2,171.2	2,036.7	2,412.4	2,735.1	2,898.9	3,420.3	4,411.9	4,567.7
Whiting	308.4	304.9	290.0	320.8	404.2	421.6	473.0	501.9
Witches	278.1	322.1	384.5	377.8	452.4	654.2	823.6	893.3
Livers	210.0	61.7	415.0	326.7	207.5	388.0	713.9	761.6
Roes	675.6	609.7	666.2	631.1	741.4	899.6	762.6	893.3
Other demersal	516.5	467.0	818.7	773.9	665.0	732.6	622.5	615.5
TOTAL	377.6	348.6	359.3	413.5	481.0	499.3	578.6	707.0
PELAGIC FISH								
Herring	416.5	130.1	122.3	126.3	125.7	121.2	111.2	119.6
Horse mackerel	191.3	224.7	44.5	58.2	49.5	44.2	92.8	57.2
Mackerel	79.2	95.7	102.5	110.2	100.6	105.6	107.9	113.0
Blue whiting	28.0	28.0	—	—	—	285.0	30.8	30.6
Sprats	79.3	71.2	80.9	98.9	117.6	101.8	144.7	116.4
Other pelagic	—	—	—	—	1,421.8	—	—	—
TOTAL	82.6	101.4	107.0	114.8	108.2	110.1	108.1	114.0
WET FISH	274.1	257.2	266.3	302.4	315.4	315.7	364.8	405.9
SHELL FISH								
Brown shrimps	1,103.3	1,482.7	1,493.8	1,327.6	1,810.8	1,923.0	1,724.2	1,570.7
Whelks	159.6	125.7	205.0	306.8	—	—	259.9	270.3
Periwinkles	263.6	272.7	291.2	320.3	341.0	366.3	364.9	408.0
Edible crabs	229.0	283.4	320.9	395.5	379.9	390.5	455.0	563.5
Lobsters	4,376.4	4,616.5	5,424.6	5,760.4	6,281.6	7,197.0	7,526.0	8,407.3
Oysters	—	—	1,400.0	1,250.0	—	—	2,562.0	—
Pink shrimps	948.7	865.1	807.7	957.9	775.4	916.5	921.2	1,173.8
Crawfish	4,950.0	5,580.8	5,323.7	4,908.4	5,819.2	6,711.7	7,974.1	7,879.1
Cockles	1,175.0	97.3	160.0	512.5	500.0	217.7	—	285.0
Scallops	618.1	589.2	638.5	739.4	923.5	1,072.4	1,373.3	1,523.1
Mussels	60.1	124.2	158.6	199.9	202.2	81.0	110.7	140.9
Norway lobsters	1,072.3	989.2	1,178.1	1,186.4	1,184.6	1,357.1	1,682.8	1,974.1
Squids	1,090.4	734.7	975.2	1,266.8	1,893.1	1,500.0	1,535.4	1,701.2
Queen scallops	223.7	227.5	223.9	255.6	283.6	293.0	359.5	450.1
Velvet crabs	—	—	—	—	1,068.3	1,244.7	1,478.4	1,664.9
Squat lobsters	—	—	—	—	2,050.0	—	791.1	885.0
Other shellfish	2,315.4	640.0	1,900.2	622.4	2,091.7	323.4	358.6	434.4
TOTAL	702.7	695.4	818.4	892.1	969.1	1,122.2	1,322.8	1,439.8
TOTAL OF ALL FISH	305.9	287.1	298.5	341.0	356.9	363.0	425.3	475.9

FISH LANDINGS IN SCOTLAND BY UNITED KINGDOM VESSELS

TABLE 6

DISTRICT OF SCOTLAND: WEIGHT AND VALUE OF EACH SPECIES

ALL DISTRICTS			EAST COAST					
			Eyemouth		Pittenweem		Arbroath	
	m.t.	£'000	m.t.	£'000	m.t.	£'000	m.t.	£'000
DEMERSAL FISH								
Blue ling	17	10.0	+	+	-	-	-	-
Brill	26	55.0	+	+	+	+	+	+
Catfish	1,064	938.0	25	16.5	4	3.6	8	7.1
Cod	54,250	49,376.3	2,100	1,909.3	748	632.0	1,141	922.8
Conger eels	150	56.4	-	-	+	+	+	+
Dabs	1,263	511.8	47	20.8	34	13.5	254	89.8
Dogfish	5,870	3,220.4	39	23.8	11	3.8	17	5.8
Dover sole	79	277.6	+	0.4	+	0.2	-	-
Flounders	28	13.9	-	-	+	+	-	-
Greenland halibut	21	14.0	-	-	-	-	-	-
Gurnards	80	21.2	+	+	+	+	+	+
Haddock	94,005	71,613.1	3,083	2,670.0	1,548	1,280.5	1,262	1,014.6
Hake	1,663	2,142.9	1	1.2	+	0.1	-	-
Halibut	114	398.8	1	3.7	1	1.2	+	0.4
Lemon sole	2,445	3,622.8	195	266.9	47	66.4	138	176.1
Ling	2,929	1,887.5	3	2.2	5	3.1	1	0.3
Lythe	463	339.7	1	0.6	+	0.3	-	-
Megrimms	2,572	2,404.2	-	-	+	0.2	-	-
Monks	6,563	12,042.1	66	92.7	18	18.8	15	22.6
Norway pout	554	18.0	-	-	-	-	-	-
Plaice	6,673	5,213.0	233	178.0	75	44.0	288	168.3
Roundnose grenadier	+	1.3	-	-	-	-	-	-
Redfish	81	10.2	-	-	-	-	-	-
Saithe	13,195	6,068.2	17	6.7	20	6.1	20	7.2
Sandeels	21,704	640.9	-	-	-	-	-	-
Skate	4,494	2,064.9	1	0.5	3	1.6	92	34.3
Tusk	71	36.3	+	0.4	+	+	-	-
Turbot	170	775.6	6	17.2	1	2.3	2	7.0
Whiting	40,525	20,340.2	838	537.9	273	170.4	200	100.2
Witches	2,271	2,028.7	29	18.7	3	1.7	+	0.1
Livers	12	9.1	-	-	-	-	-	-
Roes	257	229.5	9	7.4	1	0.7	2	2.2
Other demersal	146	90.0	1	1.2	+	0.3	1	0.8
TOTAL	263,752	186,471.8	6,694	5,776.3	2,791	2,251.0	3,443	2,559.7
PELAGIC FISH								
Herring	96,302	11,516.5	3	0.8	2	1.1	-	-
Horse mackerel	1,467	83.9	-	-	1	+	-	-
Mackerel	170,354	19,248.2	7	1.4	65	10.3	42	5.5
Blue whiting	3,310	101.4	-	-	-	-	-	-
Sprats	735	85.6	-	-	-	-	148	30.3
Other pelagic	-	-	-	-	-	-	-	-
TOTAL	272,169	31,035.6	10	2.3	68	11.5	190	35.8
WET FISH	535,921	217,507.4	6,704	5,778.6	2,860	2,262.4	3,633	2,595.5
SHELL FISH								
Brown shrimps	28	43.5	-	-	-	-	-	-
Whelks	581	157.1	-	-	-	-	-	-
Periwinkles	2,058	839.5	364	128.1	133	45.3	-	-
Edible crabs	5,207	2,934.1	384	193.2	261	131.0	145	72.1
Lobsters	604	5,075.5	65	497.3	43	318.4	34	274.5
Oysters	-	-	-	-	-	-	-	-
Pink shrimps	774	909.0	86	66.9	+	+	-	-
Crawfish	13	105.6	-	-	-	-	-	-
Cockles	237	67.4	-	-	-	-	-	-
Scallops	4,758	7,246.9	-	-	1	5.5	-	-
Mussels	384	54.1	-	-	+	+	27	4.6
Norway lobsters	16,536	32,643.3	907	1,634.3	746	1,091.9	187	302.8
Squids	712	1,211.9	-	-	2	1.5	5	8.5
Queen scallops	5,396	2,428.9	1	0.3	-	-	-	-
Velvet crabs	1,327	2,208.7	-	-	-	-	-	-
Squat lobsters	1	0.5	-	-	-	-	-	-
Other shellfish	325	141.1	-	-	-	-	-	-
TOTAL	38,941	56,067.3	1,806	2,520.0	1,185	1,593.7	398	662.6
TOTAL OF ALL FISH	574,862	273,574.7	8,510	8,298.6	4,044	3,856.1	4,031	3,258.1

TABLE 6—continued

EAST COAST						
Aberdeen		Peterhead		Fraserburgh		
m.t.	£'000	m.t.	£'000	m.t.	£'000	DEMERSAL FISH
12	7.6	—	—	—	—	Blue ling
1	2.6	+	0.3	+	0.5	Brill
216	186.9	678	628.3	63	45.7	Catfish
10,100	9,255.3	24,300	22,437.7	2,301	2,093.0	Cod
2	0.7	1	5.4	5	3.7	Conger eels
165	72.3	151	57.0	64	28.4	Dabs
301	149.1	1,111	540.7	455	200.0	Dogfish
3	8.1	+	0.1	—	—	Dover sole
+	+	19	12.3	—	—	Flounders
21	14.0	—	—	—	—	Greenland halibut
14	3.8	7	1.7	+	+	Gurnards
16,049	12,770.2	37,263	29,240.6	3,454	2,355.7	Haddock
68	80.4	180	219.4	14	16.2	Hake
22	93.1	41	131.2	3	8.0	Halibut
519	964.0	847	1,289.1	227	339.0	Lemon sole
395	270.2	1,277	882.4	134	84.2	Ling
35	26.1	140	107.8	3	2.3	Lythe
284	224.4	517	514.4	78	77.5	Megrim
681	1,351.9	2,018	3,872.1	737	1,450.1	Monks
—	—	1	1.0	—	—	Norway pout
1,688	1,619.4	1,555	1,117.8	284	225.0	Plaice
—	—	+	1.2	—	—	Roundnose grenadier
11	3.9	+	+	—	—	Redfish
3,443	1,717.5	5,875	2,772.0	293	117.4	Saithe
—	—	+	2.2	—	—	Sandeels
511	233.4	451	177.3	116	43.2	Skate
17	7.9	28	14.5	2	0.5	Tusk
47	278.9	44	186.4	9	44.5	Turbot
4,464	2,579.5	17,959	8,840.3	2,443	1,018.3	Whiting
180	203.6	913	923.2	228	239.7	Witches
—	—	4	1.7	8	7.4	Livers
73	69.0	66	51.2	8	11.0	Roes
14	6.5	36	15.0	+	0.1	Other demersal
39,336	32,200.1	95,478	74,044.1	10,929	8,411.3	TOTAL
7,102	1,069.9	20,119	2,273.0	9,284	917.1	PELAGIC FISH
+	+	67	5.4	40	2.0	Herring
7,231	911.2	540	82.7	17,522	1,987.1	Horse mackerel
—	—	+	+	—	—	Mackerel
—	—	—	—	—	—	Blue whiting
—	—	—	—	—	—	Sprats
—	—	—	—	—	—	Other pelagic
14,333	1,981.1	20,727	2,361.1	26,847	2,906.2	TOTAL
53,670	34,181.2	116,205	76,405.2	37,776	11,317.5	WET FISH
—	—	—	—	—	—	SHELL FISH
+	+	21	7.7	108	38.4	Brown shrimps
—	—	—	—	17	4.9	Whelks
12	6.1	72	36.3	119	74.5	Periwinkles
2	12.0	+	1.0	3	26.3	Edible crabs
—	—	—	—	—	—	Lobsters
—	—	375	453.6	18	20.7	Oysters
—	—	—	—	—	—	Pink shrimps
—	—	—	—	—	—	Crawfish
—	—	2	0.2	2	0.6	Cockles
1	0.4	+	+	123	197.1	Scallops
—	—	—	—	—	—	Mussels
3	5.7	297	570.4	1,292	2,500.5	Norway lobsters
77	142.4	19	36.9	11	17.4	Squids
+	+	—	—	—	—	Queen scallops
—	—	—	—	+	0.3	Velvet crabs
—	—	—	—	—	—	Squat lobsters
7	3.0	1	0.2	3	1.1	Other shellfish
101	169.7	786	1,106.4	1,697	2,881.7	TOTAL
53,771	34,350.9	116,991	77,511.7	39,473	14,199.2	TOTAL OF ALL FISH

TABLE 6—continued

	EAST COAST					
	Macduff		Buckie		Lossiemouth	
DEMERSAL FISH	m.t.	£'000	m.t.	£'000	m.t.	£'000
Blue ling	—	—	—	—	—	—
Brill	+	0.3	1	1.4	1	1.6
Catfish	7	4.7	10	5.2	1	0.7
Cod	517	483.3	306	256.4	85	82.1
Conger eels	+	+	+	+	+	+
Dabs	123	51.9	45	20.8	68	35.5
Dogfish	104	48.2	31	13.7	5	1.8
Dover sole	—	—	+	+	+	+
Flounders	—	—	—	—	—	—
Greenland halibut	—	—	—	—	—	—
Gurnards	+	+	+	+	—	—
Haddock	2,020	1,515.3	439	333.1	456	301.2
Hake	11	15.4	4	6.7	1	0.9
Halibut	+	1.0	1	4.0	+	1.1
Lemon sole	85	128.0	56	60.9	26	38.2
Ling	12	7.5	38	21.4	6	1.9
Lythe	+	+	1	0.6	+	+
Megrims	18	17.3	48	37.2	4	2.7
Monks	60	108.4	295	541.6	35	69.6
Norway pout	—	—	—	—	—	—
Plaice	262	206.0	184	145.6	112	92.1
Roundnose grenadier	—	—	—	—	—	—
Redfish	—	—	—	—	—	—
Saithe	15	6.1	16	5.7	19	9.2
Sandeels	—	—	—	—	—	—
Skate	54	22.6	61	18.3	22	7.4
Tusk	+	+	+	+	—	—
Turbot	1	2.4	3	14.4	+	0.8
Whiting	1,031	496.2	257	99.7	33	10.6
Witches	33	25.5	81	50.9	7	3.9
Livers	—	—	+	+	—	—
Roes	3	4.4	2	3.2	1	0.9
Other demersal	1	1.5	+	0.3	+	0.1
TOTAL	4,358	3,146.1	1,877	1,641.3	880	662.2
PELAGIC FISH						
Herring	—	—	—	—	—	—
Horse mackerel	—	—	—	—	—	—
Mackerel	1	0.2	1	+	—	—
Blue whiting	—	—	—	—	—	—
Sprats	—	—	—	—	—	—
Other pelagic	—	—	—	—	—	—
TOTAL	1	0.2	1	+	—	—
WET FISH	4,359	3,146.2	1,878	1,641.3	880	662.2
SHELL FISH						
Brown shrimps	—	—	—	—	—	—
Whelks	—	—	21	7.2	+	0.1
Periwinkles	1	0.4	—	—	9	3.5
Edible crabs	70	35.0	4	1.3	64	32.3
Lobsters	2	13.4	+	1.3	4	27.4
Oysters	—	—	—	—	—	—
Pink shrimps	—	—	296	367.8	—	—
Crawfish	—	—	—	—	—	—
Cockles	—	—	—	—	—	—
Scallops	—	—	373	573.1	—	—
Mussels	—	—	—	—	355	49.1
Norway lobsters	72	107.7	1,042	1,938.9	743	1,163.5
Squids	11	19.2	16	18.9	14	15.6
Queen scallops	—	—	—	—	+	0.2
Velvet crabs	—	—	—	—	—	—
Squat lobsters	—	—	—	—	—	—
Other shellfish	—	—	—	—	—	—
TOTAL	156	175.7	1,753	2,908.4	1,188	1,291.7
TOTAL OF ALL FISH	4,516	3,322.0	3,631	4,549.8	2,068	1,953.9

TABLE 6—continued

EAST COAST		ORKNEY AND SHETLAND				
Wick		Orkney		Shetland		
m.t.	£'000	m.t.	£'000	m.t.	£'000	DEMERSAL FISH
+	+	3	1.5	+	0.1	Blue ling
+	0.8	+	0.1	1	3.3	Brill
4	2.7	5	4.4	34	26.6	Catfish
2,562	2,455.4	516	445.8	3,304	2,797.1	Cod
2	0.5	1	0.2	1	0.4	Conger eels
63	23.6	2	0.5	1	0.5	Dabs
394	249.0	167	106.3	18	4.7	Dogfish
+	+	—	—	1	0.5	Dover sole
—	—	—	—	—	—	Flounders
—	—	—	—	—	—	Greenland halibut
6	1.4	3	0.8	+	+	Gurnards
4,035	2,839.7	1,946	1,259.0	6,035	4,271.3	Haddock
17	24.1	6	8.3	78	129.9	Hake
3	13.9	2	8.9	7	19.8	Halibut
42	40.6	14	16.6	42	47.6	Lemon sole
123	73.6	80	51.1	494	270.4	Ling
27	19.4	4	3.1	45	28.5	Lythe
94	83.5	49	40.3	372	338.8	Megrimms
179	319.8	142	245.7	945	1,731.7	Monks
—	—	—	—	—	—	Norway pout
278	202.5	50	45.9	201	158.1	Plaice
—	—	—	—	—	—	Roundnose grenadier
1	0.2	3	0.8	54	1.6	Redfish
484	233.4	127	56.7	965	393.9	Saithe
—	—	—	—	8,140	249.2	Sandeels
455	228.9	124	50.4	309	76.4	Skate
5	6.4	2	1.0	11	2.8	Tusk
3	14.0	1	6.9	4	14.7	Turbot
735	354.9	710	358.3	4,260	2,363.9	Whiting
40	28.7	12	9.3	49	33.4	Witches
—	—	—	—	+	+	Livers
9	9.3	2	1.6	6	5.6	Roes
2	1.0	+	0.2	70	47.6	Other demersal
9,561	7,227.4	3,970	2,723.8	25,447	13,018.7	TOTAL
—	—	—	—	45,348	5,445.0	PELAGIC FISH
—	—	—	—	329	20.2	Herring
128	16.6	—	—	1,121	118.5	Horse mackerel
—	—	—	—	—	—	Mackerel
—	—	—	—	5	2.3	Blue whiting
—	—	—	—	—	—	Sprats
—	—	—	—	—	—	Other pelagic
128	16.6	—	—	46,803	5,586.0	TOTAL
9,689	7,244.0	3,970	2,723.8	72,250	18,604.7	WET FISH
—	—	—	—	—	—	SHELL FISH
—	—	42	10.1	246	56.0	Brown shrimps
37	14.7	14	4.8	—	—	Whelks
455	221.5	661	239.1	232	89.5	Periwinkles
35	311.3	105	839.2	6	69.2	Edible crabs
—	—	—	—	—	—	Lobsters
—	—	—	—	—	—	Oysters
+	0.1	—	—	—	—	Pink shrimps
—	—	—	—	—	—	Crawfish
—	—	1	0.3	—	—	Cockles
262	368.9	95	125.6	311	381.9	Scallops
—	—	—	—	—	—	Mussels
17	31.6	+	0.1	1	1.8	Norway lobsters
17	30.6	12	16.2	1	2.0	Squids
—	—	76	56.0	74	25.0	Queen scallops
1	1.6	124	140.2	1	0.5	Velvet crabs
—	—	—	—	—	—	Squat lobsters
—	—	58	18.5	—	—	Other shellfish
825	980.4	1,188	1,450.1	871	623.9	TOTAL
10,514	8,224.4	5,157	4,173.9	73,121	19,228.6	TOTAL OF ALL FISH

TABLE 6—continued

WEST COAST								
	Stornoway		Kinlochbervie		Lochinver		Ullapool	
	m.t.	£'000	m.t.	£'000	m.t.	£'000	m.t.	£'000
DEMERSAL FISH								
Blue ling	—	—	—	—	1	0.4	—	—
Brill	+	0.6	1	1.1	+	0.4	+	+
Catfish	—	—	3	1.6	2	1.2	+	+
Cod	130	100.6	3,278	2,790.5	772	669.2	53	42.4
Conger eels	7	3.4	1	0.2	7	2.2	+	+
Dabs	2	0.8	83	34.0	78	33.2	5	1.9
Dogfish	185	51.3	746	408.4	475	252.0	23	15.2
Dover sole	—	—	+	0.4	1	2.2	+	+
Flounders	—	—	+	+	—	—	—	—
Greenland halibut	—	—	—	—	—	—	—	—
Gurnards	—	—	16	2.7	8	1.2	+	0.1
Haddock	143	91.7	8,889	6,552.4	2,853	1,974.1	229	146.7
Hake	46	35.4	73	83.8	70	77.2	5	3.6
Halibut	2	5.9	16	43.3	6	24.8	+	1.5
Lemon sole	28	23.7	51	43.8	46	43.2	2	1.5
Ling	17	12.9	168	102.9	65	36.8	1	0.9
Lythe	15	10.2	61	39.9	25	15.3	1	0.9
Megrim	51	34.5	278	321.5	297	314.3	1	0.9
Monks	133	184.9	292	477.6	335	541.0	15	10.9
Norway pout	551	16.5	—	—	—	—	—	—
Plaice	23	11.5	444	296.3	493	394.4	5	2.6
Roundnose grenadier	—	—	—	—	+	0.1	—	—
Redfish	—	—	1	0.4	9	2.6	—	—
Saithe	7	2.4	825	297.4	193	69.8	4	2.1
Sandeels	13,564	389.5	—	—	—	—	—	—
Skate	60	22.4	732	373.7	563	258.9	42	18.2
Tusk	—	—	2	0.9	1	0.4	—	—
Turbot	1	3.2	10	24.5	15	78.6	+	1.0
Whiting	229	85.3	3,287	1,620.4	875	418.9	32	17.8
Witches	99	52.6	47	29.1	104	70.4	5	2.6
Livers	—	—	—	—	—	—	—	—
Roes	1	0.6	28	20.3	4	4.9	+	0.1
Other demersal	—	—	+	0.6	—	—	—	—
TOTAL	15,294	1,139.8	19,330	13,567.6	7,297	5,287.6	423	271.2
PELAGIC FISH								
Herring	761	29.5	10	1.0	—	—	10,775	1,241.4
Horse mackerel	663	30.2	—	—	—	—	365	25.8
Mackerel	3,095	215.8	1	0.2	—	—	140,289	15,856.5
Blue whiting	3,310	101.4	—	—	—	—	—	—
Sprats	62	2.8	—	—	—	—	64	3.8
Other pelagic	—	—	—	—	—	—	—	—
TOTAL	7,891	379.7	11	1.2	—	—	151,493	17,127.5
WET FISH	23,184	1,519.5	19,342	13,568.8	7,297	5,287.6	151,916	17,398.8
SHELL FISH								
Brown shrimps	—	—	—	—	—	—	—	—
Whelks	7	1.9	—	—	2	0.8	—	—
Periwinkles	182	76.4	—	—	3	1.3	31	14.0
Edible crabs	1,297	775.0	45	21.3	72	34.8	153	89.6
Lobsters	142	1,237.5	13	143.9	4	34.2	6	45.1
Oysters	—	—	—	—	—	—	—	—
Pink shrimps	—	—	—	—	—	—	—	—
Crawfish	8	61.2	—	—	—	—	+	1.4
Cockles	21	6.6	—	—	—	—	—	—
Scallops	534	998.6	39	44.6	21	27.6	153	210.4
Mussels	2	0.4	—	—	—	—	—	—
Norway lobsters	1,840	3,429.7	8	18.5	1,202	2,577.1	958	2,184.0
Squids	4	4.4	118	198.0	235	420.1	1	2.2
Queen scallops	—	—	—	—	—	—	—	—
Velvet crabs	482	776.3	5	8.4	21	31.0	27	40.1
Squat lobsters	—	—	—	—	—	—	—	—
Other shellfish	54	22.4	—	—	—	—	—	—
TOTAL	4,571	7,390.3	228	434.8	1,559	3,126.9	1,330	2,586.7
TOTAL OF ALL FISH	27,755	8,909.9	19,570	14,003.6	8,855.5	8,414.5	153,245	19,985.5

TABLE 6—continued

WEST COAST								
Mallaig		Oban		Campbeltown		Ayr		
m.t.	£'000	m.t.	£'000	m.t.	£'000	m.t.	£'000	DEMERSAL FISH
—	—	—	—	—	—	+	0.3	Blue ling
1	2.2	+	0.9	1	1.4	18	37.3	Brill
2	0.9	1	0.4	+	+	3	1.5	Catfish
706	655.9	90	91.0	131	123.5	1,110	1,133.1	Cod
79	22.0	1	0.4	1	0.3	43	17.0	Conger eels
2	0.7	3	1.1	1	0.2	75	25.3	Dabs
940	596.7	228	145.3	112	64.1	508	340.4	Dogfish
1	3.2	1	2.2	2	2.8	71	257.2	Dover sole
—	—	—	—	+	+	9	1.5	Flounders
—	—	—	—	—	—	+	+	Greenland halibut
6	2.2	2	0.9	+	+	18	6.3	Gurnards
2,759	1,971.1	243	171.4	5	3.6	1,295	851.0	Haddock
312	316.1	88	102.8	77	85.7	613	935.7	Hake
5	24.0	+	1.6	+	0.4	3	10.9	Halibut
38	33.2	13	14.1	3	2.4	26	27.5	Lemon sole
56	27.2	6	3.9	5	2.7	44	31.9	Ling
19	14.5	4	2.6	2	1.0	82	66.7	Lythe
416	349.6	35	30.3	1	0.4	28	16.4	Megrims
479	849.9	22	34.4	15	13.4	83	104.9	Monks
—	—	—	—	—	—	2	0.5	Norway pout
117	72.5	36	21.7	9	4.9	336	206.4	Plaice
—	—	—	—	—	—	—	—	Roundnose grenadier
+	0.1	+	+	—	—	2	0.4	Redfish
154	71.3	8	3.9	37	14.8	674	274.6	Saithe
—	—	—	—	—	—	—	—	Sandeels
399	203.7	93	50.9	37	13.3	371	229.8	Skate
2	0.8	—	—	—	—	1	0.6	Tusk
9	38.2	2	6.4	3	8.2	8	26.4	Turbot
1,767	760.2	410	207.6	74	26.2	649	273.6	Whiting
340	279.2	23	16.8	31	14.8	49	24.5	Witches
—	—	—	—	—	—	—	—	Livers
5	7.1	1	1.0	4	2.2	31	26.6	Roes
9	5.7	1	0.6	—	—	11	8.5	Other demersal
8,623	6,308.4	1,309	912.3	549	386.2	6,163	4,936.6	TOTAL
—	—	—	—	555	99.7	2,344	438.0	PELAGIC FISH
—	—	—	—	—	—	2	0.2	Herring
—	—	—	—	29	4.0	281	38.1	Horse mackerel
—	—	—	—	—	—	—	—	Mackerel
445	44.9	—	—	11	1.5	—	—	Blue whiting
—	—	—	—	—	—	—	—	Sprats
—	—	—	—	—	—	—	—	Other pelagic
445	44.9	—	—	595	105.2	2,627	476.4	TOTAL
9,068	6,353.3	1,309	912.3	1,144	491.4	8,790	5,412.9	WET FISH
—	—	—	—	—	—	28	43.5	SHELL FISH
7	2.1	6	1.3	36	9.4	84	24.0	Brown shrimps
432	184.3	326	145.1	196	83.9	313	132.8	Wheiks
255	123.3	638	517.5	235	223.1	34	17.6	Periwinkles
13	117.1	82	702.9	40	365.6	5	38.2	Edible crabs
—	—	—	—	—	—	—	—	Lobsters
—	—	—	—	—	—	—	—	Oysters
+	0.7	4	34.4	1	7.8	—	—	Pink shrimps
—	—	2	1.0	—	—	210	58.7	Crawfish
653	701.5	682	1,092.0	1,071	1,716.4	439	803.2	Cockles
—	—	—	—	—	—	+	+	Scallops
3,233	7,267.5	702	1,456.2	1,764	3,355.3	1,521	3,005.8	Mussels
61	99.8	4	6.9	2	2.7	102	168.4	Norway lobsters
15	9.3	—	—	277	129.5	4,954	2,208.6	Squids
112	187.2	289	515.1	254	490.1	11	17.9	Queen scallops
+	+	—	—	1	0.1	+	0.3	Velvet crabs
7	6.0	113	50.4	82	39.1	1	0.5	Squat lobsters
—	—	—	—	—	—	—	—	Other shellfish
4,789	8,698.8	2,848	4,523.0	3,960	6,423.0	7,703	6,519.5	TOTAL
13,857	15,052.1	4,156	5,435.2	5,104	6,914.5	16,493	11,932.4	TOTAL OF ALL FISH

FISH LANDINGS IN SCOTLAND BY UNITED KINGDOM VESSELS
DISTRICT OF SCOTLAND: WEIGHT AND VALUE BY SPECIES GROUPS
DEMERSAL SPECIES

TABLE 7

	Weight (Tonnes)					Value (£'000)				
	1983	1984	1985	1986	1987	1983	1984	1985	1986	1987
Eyemouth	8,032	8,271	8,453	6,101	6,694	5,112	5,196	5,108	4,692	5,776
Leith	45	17
Pittenweem	3,602	3,511	3,332	2,688	2,791	1,981	2,024	1,645	1,800	2,251
Arbroath	4,874	3,987	4,820	3,701	3,443	2,227	2,059	2,429	2,393	2,560
Aberdeen	49,822	40,613	45,944	42,485	39,336	25,366	24,721	26,823	29,436	32,200
Peterhead	95,183	93,717	105,041	108,065	95,478	49,437	56,005	59,934	71,231	74,044
Fraserburgh	23,347	15,786	12,298	11,839	10,929	8,718	7,855	6,642	7,764	8,411
Macduff	4,538	4,506	5,781	5,765	4,358	1,977	2,253	2,802	3,464	3,146
Buckie	1,904	2,682	2,680	2,091	1,877	949	1,475	1,542	1,550	1,641
Lossiemouth	989	693	537	482	880	523	423	312	365	662
Wick	4,520	5,296	6,077	6,226	9,561	1,933	2,913	3,235	3,788	7,227
Orkney	321	1,028	2,261	3,668	3,970	109	291	1,153	2,095	2,724
Shetland	48,530	46,613	32,587	28,351	25,447	6,602	7,641	9,337	10,399	13,019
Stornoway	14,733	13,980	20,097	25,597	15,294	990	1,018	1,147	1,383	1,140
Kinlochbervie	..	17,753	18,984	15,601	19,330	..	10,074	10,433	9,490	13,568
Lochinver	6,510	7,297	4,088	5,288
Ullapool	17,323	8,525	6,786	244	423	8,080	4,109	3,968	126	271
Mallaig	5,311	6,640	6,911	4,956	8,623	2,376	3,289	4,031	3,581	6,308
Oban	3,987	2,870	2,201	1,190	1,309	1,756	1,485	1,138	820	912
Campbeltown	870	663	974	643	549	279	235	411	442	386
Ayr	4,918	5,615	8,977	5,583	6,163	2,672	2,933	5,066	4,144	4,937
Scotland	292,874	282,749	294,739	281,785	263,752	121,102	135,997	147,153	163,050	186,472

FISH LANDINGS IN SCOTLAND BY UNITED KINGDOM VESSELS
DISTRICT OF SCOTLAND: WEIGHT AND VALUE BY SPECIES GROUPS
PELAGIC SPECIES

TABLE 7—continued

	Weight (Tonnes)					Value (£'000)				
	1983	1984	1985	1986	1987	1983	1984	1985	1986	1987
Eyemouth	+	+	-	23	10	+	+	-	2	2
Leith	137	9
Pittenweem	14	2	1	27	68	1	3	+	5	11
Arbroath	1	1	-	-	190	+	1	-	-	36
Aberdeen	11	499	3,295	11,943	14,333	2	84	344	1,600	1,981
Peterhead	44	837	3,432	11,014	20,727	5	104	377	1,053	2,361
Fraserburgh	13,508	19,241	27,222	26,526	26,847	1,512	2,073	2,818	3,019	2,906
Macduff	11	41	-	27	1	2	2	-	7	+
Buckie	-	-	-	-	1	-	-	-	-	+
Lossiemouth	-	147	-	135	-	-	16	-	19	-
Wick	1,136	574	314	260	128	112	67	29	24	17
Orkney	-	-	-	-	-	-	-	-	-	-
Shetland	4,656	18,342	35,757	51,828	46,803	644	2,289	4,081	5,287	5,586
Stornoway	6,811	6,887	8,942	7,928	7,891	382	418	467	283	380
Kinlochbervie	..	-	-	-	11	..	-	-	-	1
Lochinver
Ullapool	139,880	173,708	177,916	119,603	151,493	15,841	18,165	19,651	12,660	17,128
Mallaig	3,001	852	1,875	1,256	445	414	91	169	135	45
Oban	54	181	132	-	-	7	25	15	-	-
Campbeltown	2,070	1,974	1,947	1,037	595	380	370	412	289	105
Ayr	2,227	2,736	2,268	3,100	2,627	616	739	612	989	476
Scotland	173,560	226,020	263,099	234,707	272,169	19,928	24,445	28,974	25,370	31,036

FISH LANDINGS IN SCOTLAND BY UNITED KINGDOM VESSELS

TABLE 7—continued

DISTRICT OF SCOTLAND: WEIGHT AND VALUE BY SPECIES GROUPS

SHELLFISH SPECIES

	Weight (Tonnes)					Value (£'000)				
	1983	1984	1985	1986	1987	1983	1984	1985	1986	1987
Eyemouth	1,103	2,445	1,753	1,892	1,806	988	2,576	2,204	2,379	2,520
Leith	787	940
Pittenweem	1,215	1,318	1,479	1,647	1,185	1,191	1,308	1,621	2,056	1,594
Arbroath	370	347	295	331	398	378	426	490	509	663
Aberdeen	44	59	106	405	101	33	71	118	547	170
Peterhead	809	112	921	247	786	780	113	946	291	1,106
Fraserburgh	1,669	967	1,679	1,771	1,697	1,670	913	1,987	2,596	2,882
Macduff	66	126	143	137	156	63	137	163	154	176
Buckie	1,384	1,108	1,761	1,935	1,753	1,325	1,096	2,053	2,796	2,908
Lossiemouth	597	579	1,175	2,174	1,188	621	587	1,128	1,440	1,292
Wick	640	773	585	738	825	510	662	544	859	980
Orkney	848	1,077	954	861	1,188	723	1,007	880	896	1,450
Shetland	884	921	642	738	871	508	561	417	622	624
Stornoway	3,145	3,826	4,095	3,108	4,571	3,082	4,128	5,103	4,568	7,390
Kinlochbervie	..	156	134	224	228	..	349	315	432	435
Lochinver	1,165	1,559	2,055	3,127
Ullapool	2,046	2,536	2,200	1,127	1,330	2,640	2,935	2,919	1,835	2,587
Mallaig	3,991	5,085	4,725	4,384	4,789	4,084	5,484	6,159	7,066	8,699
Oban	2,372	2,307	1,955	2,177	2,848	2,037	2,371	2,394	3,210	4,523
Campbeltown	4,471	4,308	4,133	3,813	3,960	4,095	4,705	4,801	5,956	6,423
Ayr	6,275	6,494	6,000	5,923	7,703	3,516	4,052	4,735	5,763	6,520
Scotland	32,713	34,543	34,732	34,798	38,941	29,183	33,477	38,976	46,030	56,067

FISH LANDINGS IN SCOTLAND BY UNITED KINGDOM VESSELS

TABLE 7—continued

DISTRICT OF SCOTLAND: WEIGHT AND VALUE

ALL SPECIES

	Weight (Tonnes)					Value (£'000)				
	1983	1984	1985	1986	1987	1983	1984	1985	1986	1987
Eyemouth	9,134	10,716	10,207	8,015	8,510	6,100	7,772	7,312	7,074	8,299
Leith	969	966
Pittenweem	4,830	4,830	4,812	4,362	4,044	3,173	3,334	3,267	3,861	3,856
Arbroath	5,245	4,335	5,114	4,032	4,031	2,606	2,485	2,919	2,902	3,258
Aberdeen	49,876	41,171	49,346	54,833	53,771	25,401	24,877	27,285	31,583	34,351
Peterhead	96,036	94,666	109,394	119,326	116,991	50,222	56,222	61,256	72,575	77,512
Fraserburgh	38,524	35,994	41,198	40,136	39,473	11,901	10,841	11,447	13,379	14,199
Macduff	4,616	4,673	5,923	5,929	4,516	2,042	2,392	2,965	3,624	3,322
Buckie	3,288	3,790	4,441	4,026	3,631	2,274	2,570	3,594	4,346	4,550
Lossiemouth	1,586	1,419	1,712	2,792	2,068	1,145	1,025	1,439	1,824	1,954
Wick	6,296	6,643	6,975	7,225	10,514	2,555	3,642	3,807	4,671	8,224
Orkney	1,169	2,105	3,214	4,530	5,157	831	1,297	2,033	2,991	4,174
Shetland	54,070	65,876	68,986	80,916	73,121	7,754	10,491	13,834	16,308	19,229
Stornoway	24,689	24,693	33,134	36,633	27,755	4,454	5,564	6,717	6,234	8,910
Kinlochbervie	..	17,910	19,118	15,824	19,570	..	10,423	10,749	9,921	14,004
Lochinver	7,675	8,855	6,144	8,414
Ullapool	159,249	184,768	186,902	120,975	153,245	26,561	25,209	26,538	14,621	19,985
Mallaig	12,303	12,577	13,510	10,596	13,857	6,874	8,863	10,358	10,781	15,052
Oban	6,412	5,359	4,287	3,368	4,156	3,800	3,881	3,547	4,029	5,435
Campbeltown	7,411	6,945	7,054	5,493	5,104	4,755	5,309	5,625	6,686	6,914
Ayr	13,419	14,844	17,244	14,606	16,493	6,803	7,723	10,413	10,896	11,932
Scotland	499,121	543,312	592,570	551,290	574,862	170,213	193,920	215,103	234,450	273,575

LANDINGS IN SCOTLAND BY UNITED KINGDOM VESSELS
BY METHOD OF FISHING

TABLE 8
(a) Weight (tonnes)

Method of fishing	1983	1984	1985	1986	1987
Demersal trawl	84,453	75,168	71,243	66,905	77,985
Demersal pair trawl	35,446	44,910	74,763	57,019	63,580
Industrial trawl	50,079	46,873	35,892	36,432	22,317
Seine net	116,188	110,422	105,994	116,705	93,797
Lines	516	193	113	239	658
Beam trawl	—	644	829	856	1,457
Demersal gill nets	—	471	345	526	632
Other demersal nets	1,244	84	64	50	59
Purse seine	134,252	202,405	230,721	195,241	218,526
Pelagic trawl	39,128	23,464	32,213	39,177	52,716
Pelagic gill nets	14	67	30	26	2
Pelagic ring net	—	—	—	—	—
Nephrop trawl	18,026	19,245	21,963	20,657	20,291
Shrimp trawl	2,398	45	1,776	472	901
Queen scallop trawl	1,380	1,083	1,297	436	580
Scallop dredging	7,753	8,584	5,865	6,539	9,070
Creel fishing	5,348	6,797	6,596	6,316	9,034
Shellfishing by hand	2,896	2,859	2,866	3,695	3,257
Total	499,121	543,312	592,570	551,290	574,862

TABLE 8—continued

(b) Value (£'000)

Method of fishing	1983	1984	1985	1986	1987
Demersal trawl	39,813	40,887	41,671	46,913	61,545
Demersal pair trawl	18,023	25,499	39,778	35,421	47,048
Industrial trawl	1,541	1,599	1,113	1,039	663
Seine net	59,284	66,414	62,163	77,908	73,641
Lines	363	107	61	138	524
Beam trawl	—	587	731	1,133	1,873
Demersal gill nets	—	338	278	417	546
Other demersal nets	1,053	195	142	84	64
Purse seine	14,552	21,328	25,003	20,804	25,241
Pelagic trawl	5,342	3,085	3,963	4,500	5,609
Pelagic gill nets	9	22	7	9	1
Pelagic ring net	1	—	—	—	—
Nephrop trawl	16,095	17,646	23,040	28,071	30,266
Shrimp trawl	2,107	47	1,548	444	1,086
Queen scallop trawl	445	321	447	192	284
Scallop dredging	4,134	5,917	4,646	5,943	8,761
Creel fishing	6,297	8,607	9,234	9,944	14,660
Shellfishing by hand	1,156	1,321	1,277	1,491	1,765
Total	170,213	193,920	215,103	234,450	273,575

FISH LANDINGS IN SCOTLAND BY UNITED KINGDOM VESSELS

TABLE 9

EACH SPECIES BY METHOD OF FISHING

TONNES

	Demersal Trawl	Demersal Pair Trawl	Industrial Trawl	Seine Net	Lines	Beam Trawl	Demersal Gill Net	Other Demersal Nets	Purse Seine	Pelagic Trawl
DEMERSAL FISH										
Cod	14,261.0	17,344.4	—	20,951.9	212.1	67.7	550.0	12.9	—	0.8
Haddock	26,544.1	27,865.0	1.5	38,967.6	1.5	12.0	1.5	0.2	—	—
Plaice	2,385.1	590.1	0.1	2,612.3	0.1	817.6	4.2	0.4	—	—
Whiting	10,674.8	9,155.3	0.7	19,186.3	—	0.1	—	—	—	—
Saithe	5,658.6	4,437.6	—	2,953.2	13.0	0.3	14.2	—	—	—
Hake	713.3	114.9	0.1	508.4	18.2	—	15.8	—	—	—
Redfish	24.9	0.9	54.0	0.1	—	—	—	—	—	—
Brill	17.4	1.0	—	2.2	—	0.3	—	—	—	—
Catfish	255.1	104.1	—	669.2	0.2	9.9	0.1	—	—	—
Conger eels	123.3	2.9	—	3.7	0.7	—	—	—	—	—
Dabs	426.0	191.2	—	478.3	0.3	19.3	0.6	—	—	0.1
Dogfish	2,680.3	875.3	0.1	1,513.0	351.3	1.1	14.7	—	—	0.4
Sandeels	—	—	21,703.8	—	—	—	—	—	—	—
Flounders	9.1	6.6	—	5.7	—	—	—	—	—	—
Greenland halibut	20.8	—	—	—	—	—	—	—	—	—
Gurnards	50.4	21.1	—	7.1	—	—	—	—	—	—
Halibut	45.4	20.4	0.1	43.1	—	0.2	0.1	—	—	—
Lemon sole	889.7	371.5	0.3	942.9	—	99.8	0.1	—	—	—
Dover sole	31.7	0.8	—	3.2	—	1.5	—	—	—	—
Roundnose grenadier	—	0.2	—	0.2	—	—	—	—	—	—
Ling	1,534.5	518.3	—	789.0	13.4	0.6	5.5	—	—	—
Lythe	214.0	148.8	0.1	71.7	0.1	—	0.8	0.2	—	—
Megrimms	1,461.4	82.7	—	850.4	—	7.2	—	—	—	—
Monks	4,078.7	258.1	1.2	1,328.6	—	197.8	0.6	0.1	—	—
Norway pout	—	—	551.2	0.3	—	—	—	—	—	—
Skate	2,560.6	691.5	2.3	683.3	5.0	176.8	20.4	40.2	—	0.1
Tusk	47.6	4.8	—	15.4	2.2	—	0.1	—	—	—
Turbot	73.3	14.9	0.2	38.3	—	29.4	0.2	—	—	—
Witches	778.1	70.7	0.8	986.4	—	7.5	0.1	—	—	—
Livers	11.4	0.2	—	0.2	—	—	—	—	—	—
Roes	116.3	53.4	—	83.3	0.2	—	1.3	—	—	—
Blue ling	16.5	—	—	—	0.2	—	—	—	—	—
Other demersal	62.5	18.6	—	35.1	23.4	0.1	0.1	—	—	—
TOTAL	75,766.2	62,965.3	22,316.5	93,730.4	641.9	1,449.1	631.3	54.0	—	1.4
PELAGIC FISH										
Herring	47.9	58.6	—	1.3	—	—	—	—	71,353.8	24,575.7
Mackerel	20.4	468.0	—	12.6	13.0	—	1.1	—	146,843.0	22,959.5
Horse mackerel	0.9	1.2	—	0.6	—	—	—	—	329.4	1,134.3
Blue whiting	—	—	—	0.1	—	—	—	—	—	3,309.7
Sprats	—	—	—	—	—	—	—	—	—	735.5
Other pelagic	—	—	—	—	—	—	—	—	—	—
TOTAL	69.2	527.7	—	14.6	13.0	—	1.1	—	218,526.2	52,714.7
WET FISH	75,835.3	63,493.0	22,316.5	93,745.0	654.9	1,449.1	632.4	54.0	218,526.2	52,716.0
SHELLFISH										
Cockles	1.2	—	—	1.4	—	—	—	—	—	—
Edible crabs	4.6	—	—	0.4	—	—	—	—	—	—
Lobsters	—	—	—	—	—	—	—	—	—	—
Mussels	—	—	—	—	—	—	—	—	—	—
Norway lobsters	1,401.5	5.6	0.4	7.9	2.8	—	—	—	—	—
Oysters	—	—	—	—	—	—	—	—	—	—
Periwinkles	—	—	—	—	—	—	—	—	—	—
Queen scallops	19.3	—	—	0.1	—	0.1	—	—	—	—
Scallops	0.2	—	—	—	—	1.2	—	—	—	—
Pink shrimps	83.4	—	—	—	—	—	—	—	—	—
Squids	551.4	80.5	—	41.7	—	—	—	—	—	—
Whelks	85.7	1.1	—	0.4	—	—	—	—	—	—
Brown shrimps	—	—	—	—	—	—	—	—	—	—
Crawfish	—	—	—	—	—	—	—	4.9	—	—
Velvet crabs	—	—	—	—	—	—	—	—	—	—
Squat lobsters	—	—	—	—	—	—	—	—	—	—
Other shellfish	2.4	—	—	0.2	—	6.5	—	—	—	—
TOTAL	2,149.8	87.4	0.4	52.1	2.8	7.8	—	4.9	—	—
TOTAL OF ALL FISH	77,985.1	63,580.4	22,317.0	93,797.1	657.6	1,456.9	632.4	58.9	218,526.2	52,716.0

EACH SPECIES BY METHOD OF FISHING

TONNES

Pelagic Gill Nets	Nephrop Trawl	Shrimp Trawl	Queen Scallop Trawl	Scallop Dredge	Creel Fishing	Shell Fishing by Hand	All Methods	
								DEMERSAL FISH
—	796.4	46.1	0.8	5.5	0.2	—	54,249.8	Cod
—	598.8	12.7	—	—	—	—	94,004.9	Haddock
—	241.8	2.6	2.8	15.6	—	—	6,672.6	Plaice
—	1,494.0	12.4	0.3	0.7	—	—	40,524.7	Whiting
—	111.5	6.4	—	—	—	—	13,194.8	Saithe
—	292.6	—	—	0.1	—	—	1,663.5	Hake
—	0.7	—	—	—	—	—	80.6	Redfish
—	3.6	—	0.1	1.3	—	—	25.9	Brill
—	23.4	1.8	—	—	—	—	1,063.8	Catfish
—	19.6	—	—	—	—	—	150.3	Conger eels
—	146.3	0.9	0.1	—	—	—	1,263.0	Dabs
—	419.3	12.3	0.6	1.4	—	—	5,869.6	Dogfish
—	—	—	—	—	—	—	21,703.8	Sandeels
—	6.5	—	—	—	—	—	27.9	Flounders
—	—	—	—	—	—	—	20.8	Greenland halibut
—	0.8	—	0.1	0.1	—	—	79.6	Gurnards
—	4.4	0.2	—	—	—	—	113.9	Halibut
—	134.3	5.1	0.1	1.0	—	—	2,444.8	Lemon sole
—	5.3	—	1.6	35.2	—	—	79.3	Dover sole
—	—	—	—	—	—	—	0.3	Roundnose grenadier
—	61.7	5.4	0.2	—	—	—	2,928.7	Ling
—	27.0	0.1	—	—	—	—	462.9	Lythe
—	169.4	0.4	—	—	—	—	2,571.5	Megrims
—	643.5	38.6	1.2	14.5	—	—	6,562.9	Monks
—	2.3	0.3	—	—	—	—	554.0	Norway pout
—	303.2	2.1	1.3	7.1	0.2	—	4,494.1	Skate
—	0.9	—	—	—	—	—	71.1	Tusk
—	12.2	0.4	0.1	0.9	—	—	169.9	Turbot
—	421.7	5.4	0.1	—	—	—	2,271.0	Witches
—	0.2	—	—	—	—	—	12.0	Livers
—	2.5	—	—	—	—	—	257.0	Roes
—	—	—	—	—	—	—	16.7	Blue ling
—	5.1	0.3	—	—	—	—	146.2	Other demersal
—	5,949.2	153.6	9.4	83.3	0.3	—	263,752.1	TOTAL
								PELAGIC FISH
1.5	263.5	—	—	—	—	—	96,302.3	Herring
—	36.8	—	0.1	—	—	—	170,354.2	Mackerel
—	1.0	—	—	—	—	—	1,467.4	Horse mackerel
—	—	—	—	—	—	—	3,309.8	Blue whiting
—	—	—	—	—	—	—	735.5	Sprats
—	—	—	—	—	—	—	—	Other pelagic
1.5	301.3	—	0.1	—	—	—	272,169.3	TOTAL
								WET FISH
1.5	6,250.5	153.7	9.5	83.3	0.3	—	535,921.3	TOTAL
								SHELLFISH
—	0.7	—	—	—	2.4	230.9	236.6	Cockles
—	3.8	—	—	—	5,198.3	—	5,207.0	Edible crabs
—	0.7	—	—	—	602.9	0.1	603.8	Lobsters
—	—	—	—	—	—	383.8	383.8	Mussels
—	13,911.7	33.8	1.0	—	1,171.4	—	16,536.1	Norway lobsters
—	—	—	—	—	—	—	—	Oysters
—	—	—	—	—	—	2,057.5	2,057.5	Periwinkles
—	8.2	—	565.4	4,802.4	—	0.6	5,396.2	Queen scallops
—	0.3	—	3.3	4,174.4	—	578.8	4,758.1	Scallops
—	5.2	685.9	—	—	—	—	774.5	Pink shrimps
—	38.7	—	0.1	0.1	—	—	712.5	Squids
—	68.6	0.2	1.0	9.8	414.3	0.2	581.4	Whelks
—	0.1	27.6	—	—	—	—	27.7	Brown shrimps
—	—	—	—	—	6.7	1.6	13.4	Crawfish
—	—	—	—	—	1,326.6	—	1,326.7	Velvet crabs
—	0.6	—	—	—	0.1	—	0.7	Squat lobsters
—	1.8	—	—	—	310.7	3.4	324.9	Other shellfish
—	14,040.3	747.5	570.9	8,986.8	9,033.3	3,256.9	38,941.0	TOTAL
1.5	20,290.8	901.2	580.4	9,070.1	9,033.7	3,256.9	574,862.3	TOTAL OF ALL FISH

EACH SPECIES BY METHOD OF FISHING

£'000

	Demersal				Lines	Demersal			Purse Seine	Pelagic Trawl
	Demersal Trawl	Pair Trawl	Industrial Trawl	Seine Net		Beam Trawl	Gill Net	Other Demersal Nets		
DEMERSAL FISH										
Cod	13,002.8	15,250.2	+	19,734.8	167.2	60.3	474.2	9.2	-	0.7
Haddock	18,510.1	21,716.5	0.9	31,017.7	1.0	7.7	0.8	0.1	-	-
Plaice	1,754.9	417.4	+	1,941.2	+	909.4	5.5	0.1	-	-
Whiting	5,176.1	4,628.8	0.3	10,044.8	-	+	+	+	-	-
Saithe	2,675.2	1,967.4	+	1,376.5	3.7	0.2	5.5	-	-	-
Hake	997.5	170.6	+	607.3	44.9	+	28.6	-	-	-
Redfish	8.3	0.1	1.6	+	-	-	-	-	-	-
Brill	40.5	1.2	+	5.2	-	0.9	+	+	-	-
Catfish	212.1	88.7	-	611.0	+	10.2	+	-	-	-
Conger eels	44.5	0.9	-	2.7	0.2	+	+	-	-	-
Dabs	172.9	72.3	+	196.0	+	9.4	0.4	+	-	+
Dogfish	1,564.9	446.3	+	791.1	257.5	0.5	10.2	-	-	0.2
Sandeels	+	1.5	638.7	0.7	-	-	-	-	-	-
Flounders	4.6	2.9	-	5.2	-	-	-	-	-	-
Greenland halibut	14.0	-	-	-	-	-	-	-	-	-
Gurnards	14.5	4.4	-	2.0	-	-	-	-	-	-
Halibut	175.1	73.3	0.3	131.8	-	1.2	0.3	-	-	-
Lemon sole	1,254.6	502.4	0.1	1,516.9	-	196.3	+	+	-	-
Dover sole	119.3	1.8	-	9.7	-	6.8	+	-	-	-
Roundnose grenadier	-	+	-	1.2	-	-	-	-	-	-
Ling	955.1	330.3	-	547.5	12.6	0.3	2.7	+	-	-
Lythe	163.7	105.3	+	54.5	+	-	0.6	0.1	-	-
Megrim	1,369.3	72.8	-	846.4	-	8.4	+	-	-	-
Monks	7,470.9	453.0	0.9	2,515.5	-	383.6	0.6	+	-	-
Norway pout	+	-	16.5	0.6	-	-	-	-	-	-
Skate	1,193.0	326.0	1.1	319.4	2.2	77.6	12.6	15.9	-	+
Tusk	18.4	2.0	-	10.1	5.4	-	+	-	-	-
Turbot	334.9	56.0	0.3	155.5	+	188.1	1.0	-	-	-
Witches	671.2	55.6	0.3	1,013.1	-	8.1	+	-	-	-
Livers	8.9	+	-	+	-	-	-	-	-	-
Roes	111.9	40.8	-	72.8	0.2	+	1.8	+	-	-
Blue ling	9.7	-	-	-	0.3	-	-	-	-	-
Other demersal	35.0	11.7	+	15.7	24.0	+	0.8	-	-	-
TOTAL	58,084.0	46,800.5	661.4	73,546.8	519.4	1,869.3	545.9	25.6	-	1.0
PELAGIC FISH										
Herring	13.5	8.5	-	0.4	-	-	-	-	8,497.9	2,937.6
Mackerel	4.6	87.8	-	2.6	2.6	-	0.4	-	16,722.6	2,420.3
Horse mackerel	0.1	+	-	+	-	-	-	-	20.2	63.4
Blue whiting	-	-	-	+	-	-	-	-	-	101.4
Sprats	-	-	-	-	-	-	-	-	-	85.6
Other pelagic	-	-	-	-	-	-	-	-	-	-
TOTAL	18.3	96.4	-	3.1	2.6	-	0.4	-	25,240.7	5,608.3
WET FISH	58,102.3	46,896.9	661.4	73,549.9	522.1	1,869.3	546.2	25.6	25,240.7	5,609.3
SHELLFISH										
Cockles	0.5	-	-	0.2	-	-	-	-	-	-
Edible crabs	2.9	-	-	0.3	-	-	-	-	-	-
Lobsters	+	-	+	-	-	-	+	-	-	-
Mussels	-	-	-	-	-	-	-	-	-	-
Norway lobsters	2,353.4	12.1	1.3	12.5	2.1	-	-	-	-	+
Oysters	-	-	-	-	-	-	-	-	-	-
Periwinkles	-	-	-	-	-	-	-	-	-	-
Queen scallops	7.7	+	-	+	-	+	-	-	-	-
Scallops	0.1	-	-	-	-	0.4	-	-	-	-
Pink shrimps	96.5	-	-	-	-	-	-	-	-	-
Squids	950.3	138.8	-	78.3	-	-	-	-	-	-
Whelks	30.7	0.3	-	+	-	+	-	-	-	-
Brown shrimps	-	-	-	-	-	-	-	-	-	-
Crawfish	-	0.1	-	-	-	-	-	38.0	-	-
Velvet crabs	-	-	-	-	-	-	-	-	-	-
Squat lobsters	-	-	-	-	-	-	-	-	-	-
Other shellfish	0.7	+	-	+	-	2.9	-	-	-	-
TOTAL	3,442.8	151.4	1.4	91.5	2.1	3.4	+	38.0	-	+
TOTAL OF ALL FISH	61,545.1	47,048.3	662.8	73,641.4	524.2	1,872.7	546.2	63.6	25,240.7	5,609.3

EACH SPECIES BY METHOD OF FISHING

£'000

Pelagic Gill Nets	Nephrop Trawl	Shrimp Trawl	Queen Scallop Trawl	Scallop Dredge	Creel Fishing	Shell Fishing by Hand	All Methods	
								DEMERSAL FISH
-	637.8	35.7	0.5	2.8	+	-	49,376.3	Cod
-	350.6	7.6	+	-	-	-	71,613.1	Haddock
-	174.0	1.6	1.1	7.7	-	-	5,213.0	Plaice
-	484.3	5.4	0.1	0.3	-	-	20,340.2	Whiting
-	37.2	2.4	-	-	-	-	6,068.2	Saithe
-	293.7	+	+	+	-	-	2,142.9	Hake
-	0.2	-	-	-	-	-	10.2	Redfish
-	4.9	+	0.2	2.0	-	-	55.0	Brill
-	14.7	1.3	-	+	-	-	938.0	Catfish
-	7.6	-	0.6	-	+	-	56.4	Conger eels
-	60.2	0.4	+	-	-	-	511.8	Dabs
-	143.8	5.0	0.3	0.7	-	-	3,220.4	Dogfish
-	+	-	-	-	-	-	640.9	Sandeels
-	1.2	-	-	-	-	-	13.9	Flounders
-	+	-	-	-	-	-	14.0	Greenland halibut
-	0.2	-	+	+	-	-	21.2	Gurnards
-	15.9	0.7	-	0.1	-	-	398.8	Halibut
-	145.0	6.7	0.1	0.7	-	-	3,622.8	Lemon sole
-	9.7	+	6.1	124.1	-	-	277.6	Dover sole
-	-	-	-	-	-	-	1.3	Roundnose grenadier
-	35.0	3.3	0.7	-	-	-	1,887.5	Ling
-	15.2	+	+	+	-	-	339.7	Lythe
-	107.0	0.3	-	-	-	-	2,404.2	Megrim
-	1,131.7	74.9	1.5	9.4	-	-	12,042.1	Monks
-	0.5	0.5	-	-	-	-	18.0	Norway pout
-	113.3	0.9	0.4	2.4	+	-	2,064.9	Skate
-	0.4	+	-	-	-	-	36.3	Tusk
-	35.9	1.2	0.2	2.4	-	-	775.6	Turbot
-	276.6	3.7	+	+	-	-	2,028.7	Witches
-	+	-	-	-	-	-	9.1	Livers
-	2.0	-	-	-	-	-	229.5	Roes
-	-	-	-	-	-	-	10.0	Blue ling
-	2.5	0.2	-	-	-	-	90.0	Other demersal
-	4,101.1	152.0	11.9	152.7	0.2	-	186,471.8	TOTAL
								PELAGIC FISH
0.5	58.0	+	-	-	-	-	11,516.5	Herring
-	7.3	-	+	-	-	-	19,248.2	Mackerel
-	+	-	-	-	-	-	83.9	Horse mackerel
-	-	-	-	-	-	-	101.4	Blue whiting
-	-	-	-	-	-	-	85.6	Sprats
-	-	-	-	-	-	-	-	Other pelagic
0.5	65.4	+	+	-	-	-	31,035.6	TOTAL
-	4,166.5	152.0	11.9	152.7	0.2	-	217,507.4	WET FISH
								SHELLFISH
-	0.3	-	-	-	1.0	65.4	67.4	Cockles
-	1.3	-	-	-	2,929.6	-	2,934.1	Edible crabs
-	0.3	-	-	-	5,074.2	0.9	5,075.5	Lobsters
-	+	-	-	-	-	54.1	54.1	Mussels
-	26,017.9	83.4	0.4	-	4,160.2	-	32,643.3	Norway lobsters
-	-	-	-	-	-	-	-	Oysters
-	-	-	-	-	-	839.5	839.5	Periwinkles
-	3.9	-	266.3	2,150.5	-	0.4	2,428.9	Queen scallops
-	0.4	-	4.3	6,454.6	-	787.1	7,246.9	Scallops
-	5.7	806.8	-	-	-	-	909.0	Pink shrimps
-	44.2	-	0.3	+	-	-	1,211.9	Squids
-	23.8	+	0.3	2.6	99.3	+	157.1	Whelks
-	0.1	43.4	-	-	-	-	43.5	Brown shrimps
-	-	-	-	-	55.3	12.2	105.6	Crawfish
-	+	-	-	-	2,208.7	-	2,208.7	Velvet crabs
-	0.4	-	-	-	+	-	0.5	Squat lobsters
-	0.9	-	-	-	131.5	5.1	141.1	Other shellfish
-	26,099.1	933.6	271.6	8,607.8	14,659.8	1,764.8	56,067.3	TOTAL
0.5	30,265.6	1,085.6	283.5	8,760.5	14,660.0	1,764.8	273,574.7	TOTAL OF ALL FISH

FISH LANDINGS IN SCOTLAND BY UNITED KINGDOM VESSELS
EACH DISTRICT BY METHOD OF FISHING AND FISHING EFFORT

TABLE 10

	Demersal			Seine Net	Lines	Beam Trawl	Demersal	Other	Purse Seine	Pelagic Trawl
	Demersal Trawl	Pair Trawl	Industrial Trawl				Gill Net	Demersal Nets		
a) Fishing effort*										
Arrivals	20,339	8,478	651	13,279	1,762	245	2,303	506	1,434	1,604
Hours fishing	570,344	287,546	6,294	447,859	8,746	16,990	9,601	1,187	7,939	6,007
Days Absent	45,610	26,445	728	48,298	1,985	1,159	2,433	592	3,467	2,052
b) Weight (tonnes)										
District										
Eyemouth	1,628.9	3,305.4	—	1,661.2	—	—	—	13.6	—	—
Pittenweem	454.7	1,924.5	—	328.2	1.9	5.0	18.5	—	—	—
Arbroath	842.0	1,894.4	—	459.3	56.6	—	187.2	—	—	149.2
Aberdeen	14,022.8	5,363.8	—	18,523.4	34.6	1,400.0	115.9	—	13,985.4	309.4
Peterhead	12,962.5	27,622.3	—	55,204.7	6.9	43.4	57.4	—	7,014.1	13,340.3
Fraserburgh	6,229.6	1,700.6	—	1,968.2	124.1	0.9	164.5	—	26,665.5	164.0
Macduff	305.5	911.9	—	3,130.9	—	—	10.0	—	—	—
Buckie	1,023.7	43.3	—	287.8	5.8	3.3	—	—	—	—
Lossiemouth	563.2	—	—	149.7	—	—	—	—	—	—
Wick	3,249.7	4,561.3	—	1,731.7	23.3	—	15.2	—	128.0	—
Orkney	3,921.4	6.2	—	54.2	—	—	—	—	—	—
Shetland	11,453.6	1,086.5	8,196.2	4,669.8	29.1	4.3	10.0	—	45,936.9	864.1
Stornoway	162.0	—	14,120.8	—	1.8	—	—	4.9	1,922.5	5,965.8
Kinlochbervie	4,687.8	12,716.0	—	2,056.5	—	—	2.6	—	—	—
Lochinver	4,427.0	1,968.9	—	803.2	—	—	—	—	—	—
Ullapool	38.8	253.5	—	—	—	—	—	—	122,873.7	28,618.8
Mallaig	6,938.1	46.6	—	1,233.9	1.2	—	51.1	—	—	445.1
Oban	158.7	76.7	—	911.1	80.0	—	—	—	—	—
Campbeltown	227.7	0.8	—	6.5	47.7	—	—	—	—	578.5
Ayr	4,687.3	97.7	—	616.8	244.6	—	—	40.4	—	2,280.6
ALL DISTRICTS	77,985.1	63,580.4	22,317.0	93,797.1	657.6	1,456.9	632.4	58.9	218,526.2	52,716.0

c) Value (£'000)										
District										
Eyemouth	1,518.0	2,777.1	—	1,457.2	—	—	—	9.6	—	—
Pittenweem	409.6	1,488.1	—	264.0	0.3	5.5	18.5	—	—	—
Arbroath	649.2	1,421.8	—	292.1	45.9	—	147.5	—	—	31.1
Aberdeen	10,163.0	4,179.4	—	16,057.3	30.9	1,808.3	117.1	—	1,935.0	38.7
Peterhead	10,568.8	20,147.6	—	43,520.7	6.7	47.5	49.6	—	749.9	1,539.5
Fraserburgh	5,353.8	1,162.1	—	1,275.4	80.3	1.0	126.0	—	2,887.5	15.3
Macduff	286.2	734.1	—	2,135.7	—	—	12.2	—	—	—
Buckie	1,027.7	34.1	—	220.9	4.3	5.0	—	—	—	—
Lossiemouth	419.0	—	—	130.2	—	—	—	—	—	—
Wick	2,481.2	3,674.0	—	1,072.3	25.5	—	13.7	—	16.6	—
Orkney	2,696.5	4.0	—	39.7	—	—	—	—	—	—
Shetland	8,836.7	648.8	252.0	3,245.2	25.6	5.4	7.0	—	5,486.8	99.0
Stornoway	128.1	—	410.7	—	0.5	—	—	38.0	152.7	226.4
Kinlochbervie	3,313.2	9,035.3	—	1,423.7	—	—	1.8	—	—	—
Lochinver	3,681.3	1,408.2	—	552.3	—	—	—	—	—	—
Ullapool	33.4	173.0	—	—	—	—	—	—	14,012.3	3,115.2
Mallaig	5,730.1	36.9	—	831.7	0.6	—	52.7	—	—	44.9
Oban	138.2	51.8	—	623.5	68.8	—	—	—	—	—
Campbeltown	199.6	0.5	—	4.5	32.8	—	—	—	—	101.7
Ayr	3,911.2	71.5	—	495.2	202.0	—	—	16.0	—	397.6
ALL DISTRICTS	61,545.1	47,048.2	662.8	73,641.4	524.2	1,872.7	546.2	63.6	25,240.7	5,609.3

*There is a small discrepancy in fishing effort between tables 10, 13 and 14

EACH DISTRICT BY METHOD OF FISHING AND FISHING EFFORT

Pelagic Gill Nets	Nephrop Trawl	Shrimp Trawl	Queen Scallop Trawl	Scallop Dredge	Creel Fishing	Shell Fishing by Hand	All Methods	
5	50,127	496	1,053	7,749	92,890	2,789	205,710	a) Fishing effort
17	578,824	10,250	3,050	65,015	566,917	7,865	2,594,451	Arrivals
5	58,819	977	1,112	11,754	103,673	2,612	311,721	Hours fishing
								Days Absent
								b) Weight (tonnes)
								District
—	989.0	97.4	—	—	450.8	363.9	8,510.1	Eyemouth
—	875.5	—	—	0.6	301.8	133.4	4,044.2	Pittenweem
—	236.0	—	—	—	179.2	27.0	4,030.9	Arbroath
—	2.6	—	—	—	13.2	—	53,771.0	Aberdeen
—	286.9	380.5	—	—	72.2	—	116,991.4	Peterhead
—	2,170.8	21.2	—	124.2	121.9	17.3	39,472.7	Fraserburgh
—	83.8	—	—	—	72.3	1.1	4,515.5	Macduff
—	1,513.9	373.7	—	377.4	2.3	—	3,631.0	Buckie
—	924.5	—	—	—	67.3	363.4	2,068.1	Lossiemouth
—	12.1	—	—	263.0	492.7	36.8	10,514.0	Wick
—	—	—	52.2	71.2	990.2	62.1	5,157.4	Orkney
—	—	—	64.8	320.0	485.2	0.4	73,120.9	Shetland
1.5	2,585.9	—	—	407.9	2,250.3	331.9	27,755.4	Stornoway
—	—	—	—	38.8	67.9	—	19,569.6	Kinlochbervie
—	1,399.1	—	—	21.3	233.2	2.6	8,855.4	Lochinver
—	997.3	—	—	138.1	279.3	45.6	153,245.1	Ullapool
—	3,256.5	—	6.2	454.3	781.0	642.8	13,856.8	Mallaig
—	596.1	—	—	500.3	1,326.1	507.4	4,156.3	Oban
—	1,975.0	—	256.1	1,088.9	723.3	199.1	5,103.6	Campbeltown
—	2,385.8	28.4	201.1	5,264.2	123.6	522.2	16,492.9	Ayr
1.5	20,290.8	901.2	580.4	9,070.1	9,033.7	3,256.9	574,862.3	ALL DISTRICTS
								c) Value (£'000)
								District
—	1,631.7	81.2	—	—	695.7	128.1	8,298.6	Eyemouth
—	1,170.4	—	—	5.5	448.9	45.3	3,856.1	Pittenweem
—	319.3	—	—	—	346.6	4.6	3,258.1	Arbroath
—	3.2	—	—	—	18.1	—	34,350.9	Aberdeen
—	386.4	457.8	—	—	37.3	—	77,511.7	Peterhead
—	2,968.7	25.3	—	197.8	100.0	5.7	14,199.2	Fraserburgh
—	104.9	—	—	—	48.4	0.4	3,322.0	Macduff
—	2,202.0	477.5	—	575.9	2.3	—	4,549.8	Buckie
—	1,292.4	—	—	—	59.7	52.5	1,953.9	Lossiemouth
—	19.3	—	—	369.6	537.5	14.7	8,224.4	Wick
—	—	—	38.6	66.2	1,247.1	81.9	4,173.9	Orkney
—	—	—	21.9	384.5	215.1	0.6	19,228.6	Shetland
0.5	3,266.2	—	—	773.7	3,600.0	313.0	8,909.9	Stornoway
—	—	—	—	44.6	184.8	—	14,003.6	Kinlochbervie
—	2,157.7	—	—	27.6	586.1	1.3	8,414.5	Lochinver
—	1,871.4	—	—	190.0	555.8	34.4	19,985.5	Ullapool
—	5,431.9	—	3.9	550.7	2,023.1	345.6	15,052.1	Mallaig
—	890.9	—	—	786.9	2,425.1	450.2	5,435.2	Oban
—	3,212.6	—	119.5	1,721.7	1,426.4	95.1	6,914.5	Campbeltown
—	3,336.6	43.8	99.6	3,065.7	102.0	191.3	11,932.4	Ayr
0.5	30,265.6	1,085.6	283.5	8,760.5	14,660.0	1,764.8	273,574.7	ALL DISTRICTS

MAJOR SPECIES BY MONTH

	tonnes					£'000				
	1983	1984	1985	1986	1987	1983	1984	1985	1986	1987
COD										
January	2,951	2,517	3,551	2,124	2,537	2,342	2,067	2,594	2,114	2,488
February	4,316	4,211	3,675	3,546	3,272	2,722	2,710	2,778	3,008	2,841
March	5,179	5,160	4,175	2,651	3,155	3,117	3,094	3,108	2,530	3,125
April	5,553	4,780	4,624	4,166	4,652	3,585	3,457	3,838	3,848	4,550
May	7,449	6,986	7,873	5,309	7,556	4,485	4,610	5,640	5,150	6,469
June	7,313	6,879	7,771	5,311	9,475	4,418	4,826	5,669	4,537	7,254
July	5,396	5,163	5,787	4,144	5,755	3,148	3,676	3,987	3,241	4,828
August	5,070	4,308	4,886	3,400	3,685	3,392	3,071	3,613	2,834	3,488
September	3,727	3,511	4,945	3,384	4,347	2,804	2,630	3,510	3,000	4,241
October	2,925	4,048	4,887	4,068	3,867	2,440	3,022	3,698	3,669	4,047
November	4,029	3,460	3,494	3,801	3,395	3,099	2,700	2,968	3,492	3,463
December	2,490	2,901	2,956	2,575	2,555	2,261	2,290	2,517	2,559	2,583
HADDOCK										
January	4,840	7,173	6,622	9,286	8,159	3,013	4,425	4,778	5,204	6,271
February	10,603	9,648	7,374	12,917	9,284	4,319	4,861	5,282	5,919	6,469
March	10,696	10,737	7,177	8,568	8,577	4,721	5,232	5,279	5,007	6,321
April	9,664	8,253	6,775	10,024	7,509	4,045	4,552	4,576	5,921	5,821
May	7,868	7,820	8,330	7,383	6,483	3,738	4,452	4,650	4,961	5,155
June	8,683	6,555	6,468	8,177	7,021	4,276	4,371	3,776	5,760	5,683
July	9,754	7,949	11,465	11,221	8,059	3,734	4,809	5,239	6,407	5,883
August	11,904	9,095	13,171	12,745	7,585	4,895	5,636	5,719	6,981	5,660
September	10,802	8,110	16,201	13,923	8,725	4,961	5,176	5,848	7,621	6,602
October	7,935	8,685	14,208	13,021	8,840	4,433	5,494	6,132	7,821	6,839
November	9,429	6,809	11,691	9,736	7,300	4,851	4,866	5,596	7,060	5,914
December	6,352	4,905	9,595	5,897	6,463	3,943	3,577	3,901	4,789	4,995
SAITHE										
January	393	284	798	482	1,153	150	92	186	211	534
February	1,260	1,144	1,489	3,399	1,903	328	235	340	961	885
March	1,134	993	1,461	1,692	1,374	296	180	377	487	676
April	828	845	1,243	1,321	1,203	220	202	390	502	670
May	826	1,057	1,817	1,617	2,004	205	219	484	722	894
June	752	1,433	2,038	1,719	1,906	190	274	463	725	700
July	498	838	993	1,384	880	106	143	220	422	337
August	463	538	397	1,245	433	121	100	113	385	178
September	602	547	336	819	474	193	148	96	263	216
October	225	728	805	871	499	102	212	255	357	255
November	228	396	484	633	672	91	128	184	314	352
December	352	332	293	667	693	113	98	112	270	371
WHITING										
January	2,280	2,826	4,298	1,865	4,141	1,017	1,288	1,622	844	2,044
February	3,566	4,172	4,339	2,780	4,094	1,121	1,429	1,809	1,029	1,876
March	4,249	5,566	3,950	1,953	2,589	1,399	1,795	1,894	988	1,592
April	3,503	3,847	2,488	1,970	2,876	1,152	1,589	1,500	1,077	1,977
May	2,699	3,445	2,385	1,548	1,754	962	1,463	1,212	880	1,133
June	3,996	3,467	2,422	2,074	2,430	1,251	1,698	1,225	1,121	1,427
July	3,394	3,929	2,636	2,779	3,576	824	1,455	1,048	1,235	1,589
August	4,733	5,244	2,392	2,972	3,529	1,189	2,056	927	1,271	1,648
September	4,952	4,578	2,603	3,170	3,582	1,369	1,835	875	1,330	1,679
October	3,598	4,347	3,158	4,036	4,218	1,393	1,816	1,142	1,766	1,980
November	5,357	4,118	2,507	3,001	4,003	1,574	1,813	942	1,580	1,931
December	3,159	2,943	2,209	2,893	3,733	1,341	1,360	725	1,562	1,464
HERRING										
January	590	1,310	5,560	3,910	843	71	116	670	376	48
February	975	5,136	7,080	8,134	224	137	553	819	692	33
March	566	1,968	5,361	18,549	365	77	197	683	1,815	58
April	1	-	-	-	+	+	-	-	-	+
May	2	556	527	272	113	1	158	133	102	29
June	3,583	4,006	1,752	2,611	1,558	720	703	339	501	239
July	8,904	8,112	9,388	12,387	14,807	1,309	1,210	1,447	1,634	1,887
August	15,297	20,247	31,793	27,840	48,703	1,887	2,374	3,702	3,231	5,945
September	4,309	22,429	12,225	12,452	15,755	630	2,723	1,381	1,387	1,763
October	2,008	2,318	6,310	3,983	3,633	344	264	797	443	434
November	7,639	70	2,188	3,777	4,060	783	9	271	368	401
December	7,513	1,676	4,677	6,831	6,243	531	215	284	656	678
MACKEREL										
January	2	7,595	22,803	12,069	31,182	1	655	2,369	1,319	3,245
February	13	4,780	5,075	4,419	5,437	4	471	532	479	601
March	6	5,041	1,149	286	53	2	463	119	32	6
April	5	-	-	3	1	2	-	-	1	+
May	1	3	2	1	+	+	1	1	1	+
June	23	2	99	3	13	5	1	20	+	4
July	198	127	88	43	76	20	15	10	6	16
August	1,252	175	52	359	268	165	13	14	40	42
September	33,540	2,177	7,419	8,678	3,344	3,936	252	794	891	392
October	37,565	32,930	41,387	50,855	55,754	4,166	3,456	4,688	5,403	6,315
November	33,426	64,354	57,867	36,316	59,440	3,049	6,491	6,225	3,978	6,838
December	13,985	37,825	34,969	15,908	14,787	1,873	3,776	3,270	1,770	1,788

MAJOR SPECIES BY MONTH

		£ per tonne									
		1983	1984	1985	1986	1987	1983	1984	1985	1986	1987
COD						WHITING					
January	794	821	731	996	981	January	446	456	377	453	494
February	631	644	756	848	868	February	314	343	417	370	458
March	602	600	744	955	990	March	329	322	480	506	615
April	646	723	830	924	978	April	329	413	603	547	687
May	602	660	716	970	856	May	357	425	508	569	646
June	604	702	730	854	766	June	313	490	506	541	587
July	583	712	689	782	839	July	243	370	398	444	444
August	669	713	740	834	946	August	251	392	388	428	467
September	752	749	710	886	976	September	277	401	336	419	469
October	834	747	757	902	1,047	October	387	418	361	438	469
November	769	780	850	919	1,020	November	294	440	376	527	482
December	908	789	852	994	1,011	December	425	462	328	540	392
HADDOCK						HERRING					
January	623	617	722	560	769	January	121	89	121	96	57
February	406	504	716	458	697	February	140	108	116	85	146
March	441	487	736	584	737	March	136	100	127	98	160
April	419	552	675	591	775	April	384	—	—	—	—
May	480	569	558	672	795	May	498	284	252	374	258
June	496	667	584	704	809	June	201	175	194	192	154
July	383	605	457	571	730	July	147	149	154	132	127
August	411	620	434	548	746	August	123	117	116	116	122
September	460	638	361	547	757	September	146	121	113	111	112
October	559	633	423	601	774	October	171	114	126	111	119
November	515	715	479	725	810	November	103	129	124	97	99
December	624	729	407	812	773	December	71	128	61	96	109
SAITHE						MACKEREL					
January	381	324	233	439	463	January	552	86	104	109	104
February	260	205	229	283	465	February	336	99	105	108	110
March	261	181	258	288	492	March	395	92	104	111	113
April	266	239	314	380	557	April	423	—	—	206	355
May	248	207	266	447	446	May	478	333	284	487	—
June	253	191	227	422	367	June	205	500	200	145	305
July	213	171	221	305	383	July	99	118	118	132	208
August	262	186	286	309	410	August	132	74	277	111	158
September	321	272	287	321	457	September	117	116	107	103	117
October	453	291	317	410	511	October	111	105	113	106	113
November	401	323	380	496	524	November	91	101	108	110	115
December	322	295	380	405	536	December	134	100	94	111	121

LANDINGS IN SCOTLAND BY UNITED KINGDOM VESSELS

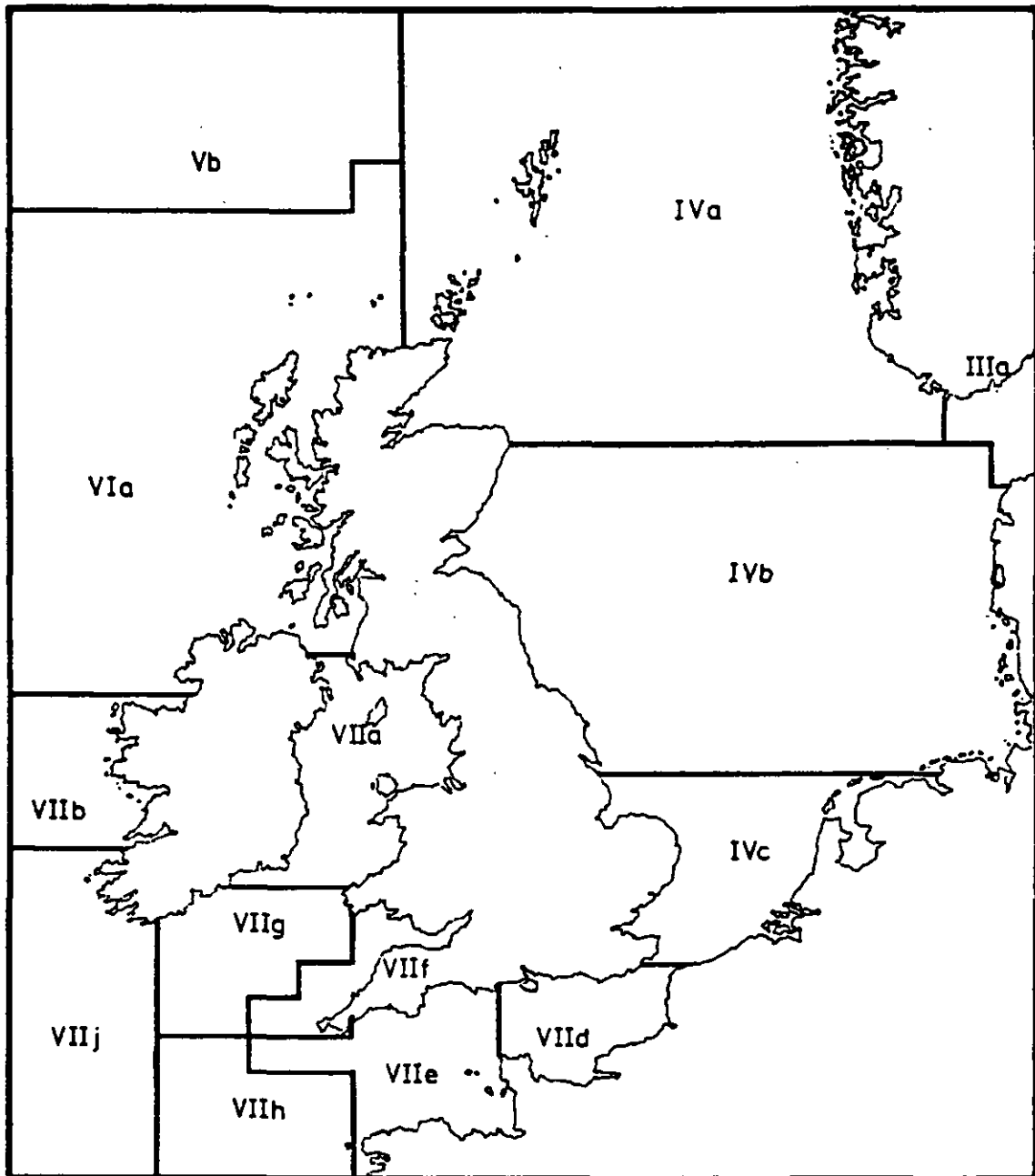
TABLE 12

VALUE OF LANDINGS PER MONTH BY MAJOR FISHING METHODS

£'000

	Demersal trawl 80'+	Demersal trawl 80'-	Seine Net	Pelagic Pair Trawl	All Methods
January	911	6,668	6,838	1,634	21,099
February	1,019	7,741	6,289	208	19,683
March	1,301	8,124	5,103	6	18,017
April	1,533	9,490	5,933	—	20,988
May	1,312	9,777	6,566	16	21,851
June	1,507	10,646	6,755	77	23,817
July	1,112	8,171	5,918	49	23,333
August	1,084	6,595	5,713	1,325	24,622
September	1,220	7,638	6,340	823	22,516
October	1,544	7,552	6,963	527	28,463
November	1,687	6,936	6,315	273	28,546
December	1,492	6,067	4,906	292	20,640
TOTAL	15,722	95,405	73,641	5,231	273,575

I.C.E.S. Fishing areas around the U.K. coastline



IIIa	Kattegat and Skagerrak	VIIb	West of Ireland
IVa	Northern North Sea	VIIc	English Channel, East
IVb	Middle North Sea	VIIe	English Channel, West
IVc	Southern North Sea	VIIf	Bristol Channel
Vb	Faroe	VIIg	South East Ireland
VIa	West of Scotland	VIIh	Little Sole Bank
VIIa	Irish Sea	VIIj	Great Sole Bank

	Northern North Sea (ICES Area) (IVa)	Middle North Sea (ICES Area) (IVb)	Total North Sea (ICES Area) (IV)	Barents Sea (ICES Area) (I)	Norwegian Coast (ICES Area) (IIa)	Bear Island and Spitzbergen (ICES Area) (IIb)	Faroe (ICES Area) (Vb)
(a) Fishing effort*							
Arrivals	56,100	42,612	98,712	—	6	11	8
Hours fishing	960,013	507,204	1,467,217	63	1,109	1,622	183
Days absent	114,183	54,974	169,157	—	114	193	46
(b) Value of catch (£'000)							
Demersal	114,612	29,984	144,596	93	320	802	65
Pelagic	9,561	1,200	10,761	—	—	—	42
Shellfish	11,259	4,876	16,135	—	—	—	+
Total	135,432	36,060	171,492	93	320	802	106
(c) Weight of catch (tonnes)							
DEMERSAL FISH							
Blue ling	1.0	—	1.0	—	—	—	—
Brill	4.1	0.7	4.8	—	—	—	—
Catfish	774.0	208.4	982.4	—	8.1	29.0	0.1
Cod	31,461.5	10,857.0	42,318.5	110.8	363.9	1,148.7	40.3
Conger eels	10.7	0.3	10.9	—	—	—	—
Dabs	546.8	522.0	1,068.8	—	0.9	0.1	0.1
Dogfish	2,404.4	341.9	2,746.5	—	—	—	0.5
Dover sole	1.4	2.1	3.5	—	—	—	—
Flounders	16.8	1.5	18.3	—	—	—	—
Greenland halibut	—	—	—	0.3	10.1	10.4	—
Gurnards	16.7	1.3	18.0	—	—	—	—
Haddock	57,585.1	14,830.5	72,415.6	0.2	39.6	4.8	37.3
Hake	381.9	18.6	400.6	—	—	—	—
Halibut	57.6	15.2	72.8	—	0.1	—	—
Lemon sole	1,048.8	1,160.7	2,209.6	—	—	—	0.1
Ling	2,216.9	65.0	2,281.9	—	0.2	0.3	1.3
Lythe	220.5	8.2	228.7	—	—	—	—
Megrim	1,441.8	15.2	1,457.0	—	1.1	—	1.3
Monks	4,410.8	502.1	4,912.8	—	—	0.1	2.5
Norway pout	0.6	—	0.6	—	—	—	—
Plaice	2,954.5	2,410.7	5,365.3	—	—	—	0.1
Roundnose grenadier	0.1	—	0.1	—	—	—	—
Redfish	55.2	—	55.3	—	8.1	0.6	—
Saithe	9,534.4	381.9	9,916.2	—	2.7	0.1	18.9
Sandeels	7,224.6	—	7,224.6	—	—	—	—
Skate	1,877.7	397.8	2,275.5	—	2.0	1.1	0.7
Tusk	47.8	1.4	49.2	—	—	—	0.1
Turbot	68.5	54.0	122.5	—	—	—	—
Whiting	29,133.0	4,135.0	33,268.0	—	2.8	—	0.2
Witches	1,369.9	207.8	1,577.8	—	0.1	—	—
Livers	11.8	0.2	12.0	—	—	—	—
Roes	124.3	26.0	150.3	—	—	—	—
Other demersal	105.6	6.6	112.2	—	0.1	—	—
TOTAL	155,108.8	36,172.2	191,281.0	111.3	439.7	1,195.2	103.4
PELAGIC FISH							
Herring	60,254.8	9,314.5	69,569.3	—	—	—	—
Horse mackerel	437.4	0.9	438.3	—	—	—	—
Mackerel	19,568.4	327.6	19,896.1	—	—	—	296.6
Blue whiting	0.1	—	0.1	—	—	—	—
Sprats	5.1	148.2	153.4	—	—	—	—
Other pelagic	—	—	—	—	—	—	—
TOTAL	80,265.8	9,791.3	90,057.1	—	—	—	296.6
WET FISH	235,374.6	45,963.5	28,338.1	111.3	439.7	1,195.2	400.0
SHELLFISH							
Brown shrimps	—	—	—	—	—	—	—
Whelks	438.5	1.1	439.6	—	—	—	—
Periwinkles	78.1	497.3	575.5	—	—	—	—
Edible crabs	1,605.3	873.8	2,479.0	—	—	—	—
Lobsters	154.8	143.3	298.1	—	—	—	—
Oysters	—	—	—	—	—	—	—
Pink shrimps	682.3	92.2	774.5	—	—	—	—
Crawfish	0.2	—	0.2	—	—	—	—
Cockles	4.1	—	4.1	—	—	—	—
Scallops	1,102.3	1.8	1,104.1	—	—	—	—
Mussels	354.5	27.0	381.5	—	—	—	—
Norway lobsters	3,452.6	1,851.0	5,303.6	—	—	—	—
Squids	98.3	10.6	109.0	—	—	—	—
Queen scallops	149.3	0.6	149.9	—	—	—	—
Velvet crabs	126.3	—	126.3	—	—	—	—
Squat lobsters	—	—	—	—	—	—	—
Other shellfish	62.0	6.4	68.5	—	—	—	—
TOTAL	8,308.7	3,505.0	11,813.7	—	—	—	—
TOTAL OF ALL FISH	243,683.2	49,468.5	293,151.8	111.3	439.7	1,195.2	400.0

*There is a small discrepancy in fishing effort between tables 10, 13 and 14

LANDINGS IN SCOTLAND BY UNITED KINGDOM VESSELS FROM SPECIFIED ICES AREAS TABLE 13—continued

West of Scotland (ICES Area) (VIa)	Rockall (ICES Area) (VIb)	Total West of Scotland (ICES Areas) (VIa and VIb)	Irish Sea (ICES Area) (VIIa)	West of Ireland (ICES Area) (VIIb)	Porcupine Bank (ICES Area) (VIIc)	Great Sole Bank (ICES Area) (VIIf)	West of Great Sole Bank (ICES Area) (VIIf)	
102,593	271	102,864	4,102	1	4	1	1	(a) Fishing effort
1,066,805	19,520	1,086,325	37,735	32	279	—	109	Arrivals
133,803	1,949	135,752	6,422	6	25	5	19	Hours fishing
								Days absent
34,059	4,265	38,324	1,986	14	254	1	17	(b) Value of catch (£'000)
20,218	—	20,218	2	—	13	—	—	Demersal
36,004	815	36,819	3,113	—	+	—	—	Pelagic
90,281	5,079	95,360	5,102	14	267	1	17	Shellfish
								Total
								(c) Weight of catch (tonnes)
								DEMERSAL FISH
0.4	15.3	15.7	—	—	—	—	—	Blue ling
8.8	0.1	8.9	12.2	—	—	—	—	Brill
33.2	10.8	44.0	—	—	0.1	—	—	Catfish
9,523.1	240.4	9,763.5	490.4	1.9	11.8	—	—	Cod
104.6	0.7	105.3	34.0	—	—	—	—	Conger eels
181.4	1.6	183.0	9.8	0.3	—	—	—	Dabs
2,870.1	11.4	2,881.5	241.2	—	—	—	—	Dogfish
15.5	0.2	15.7	60.1	—	—	—	—	Dover sole
8.9	0.2	9.1	0.5	—	—	—	—	Flounders
—	—	—	—	—	—	—	—	Greenland halibut
55.3	2.5	57.8	3.9	—	—	—	—	Gurnards
15,950.1	5,358.3	21,308.4	134.7	14.6	49.8	—	—	Haddock
1,065.6	3.5	1,069.1	187.4	—	1.6	—	4.7	Hake
25.7	15.0	40.7	0.2	—	0.1	—	—	Halibut
211.2	14.1	225.3	9.5	0.2	0.1	—	—	Lemon sole
488.9	141.7	630.6	10.8	—	1.7	0.4	1.4	Ling
201.9	4.2	206.1	27.7	—	0.5	—	—	Lythe
942.7	165.7	1,108.4	3.2	0.3	0.3	—	—	Megrimms
1,380.6	230.8	1,611.4	34.9	0.2	1.1	—	—	Monks
553.5	—	553.5	—	—	—	—	—	Norway pout
1,073.0	7.2	1,080.2	226.8	0.2	—	—	—	Plaice
0.2	—	0.2	—	—	—	—	—	Roundnose grenadier
1.5	14.9	16.4	0.2	—	—	—	—	Redfish
2,353.7	374.0	2,727.7	172.8	2.0	354.2	—	—	Saithe
14,479.2	—	14,479.2	—	—	—	—	—	Sandeels
1,870.5	59.9	1,930.4	284.2	0.2	0.1	—	—	Skate
6.5	15.3	21.8	—	—	0.1	—	—	Tusk
37.3	5.9	43.2	4.3	—	—	—	—	Turbot
6,905.2	95.8	7,001.0	248.5	1.9	2.5	—	—	Whiting
681.2	4.6	685.8	7.3	—	—	—	—	Witches
—	—	—	—	—	—	—	—	Livers
78.8	14.0	92.8	5.6	—	8.3	—	—	Roes
17.3	12.0	29.3	4.2	—	0.1	—	0.2	Other demersal
61,125.7	6,820.3	67,946.0	2,214.5	21.9	432.3	0.4	6.3	TOTAL
								PELAGIC FISH
26,729.7	—	26,729.7	3.3	—	—	—	—	Herring
1,027.4	—	1,027.4	1.8	—	—	—	—	Horse mackerel
150,155.2	—	150,155.2	6.4	—	—	—	—	Mackerel
2,873.1	—	2,873.1	—	—	436.6	—	—	Blue whiting
582.1	—	582.1	—	—	—	—	—	Sprats
—	—	—	—	—	—	—	—	Other pelagic
181,367.6	—	181,367.6	11.4	—	436.6	—	—	TOTAL
242,493.3	6,820.3	249,313.6	2,225.9	21.9	868.9	0.4	6.3	WET FISH
								SHELLFISH
0.1	—	0.1	27.6	—	—	—	—	Brown shrimps
74.8	—	74.8	67.0	—	—	—	—	Whelks
1,438.5	—	1,438.5	43.5	—	—	—	—	Periwinkles
2,713.7	—	2,713.7	14.3	—	—	—	—	Edible crabs
303.2	—	303.2	2.5	—	—	—	—	Lobsters
—	—	—	—	—	—	—	—	Oysters
—	—	—	—	—	—	—	—	Pink shrimps
13.2	—	13.2	—	—	—	—	—	Crawfish
23.0	—	23.0	209.5	—	—	—	—	Cockles
3,238.2	—	3,238.2	415.8	—	—	—	—	Scallops
2.3	—	2.3	—	—	—	—	—	Mussels
11,203.4	—	11,203.4	29.2	—	—	—	—	Norway lobsters
123.8	470.4	594.2	9.2	—	—	—	—	Squids
485.4	—	485.4	4,760.9	—	—	—	—	Queen scallops
1,200.4	—	1,200.4	—	—	—	—	—	Velvet crabs
0.7	—	0.7	—	—	—	—	—	Squat lobsters
256.5	—	256.5	—	—	—	—	—	Other shellfish
21,077.2	470.4	21,547.6	5,579.6	—	—	—	—	TOTAL
263,570.5	7,290.8	270,861.3	7,805.5	21.9	868.9	0.4	6.3	TOTAL OF ALL FISH

LANDINGS IN SCOTLAND BY UNITED KINGDOM VESSELS FROM SPECIFIED ICES AREAS TABLE 14
FISHING EFFORT, VALUE BY SPECIES GROUP, WEIGHT BY INDIVIDUAL SPECIES BY MAIN FISHING METHODS

	TOTAL NORTH SEA (ICES AREAS IVa, b and c)					
	Motor Trawl	Light Trawl	Nephrop Trawl	Seine Net	Other+ Methods	All Methods
(a) Fishing effort*						
Arrivals	355	13,953	13,468	12,263	58,673	98,712
Hours fishing	27,208	351,112	183,010	418,589	487,298	1,467,217
Days absent	2,263	28,144	17,716	45,430	75,604	169,157
(b) Value of catch (£'000)						
Demersal	5,743	31,132	2,015	68,006	37,699	144,596
Pelagic	+	2	+	3	10,756	10,761
Shellfish	24	1,386	8,065	38	6,622	16,135
Total	5,767	32,520	10,080	68,047	55,078	171,492
(c) Weight of catch (tonnes)						
DEMERSAL FISH						
Blue ling	1.0	-	-	-	-	1.0
Brill	0.2	2.2	0.7	1.0	0.8	4.8
Catfish	12.9	190.1	22.9	645.1	111.4	982.4
Cod	905.8	8,447.5	425.2	19,235.5	13,304.4	42,318.5
Conger eels	1.9	5.2	1.2	2.1	0.5	10.9
Dabs	18.0	329.3	84.5	446.6	190.4	1,068.8
Dogfish	239.1	968.3	49.7	946.9	542.5	2,746.5
Dover sole	-	0.7	0.1	0.9	1.8	3.5
Flounders	-	6.3	0.1	5.4	6.5	18.3
Greenland halibut	-	-	-	-	-	-
Gurnards	5.6	4.1	-	3.0	5.2	18.0
Haddock	3,301.0	11,376.8	257.4	36,859.8	20,620.5	72,415.6
Hake	9.1	90.1	5.6	217.9	77.9	400.6
Halibut	5.4	13.6	1.8	40.6	11.4	72.8
Lemon sole	43.9	727.9	89.8	897.3	450.7	2,209.6
Ling	122.8	1,019.5	27.9	754.8	356.8	2,281.9
Lythe	13.9	71.9	0.2	64.3	78.4	228.7
Megrimms	74.5	612.9	45.1	668.0	56.6	1,457.0
Monks	216.5	2,651.2	380.5	1,243.7	420.8	4,912.8
Norway pout	-	-	-	0.3	0.3	0.6
Plaice	129.1	1,467.1	162.7	2,330.2	1,276.3	5,365.3
Roundnose grenadier	-	-	-	0.1	-	0.1
Redfish	0.6	0.1	-	0.1	54.6	55.3
Saithe	2,092.8	1,833.9	8.0	2,738.5	3,243.1	9,916.2
Sandeels	-	-	-	-	7,224.6	7,224.6
Skate	218.9	1,013.7	47.2	400.6	595.2	2,275.5
Tusk	5.2	23.8	0.9	14.9	4.3	49.2
Turbot	5.4	37.2	6.4	32.3	41.0	122.5
Whiting	809.8	7,373.9	675.1	17,538.7	6,870.5	33,268.0
Witches	5.6	419.5	160.7	919.6	72.4	1,577.8
Livers	-	11.4	0.2	0.2	0.2	12.0
Roes	7.7	33.3	0.6	75.8	32.9	150.3
Other demersal	3.5	33.1	1.5	33.4	40.8	112.2
TOTAL	8,250.0	38,764.6	2,456.2	86,117.5	55,692.7	191,281.0
PELAGIC FISH						
Herring	-	2.8	0.2	0.4	69,566.0	69,569.3
Horse mackerel	-	-	-	0.4	437.9	438.3
Mackerel	3.2	5.8	0.1	11.2	19,875.8	19,896.1
Blue whiting	-	-	-	0.1	-	0.1
Sprats	-	-	-	-	153.4	153.4
Other pelagic	-	-	-	-	-	-
TOTAL	3.2	8.6	0.3	12.1	90,033.0	90,057.1
WET FISH	8,253.2	38,773.1	2,456.5	86,129.6	145,725.7	281,338.1
SHELLFISH						
Brown shrimps	-	-	-	-	-	-
Whelks	-	83.0	65.5	0.4	290.6	439.6
Periwinkles	-	-	-	-	575.5	575.5
Edible crabs	-	1.2	2.5	0.3	2,475.1	2,479.0
Lobsters	-	-	0.3	-	297.8	298.1
Oysters	-	-	-	-	-	-
Pink shrimps	-	83.4	5.2	-	685.9	774.5
Crawfish	-	-	-	-	0.2	0.2
Cockles	-	1.1	0.6	1.4	1.0	4.1
Scallops	-	0.2	0.1	-	1,103.9	1,104.1
Mussels	-	-	-	-	381.5	381.5
Norway lobsters	0.2	730.5	4,526.7	4.2	41.9	5,303.6
Squids	11.6	22.5	22.0	19.2	33.7	109.0
Queen scallops	-	0.6	0.1	-	149.3	149.9
Velvet crabs	-	-	-	-	126.3	126.3
Squat lobsters	-	-	-	-	-	-
Other shellfish	-	2.4	1.7	0.1	64.2	68.5
TOTAL	11.9	924.8	4,624.5	25.7	6,226.9	11,813.7
TOTAL OF ALL FISH	8,265.0	39,697.9	7,081.0	86,155.3	151,952.6	293,151.8

*There is a small discrepancy in fishing effort between tables 10, 13 and 14.

+Other methods comprise White Fish Pair Trawl, Great Lines, Small and Hand Lines, Industrial Trawl, Single and Two Boat Pelagic Trawl, Queen Scallop Trawl, Shrimp Trawl, Purse Seine, Scallop Dredge, Ground Nets, Creel Fishing and Shell Fishing by Hand.

NORTHERN NORTH SEA (ICES AREA IVa)						
Motor Trawl	Light Trawl	Nephrop Trawl	Seine Net	Other* Methods	All Methods	
						(a) Fishing effort
282	8,235	5,225	9,640	32,718	56,100	Arrivals
24,504	275,137	114,323	337,505	208,544	960,013	Hours fishing
2,031	20,964	9,426	37,271	44,491	114,183	Days absent
						(b) Value of catch (£'000)
5,393	26,640	1,722	56,081	24,776	114,612	Demersal
+	1	-	2	9,558	9,561	Pelagic
23	1,186	5,215	36	4,800	11,259	Shellfish
5,417	27,826	6,937	56,119	39,133	135,432	Total
						(c) Weight of catch (tonnes)
						DEMERSAL FISH
1.0	-	-	-	-	1.0	Blue ling
0.2	2.0	0.7	0.9	0.4	4.1	Brill
10.0	148.0	21.2	516.2	78.7	774.0	Catfish
816.8	6,382.0	218.3	14,444.9	9,599.6	31,461.5	Cod
1.9	5.0	1.2	2.1	0.5	10.7	Conger eels
9.1	149.1	63.9	270.9	53.8	546.8	Dabs
232.6	929.9	49.3	770.6	422.2	2,404.4	Dogfish
-	0.2	-	0.9	0.2	1.4	Dover sole
-	5.9	0.1	5.0	5.9	16.8	Flounders
-	-	-	-	-	-	Greenland halibut
5.6	3.9	-	2.2	4.9	16.7	Gurnards
3,145.1	10,267.9	223.5	30,835.8	13,112.7	57,585.1	Haddock
9.0	89.4	5.5	202.6	75.4	381.9	Hake
5.2	11.6	1.6	29.3	9.8	57.6	Halibut
23.7	398.7	71.8	429.8	124.9	1,048.8	Lemon sole
121.0	997.8	27.7	731.0	339.4	2,216.9	Ling
13.9	70.4	0.2	59.9	75.9	220.5	Lythe
74.2	609.1	45.0	663.5	50.0	1,441.8	Megrimms
209.3	2,499.2	365.1	1,115.1	222.0	4,410.8	Monks
-	-	-	0.3	0.3	0.6	Norway pout
116.0	893.8	127.5	1,449.2	368.1	2,954.5	Plaice
-	-	-	0.1	-	0.1	Roundnose grenadier
0.6	0.1	-	-	54.6	55.2	Redfish
2,081.9	1,781.5	6.5	2,575.1	3,089.4	9,534.4	Saithe
-	-	-	-	7,224.6	7,224.6	Sandeels
207.7	873.9	39.6	373.1	383.5	1,877.7	Skate
5.2	22.9	0.9	14.5	4.3	47.8	Tusk
3.9	27.2	4.4	22.2	10.8	68.5	Turbot
745.7	6,943.5	646.2	16,520.2	4,277.4	29,133.0	Whiting
5.0	382.5	154.4	774.6	53.3	1,369.9	Witches
-	11.2	0.2	0.2	0.2	11.8	Livers
7.6	24.4	0.1	66.8	25.4	124.3	Roes
3.3	31.5	1.4	31.9	37.5	105.6	Other demersal
7,855.3	33,562.8	2,076.4	71,908.8	39,705.5	155,108.8	TOTAL
						PELAGIC FISH
-	2.4	-	0.4	60,252.0	60,254.8	Herring
-	-	-	0.4	437.0	437.4	Horse mackerel
3.2	2.5	-	6.4	19,556.4	19,568.4	Mackerel
-	-	-	0.1	-	0.1	Blue whiting
-	-	-	-	5.1	5.1	Sprats
-	-	-	-	-	-	Other pelagic
3.2	4.9	-	7.2	80,250.6	80,265.8	TOTAL
7,858.5	33,567.6	2,076.4	71,916.1	119,956.0	235,374.6	WET FISH
						SHELLFISH
-	-	-	-	-	-	Brown shrimps
-	82.1	65.4	0.4	290.6	438.5	Whelks
-	-	-	-	78.1	78.1	Periwinkles
-	0.9	1.5	0.3	1,602.5	1,605.3	Edible crabs
-	-	-	-	154.8	154.8	Lobsters
-	-	-	-	-	-	Oysters
-	75.6	3.7	-	603.0	682.3	Pink shrimps
-	-	-	-	0.2	0.2	Crawfish
-	1.1	0.6	1.4	1.0	4.1	Cockles
-	0.2	0.1	-	1,102.1	1,102.3	Scallops
-	-	-	-	354.5	354.5	Mussels
0.2	620.8	2,793.3	3.2	35.1	3,452.6	Norway lobsters
11.5	19.6	21.7	19.0	26.5	98.3	Squids
-	-	0.1	-	149.2	149.3	Queen scallops
-	-	-	-	126.3	126.3	Velvet crabs
-	-	-	-	-	-	Squat lobsters
-	2.3	1.7	-	57.9	62.0	Other shellfish
11.7	802.6	2,888.0	24.4	4,581.9	8,308.7	TOTAL
7,870.2	34,370.2	4,964.4	71,940.5	124,537.9	243,683.2	TOTAL OF ALL FISH

*Other methods comprise White Fish Pair Trawl, Industrial Trawl, Great Lines, Small and Hand Lines, Single and Two Boat Pelagic Trawl, Queen Scallop Trawl, Shrimp Trawl, Scallop Dredge, Ground Nets, Creel Fishing and Shell Fishing by Hand.

	MIDDLE NORTH SEA (ICES AREA IVb)					
	Motor Trawl	Light Trawl	Nephrop Trawl	Seine Net	Other+ Methods	All Methods
(a) Fishing effort						
Arrivals	73	5,718	8,243	2,623	25,955	42,612
Hours fishing	2,704	75,975	68,687	81,084	278,754	507,204
Days absent	232	7,180	8,290	8,159	31,113	54,974
(b) Value of catch (£'000)						
Demersal	350	4,492	293	11,925	12,924	29,984
Pelagic	—	1	+	1	1,198	1,200
Shellfish	+	201	2,850	2	1,823	4,876
Total	351	4,694	3,144	11,928	15,944	36,060
(c) Weight of catch (tonnes)						
DEMERSAL FISH						
Blue ling	—	—	—	—	—	—
Brill	—	0.1	—	0.1	0.4	0.7
Catfish	2.9	42.2	1.7	129.0	32.8	208.4
Cod	89.0	2,065.5	207.0	4,790.6	3,704.8	10,857.0
Conger eels	—	0.3	—	—	—	0.3
Dabs	8.9	180.2	20.6	175.7	136.7	522.0
Dogfish	6.5	38.4	0.4	176.3	120.3	341.9
Dover sole	—	0.5	0.1	0.1	1.5	2.1
Flounders	—	0.4	—	0.4	0.6	1.5
Greenland halibut	—	—	—	—	—	—
Gurnards	—	0.2	—	0.8	0.3	1.3
Haddock	155.9	1,108.9	33.9	6,024.1	7,507.8	14,830.5
Hake	0.1	0.7	0.1	15.2	2.5	18.6
Halibut	0.2	2.0	0.2	11.2	1.6	15.2
Lemon sole	20.2	329.2	18.1	467.5	325.8	1,160.7
Ling	1.8	21.7	0.2	23.8	17.4	65.0
Lythe	—	1.4	—	4.3	2.5	8.2
Megrimms	0.3	3.7	0.1	4.5	6.6	15.2
Monks	7.3	152.0	15.5	128.6	198.8	502.1
Norway pout	—	—	—	—	—	—
Plaice	13.1	573.3	35.2	881.0	908.2	2,410.7
Roundnose grenadier	—	—	—	—	—	—
Redfish	—	—	—	—	—	—
Saithe	10.9	52.4	1.5	163.3	153.7	381.9
Sandeels	—	—	—	—	—	—
Skate	11.2	139.8	7.6	27.5	211.7	397.8
Tusk	—	0.9	—	0.4	0.1	1.4
Turbot	1.6	10.0	2.1	10.1	30.2	54.0
Whiting	64.0	430.4	28.9	1,018.5	2,593.1	4,135.0
Witches	0.6	36.9	6.3	145.0	19.1	207.8
Livers	—	0.2	—	0.1	—	0.2
Roes	0.2	8.9	0.5	9.0	7.5	26.0
Other demersal	0.2	1.6	0.1	1.5	3.3	6.6
TOTAL	394.7	5,201.8	379.9	14,208.6	15,987.2	36,172.2
PELAGIC FISH						
Herring	—	0.4	0.2	—	9,314.0	9,314.5
Horse mackerel	—	—	—	—	0.9	0.9
Mackerel	—	3.3	0.1	4.9	319.4	327.6
Blue whiting	—	—	—	—	—	—
Sprats	—	—	—	—	148.2	148.2
Other pelagic	—	—	—	—	—	—
TOTAL	—	3.7	0.3	4.9	9,782.4	9,791.3
WET FISH	394.7	5,205.5	380.1	14,213.5	25,769.6	45,963.5
SHELLFISH						
Brown shrimps	—	—	—	—	—	—
Whelks	—	0.9	0.1	—	—	1.1
Periwinkles	—	—	—	—	497.3	497.3
Edible crabs	—	0.3	1.0	—	872.5	873.8
Lobsters	—	—	0.3	—	143.0	143.3
Oysters	—	—	—	—	—	—
Pink shrimps	—	7.8	1.5	—	82.9	92.2
Crawfish	—	—	—	—	—	—
Cockles	—	—	—	—	—	—
Scallops	—	—	—	—	1.8	1.8
Mussels	—	—	—	—	27.0	27.0
Norway lobsters	—	109.7	1,733.4	1.0	6.9	1,851.0
Squids	0.1	2.9	0.3	0.2	7.2	10.6
Queen scallops	—	0.6	—	—	0.1	0.6
Velvet crabs	—	—	—	—	—	—
Squat lobsters	—	—	—	—	—	—
Other shellfish	—	—	—	0.1	6.3	6.4
TOTAL	0.1	122.2	1,736.5	1.3	1,645.0	3,505.0
TOTAL OF ALL FISH	394.8	5,327.7	2,116.6	14,214.8	27,414.6	49,468.5

+Other methods comprise White Fish Pair Trawl, Small and Hand Lines, Single and Two Boat Pelagic Trawl, Purse Seine, Ground Nets, Creel Fishing and Shell Fishing by Hand.

WEST OF SCOTLAND (ICES AREA VIa)						
Motor Trawl	Light Trawl	Nephrop Trawl	Seine Net	Other+ Methods	All Methods	
175	4,842	36,618	885	60,073	102,593	(a) Fishing effort
13,232	131,680	395,388	26,394	500,111	1,066,805	Arrivals
946	10,345	41,053	2,564	78,895	133,803	Hours fishing
						Days absent
2,337	11,937	2,076	5,177	12,532	34,059	(b) Value of catch (£'000)
+	15	65	+	20,138	20,218	Demersal
18	1,167	18,009	39	16,771	36,004	Pelagic
2,356	13,119	20,150	5,216	49,441	90,281	Shellfish
						Total
						(c) Weight of catch (tonnes)
						DEMERSAL FISH
0.2	—	—	—	0.2	0.4	Blue ling
0.1	4.8	2.9	0.7	0.3	8.8	Brill
1.1	3.6	0.5	23.8	4.2	33.2	Catfish
343.6	2,268.6	367.7	1,660.1	4,883.0	9,523.1	Cod
6.9	75.8	18.4	1.3	2.2	104.6	Conger eels
6.3	63.4	61.5	28.3	21.9	181.4	Dabs
141.3	1,227.1	369.2	551.5	580.9	2,870.1	Dogfish
0.1	8.5	4.9	1.5	0.4	15.5	Dover sole
—	2.3	6.4	0.3	—	8.9	Flounders
—	—	—	—	—	—	Greenland halibut
11.2	25.2	0.8	2.6	15.4	55.3	Gurnards
1,582.9	5,177.7	340.7	1,859.2	6,989.6	15,950.1	Haddock
21.3	433.5	285.9	261.9	62.9	1,065.6	Hake
2.0	9.6	2.6	2.3	9.2	25.7	Halibut
12.0	86.1	44.3	43.0	25.8	211.2	Lemon sole
53.1	192.8	33.8	29.0	180.2	488.9	Ling
25.4	71.6	26.6	6.8	71.5	201.9	Lythe
52.2	561.7	124.3	172.6	32.0	942.7	Megrim
124.3	839.0	262.2	78.5	76.6	1,380.6	Monks
—	—	2.3	—	551.2	553.5	Norway pout
59.3	545.5	77.6	254.4	136.2	1,073.0	Plaice
—	—	—	0.1	0.2	0.2	Roundnose grenadier
0.1	0.5	0.5	—	0.4	1.5	Redfish
147.3	687.4	103.5	199.2	1,216.3	2,353.7	Saithe
—	—	—	—	14,479.2	14,479.2	Sandeels
110.0	930.9	255.5	275.5	298.6	1,870.5	Skate
1.1	2.4	—	0.2	2.8	6.5	Tusk
3.2	18.8	5.7	5.8	3.8	37.3	Turbot
337.1	1,973.0	813.5	1,539.2	2,242.3	6,905.2	Whiting
5.7	338.0	260.4	64.9	12.2	681.2	Witches
—	—	—	—	—	—	Livers
6.2	42.2	1.9	6.5	22.0	78.8	Roes
0.6	9.5	3.6	1.6	2.1	17.3	Other demersal
3,054.6	15,599.5	3,477.1	7,070.8	31,923.6	61,125.7	TOTAL
						PELAGIC FISH
0.1	44.2	261.2	0.9	26,423.3	26,729.7	Herring
—	0.1	0.2	0.1	1,027.0	1,027.4	Horse mackerel
—	6.8	36.0	0.5	150,111.9	150,155.2	Mackerel
—	—	—	—	2,873.1	2,873.1	Blue whiting
—	—	—	—	582.1	582.1	Sprats
—	—	—	—	—	—	Other pelagic
0.1	51.1	297.4	1.4	181,017.5	181,367.6	TOTAL
3,054.8	15,650.6	3,774.6	7,072.2	212,941.1	242,493.3	WET FISH
						SHELLFISH
—	—	0.1	—	—	0.1	Brown shrimps
—	0.5	2.9	—	71.4	74.8	Whelks
—	—	—	—	1,438.5	1,438.5	Periwinkles
—	3.2	1.3	—	2,709.2	2,713.7	Edible crabs
—	—	0.5	—	302.7	303.2	Lobsters
—	—	—	—	—	—	Oysters
—	—	—	—	—	—	Pink shrimps
—	—	—	—	13.2	13.2	Crawfish
—	—	0.1	—	22.9	23.0	Cockles
—	—	0.2	—	3,238.0	3,238.2	Scallops
—	—	—	—	2.3	2.3	Mussels
1.7	654.4	9,370.5	3.6	1,173.2	11,203.4	Norway lobsters
8.5	35.6	16.3	17.0	46.3	123.8	Squids
—	0.5	7.7	—	477.2	485.4	Queen scallops
—	—	—	—	1,200.4	1,200.4	Velvet crabs
—	—	0.6	—	0.1	0.7	Squat lobsters
—	—	0.1	—	256.4	256.5	Other shellfish
10.3	694.2	9,400.4	20.7	10,951.7	21,077.2	TOTAL
3,065.0	16,344.8	13,174.9	7,093.0	223,892.8	263,570.5	TOTAL OF ALL FISH

+ Other methods comprise Small and Hand Lines, Great Lines, Purse Seine, Two Boat Pelagic Trawl, White Fish Trawl, Queen Scallop Trawl, Drift Net, Scallop Dredge, Ground Nets, Creel Fishing and Shell Fishing by Hand.

BASE DISTRICT OF VESSEL BY LANDING DISTRICT

(a) Weight (tonnes)

BASE DISTRICT*	EAST COAST LANDING DISTRICTS (Eyemouth-Wick)										Total East Coast
	Eyemouth	Pittenweem	Arbroath	Aberdeen	Peterhead	Fraserburgh	Macduff	Buckie	Lossiemouth	Wick	
Eyemouth	8,398	160	—	1,668	1,510	—	—	—	4	1	11,741
Pittenweem	6	3,378	54	8,085	126	10	—	6	1	12	11,679
Arbroath	4	208	3,945	1,986	315	—	—	—	29	—	6,487
Aberdeen	3	13	10	14,037	610	29	—	24	—	151	14,877
Peterhead	—	11	7	10,184	40,759	3,845	4	2	1	—	54,814
Fraserburgh	3	36	2	3,283	29,334	18,314	10	1	22	143	51,149
Macduff	4	14	—	4,530	9,681	14,399	4,349	9	33	10	33,028
Buckie	—	23	—	2,282	14,401	598	53	3,137	1	284	20,780
Lossiemouth	—	—	—	2,409	16,232	540	26	109	1,246	260	20,823
Wick	6	—	—	427	748	—	2	256	281	4,858	6,580
Orkney	—	—	—	2,978	1,023	28	—	37	18	657	4,741
Shetland	—	—	—	271	—	—	—	—	—	—	271
Stornoway	5	—	—	—	454	—	—	—	—	—	459
Kinlochbervie	—	—	—	—	—	—	—	—	—	—	—
Lochinver	—	1	—	—	508	—	3	3	56	28	598
Ullapool	—	—	—	—	—	—	—	6	—	—	6
Mallaig	—	—	—	—	36	903	—	—	2	—	942
Oban	—	—	—	—	—	—	—	3	—	—	3
Campbeltown	—	1	11	1	262	3	6	—	—	—	285
Ayr	33	96	—	19	22	31	—	—	1	17	220
ALL DISTRICTS	8,462	3,943	4,031	52,164	116,021	38,701	4,453	3,592	1,696	6,421	239,484

BASE DISTRICT*	WEST COAST LANDING DISTRICTS (Stornoway-Ayr)									ALL SCOTTISH VESSELS*		
	Orkney	Shetland	Stornoway	Kinlochbervie	Lochinver	Ullapool	Mallaig	Oban	Campbeltown	Total West Coast	Total Landings	
Eyemouth	—	2	—	122	—	—	22	18	—	56	219	11,963
Pittenweem	—	171	2	—	—	5	60	90	3	39	201	12,051
Arbroath	—	15	—	20	—	5	4	7	—	—	37	6,538
Aberdeen	3	6	—	1,075	6	—	14	—	—	—	1,095	15,982
Peterhead	—	2,854	396	499	338	17,639	263	31	—	—	19,164	76,832
Fraserburgh	—	19,856	3,935	485	192	43,576	999	116	5	228	49,535	120,540
Macduff	7	11,116	610	8,979	89	25,448	1,185	14	—	-5	36,329	80,481
Buckie	30	33	10	3,938	2,833	67	731	—	—	—	7,578	28,421
Lossiemouth	—	182	22	2,310	2,739	295	3,223	716	5	85	9,397	30,402
Wick	—	—	—	529	38	—	21	11	—	—	600	7,180
Orkney	5,087	2,487	2,579	—	96	6,139	304	—	—	—	9,120	21,434
Shetland	31	31,760	231	—	102	40,928	14	—	—	13	41,287	73,348
Stornoway	—	—	17,173	—	114	26	598	—	1	—	17,914	18,373
Kinlochbervie	—	—	—	1,179	12	—	89	164	—	45	1,490	1,490
Lochinver	—	5	1	396	2,021	—	17	—	—	—	2,435	3,039
Ullapool	—	—	—	—	128	690	18	—	—	—	837	843
Mallaig	—	1,977	2,562	1	34	4,075	5,124	19	—	3	11,818	14,737
Oban	—	—	3	—	5	2	21	2,612	—	32	2,675	2,678
Campbeltown	—	—	13	—	31	6	219	101	4,873	230	5,475	5,760
Ayr	—	10	23	18	1	10	327	31	93	13,482	13,987	14,216
ALL DISTRICTS	5,158	70,473	27,561	19,553	8,776	138,912	13,256	3,931	4,982	14,221	231,190	546,305

*Landings of 172 tonnes by vessels not allocated to Scottish base district at the time of landings are excluded.

BASE DISTRICT OF VESSEL BY LANDING DISTRICT

(b) Value (£'000)

BASE DISTRICT*	EAST COAST LANDING DISTRICTS (Eyemouth-Wick)										Total East Coast
	Eye-mouth	Pitten-weem	Arbroath	Aberdeen	Peterhead	Fraserburgh	Macduff	Buckie	Lossiemouth	Wick	
Eyemouth	8,140	122	—	1,465	1,157	—	—	—	7	1	10,894
Pittenweem	6	3,196	43	6,908	97	9	—	7	3	11	10,279
Arbroath	4	238	3,185	1,802	235	—	—	—	38	—	5,504
Aberdeen	6	17	10	10,393	523	34	—	30	—	110	11,125
Peterhead	1	13	7	1,737	28,124	873	5	4	2	—	30,762
Fraserburgh	4	39	1	2,553	15,239	6,795	6	1	31	34	24,704
Macduff	7	17	—	1,339	5,444	5,260	3,191	12	49	9	15,329
Buckie	—	21	—	2,025	11,526	676	36	4,095	1	243	18,624
Lossiemouth	—	—	—	2,165	13,006	264	16	118	1,156	357	17,080
Wick	6	—	—	315	528	—	1	197	324	3,399	4,771
Orkney	—	—	—	1,727	383	25	—	39	29	503	2,707
Shetland	—	—	—	180	—	—	—	—	—	—	180
Stornoway	9	—	—	—	48	—	—	—	—	—	57
Kinlochbervie	—	—	—	—	—	—	—	—	—	—	—
Lochinver	—	2	—	—	342	—	—	2	4	78	446
Ullapool	—	—	—	—	—	—	—	9	—	—	9
Mallaig	—	—	—	—	4	64	—	—	3	—	72
Oban	—	—	—	—	—	—	—	1	—	—	1
Campbeltown	—	2	12	1	153	2	4	—	—	—	174
Ayr	65	79	—	14	11	22	—	—	1	14	206
ALL DISTRICTS	8,247	3,747	3,259	32,626	76,820	14,024	3,261	4,518	1,723	4,701	152,926

BASE DISTRICT*	WEST COAST LANDING DISTRICTS (Stornoway-Ayr)									ALL SCOTTISH VESSELS*		
	Orkney	Shetland	Stornoway	Kinlochbervie	Lochinver	Ullapool	Mallaig	Oban	Campbeltown	Total West Coast	Total Landings	
Eyemouth	—	2	—	89	—	—	35	26	—	126	278	11,173
Pittenweem	—	112	4	—	—	13	89	116	4	90	315	10,705
Arbroath	—	9	—	12	—	7	8	10	—	—	37	5,550
Aberdeen	2	3	—	685	4	—	14	—	—	—	704	11,833
Peterhead	—	477	46	335	235	2,516	312	26	—	—	3,471	34,710
Fraserburgh	—	2,653	217	331	172	4,965	953	128	9	130	6,906	34,261
Macduff	6	1,341	40	6,313	65	2,918	1,121	20	—	6	10,484	27,159
Buckie	26	20	16	2,924	2,833	103	641	—	—	—	6,518	25,188
Lossiemouth	—	119	34	1,614	2,243	431	2,608	503	4	73	7,510	24,709
Wick	—	—	—	374	62	—	30	12	—	—	477	5,248
Orkney	4,110	311	78	—	97	680	245	—	—	—	1,100	8,230
Shetland	30	13,645	30	—	169	4,629	9	—	—	28	4,866	18,721
Stornoway	—	—	7,887	—	88	3	450	—	1	—	8,432	8,489
Kinlochbervie	—	—	—	997	8	—	65	102	—	38	1,210	1,210
Lochinver	—	2	3	305	2,086	—	12	—	—	—	2,406	2,853
Ullapool	—	—	—	—	225	1,490	37	—	—	—	1,751	1,760
Mallaig	—	160	236	1	31	489	7,251	26	—	4	8,038	8,271
Oban	—	—	5	—	6	3	31	4,078	1	42	4,165	4,166
Campbeltown	—	—	18	—	18	14	294	120	6,697	364	7,526	7,700
Ayr	—	5	36	13	—	14	368	27	88	9,007	9,552	9,763
ALL DISTRICTS	4,174	18,858	8,893	13,749	8,340	18,276	14,575	5,192	6,804	9,913	85,744	261,702

*Value of landings (£272,000) by vessels not allocated to a Scottish base district at the time of landings are excluded.

England & Wales	WEIGHT (TONNES)				VALUE (£'000)			
	Demersal	Pelagic	Shellfish	Total	Demersal	Pelagic	Shellfish	Total
North Shields	3,216	250	165	3,631	2,856	15	264	3,135
Hull	78	-	-	78	52	-	-	52
Grimsby	673	-	-	673	463	-	+	463
Plymouth	13	5,175	-	5,188	+	380	-	381
River Fal	-	8,494	-	8,494	-	868	-	868
Other Ports	2,643	614	1,011	4,271	2,323	35	777	3,135
All vessels, all ports	6,623	14,533	1,176	22,335	5,695	1,298	1,040	8,034

*Provisional

LANDINGS* BY SCOTTISH VESSELS IN ENGLAND AND WALES
BY SPECIES

TABLE 17

	Weight (Tonnes)					Value (£'000)				
	1983	1984	1985	1986	1987	1983	1984	1985	1986	1987
Cod	4,638	2,103	2,248	1,841	2,687	2,803	1,534	1,791	1,586	2,489
Haddock	3,471	2,130	3,782	2,218	1,932	1,691	1,281	2,010	1,546	1,734
Lemon sole	164	125	194	151	114	129	120	191	224	181
Plaice	211	294	316	423	276	136	197	205	293	196
Whiting	504	634	739	588	951	176	258	281	283	528
Herring	101	937	4,553	1,056	259	20	60	351	41	16
Horse mackerel	801	95	1	3	1	51	8	0	1	+
Mackerel	39,037	23,122	475	3	13,640	3,102	2,111	25	1	1,222
Sprats	95	-	222	119	53	8	-	7	4	5
Pilchards	6,903	1,235	1,020	-	575	415	132	79	-	53
Norway lobsters	900	435	403	381	397	1,023	491	506	588	665
Queen scallops	1,965	860	326	765	671	422	235	93	258	283
Other species	404	376	690	898	779	285	235	486	984	661
Total	59,194	32,346	14,969	8,446	22,335	10,261	6,663	6,024	5,808	8,034

*Provisional

LANDINGS BY SCOTTISH VESSELS AND UNITED KINGDOM VESSELS IN UNITED KINGDOM

TABLE 18

	Weight (Thou Tonnes)					Value (£ million)				
	1983	1984	1985	1986	1987	1983	1984	1985	1986	1987
Scottish vessels										
Scotland	469.9	514.2	558.9	528.9	546.5	164.8	188.5	207.2	227.8	262.0
England and Wales	59.2	32.3	15.0	8.4	22.3	10.3	6.7	6.0	5.8	8.0
Northern Ireland	0.2	1.3	0.2	0.1	0.3	0.0	0.1	0.0	0.1	0.2
UK	529.4	547.8	574.1	537.5	569.1	175.1	195.3	213.2	233.7	270.2
UK vessels										
Scotland	499.1	543.3	592.6	551.3	574.9	170.2	193.9	215.1	234.5	273.6
England and Wales	230.5	171.8	146.9	145.9	193.8	101.8	96.3	98.5	114.6	146.3
Northern Ireland	18.8	18.5	21.3	21.2	21.3	8.5	7.6	10.1	13.3	15.0
UK	748.4	733.7	760.7	718.5	789.9	280.5	297.9	323.6	362.4	434.9
Scottish vessels as % of UK vessels	70.7	74.7	75.5	74.8	72.1	62.4	65.6	65.9	64.5	62.1

Landings into England and Wales: 1987 figures are provisional

LANDINGS BY UNITED KINGDOM VESSELS IN ISLE OF MAN

TABLE 19

	Weight (Tonnes)					Value (£'000)				
	1983	1984	1985	1986	1987	1983	1984	1985	1986	1987
Demersal	439	439	339	219	..	174	201	170	131	..
Pelagic	798	1,107	857	800	..	171	215	160	126	..
Shellfish	7,064	6,070	5,723	4,710	..	2,433	2,559	2,774	2,617	..
Total	8,301	7,617	6,920	5,730	..	2,778	2,975	3,105	2,873	3,387

Note: Separate information on landings by Scottish vessels in Isle of Man not available.

NATIONALITY BY LENGTH GROUP

Nationality	Tonnes						£'000					
	Under 40ft	40ft-59.9ft	60ft-79.9ft	80ft-109.9ft	110ft+	Total	Under 40ft	40ft-59.9ft	60ft-79.9ft	80ft-109.9ft	110ft+	Total
Landings by Scottish Vessels												
Demersal	7.254	47.011	174.417	14.472	10.438	253.593	2.865	34.413	126.558	8.803	5.096	177.736
Pelagic	82	2.559	19.335	53.571	178.961	254.508	18	425	2.182	6.211	20.157	28.993
Shellfish	14.272	11.306	4.257	9	8.532	38.377	22.406	18.754	7.364	14	6.708	55.245
Total All Fish	21.608	60.876	198.009	68.054	197.931	546.478	25,289	53.592	136.104	15.029	31.961	261,974
Landings by England and Wales Vessels												
Demersal	43	1.600	4.063	1.432	2.382	9.519	31	1.339	3.733	1.331	1.719	8.153
Pelagic	1	21	23	8.102	+	8,148	+	4	5	940	+	950
Shellfish	95	273	82	11	36	497	158	391	117	12	47	726
Total All Fish	139	1.894	4.168	9,544	2,418	18,165	189	1.734	3.855	2,284	1.766	9.829
Landings by Northern Ireland Vessels												
Demersal	+	21	477	90	17	605	+	14	467	68	19	567
Pelagic	-	1	-	9,513	-	9,513	-	+	-	1,092	-	1,092
Shellfish	+	25	42	-	+	67	+	29	66	-	+	95
Total All Fish	+	46	519	9,603	17	10,185	+	43	533	1,160	19	1,755
Landings by Other UK Vessels												
Demersal	-	-	35	-	-	35	-	-	17	-	-	17
Pelagic	-	-	-	-	-	-	-	-	-	-	-	-
Shellfish	-	-	+	-	-	+	-	-	+	-	-	+
Total All Fish	-	-	35	-	-	35	-	-	17	-	-	17
All Landings in Scotland												
Demersal	7.297	48.631	178,992	15,994	12,837	263,752	2,896	35,766	130,774	10,202	6,833	186,472
Pelagic	83	2,581	19,358	71,186	178,961	272,169	18	429	2,187	8,244	20,157	31,036
Shellfish	14,367	11,604	4,381	21	8,568	38,941	22,564	19,173	7,547	26	6,755	56,067
Total All Fish	21,747	62,816	202,730	87,201	200,366	574,862	25,478	55,369	140,509	18,473	33,745	273,575

LANDINGS BY UK VESSELS IN SCOTLAND

TABLE 21

METHOD OF FISHING BY LENGTH GROUP

Method of Fishing	Tonnes						£'000					
	Under 40ft	40ft-59.9ft	60ft-79.9ft	80ft-109.9ft	110ft+	Total	Under 40ft	40ft-59.9ft	60ft-79.9ft	80ft-109.9ft	110ft+	Total
Demersal trawl	2,073	21,428	39,917	5,358	9,208	77,985	1,673	18,132	31,141	4,031	6,567	61,545
Demersal pair trawl	11	15,227	43,517	4,818	8	63,580	7	11,373	31,891	3,766	11	47,048
Industrial trawl	3,652	2,115	9,674	3,550	3,326	22,317	113	63	278	108	101	663
Seine net	244	7,318	84,820	1,415	-	93,797	181	5,348	66,958	1,154	-	73,641
Lines	273	106	10	7	261	658	200	89	26	18	192	524
Beam trawl	-	-	582	875	-	1,457	-	-	722	1,151	-	1,873
Demersal gill nets	551	23	16	-	43	632	473	21	13	-	40	546
Other demersal nets	11	-	-	-	48	59	43	-	-	-	21	64
Purse seine	-	-	672	60,695	157,159	218,526	-	-	74	7,045	18,123	25,241
Pelagic trawl	49	2,216	18,170	10,483	21,798	52,716	11	359	2,008	1,198	2,034	5,609
Pelagic gill nets	2	-	-	-	-	2	1	-	-	-	-	1
Pelagic ring net	-	-	-	-	-	-	-	-	-	-	-	-
Nephrop trawl	4,018	11,934	4,329	1	9	20,291	7,277	16,977	5,988	1	23	30,266
Shrimp trawl	48	359	495	-	-	901	59	404	622	-	-	1,086
Queen scallop trawl	283	158	39	-	100	580	141	78	18	-	47	284
Scallop dredging	1,157	1,667	467	-	5,780	9,070	1,646	2,461	712	-	3,941	8,761
Creel fishing	7,601	30	23	-	1,379	9,034	12,438	31	59	-	2,131	14,660
Shellfishing by hand	1,774	236	-	-	1,247	3,257	1,217	33	-	-	516	1,765
Total	21,747	62,816	202,730	87,201	200,366	574,862	25,478	55,369	140,509	18,473	33,745	273,575

WEIGHT AND VALUE BY CREEK

DISTRICT AND CREEK	WEIGHT (TONNES)				VALUE (£'000)			
	Demersal	Pelagic	Shellfish	All Fish	Demersal	Pelagic	Shellfish	All Fish
ALL DISTRICTS	263.752	272.169	38,941	574.862	186,471.8	31,035.6	56,067.3	273,574.7
EYEMOUTH DISTRICT	6,694	10	1,806	8,510	5,776.3	2.3	2,520.0	8,298.6
Burnmouth	+	-	47	47	+	-	63.4	63.4
Eyemouth	6,303	10	497	6,810	5,465.2	2.2	660.8	6,128.2
St Abbs	7	-	94	101	6.0	-	140.6	146.6
Cove	1	-	37	38	0.5	-	42.3	42.8
Dunbar	290	+	482	772	234.2	0.1	549.8	784.0
North Berwick	+	-	65	65	+	-	60.4	60.4
Port Seton	81	-	511	592	57.9	-	921.3	979.2
Granton	12	-	73	85	12.6	-	81.5	94.1
PITTENWEEM DISTRICT	2,791	68	1,185	4,044	2,251.0	11.5	1,593.7	3,856.1
Burntisland	+	-	1	1	0.2	-	3.8	4.0
Methil and Leven	11	-	42	53	7.0	-	57.8	64.8
St Monans	2	-	56	59	1.9	-	53.0	54.9
Pittenweem	2,674	67	704	3,444	2,140.1	11.2	1,033.5	3,184.8
Anstruther	67	2	138	206	64.8	0.3	164.4	229.4
Crail	23	-	172	196	22.1	-	168.4	190.5
St Andrews	15	-	71	86	15.1	-	112.66	127.7
ARBROATH DISTRICT	3,443	190	398	4,031	2,559.7	35.8	662.6	3,258.1
Arbroath	2,623	55	312	2,991	1,901.9	8.7	538.9	2,449.6
Montrose	327	133	38	498	271.3	26.9	41.0	339.2
Johnshaven	49	-	21	69	35.9	-	47.1	83.1
Gourdon	445	1	27	473	350.6	0.2	35.4	386.2
ABERDEEN DISTRICT	39,336	14,333	101	53,771	32,200.1	1,981.1	169.7	34,350.9
Catterline	-	-	7	7	-	-	6.7	6.7
Stonehaven	201	+	2	203	175.8	+	1.3	177.0
Aberdeen	39,135	14,333	92	53,561	32,024.3	1,981.1	161.6	34,167.1
PETERHEAD DISTRICT	95,478	20,727	786	116,991	74,044.1	2,361.1	1,106.4	77,511.7
Port Errol	39	-	-	39	27.6	-	-	27.6
Boddam	10	+	21	32	8.8	+	10.8	19.7
Peterhead	95,429	20,727	765	116,920	74,007.7	2,361.1	1,095.6	77,464.4
FRASERBURGH DISTRICT	10,929	26,846	1,697	39,473	8,411.3	2,906.2	2,881.7	14,199.2
Fraserburgh	10,929	26,846	1,670	39,445	8,411.0	2,906.2	2,861.6	14,178.8
Sandhaven and Pitullie	+	-	20	21	0.3	-	14.4	14.6
Roseheartly	-	-	4	4	-	-	3.0	3.0
Pennan	-	-	3	3	-	-	2.8	2.8
MACDUFF DISTRICT	4,358	1	156	4,515	3,146.1	0.2	175.7	3,322.0
Gardenstown	-	-	17	17	-	-	12.0	12.0
Macduff	2,954	+	91	3,045	1,978.2	0.1	128.5	2,106.8
Whitehills	1,405	+	48	1,453	1,167.9	+	35.2	1,203.2
Portsoy	-	-	-	-	-	-	-	-
BUCKIE DISTRICT	1,877	1	1,753	3,631	1,641.3	+	2,908.4	4,549.8
Portknockie	-	-	+	+	-	-	0.3	0.3
Findochty	-	-	+	+	-	-	0.4	0.4
Buckie	1,877	1	1,753	3,631	1,641.3	+	2,907.7	4,549.1

WEIGHT AND VALUE BY CREEK

DISTRICT AND CREEK	WEIGHT (TONNES)				VALUE (£'000)			
	Demersal	Pelagic	Shellfish	All Fish	Demersal	Pelagic	Shellfish	All Fish
LOSSIEMOUTH DISTRICT	880	—	1,188	2,068	662.2	—	1,291.7	1,953.9
Lossiemouth	454	—	488	943	396.1	—	725.8	1,122.0
Hopeman	—	—	—	—	—	—	—	—
Burghead	69	—	299	368	56.7	—	439.2	495.9
Inverness	—	—	—	—	—	—	—	—
Avoch	1	—	31	31	0.3	—	45.8	46.1
Portmahomack	356	—	371	727	209.1	—	80.8	289.9
WICK DISTRICT	9,561	128	825	10,514	7,227.4	16.6	980.4	8,224.4
Brora	—	—	9	9	—	—	17.2	17.2
Helmsdale	2	—	29	31	1.4	—	46.1	47.5
Dunbeath	—	—	12	12	—	—	12.6	12.6
Lybster	326	—	67	392	189.5	—	51.0	240.6
Wick	2,286	—	278	2,564	1,448.0	—	339.3	1,787.3
Keiss	—	—	103	103	—	—	66.1	66.1
John O'Groats	—	—	62	62	—	—	74.9	74.9
Scrabster	6,948	128	255	7,330	5,588.4	16.6	349.1	5,954.2
Portskerra	—	—	11	11	—	—	24.0	24.0
ORKNEY DISTRICT	3,970	—	1,188	5,157	2,723.8	—	1,450.1	4,173.9
Sanday	—	—	54	54	—	—	151.3	151.3
Westray	—	—	219	219	—	—	261.1	261.1
Stronsay	—	—	73	73	—	—	107.4	107.4
Rousay	—	—	218	218	—	—	145.1	145.1
Kirkwall	3,523	—	205	3,728	2,393.2	—	247.2	2,640.4
Stromness	447	—	271	718	330.6	—	330.4	661.1
South Ronaldsay	—	—	60	60	—	—	116.2	116.2
Hoy	—	—	88	88	—	—	91.4	91.4
SHETLAND DISTRICT	25,446	46,803	871	73,121	13,018.7	5,586.0	623.9	19,228.6
South Mainland and Fair Isle	+	—	9	10	0.1	—	5.9	6.0
Lerwick	13,909	45,868	71	59,848	6,229.4	5,472.6	32.2	11,734.2
Whalsay	75	—	34	109	56.7	—	22.5	79.3
Skerries	2	—	+	2	1.2	—	4.7	5.9
Yell and Fetlar and Unst	952	—	159	1,111	780.4	—	176.8	957.2
Central Mainland	108	5	240	353	81.8	2.3	225.9	310.0
Northmavine	257	—	51	308	187.7	—	20.9	208.6
West Mainland	157	—	165	321	110.8	—	74.7	185.4
Scalloway	9,988	930	142	11,059	5,570.5	111.1	60.3	5,741.9
STORNOWAY DISTRICT	15,294	7,891	4,571	27,755	1,139.8	379.7	7,390.3	8,909.9
Lochs	1	1	115	117	0.3	0.3	126.9	127.6
Stornoway	9,683	4,517	1,684	15,883	723.1	274.8	2,472.7	3,470.6
Portnaguran & Ness	—	—	251	251	—	—	142.1	142.1
Berneray (Lewis)	—	252	357	609	—	9.7	404.1	413.8
North Harris	2	1	339	342	1.7	0.3	683.2	685.1
Scalpay	—	—	11	11	—	—	67.7	67.7
South Harris	+	—	114	114	0.1	—	235.8	236.0
Berneray (N Uist)	—	—	20	20	—	—	52.2	52.2
North Uist	—	—	246	246	—	—	590.6	590.6
Grimsay	—	—	134	134	—	—	320.7	320.7
Benbecula	—	—	63	63	—	—	116.5	116.5
South Uist and Eriskay	2	—	273	275	1.0	—	478.1	479.0
Barra	5,606	3,120	965	9,690	413.6	94.5	1,699.7	2,207.8
KINLOCHBERVIE DISTRICT	19,330	11	228	19,570	13,567.6	1.2	434.8	14,003.6
Eriboll	2	—	56	58	1.8	—	132.2	134.0
Kinlochbervie	19,328	11	172	19,511	13,565.8	1.2	301.4	13,868.4
Scourie	—	—	+	+	—	—	1.2	1.2
LOCHINVER DISTRICT	7,297	—	1,559	8,855	5,287.6	—	3,126.9	8,414.5
Kylesku	—	—	87	87	—	—	279.3	279.3
Culkein/Drumbeg	—	—	11	11	—	—	40.2	40.2
Lochinver	7,279	—	1,461	8,757	5,287.6	—	2,807.4	8,095.0

WEIGHT AND VALUE BY CREEK

DISTRICT AND CREEK	WEIGHT (TONNES)				VALUE (£'000)			
	Demersal	Pelagic	Shellfish	All Fish	Demersal	Pelagic	Shellfish	All Fish
ULLAPOOL DISTRICT	423	151,493	1,330	153,245	271.2	17,127.5	2,586.7	19,985.5
Ullapool	259	151,493	417	152,169	176.2	17,127.5	1,061.8	18,365.4
Aultbea	—	—	95	95	—	—	161.3	161.3
Gairloch	164	+	817	981	95.1	+	1,363.7	1,458.8
MALLAIG DISTRICT	8,623	445	4,789	13,857	6,308.4	44.9	8,698.8	15,052.1
Torridon	+	—	180	181	0.3	—	474.9	475.2
Kyle	2	—	286	287	1.0	—	537.6	538.6
Sleat	—	—	37	37	—	—	37.3	37.3
Broadford	—	—	141	141	—	—	232.6	232.6
Portree	15	—	384	399	10.9	—	659.8	670.7
Snizort	3	—	331	334	2.2	—	545.9	548.1
Dunvegan	4	—	133	137	1.9	—	174.1	176.0
Bracadale	+	—	95	95	0.3	—	193.0	193.2
Strathaird	—	—	77	77	—	—	249.1	249.1
Mallaig	8,599	445	2,847	11,891	6,291.8	44.9	5,345.4	11,682.1
Arisaig	—	—	217	217	—	—	191.0	191.0
Ardnamurchan	—	—	60	60	—	—	58.2	58.2
OBAN DISTRICT	1,309	—	2,848	4,156	912.3	—	4,523.0	5,435.2
Fort William	—	—	49	49	—	—	96.3	96.3
Oban	1,281	—	1,013	2,294	890.5	—	1,813.6	2,704.0
Luig	—	—	452	452	—	—	733.1	733.1
Tobermory (Mull)	20	—	715	735	17.1	—	1,124.1	1,141.2
Loch Scridain (Mull)	8	—	477	485	4.7	—	580.2	584.9
Loch Buie (Mull)	—	—	62	62	—	—	60.0	60.0
Coll	—	—	10	10	—	—	5.4	5.4
Tiree	—	—	70	70	—	—	110.4	110.4
CAMPBELTOWN DISTRICT	549	595	3,960	5,104	386.2	105.2	6,423.0	6,914.5
West Loch Tarbert	117	3	1,758	1,878	69.5	0.7	2,926.5	2,996.7
Gigha	—	—	10	10	—	—	22.0	22.0
Port Ellen	13	—	714	727	9.2	—	1,241.3	1,250.5
Port Askaig	—	—	—	—	—	—	—	—
Bruichladdich	—	—	—	—	—	—	—	—
Jura	—	—	—	—	—	—	—	—
Colonsay	—	—	1	1	—	—	4.3	4.3
Campbeltown	288	24	746	1,057	204.1	3.8	941.1	1,149.0
Carradale	35	3	263	301	20.7	0.6	477.8	499.1
Tarbert	97	565	447	1,108	82.7	100.0	792.4	975.1
Ardrishaig	+	—	+	+	+	—	0.4	0.4
Bute	—	—	2	2	—	—	9.4	9.4
Arran	—	—	19	19	—	—	7.8	7.8
AYR DISTRICT	6,163	2,627	7,703	16,493	4,936.6	476.4	6,519.5	11,932.4
Largs & Greenock	105	5	319	430	60.7	1.1	877.6	939.4
Cumbraes	+	+	5	6	0.1	+	2.7	2.8
Troon & Saltcoats	988	140	334	1,462	805.9	22.7	511.8	1,340.4
Ayr	2,683	2,461	851	5,994	2,053.1	447.9	1,418.8	3,919.8
Dunure	9	+	25	34	4.9	0.2	15.3	20.4
Maidens	+	+	32	33	0.1	+	12.7	12.8
Girvan	617	18	575	1,209	448.8	3.9	613.2	1,065.9
Ballantrae	2	—	4	5	1.4	—	2.3	3.7
Stranraer	976	+	24	1,000	858.6	0.1	13.2	871.9
Portpatrick	173	+	8	181	153.8	0.1	11.8	165.6
Drummore	47	+	55	102	21.1	+	25.3	46.4
Whithorn	341	2	111	454	265.5	0.4	54.6	320.5
Kirkcudbright	223	+	5,331	5,554	262.1	+	2,916.4	3,178.5
Annan	1	—	29	30	0.4	—	44.0	44.4

WEIGHT AND VALUE OF EACH SPECIES LANDED

	Weight (tonnes)					Value (£'000)				
	1983	1984	1985	1986	1987	1983	1984	1985	1986	1987
DEMERSAL FISH										
Blue ling	2	-	-	-	2	1	-	-	-	1
Brill	+	2	1	+	+	+	1	1	+	+
Catfish	10	12	11	7	30	3	6	6	4	25
Cod	1,404	1,633	1,171	483	1,242	816	1,007	821	389	1,112
Conger eels	+	+	-	+	+	+	+	-	+	+
Dabs	34	30	11	5	14	6	9	3	1	4
Dogfish	15	93	27	19	62	3	21	5	11	33
Dover sole	1	6	2	+	+	2	14	6	1	+
Flounders	-	1	-	-	+	-	+	-	-	+
Gurnards	1	1	1	+	2	+	+	+	+	1
Haddock	127	190	265	278	529	64	117	155	158	398
Hake	1	14	20	12	7	1	17	22	22	10
Halibut	2	2	3	1	43	4	3	7	3	104
Lemon sole	109	121	56	15	67	80	126	66	25	93
Ling	114	127	148	42	240	50	44	64	22	144
Lythe	7	20	4	4	5	3	10	2	3	4
Megrim	+	4	10	8	18	+	3	5	8	15
Monks	109	167	128	100	168	85	164	152	159	300
Norway pout	-	3,041	-	164	1,188	-	134	-	5	36
Plaice	929	867	322	81	195	679	669	232	71	177
Redfish	+	+	1	+	11	+	+	+	+	2
Saithe	111	80	251	93	527	30	16	79	32	212
Sandeels	-	-	-	20	-	-	-	-	1	-
Skate	143	151	70	18	52	29	37	19	9	23
Tusk	63	6	27	+	88	14	2	9	+	17
Turbot	10	22	15	1	7	37	90	50	4	29
Whiting	25	57	27	22	72	6	26	10	7	37
Witches	4	2	10	21	35	1	1	5	10	23
Roes	+	-	-	+	+	+	-	-	+	+
Other demersal	1	2	+	+	8	+	1	+	+	3
TOTAL	3,222	6,651	2,581	1,394	4,613	1,914	2,516	1,717	945	2,803
PELAGIC FISH										
Herring	43	1,232	2,224	9,696	416	16	199	216	924	28
Mackerel	1,233	655	4,119	2,477	849	119	42	293	125	125
Blue whiting	314	323	125	4,635	3,119	8	14	4	139	92
Other pelagic	-	-	7,239	7,218	2,053	-	-	357	333	90
TOTAL	1,590	2,210	13,707	24,026	6,437	143	255	870	1,521	335
WET FISH										
Edible crabs	6	3	+	+	-	+	+	+	+	-
Norway lobster	10	2	31	32	45	13	3	64	53	102
Scallops	4	13	3	+	+	3	7	2	+	+
Pink shrimps	335	36	1,347	727	1,222	318	24	1,271	706	1,555
Squid	-	3	2	+	4	-	2	2	+	5
Wheiks	-	+	-	-	+	-	+	-	-	+
Other shellfish	1	4	5	+	2	+	1	1	+	1
TOTAL OF ALL FISH	5,166	8,922	17,675	26,180	12,324	2,392	2,811	3,928	3,225	4,801

LANDINGS IN SCOTLAND BY FOREIGN VESSELS

TABLE 24

BY NATIONALITY OF VESSEL

NATIONALITY	Weight (tonnes)					Value (£'000)				
	1983	1984	1985	1986	1987	1983	1984	1985	1986	1987
Belgium	1,337	1,374	513	73	206	906	1,084	401	64	206
Denmark	3,022	4,782	4,785	3,178	4,730	1,299	1,318	2,475	1,586	3,387
Eire	5	180	4,548	6,010	2,666	2	84	318	250	245
Faroe	295	616	383	75	3,100	133	168	202	2	559
France	-	37	121	70	199	-	26	72	66	140
West Germany	-	-	54	4	115	-	-	25	2	55
Holland	96	19	28	54	21	33	12	24	44	18
Iceland	-	52	6,755	6,805	675	-	29	387	317	80
Norway	412	1,862	488	9,820	473	19	91	25	883	32
Sweden	-	-	-	93	27	-	-	-	9	4
Other	-	-	-	-	113	-	-	-	-	77
TOTAL	5,166	8,922	17,675	26,180	12,324	2,392	2,811	3,928	3,225	4,801

LANDINGS IN SCOTLAND BY FOREIGN VESSELS

TABLE 25

CATCHES FROM SPECIFIED ICES AREAS BY INDIVIDUAL SPECIES

TONNES

	North Sea (ICES Area (IV))	West of Scotland (ICES Area (VIa))	Rockall (ICES Area (VIb))	Faroe (ICES Area (Vb))	Other* Areas	All Areas
DEMERSAL FISH						
Blue ling	-	-	-	+	1	2
Brill	+	-	-	-	-	+
Catfish	21	+	+	6	3	30
Cod	840	69	+	273	60	1,242
Conger eels	-	+	-	-	-	+
Dabs	13	+	-	1	-	14
Dogfish	58	4	1	-	-	62
Dover sole	-	-	-	-	-	+
Flounders	+	-	-	-	-	+
Gurnards	1	1	-	-	-	2
Haddock	292	64	14	32	126	529
Hake	4	3	-	-	-	7
Halibut	1	+	-	25	16	43
Lemon sole	33	1	+	32	-	67
Ling	167	43	+	21	9	240
Lythe	4	1	-	-	-	5
Megrim	3	13	2	-	-	18
Monks	141	17	1	10	-	168
Norway pout	-	1,188	-	-	-	1,188
Plaice	177	3	-	15	-	195
Redfish	+	+	-	7	3	11
Saithe	378	55	+	94	+	527
Sandeels	-	-	-	-	-	-
Skate	41	9	+	2	1	52
Tusk	2	+	+	49	37	88
Turbot	7	+	-	-	-	7
Whiting	53	17	-	1	-	72
Witches	35	-	-	-	-	35
Roes	-	-	-	-	-	+
Other demersal	6	1	-	+	+	8
TOTAL	2,277	1,489	18	570	258	4,613
PELAGIC FISH						
Herring	244	-	-	-	172	416
Mackerel	-	555	-	294	-	849
Blue whiting	-	1,583	-	-	1,537	3,119
Other pelagic	-	1,431	-	-	622	2,053
TOTAL	244	3,569	-	294	2,330	6,437
WET FISH	2,521	5,058	18	864	2,589	11,050
Edible crabs	-	-	-	-	-	-
Norway lobsters	45	-	-	-	-	45
Scallops	1	-	-	-	-	+
Pink shrimps	1,222	-	-	-	-	1,222
Squid	+	+	4	-	-	4
Other shellfish	2	-	-	-	-	2
TOTAL ALL FISH	3,791	5,059	22	864	2,589	12,324

* Other Area comprises Iceland (ICES Area Va), West of Ireland (ICES Area VIIb) and Porcupine Bank (ICES Area VIIc).

NATIONALITY OF VESSEL, PORT OF LANDING AND METHOD OF FISHING

(a) BY FISHING EFFORT

Nationality	Port of landing	Method of fishing	Arrivals	Hours fishing	Days absent
Belgium	Aberdeen	Beam trawl	6	859	56
		Demersal trawl	2	369	24
..	Wick	Demersal trawl	1	111	10
Total			9	1,339	90
Denmark	Aberdeen	Demersal pair trawl	2	120	16
..		Demersal trawl	6	342	42
..		Demersal gill nets	1	60	6
..		Purse seine	2	12	8
..	Peterhead	Demersal pair trawl	13	1,006	110
..		Demersal trawl	52	3,213	339
..		Demersal gill nets	14	1,156	101
..		Nephrop trawl	3	72	23
..		Shrimp trawl	98	4,911	598
..	Fraserburgh	Demersal trawl	13	916	83
..		Nephrop trawl	4	152	24
..		Shrimp trawl	4	248	28
..	Buckie	Demersal trawl	7	334	31
..		Nephrop trawl	4	183	14
..		Shrimp trawl	159	9,599	854
..	Wick	Demersal pair trawl	36	2,344	200
..		Demersal trawl	10	869	75
..		Demersal gill nets	24	1,631	163
..	Shetland	Demersal trawl	3	91	14
..	Stornoway	Industrial trawl	5	301	27
Total			460	27,472	2,756
Eire	Peterhead	Demersal trawl	1	50	4
..	Wick	Demersal trawl	7	850	62
..	Stornoway	Demersal trawl	1	20	2
..		Pelagic trawl	12	74	26
..	Ullapool	Pelagic trawl	1	8	2
Total			22	1,002	96
Faroe	Aberdeen	Demersal pair trawl	1	90	13
..		Lines	6	768	53
..	Wick	Demersal pair trawl	4	312	26
..		Demersal trawl	15	919	108
..		Lines	1	112	7
..	Shetland	Demersal pair trawl	3	218	39
..		Lines	1	-	24
..	Stornoway	Pelagic trawl	4	162	23
Total			35	2,581	293
France	Ullapool	Demersal trawl	1	164	11
..	Mallaig	Demersal trawl	3	235	28
..	Ayr	Demersal trawl	2	368	25
Total			6	767	64
W. Germany	Shetland	Demersal trawl	7	560	60
Total			7	560	60
Holland	Aberdeen	Beam trawl	1	90	5
Total			1	90	5
Iceland	Aberdeen	lines	1	140	8
..	Shetland	Purse seine	1	4	4
Total			2	144	12
Norway	Aberdeen	Demersal trawl	1	100	6
..	Stornoway	Purse seine	1	4	1
..		Pelagic trawl	2	84	13
Total			4	188	20
Sweden	Shetland	Pelagic trawl	1	10	9
Total			1	10	9
Other	Shetland	Demersal trawl	1	495	61
Total			1	495	61
Total all countries			548	34,648	3,466

LANDINGS IN SCOTLAND BY FOREIGN VESSELS

TABLE 26—continued

NATIONALITY OF VESSEL, PORT OF LANDING AND METHOD OF FISHING

(b) BY WEIGHT AND VALUE

Nationality	Port of landing	Method of fishing	Weight (Tonnes)					Value (£'000)				
			North Sea	West of Scotland	Faroe	Other Regions	All Regions	North Sea	West of Scotland	Faroe	Other Regions	All Regions
Belgium	Aberdeen	Beam trawl	159	—	—	—	159	156	—	—	—	156
		Demersal trawl	26	5	—	—	31	22	4	—	—	26
..	Wick	Demersal trawl	15	1	—	—	15	22	1	—	—	23
Total			200	6	—	—	206	200	5	—	—	206
Denmark	Aberdeen	Demersal pair trawl	8	—	—	—	8	5	—	—	—	5
..		Demersal trawl	20	—	9	—	29	24	—	4	—	28
..		Demersal gill nets	7	—	—	—	7	10	—	—	—	10
..		Purse seine	60	—	294	—	354	11	—	56	—	67
..	Peterhead	Demersal pair trawl	186	—	—	—	186	148	—	—	—	148
..		Demersal trawl	212	—	—	—	212	208	—	—	—	208
..		Demersal gill nets	105	28	—	—	133	98	31	—	—	130
..		Nephrop trawl	3	—	—	—	3	4	—	—	—	4
..		Shrimp trawl	524	—	—	—	524	633	—	—	—	633
..	Fraserburgh	Demersal trawl	50	—	—	—	50	39	—	—	—	39
..		Nephrop trawl	8	—	—	—	8	16	—	—	—	16
..		Shrimp trawl	27	—	—	—	27	28	—	—	—	28
..	Buckie	Demersal trawl	19	—	—	—	19	17	—	—	—	17
..		Nephrop trawl	9	—	—	—	9	12	—	—	—	12
..		Shrimp trawl	911	—	—	—	911	1,180	—	—	—	1,180
..	Wick	Demersal pair trawl	586	—	—	—	586	447	—	—	—	447
..		Demersal trawl	208	—	—	—	208	145	—	—	—	145
..		Demersal gill nets	255	6	—	—	261	221	5	—	—	227
..	Shetland	Demersal trawl	8	—	—	—	8	8	—	—	—	8
..	Stornoway	Industrial trawl	—	1,188	—	—	1,188	—	36	—	—	36
Total			3,206	1,222	303	—	4,730	3,254	72	60	—	3,387
Eire	Peterhead	Demersal trawl	—	4	—	—	4	—	3	—	—	3
..	Wick	Demersal trawl	—	83	—	18	101	—	73	—	10	83
..	Stornoway	Demersal trawl	—	—	—	4	4	—	—	—	5	5
..		Pelagic trawl	—	2,352	—	172	2,524	—	141	—	8	149
..	Ullapool	Pelagic trawl	—	33	—	—	33	—	4	—	—	4
Total			—	2,472	—	194	2,666	—	221	—	23	245
Faroe	Aberdeen	Demersal pair trawl	—	—	31	—	31	—	—	26	—	26
..		Lines	—	—	56	91	147	—	—	60	77	136
..	Wick	Demersal pair trawl	—	—	58	—	58	—	—	52	—	52
..		Demersal trawl	—	—	236	—	236	—	—	205	—	205
..		Lines	—	—	6	—	6	—	—	12	—	12
..	Shetland	Demersal pair trawl	—	—	90	—	90	—	—	46	—	46
..		Lines	—	—	84	—	84	—	—	10	—	10
..	Stornoway	Pelagic trawl	—	1,131	—	1,318	2,448	—	34	—	39	72
Total			—	1,131	561	1,409	3,100	—	34	411	116	559
France	Ullapool	Demersal trawl	5	14	—	—	19	5	14	—	—	19
..	Mallaig	Demersal trawl	—	48	—	—	48	—	45	—	—	45
..	Ayr	Demersal trawl	18	114	—	—	132	10	66	—	—	76
Total			23	176	—	—	199	15	125	—	—	140
W. Germany	Shetland	Demersal trawl	115	—	—	—	115	55	—	—	—	55
Total			115	—	—	—	115	55	—	—	—	55
Holland	Aberdeen	Beam trawl	21	—	—	—	21	18	—	—	—	18
Total			21	—	—	—	21	18	—	—	—	18
Iceland	Aberdeen	Lines	—	—	—	53	53	—	—	—	54	54
..	Shetland	Purse seine	—	—	—	622	622	—	—	—	25	25
Total			—	—	—	675	675	—	—	—	80	80
Norway	Aberdeen	Demersal trawl	44	—	—	—	44	19	—	—	—	19
..	Stornoway	Purse seine	157	—	—	—	157	5	—	—	—	5
..		Pelagic trawl	—	53	—	219	272	—	1	—	6	8
Total			201	53	—	219	473	24	1	—	6	32
Sweden	Shetland	Pelagic trawl	27	—	—	—	27	4	—	—	—	4
Total			27	—	—	—	27	4	—	—	—	4
Other	Shetland	Demersal trawl	—	—	—	113	113	—	—	—	77	77
Total			—	—	—	113	113	—	—	—	77	77
Total all countries			3,791	5,059	864	2,611	12,324	3,570	458	471	302	4,801

SCOTTISH FISHING VESSELS
NUMBER OF VESSELS BY SIZE

TABLE 27

Vessel Size	1983	1984	1985	1986	1987
Under 30 ft	800	786	802	791	810
30 ft-39.9 ft	391	398	414	425	465
40 ft-59.9 ft	496	469	461	435	440
60 ft-79.9 ft	467	469	461	465	469
80 ft-109.9 ft	38	35	32	33	38
110 ft-139.9 ft	20	20	21	22	26
140 ft and over	2	3	7	12	15
Total vessels over 30 ft	1,414	1,394	1,396	1,392	1,453
Total all vessels	2,214	2,180	2,198	2,183	2,263

* Of the 79 vessels 80 feet and over in 1987: 27 were trawlers, 1 was a liner, 5 were seiners and 46 were purse seiners.

SCOTTISH FISHING VESSELS
NUMBER OF VESSELS BY SIZE AND BASE DISTRICT

TABLE 28

	Under 30 ft	30 ft- 39.9 ft	40 ft- 59.9 ft	60 ft- 79.9 ft	80 ft- 109.9 ft	110 ft- 139.9 ft	140 ft and Over	Total
Eyemouth	48	41	35	22	1	-	-	147
Pittenweem	68	18	26	20	-	-	-	132
Arbroath	39	8	27	4	1	-	-	79
Aberdeen	12	9	8	15	2	4	-	50
Peterhead	32	5	19	76	11	4	-	147
Fraserburgh	35	7	30	71	7	6	6	162
Macduff	13	6	38	47	4	6	-	114
Buckie	6	4	35	70	2	-	-	117
Lossiemouth	12	4	28	67	-	-	-	111
Wick	59	23	13	7	1	-	-	103
Orkney	57	27	3	10	3	1	1	102
Shetland	62	20	13	25	5	3	8	136
Stornoway	88	69	30	6	1	-	-	194
Kinlochbervie	2	5	4	-	-	-	-	11
Lochinver	5	7	6	5	-	-	-	23
Ullapool	20	29	8	-	-	-	-	57
Mallaig	83	70	23	3	-	2	-	181
Oban	80	32	5	-	-	-	-	117
Campbeltown	62	38	43	1	-	-	-	144
Ayr	27	43	46	20	-	-	-	136
ALL DISTRICTS	810	465	440	469	38	26	15	2,263

* Vessels are recorded by base district, but may not necessarily fish from that district.

SCOTTISH FISHING VESSELS

TABLE 29

CHANGES IN THE OVER 30' FLEET

			1983	1984	1985	1986	1987
30'-39.9':	Additions:	New	7	10	8	7	18
		Second hand	35	37	37	34	44
		TOTAL	42	47	45	41	62
	Deletions:	Sunk/Wrecked	3	2	2	3	1
		Sold outside Scotland	7	4	7	7	12
		Ceased fishing/Laid up	23	34	20	20	9
TOTAL	33	40	29	30	22		
40'-79.9':	Additions:	New	11	15	22	20	19
		Second hand	19	28	25	12	23
		TOTAL	30	43	47	32	42
	Deletions:	Sunk/Wrecked	13	12	12	4	3
		Sold outside Scotland	21	22	28	20	23
		Ceased fishing/Laid up	15	34	22	30	3
Length change†		-	-	1	-	4	
TOTAL	49	68	63	54	33		
80' and over:	Additions:	New	-	1	-	1	6
		Second hand	2	4	4	6	5
		Length change	-	-	1	-	4
	TOTAL	2	5	5	7	15	
	Deletions:	Sunk/Wrecked	-	-	-	-	2
		Sold outside Scotland	4	1	1	-	1
Ceased fishing/Laid up		-	6	2	-	-	
TOTAL	4	7	3	-	3		
All vessels over 30'	Additions:	New	18	26	30	28	43
		Second hand	56	69	66	52	72
		Length change	-	-	1	-	4
	TOTAL	74	95	97	80	119	
	Deletions:	Sunk/Wrecked	16	14	14	7	6
		Sold outside Scotland	32	27	36	27	36
Ceased fishing/Laid up		38	74	44	50	12	
Length change		-	-	1	-	4	
TOTAL	86	115	95	84	58		

† Length change included so that Tables 27 and 29 balance.

SCOTTISH FISHING VESSELS

TABLE 30

NUMBER OF VESSELS BY NORMAL METHOD OF FISHING

	1983	1984	1985	1986	1987
Demersal trawl	291	244	253	235	253
Demersal pair trawl	76	104	116	122	132
Industrial trawl	17	12	10	6	6
Seine net	302	291	291	283	277
Lines	112	94	83	70	69
Purse seine	42	44	45	47	47
Pelagic trawl	26	23	20	12	7
Other nets	43	48	46	43	32
Nephrops trawl	317	337	335	383	412
Other shellfishing	988	983	999	982	1,028
TOTAL	2,214	2,180	2,198	2,183	2,263

FISHERMEN EMPLOYED

TABLE 31

	1983	1984	1985	1986	1987
REGULARLY EMPLOYED	7,173	7,198	7,170	7,244	7,522
PARTIALLY EMPLOYED	815	764	775	836	814
CROFTERS	87	138	157	156	156
TOTAL REGULARLY AND PARTIALLY EMPLOYED	8,075	8,100	8,102	8,236	8,492

SCOTTISH FISHING VESSELS AND FISHERMEN EMPLOYED

TABLE 32

NUMBER OF VESSELS BY BASE DISTRICT

AND NUMBER OF FISHERMEN BY DISTRICT OF RESIDENCE

	Vessels			Fishermen			
	Under 30 ft	30 ft and over	Total	Regularly Employed	Partially Employed	Crofters	Total
Eyemouth	48	99	147	472	31	—	503
Pittenweem	68	64	132	374	37	—	411
Arbroath	39	40	79	211	68	—	279
Aberdeen	12	38	50	245	16	—	261
Peterhead	32	115	147	811	67	—	878
Fraserburgh	35	127	162	897	49	—	946
Macduff	13	101	114	669	25	—	694
Buckie	6	111	117	644	13	—	657
Lossiemouth	12	99	111	623	32	—	655
Wick	59	44	103	191	89	—	280
Orkney	57	45	102	215	63	—	278
Shetland	62	74	136	440	34	38	512
Stornoway	88	106	194	282	66	93	441
Kinlochbervie	2	9	11	35	2	—	37
Lochinver	5	18	23	73	—	—	73
Ullapool	20	37	57	104	15	—	119
Mallaig	83	98	181	347	43	19	409
Oban	80	37	117	127	81	6	214
Campbeltown	62	82	144	330	27	—	357
Ayr	27	109	136	432	56	—	488
ALL DISTRICTS	810	1,453	2,263	7,522	814	156	8,492

DISPOSAL OF SCOTTISH HERRING, MACKEREL AND SPRAT CATCH

TABLE 33

Thousand tonnes

	1983	1984	1985	1986	1987
Herring					
Home Market ⁽¹⁾	10.4	12.2	12.0	16.4	18.1
Klondyked	26.2	39.3	54.8	77.1	65.6
Overland Klondyked	0.4	2.7	1.4	0.7	-
Pet Food	0.7	-	0.4	0.1	+
Oil and Meal	13.6	13.6	18.4	5.9	12.2
Dumped and Bait	+	0.1	+	0.5	0.5
Total Herring Landings	51.4	67.8	86.9	100.7	96.3
Mackerel					
Home Market ⁽¹⁾	30	18	18	25	27.5
Klondyked	80	130	137	92	131.1
Overland Klondyked	1	+	2	1	-
Pet Food	+	+	+	1	0.1
Oil and Meal	9	6	15	10	11.7
Dumped and Bait	+	+	+	+	0.1
Total Mackerel Landings	120	155	171	129	170.4
Sprat					
Home Market ⁽¹⁾	2	2	3	+	0.6
Klondyked	1	+	+	+	+
Overland Klondyked	-	-	-	-	-
Pet Food	-	+	-	-	-
Oil and Meal	+	+	+	+	0.1
Dumped and Bait	-	-	-	-	+
Total Sprat Landings	2	2	3	1	0.7

⁽¹⁾ Home market includes freshing and kippering, curing, redding and marinating, quickfreezing and canning.

RAW MATERIALS USED IN THE PRODUCTION OF FISHERY BY-PRODUCTS

TABLE 34

Thousand tonnes

	1983	1984	1985	1986	1987
Norway pout	-	3.5	-	0.2	1.7
Herring	13.3	15.9	20.5	7.3	10.1
Herring offal	6.0	7.9	4.8	4.3	2.5
Sprats	+	+	0.4	0.1	1.0
White fish	49.9	1.5	7.4	0.6	0.5
White fish offal	90.0	92.4	106.0	108.9	105.9
Others (horse mackerel)	-	0.8	2.9	0.4	2.1
Mackerel	8.3	6.8	18.3	11.7	11.1
Mackerel offal	0.3	0.2	3.7	3.5	1.7
Sandeels	-	39.1	26.2	26.5	11.4
Capelin	-	-	7.2	6.8	-
Blue whiting	-	-	0.1	8.8	6.3
Total	167.8	168.1	197.6	179.3	162.0*

* Total includes an additional 8.5 thousand tonnes of mackerel/herring offal which could not be attributed to either species.

	TONNES (000s)					£(million)				
	1983	1984	1985	1986	1987	1983	1984	1985	1986	1987
Fish meal	36.0	32.5	33.1	30.5	30.5	10.9	10.3	9.3	8.4	7.0
Fish oil	6.2	5.6	8.9	6.5	6.9	1.4	1.4	1.9	0.8	1.0
Pet food/Animal feed	12.8	..	24.7	32.4	17.0	0.9	..	1.8	2.2	1.3
Total	54.9	38.1	66.7	69.5	54.4	13.1	11.7	13.0	11.4	9.3

FISH PROCESSED*

TABLE 36

WEIGHT AND VALUE OF FISH PROCESSED ACCORDING TO METHOD OF PROCESS*

	WEIGHT ('000 TONNES)						VALUE (£ MILLION)					
	Total processed	Dried	Smoked	Pickled	Canned	Marinated	Total value	Dried	Smoked	Pickled	Canned	Marinated
Herring	8.7	-	6.8	0.8	0.1	1.0	7.6	-	6.7	0.3	0.1	0.6
Mackerel	4.9	-	3.4	-	1.5	-	6.6	-	3.8	-	2.8	-
Sprats	0.6	-	-	-	0.6	-	1.3	-	-	-	1.3	-
Cod	0.5	-	0.5	-	-	-	1.1	-	1.1	-	-	-
Haddock	4.9	-	4.9	-	-	-	10.0	-	10.0	-	-	-
Ling	0.6	+	0.6	-	-	-	0.7	+	0.7	-	-	-
Lythe	+	-	+	-	-	-	+	-	+	-	-	-
Saithe	1.2	-	1.2	-	-	-	1.4	-	1.4	-	-	-
Tusk	+	-	+	-	-	-	+	-	+	-	-	-
Whiting	0.9	-	0.9	-	-	-	1.9	-	1.9	-	-	-
Other Species	+	-	-	-	+	-	+	-	-	-	+	-
TOTAL	22.3	+	18.3	0.8	2.2	1.0	30.6	+	25.5	0.3	4.3	0.6

* The weights and values shown in this table are after processing.