

## Scotland's Labour Market - Monthly Briefing – September 2020

Scottish Government: Office of the Chief Economic Adviser

This document contains up-to-date statistical information concerning the labour market in Scotland from a range of official sources.

This document is part of a collection:

<https://www.gov.scot/collections/labour-market-statistics/>

HEADLINE ESTIMATES gender ages	YOUTH 16-24 YEARS gender UK regions International gender	LABOUR MARKET disability minority ethnic underemployment qualifications full-time education	UNEMPLOYMENT duration model based	ALTERNATIVE CLAIMANT COUNT all ages 16-24 years local authorities	CLAIMANT COUNT all ages 16-24 years local authorities	HMRC EARNINGS
--------------------------------------	--	--	---	--	--	---------------

**new  
data**

<p style="text-align: center;"><b>1. HEADLINE MEASURES</b></p> <p><i>Headline data</i></p> <p><i>gender</i></p> <p><i>age</i></p>	<ul style="list-style-type: none"> <li>y Table 1.1: Employment and unemployment, May-Jul 2020</li> <li>y Charts 1.1 and 1.2: Employment and unemployment rate trends for Scotland and UK, May-Jul 2020</li> <li>y Charts 1.3 and 1.4: Employment and unemployment rate trends for Scotland and UK, May-Jul 2020 - change on quarter and year</li> <li>y Charts 1.5 and 1.6: Unemployment rate (16+) by UK country, May-Jul 2020 - change on quarter and year</li> <li>y Table 1.2: Economic activity and inactivity, May-Jul 2020</li> <li>y Tables 1.3 and 1.4: Unemployment and Employment by Government Office Region, May-Jul 2020</li> <li>y Charts 1.7 and 1.8: Employment rate (16-64) for Government Office Regions, May-Jul 2020 - change on quarter and year</li> <li>y Charts 1.9 and 1.10: Unemployment rate (16+) for Government Office Regions, May-Jul 2020 - change on quarter and year</li> <li>y Table 1.5: Employment, ILO unemployment and inactivity rates by gender, May-Jul 2020</li> <li>y Chart 1.11: Employment rate by gender (16-64), Scotland and UK, 1997-2020</li> <li>y Chart 1.12: Unemployment rate by gender (16+), Scotland and UK, 1997-2020</li> <li>y Chart 1.13: Inactivity rate by gender (16-64), Scotland, UK 1997-2020</li> <li>y Table 1.6 : Employment, ILO Unemployment and Inactivity by age group, Scotland and UK (APS and LFS)</li> </ul>
<p style="text-align: center;"><b>2: YOUTH 16-24 YEARS</b></p> <p><i>Headline data</i></p> <p><i>gender</i></p> <p><i>UK</i></p>	<ul style="list-style-type: none"> <li>y Table 2.1: Youth Employment, Unemployment and Inactivity (LFS and APS), Scotland and UK</li> <li>y Charts 2.1 and 2.2: Youth employment and unemployment, Scotland and UK (APS)</li> <li>y Table 2.2: Employment, ILO unemployment and inactivity for 16-24 age group by gender, Scotland and UK (APS), Jul 2019 - Jun 2020</li> <li>y Charts 2.3 and 2.4: Youth employment and unemployment by gender, Scotland (APS)</li> <li>y Tables 2.3 and 2.4: Youth Unemployment and Employment by Government Office Region, May-Jul 2020</li> </ul>
<p style="text-align: center;"><b>3: LABOUR MARKET</b></p> <p><i>disability</i></p> <p><i>ethnicity</i></p> <p><i>self-employed, full-time part-time</i></p> <p><i>underemployment</i></p> <p><i>qualifications</i></p> <p><i>excluding full-time education</i></p>	<ul style="list-style-type: none"> <li>y Table 3.1: Employment rates and levels of the population aged 16-64 by disability status, Scotland (LFS and APS), 2013-2020</li> <li>y Table 3.2: Employment rates and levels of the population aged 16-64 by ethnicity and gender, Scotland, 2012 - 2020</li> <li>y Table 3.3: Employment patterns, Scotland, May-Jul 2020</li> <li>y Table 3.4: Underemployment, Scotland and UK, 2013-2020</li> <li>y Table 3.5: Employment rates by highest qualification held and gender, Scotland and UK, Jul 2019 - Jun 2020</li> <li>y Table 3.6: Unemployment, employment and economic inactivity (All and excluding full-time education), Scotland 2010-2020</li> </ul>

## Scotland's Labour Market - Monthly Briefing – September 2020

Scottish Government: Office of the Chief Economic Adviser

This document contains up-to-date statistical information concerning the labour market in Scotland from a range of official sources.

This document is part of a collection:

<https://www.gov.scot/collections/labour-market-statistics/>

HEADLINE ESTIMATES gender ages	YOUTH 16-24 YEARS gender UK regions International gender	LABOUR MARKET disability minority ethnic underemployment qualifications full-time education	UNEMPLOYMENT duration model based	ALTERNATIVE CLAIMANT COUNT all ages 16-24 years local authorities	CLAIMANT COUNT all ages 16-24 years local authorities	HMRC EARNINGS
--------------------------------------	--	--	---	--	--	---------------

**new  
data**

<p style="text-align: center;"><b>4: UNEMPLOYMENT</b></p> <p><i>by duration model-based by age</i></p>	<p>y Table 4.1: Unemployment by duration, Annual Population Survey, Jul 2019 - Jun 2020</p> <p>y Table 4.2: Model Based Unemployment levels and rates by Local Authority</p> <p>y Chart 4.1: ILO unemployment levels by age-group (16-64), Scotland</p>
<p style="text-align: center;"><b>5: CLAIMANT COUNT</b></p> <p><i>16+ years</i></p> <p><i>16-24 years</i></p>	<p>y Chart 5.1: Unemployment, Alternative Claimant Count and Claimant Count levels, Scotland, January 2013 - August 2020</p> <p>y Table 5.1: Claimant Count data for August 2020 - (Experimental Data)</p> <p>y Table 5.2: Claimant Count by local authority (Experimental data)</p> <p>y Chart 5.2: Change in Claimant Count rate by local authority (August 2019 to August 2020)</p> <p>y Tables 5.3 and 5.4: 16-24 Claimant Count levels and rates, Scotland and UK (Experimental data)</p> <p>y Table 5.5: 16-24 Claimant Count levels and rates by Local Authority, July 2020 (Experimental data)</p>
<p style="text-align: center;"><b>6: ALTERNATIVE CLAIMANT COUNT</b></p> <p><i>16+ years</i></p> <p><i>16-24 years</i></p>	<p>Table 6.1: Alternative Claimant Count data for May 2020 - (Experimental Data)</p> <p>Table 6.2: Alternative Claimant Count by local authority (Experimental data)</p> <p>Tables 6.3 and 6.4: 16-24 Alternative Claimant Count levels and rates, Scotland and UK (Experimental data)</p> <p>Table 6.5: 16-24 Alternative Claimant Count levels and rates by Local Authority (Experimental data)</p>
<p style="text-align: center;"><b>7: HMRC REAL TIME PAYE DATA</b></p> <p><i>Scotland and UK</i></p> <p><i>by region</i></p>	<p>y Table 7.1: Median monthly pay, Scotland and UK, July 2015 - July 2020 (Experimental statistics)</p> <p>y Chart 7.1: Median monthly pay, Scotland and UK, July 2015 - July 2020 (Experimental statistics)</p> <p>y Chart 7.2: Annual change in median monthly pay, July 2019 to July 2020, by Government Office Region (Experimental statistics)</p>
<p style="text-align: center;"><b>BACKGROUND INFORMATION</b></p> <p>Notes - 1</p> <p>Notes - 2</p>	<p>Further information on Alternative Claimant Count, Claimant Count and Measures of Disability</p> <p>Further sources and contact details</p>

**Table 1.1: Employment and unemployment, May-Jul 2020**  
*seasonally adjusted*

	Level ('000)							Rate						
	Level	change on Feb-Apr 2020		change on year		change on May-Jul 2008		Rate (%)	change on Feb-Apr 2020 (%pt)		change on year (%pt)		change on May-Jul 2008 (%pt)	
<b>Employment* (levels 16+, rates 16-64)</b>														
Scotland	2,650	-2	↓	-19	↓	98	↑	74.3	0.1	↑	-0.6	↓	0.2	↑
England	27,975	-7	↓	223	↑	3,000	↑	77.0	0.2	↑	0.5	↑	4.0	↑
Wales	1,485	-5	↓	-2	↓	113	↑	74.7	0.3	↑	0.0	↔	5.0	↑
Northern Ireland	870	2	↑	0	↔	73	↑	71.5	-0.1	↓	-0.5	↓	3.2	↑
UK	32,979	-12	↓	202	↑	3,284	↑	76.5	0.1	↑	0.4	↑	3.7	↑
<b>Unemployment** (16+)</b>														
Scotland	128	1	↑	19	↑	17	↑	4.6	0.1	↑	0.7	↑	0.4	↑
England	1,196	54	↑	96	↑	-298	↓	4.1	0.2	↑	0.3	↑	-1.5	↓
Wales	47	1	↑	-11	↓	-37	↓	3.1	0.1	↑	-0.7	↓	-2.7	↓
Northern Ireland	26	5	↑	0	↔	-9	↓	2.9	0.6	↑	0.0	↔	-1.3	↓
UK	1,398	62	↑	104	↑	-326	↓	4.1	0.2	↑	0.3	↑	-1.4	↓

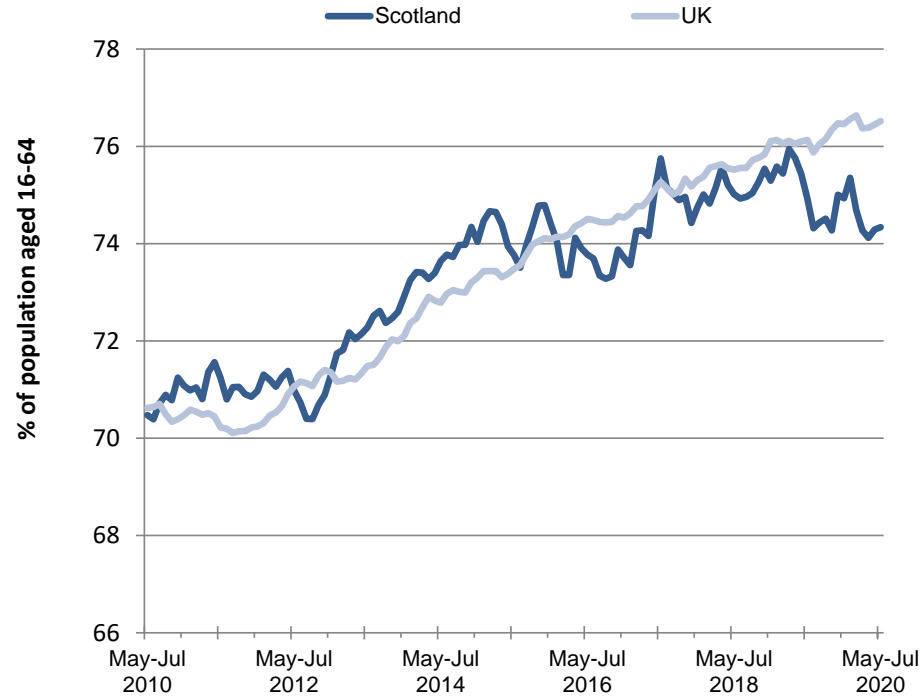
Source: Labour Force Survey, ONS

Note: \*Denominator = all persons aged 16-64 \*\*Denominator = total economically active (16+)

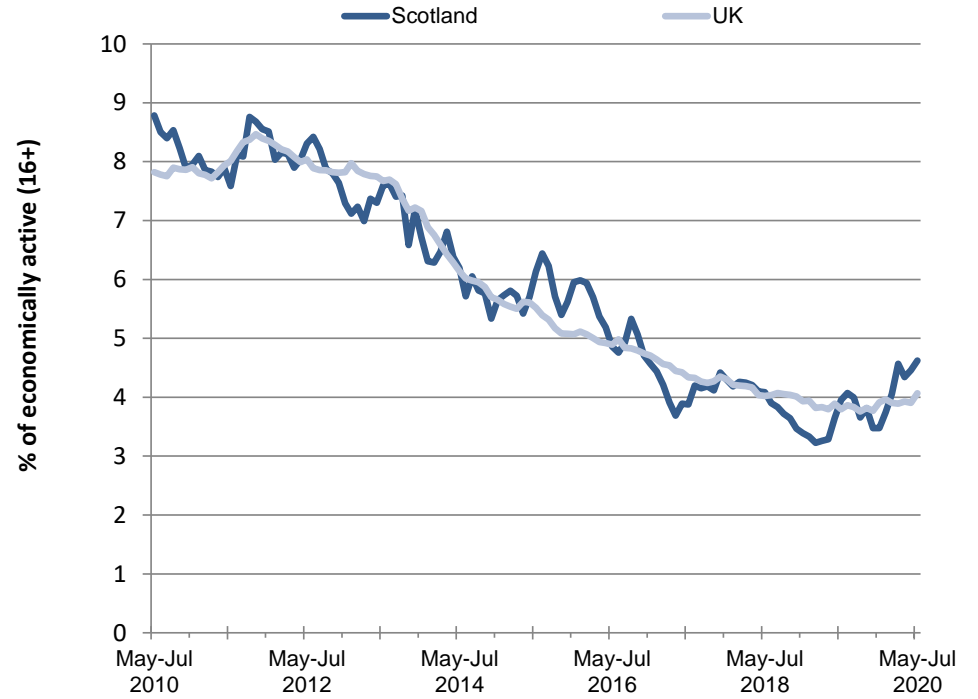
**Charts 1.1 and 1.2: Employment and unemployment rate trends for Scotland and UK, May-Jul 2020**

*seasonally adjusted*

**Chart 1.1: Employment rate (16-64), Scotland and UK**  
*seasonally adjusted*

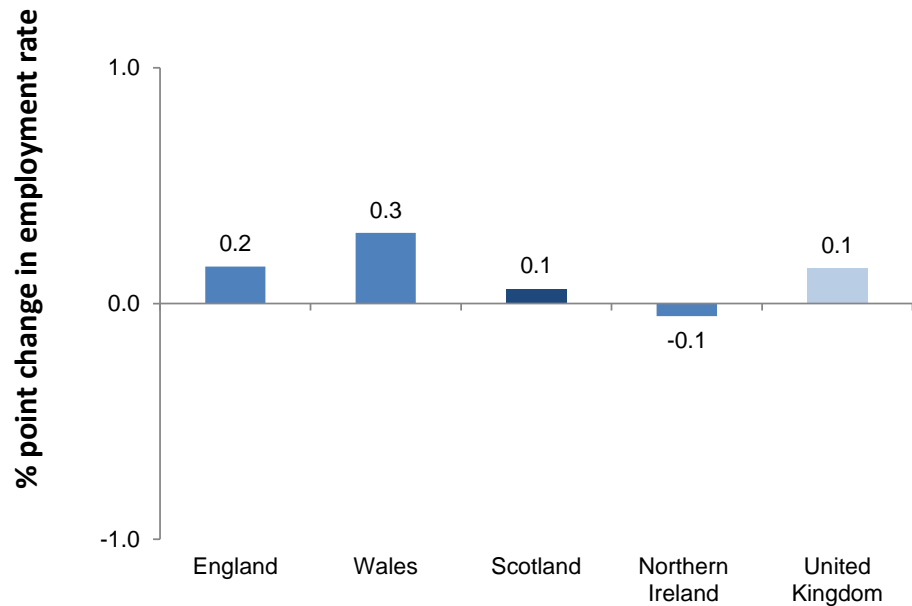


**Chart 1.2: Unemployment rate (16+), Scotland and UK**  
*seasonally adjusted*



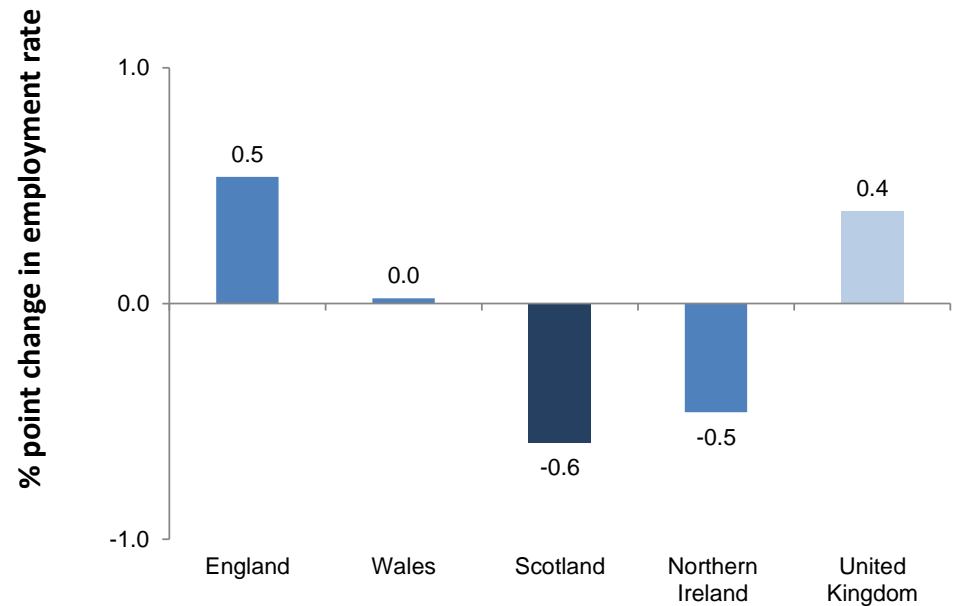
**Charts 1.3 and 1.4: Employment and unemployment rate trends for Scotland and UK, May-Jul 2020 - change on quarter and year**  
*seasonally adjusted*

**Chart 1.3: Employment rate (16-64) by UK country - change on quarter**  
*seasonally adjusted*



Source: Labour Force Survey, ONS

**Chart 1.4: Employment rate (16-64) by UK country - change on year**  
*seasonally adjusted*



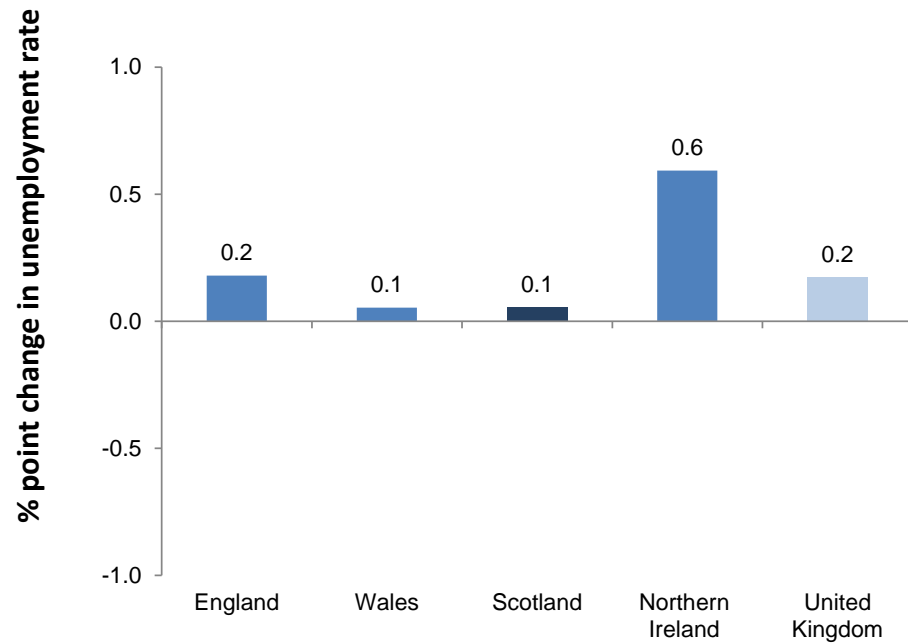
Source: Labour Force Survey, ONS

Source: Labour Force Survey, ONS

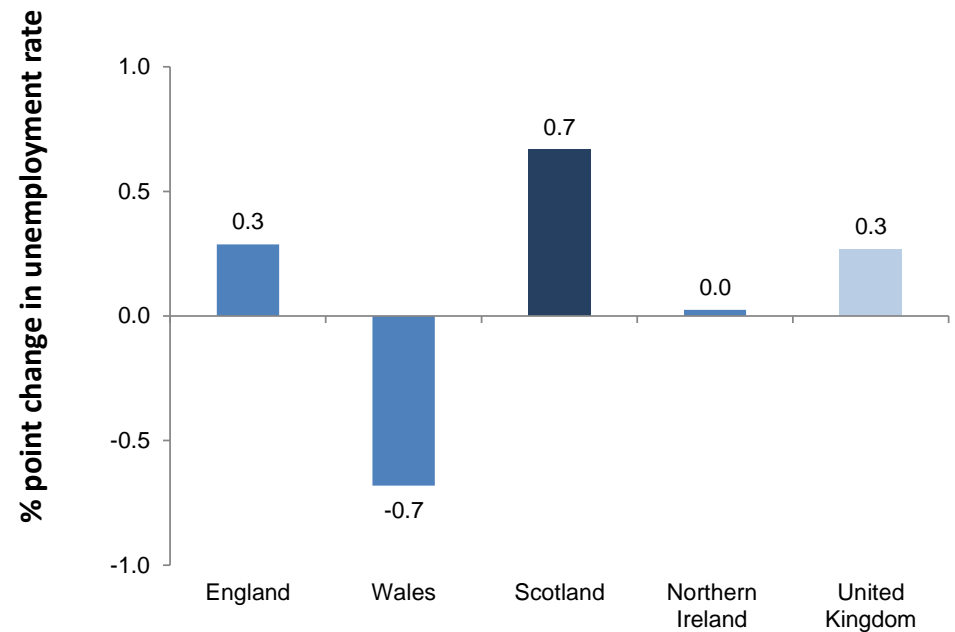
Note: Chart bars based on unrounded data. Chart labels rounded to one decimal place.

**Charts 1.5 and 1.6: Unemployment rate (16+) by UK country, May-Jul 2020 - change on quarter and year**  
*seasonally adjusted*

**Chart 1.5: Unemployment rate (16+) by UK country - change on quarter**  
*seasonally adjusted*



**Chart 1.6: Unemployment rate (16+) by UK country - change on year**  
*seasonally adjusted*



Source: Labour Force Survey, ONS

Note: Chart bars based on unrounded data. Chart labels rounded to one decimal place.

**Table 1.2: Economic activity and inactivity, May-Jul 2020**  
*seasonally adjusted*

	Level ('000)				Rate								
	Level	change on Feb-Apr 2020	change on year	change on May-Jul 2008	Rate (%)	change on Feb-Apr 2020 (%pt)	change on year (%pt)	change on May-Jul 2008 (%pt)					
<b>Economic Activity* (levels 16+, rates 16-64)</b>													
Scotland	2,779	0 ↔	0 ↔	115 ↑	78.0	0.1 ↑	-0.1 ↓	0.6 ↑					
England	29,171	47 ↑	319 ↑	2,703 ↑	80.4	0.3 ↑	0.8 ↑	3.0 ↑					
Wales	1,532	-4 ↓	-13 ↓	76 ↑	77.1	0.4 ↑	-0.6 ↓	3.0 ↑					
Northern Ireland	895	7 ↑	0 ↔	64 ↑	73.7	0.4 ↑	-0.4 ↓	2.4 ↑					
UK	34,377	50 ↑	306 ↑	2,957 ↑	79.8	0.3 ↑	0.6 ↑	2.8 ↑					
<b>Economic Inactivity* (16-64)</b>													
Scotland	757	-4 ↓	3 ↑	-5 ↓	22.0	-0.1 ↓	0.1 ↑	-0.6 ↓					
England	6,852	-102 ↓	-255 ↓	-695 ↓	19.6	-0.3 ↓	-0.8 ↓	-3.0 ↓					
Wales	436	-7 ↓	12 ↑	-60 ↓	22.9	-0.4 ↓	0.6 ↑	-3.0 ↓					
Northern Ireland	307	-5 ↓	5 ↑	-21 ↓	26.3	-0.4 ↓	0.4 ↑	-2.4 ↓					
UK	8,352	-118 ↓	-235 ↓	-781 ↓	20.2	-0.3 ↓	-0.6 ↓	-2.8 ↓					

Source: Labour Force Survey, ONS  
 Note: \*Denominator = all aged 16-64

**Table 1.3: Unemployment by Government Office Region (LFS), May-Jul 2020**  
seasonally adjusted

	Level (000s)	change on Feb-Apr 2020 (000s)	change on year (000s)	Rate (%)	%pt change on Feb-Apr 2020	%pt change on year
North East	68	0 ↔	5 ↑	5.2	0.0 ↔	0.2 ↑
North West	129	-22 ↓	-27 ↓	3.5	-0.6 ↓	-0.8 ↓
Yorkshire and The Humber	108	2 ↑	-8 ↓	4.0	0.1 ↑	-0.3 ↓
East Midlands	109	17 ↑	-6 ↓	4.4	0.7 ↑	-0.2 ↓
West Midlands	129	-12 ↓	7 ↑	4.4	-0.4 ↓	0.2 ↑
East	120	3 ↑	21 ↑	3.7	0.1 ↑	0.7 ↑
London	256	21 ↑	31 ↑	5.0	0.3 ↑	0.3 ↑
South East	169	23 ↑	34 ↑	3.5	0.5 ↑	0.7 ↑
South West	108	22 ↑	40 ↑	3.8	0.8 ↑	1.4 ↑
Wales	47	1 ↑	-11 ↓	3.1	0.1 ↑	-0.7 ↓
Northern Ireland	26	5 ↑	0 ↔	2.9	0.6 ↑	0.0 ↔
<b>Scotland</b>	<b>128</b>	<b>1 ↑</b>	<b>19 ↑</b>	<b>4.6</b>	<b>0.1 ↑</b>	<b>0.7 ↑</b>
<b>United Kingdom</b>	<b>1,398</b>	<b>62 ↑</b>	<b>104 ↑</b>	<b>4.1</b>	<b>0.2 ↑</b>	<b>0.3 ↑</b>
England	1,196	54 ↑	96 ↑	4.1	0.2 ↑	0.3 ↑

Source: Labour Force Survey, ONS

**Table 1.4: Employment by UK Countries and Regions (LFS), May-Jul 2020**  
seasonally adjusted

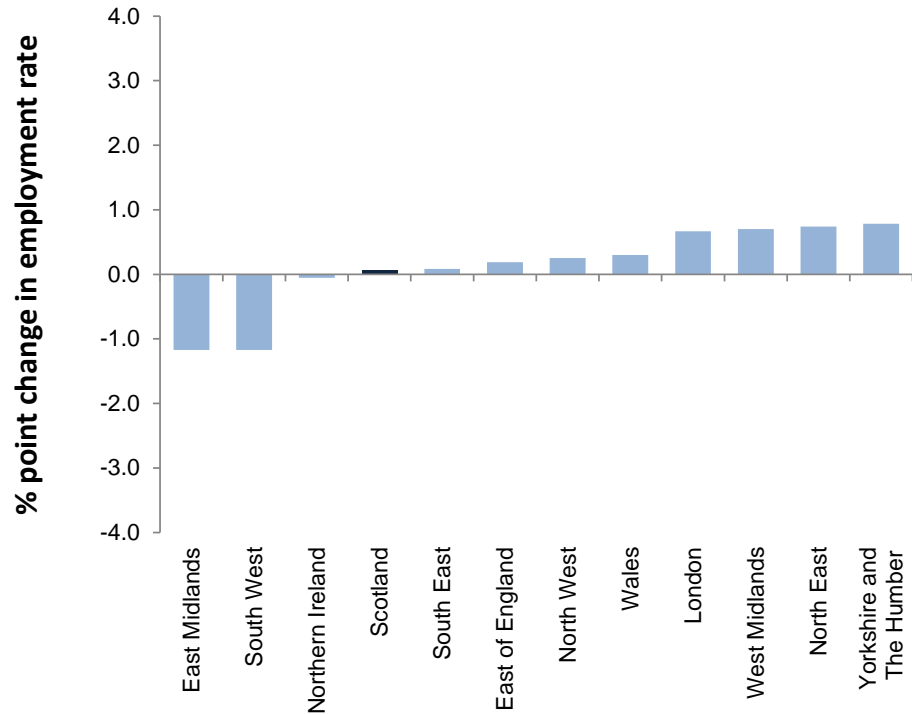
	Level (000s)	change on Feb-Apr 2020 (000s)	change on year (000s)	Rate (%)	%pt change on Feb-Apr 2020 (000s)	%pt change on year
North East	1,251	6 ↑	41 ↑	74.6	0.7 ↑	3.5 ↑
North West	3,539	-9 ↓	58 ↑	76.1	0.3 ↑	1.4 ↑
Yorkshire and The Humber	2,609	8 ↑	21 ↑	74.8	0.8 ↑	0.9 ↑
East Midlands	2,365	-30 ↓	-1 ↓	77.0	-1.2 ↓	0.1 ↑
West Midlands	2,825	36 ↑	8 ↑	75.2	0.7 ↑	0.5 ↑
East	3,109	-3 ↓	-20 ↓	78.2	0.2 ↑	-1.0 ↓
London	4,880	52 ↑	248 ↑	77.0	0.7 ↑	2.7 ↑
South East	4,655	-27 ↓	-30 ↓	79.6	0.1 ↑	-0.2 ↓
South West	2,743	-40 ↓	-102 ↓	77.8	-1.2 ↓	-3.0 ↓
Wales	1,485	-5 ↓	-2 ↓	74.7	0.3 ↑	0.0 ↔
Northern Ireland	870	2 ↑	0 ↔	71.5	-0.1 ↓	-0.5 ↓
<b>Scotland</b>	<b>2,650</b>	<b>-2 ↓</b>	<b>-19 ↓</b>	<b>74.3</b>	<b>0.1 ↑</b>	<b>-0.6 ↓</b>
<b>United Kingdom</b>	<b>32,979</b>	<b>-12 ↓</b>	<b>202 ↑</b>	<b>76.5</b>	<b>0.1 ↑</b>	<b>0.4 ↑</b>
England	27,975	-7 ↓	223 ↑	77.0	0.2 ↑	0.5 ↑

Source: Labour Force Survey, ONS

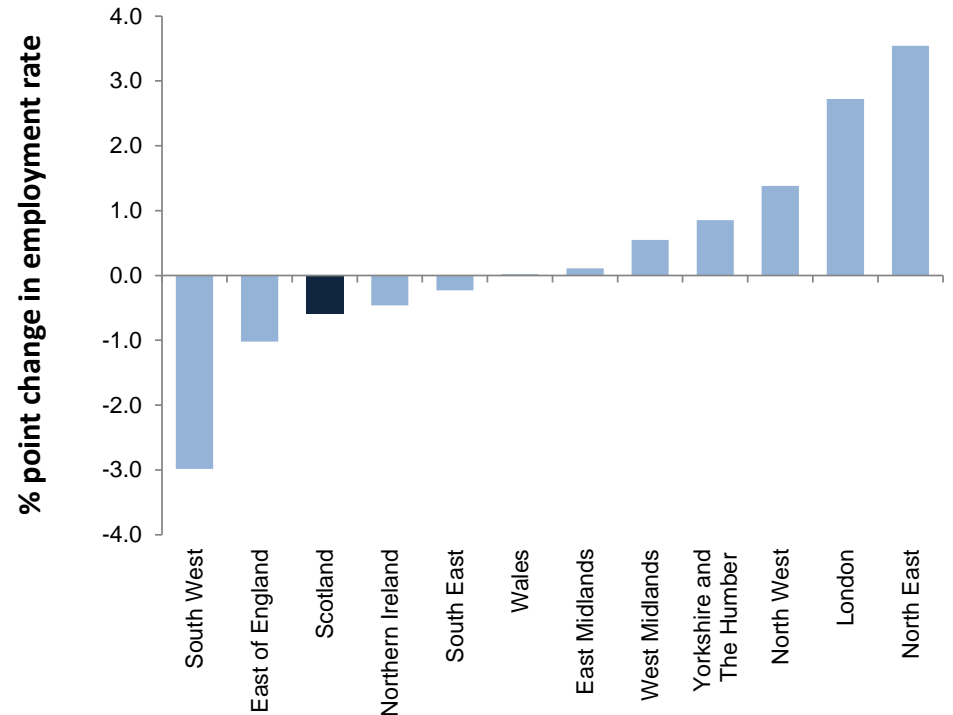


**Charts 1.7 and 1.8: Employment rate (16-64) for Government Office Regions, May-Jul 2020 - change on quarter and year**  
*seasonally adjusted*

**Chart 1.7: Employment rate (16-64) by Government Office Region - change on quarter**  
*seasonally adjusted*



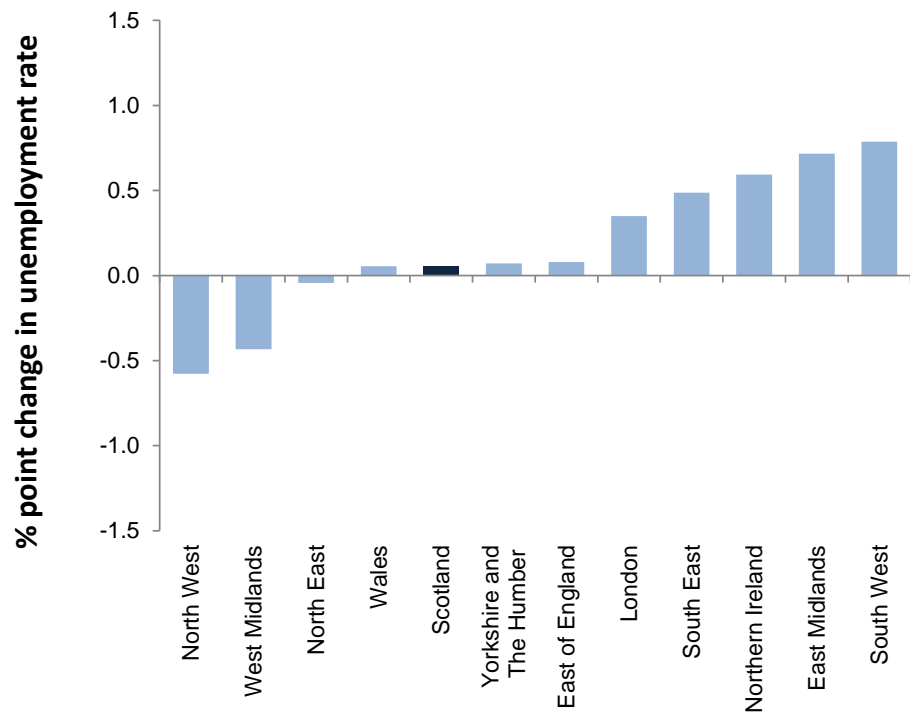
**Chart 1.8: Employment rate (16-64) by Government Office Region - change on year**  
*seasonally adjusted*



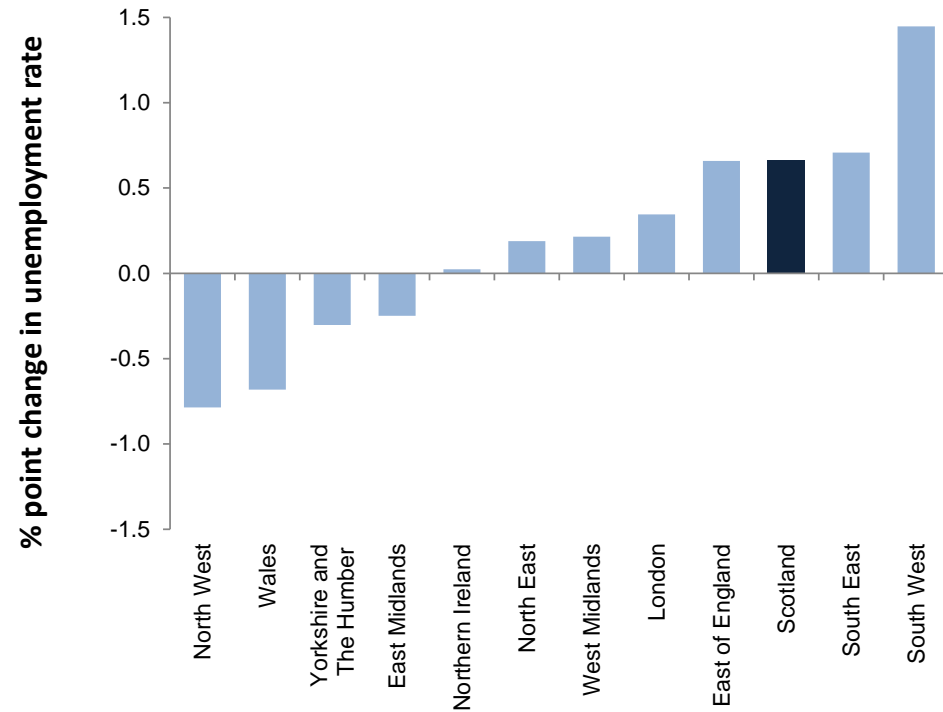
Source: Labour Force Survey, ONS

**Charts 1.9 and 1.10: Unemployment rate (16+) for Government Office Regions, May-Jul 2020 - change on quarter and year**  
*seasonally adjusted*

**Chart 1.9: Unemployment rate (16+) by Government Office Region - change on quarter**  
*seasonally adjusted*



**Chart 1.10: Unemployment rate (16+) by Government Office Region - change on year**  
*seasonally adjusted*



Source: Labour Force Survey, ONS

**Table 1.5: Employment, ILO unemployment and inactivity rates by gender, May-Jul 2020**  
*seasonally adjusted*

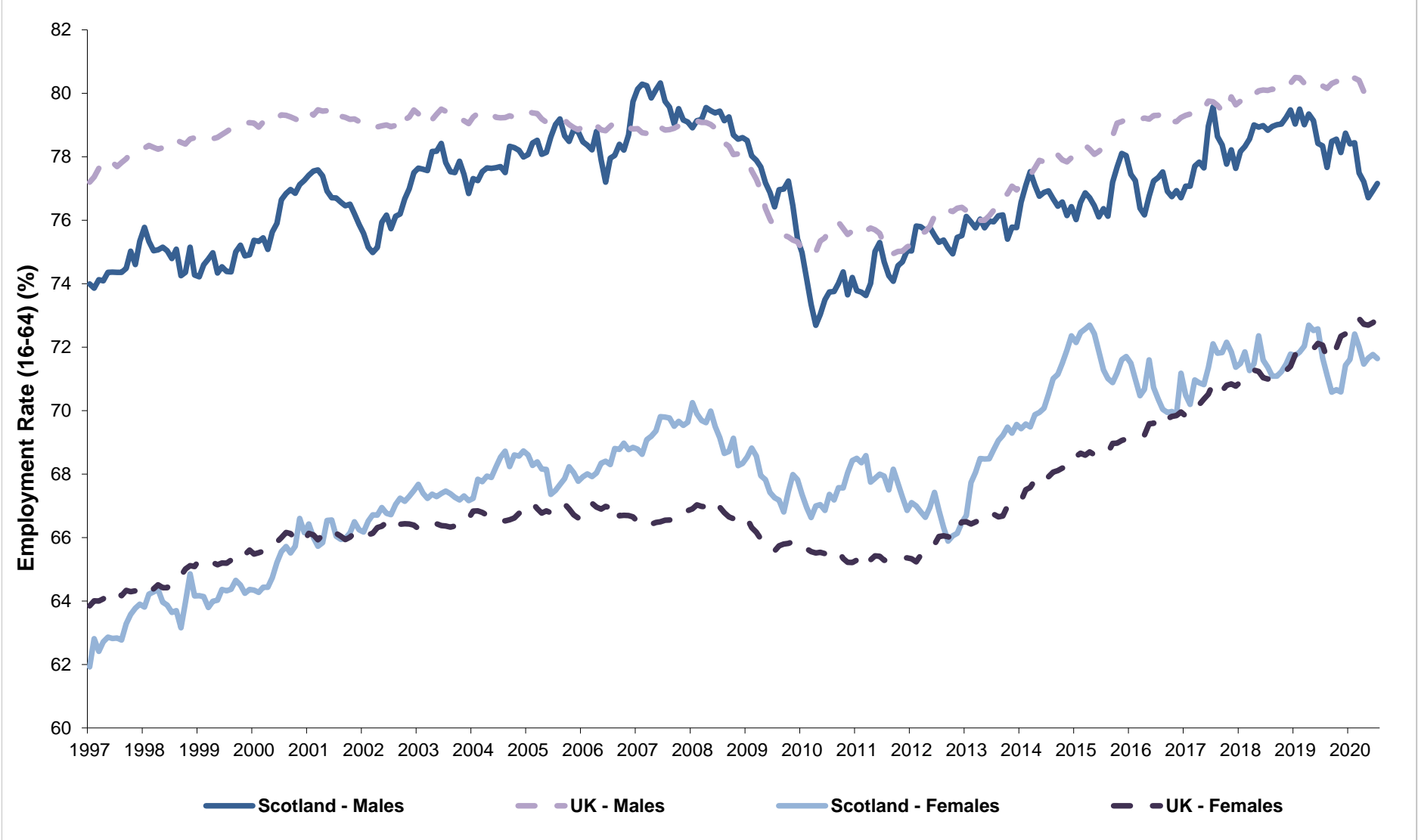
	Gender	Scotland					UK				
		Rate (%)	Change on quarter (%pts)	Change on year (%pts)			Rate (%)	Change on quarter (%pts)	Change on year (%pts)		
Employment Rate*	People	74.3	0.1	↑	-0.6	↓	76.5	0.1	↑	0.4	↑
	Men	77.2	-0.1	↓	-1.2	↓	80.2	0.1	↑	-0.1	↓
	Women	71.6	0.2	↑	0.0	↔	72.9	0.2	↑	0.8	↑
Unemployment Rate**	People	4.6	0.1	↑	0.7	↑	4.1	0.2	↑	0.3	↑
	Men	5.1	0.4	↑	0.7	↑	4.3	0.2	↑	0.3	↑
	Women	4.2	-0.4	↓	0.6	↑	3.8	0.2	↑	0.2	↑
Inactivity Rate*	People	22.0	-0.1	↓	0.1	↑	20.2	-0.3	↓	-0.6	↓
	Men	18.6	-0.4	↓	0.6	↑	16.1	-0.3	↓	-0.2	↓
	Women	25.2	0.1	↑	-0.4	↓	24.1	-0.3	↓	-1.0	↓

Source: Labour Force Survey, ONS

Note: \* Denominator = population of aged 16-64

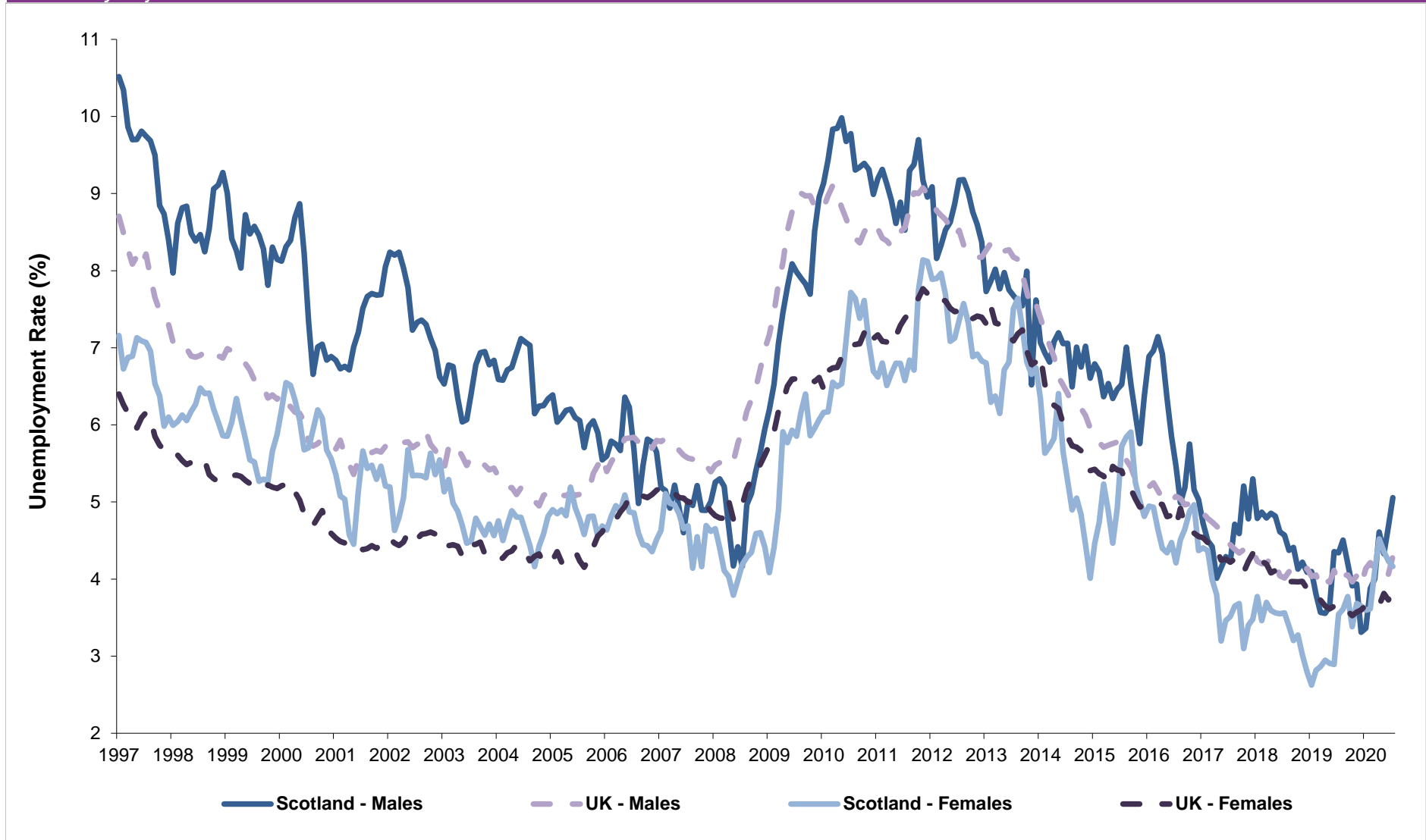
\*\*Denominator = Economically active population

**Chart 1.11: Employment rate by gender (16-64), Scotland and UK, 1997-2020**  
*seasonally adjusted*



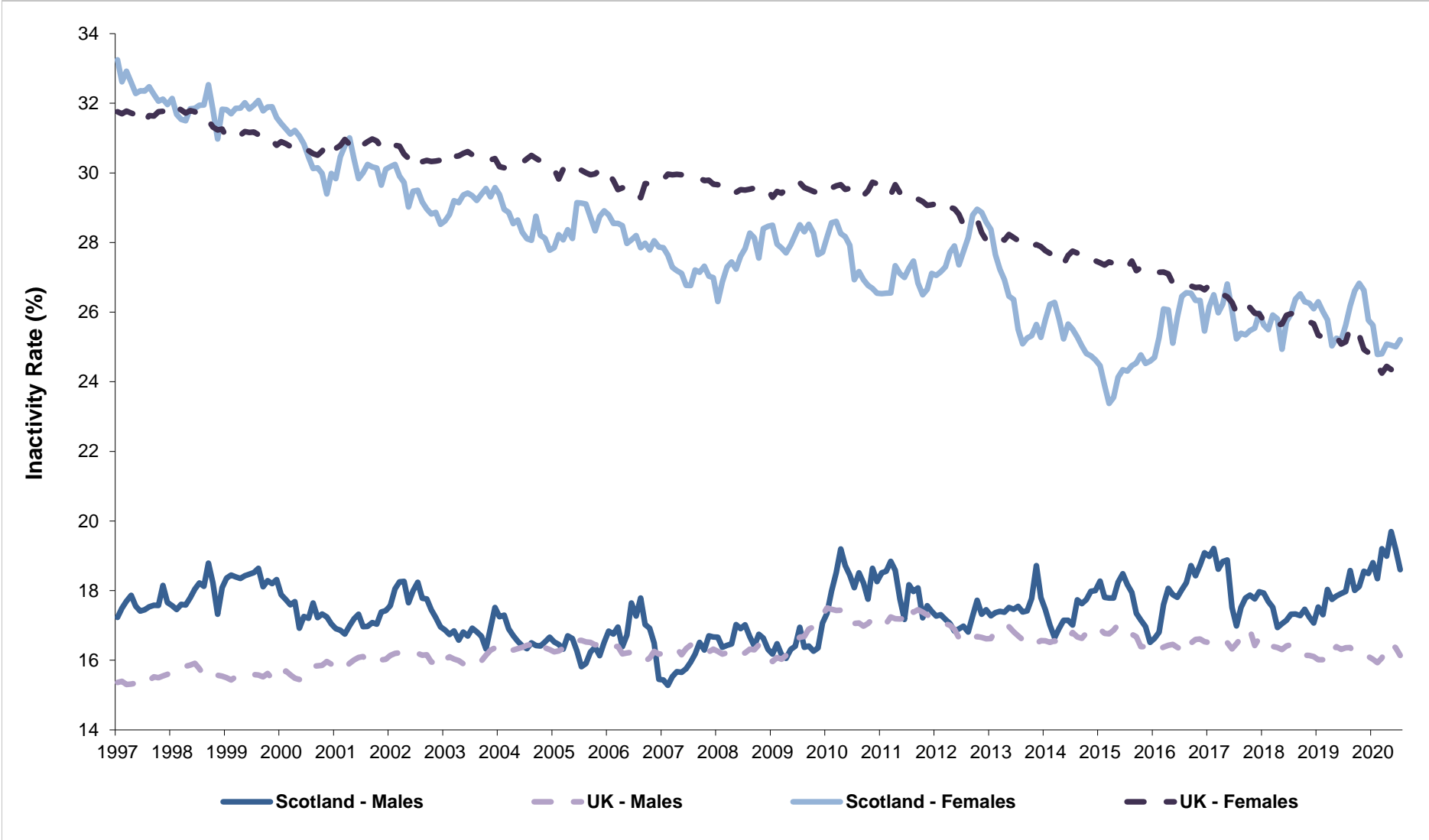
Source: Labour Force Survey, ONS

**Chart 1.12: Unemployment rate by gender (16+), Scotland and UK, 1997-2020**  
*seasonally adjusted*



Source: Labour Force Survey, ONS

**Chart 1.13: Inactivity rate by gender (16-64), Scotland, UK 1997-2020**  
*seasonally adjusted*



Source: Labour Force Survey, ONS

**Table 1.6a: Employment, ILO unemployment and inactivity by age group, Scotland and UK, Annual Population Survey: Jul 2019 - Jun 2020**

	Age Group	Scotland					UK				
		Rate (%)	change on year (%pt)		change on Jul 2009 - Jun 2010 (%pt)		Rate (%)	change on year (%pt)		change on Jul 2009 - Jun 2010 (%pt)	
Employment Rate	16-24	53.2	-5.9	↓	-2.1	↓	54.3	0.3	↑	3.6	↑
	25-34	83.0	1.6	↑	4.6	↑	84.6	1.1	↑	6.9	↑
	35-49	83.7	-0.2	↓	2.6	↑	85.5	0.6	↑	4.7	↑
	50-64	71.4	1.7	↑	7.0	↑	72.6	0.6	↑	8.1	↑
	65+	9.0	0.3	↑	2.7	↑	10.7	0.0	↔	2.9	↑
Unemployment Rate	16-24	9.6	-0.1	↓	-8.5	↓	11.6	0.0	↔	-8.1	↓
	25-34	3.3	-1.0	↓	-4.8	↓	3.4	-0.4	↓	-4.2	↓
	35-49	2.4	-0.4	↓	-2.8	↓	2.6	-0.1	↓	-2.9	↓
	50-64	1.9	-1.0	↓	-2.4	↓	2.5	-0.3	↓	-2.1	↓
	65+	*	*	-	*	-	1.5	0.1	↑	-1.1	↓
Inactivity Rate	16-24	41.1	6.6	↑	8.7	↑	38.6	-0.3	↓	1.6	↑
	25-34	14.1	-0.8	↓	-0.6	↓	12.4	-0.8	↓	-3.5	↓
	35-49	14.2	0.6	↑	-0.2	↓	12.3	-0.5	↓	-2.3	↓
	50-64	27.3	-1.0	↓	-5.4	↓	25.5	-0.4	↓	-6.8	↓
	65+	90.9	-0.3	↓	-2.7	↓	89.1	0.0	↔	-2.9	↓

Source: Annual Population Survey, ONS

\* data not available

\*\* Denominator = population in age group

\*\*\* Denominator = Economically active population in age group (where economically active is defined as those in employment plus those who are unemployed)

**Table 1.6b: Employment, ILO unemployment and inactivity by age group, Scotland and UK, Labour Force Survey: May-Jul 2020**

Official Statistics - not seasonally adjusted

	Age Group	Scotland					UK				
		Rate (%)	Change on year (%pt)		Change on 2008 (%pt)		Rate (%)	Change on year (%pt)		Change on 2008 (%pt)	
Employment Rate**	16-24	54.0	-4.4	↓	-6.4	↓	52.5	-2.0	↓	-4.3	↓
	25-34	80.3	-4.1	↓	-0.2	↓	86.2	1.9	↑	5.5	↑
	35-49	85.0	-0.1	↓	0.2	↑	86.1	0.8	↑	3.7	↑
	50-64	71.8	2.9	↑	6.1	↑	72.9	0.1	↑	7.3	↑
	65+	9.3	0.1	↑	3.9	↑	10.6	-0.5	↓	3.2	↑
Unemployment Rate***	16-24	14.5	4.5	↑	1.2	↑	14.1	2.0	↑	-1.3	↓
	25-34	4.8	0.3	↑	0.7	↑	3.4	0.0	↔	-1.5	↓
	35-49	2.6	0.0	↔	0.1	↑	2.4	0.0	↔	-1.3	↓
	50-64	3.2	0.6	↑	1.2	↑	2.7	0.0	↔	-0.4	↓
	65+	2.0	*	-	*	-	1.6	0.5	↑	-0.1	↓
Inactivity Rate**	16-24	36.8	1.8	↑	6.5	↑	38.9	0.9	↑	6.1	↑
	25-34	15.7	4.1	↑	-0.4	↓	10.8	-2.0	↓	-4.4	↓
	35-49	12.7	0.1	↑	-0.3	↓	11.7	-0.9	↓	-2.7	↓
	50-64	25.8	-3.4	↓	-7.2	↓	25.1	-0.1	↓	-7.2	↓
	65+	90.5	-0.2	↓	-4.0	↓	89.3	0.4	↑	-3.3	↓

Source: Labour Force Survey, ONS

\* data not available

\*\* Denominator = population in age group

\*\*\* Denominator = Economically active population in age group (where economically active is defined as those in employment plus those who are unemployed).

**Quality indicator**

Shaded estimates are based on a small sample size. This may result in a less precise estimates, which should be used with caution.

Unshaded estimates are based on a larger sample size. This is likely to result in estimates of higher precision, although they will still be subject to some sampling variability.

**Note on data sources:** The Labour Force Survey (LFS) is a survey of households collected and published by the Office for National Statistics (ONS). Further information on reliability can be accessed in the ONS publication at:

<https://www.ons.gov.uk/employmentandlabourmarket/peopleinwork/employmentandemployeetypes/methodologies/measuringandreportingreliabilityoflabourforcesurveyandannualpopulationurveyestimates>

The Annual Population Survey estimates are classified as National Statistics as they are based on a larger sample size, but are not as current as LFS estimates. Regional estimates for the unemployment rate maybe quite volatile, which needs to be allowed for when considering the pattern of change over time and sample sizes are also smaller for sub groups such as 16-24 year olds which can also affect volatility. Sampling variability information is published at:

<https://www.ons.gov.uk/employmentandlabourmarket/peopleinwork/employmentandemployeetypes/datasets/samplingvariabilityandrevisionssummaryforregionallabourmarketstatistics02>

**Table 2.1a: Employment, ILO unemployment and inactivity for 16-24 age group, Scotland and UK, Annual Population Survey (APS): Jul 2019 - Jun 2020**

	Level ('000)					Rate				
	Level	Change on year		change on Jul 2009 - Jun 2010		Rate (%)	Change on year (%pts)		change on Jul 2009 - Jun 2010	
<b>Employment*</b>										
Scotland	299	-39	↓	-42	↓	53.2	-5.9	↓	-2.1	↓
UK	3,739	-17	↓	50	↑	54.3	0.3	↑	3.6	↑
<b>ILO Unemployment **</b>										
Scotland	32	-5	↓	-43	↓	9.6	-0.1	↓	-8.5	↓
UK	490	-1	↓	-413	↓	11.6	0.0	↔	-8.1	↓
<b>Inactivity *</b>										
Scotland	231	34	↑	31	↑	41.1	6.6	↑	8.7	↑
UK	2,657	-46	↓	-33	↓	38.6	-0.3	↓	1.6	↑

Source: Annual Population Survey (APS), ONS

Notes: \*denominator = 16-24 population; \*\* denominator = economically active population aged 16-24

**Table 2.1b: Employment, ILO unemployment and inactivity for 16-24 age group, Scotland and UK, Labour Force Survey (LFS): May-Jul 2020**  
*not seasonally adjusted (Official Statistics)*

	Level ('000)					Rate				
	Level	Change on year		Change on 2008		Rate (%)	Change on year (%pts)		Change on 2008 (%pt)	
<b>Employment*</b>										
Scotland	301	-30	↓	-65	↓	54.0	-4.4	↓	-6.4	↓
UK	3,601	-163	↓	-506	↓	52.5	-2.0	↓	-4.3	↓
<b>ILO Unemployment **</b>										
Scotland	51	14	↑	-5	↓	14.5	4.5	↑	1.2	↑
UK	590	73	↑	-157	↓	14.1	2.0	↑	-1.3	↓
<b>Inactivity *</b>										
Scotland	205	7	↑	21	↑	36.8	1.8	↑	6.5	↑
UK	2,673	48	↑	296	↑	38.9	0.9	↑	6.1	↑

Source: Labour Force Survey (LFS), ONS

\*rate based on total population aged 16-24

\*\*rate=ILO unemployed/(employed+ ILO unemployed)

#### Quality indicator

Shaded estimates are based on a small sample size. This may result in a less precise estimates, which should be used with caution.

Unshaded estimates are based on a larger sample size. This is likely to result in estimates of higher precision, although they will still be subject to some sampling variability.

**Note on data sources:** The Labour Force Survey (LFS) is a survey of households collected and published by the Office for National Statistics (ONS). Further information on reliability can be accessed in the ONS publication at: <https://www.ons.gov.uk/employmentandlabourmarket/peopleinwork/employmentandemployeetypes/methodologies/measuringandreportingreliabilityoflabourforcesurveyandannualpopulationsurveyestimates>

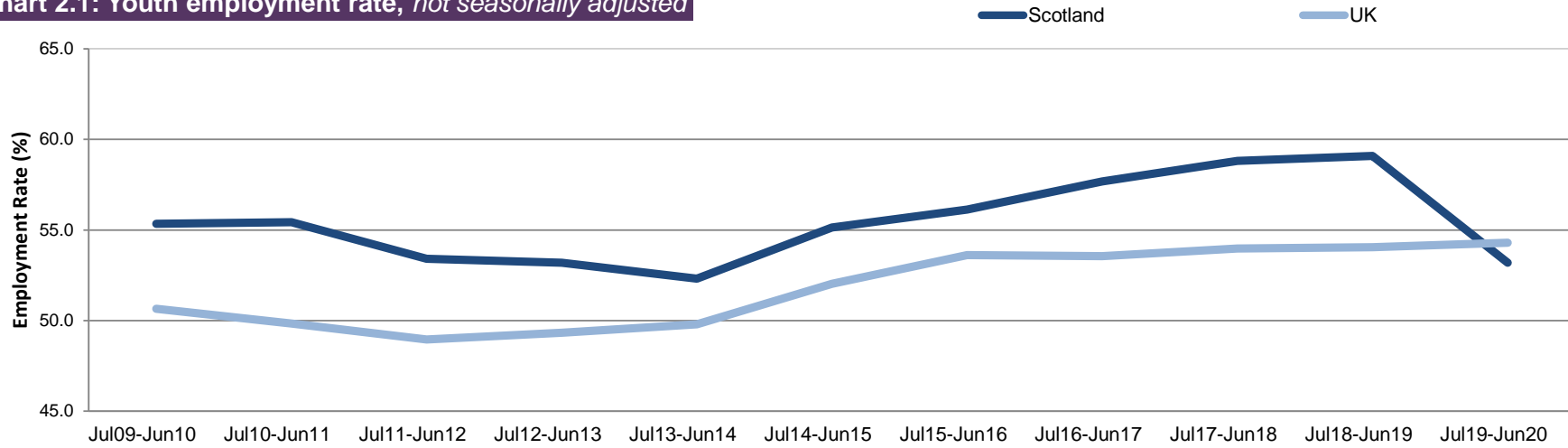
The Annual Population Survey estimates are classified as National Statistics as they are based on a larger sample size, but are not as current as LFS estimates. Regional estimates for the unemployment rate maybe quite volatile, which needs to be allowed for when considering the pattern of change over time and sample sizes are also smaller for sub groups such as 16-24 year olds which can also affect volatility. Sampling variability information is published at:

<https://www.ons.gov.uk/employmentandlabourmarket/peopleinwork/employmentandemployeetypes/datasets/samplingvariabilityandrevisonsummaryforregionallabourmarketstatistics02>

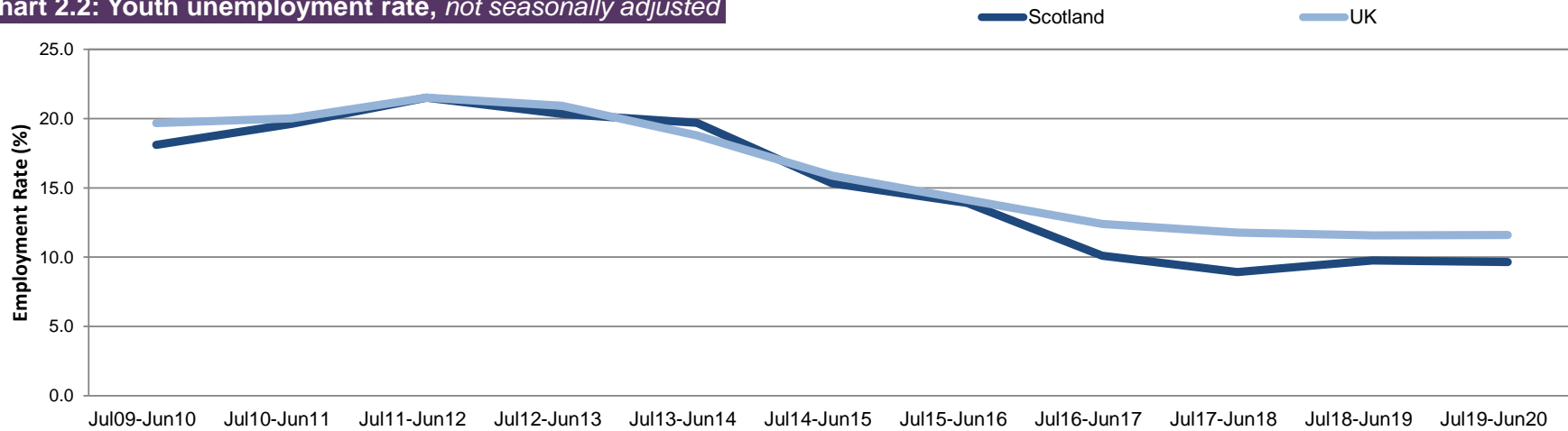


**Charts 2.1 and 2.2: Youth employment and unemployment, Scotland and UK (APS)**

**Chart 2.1: Youth employment rate, *not seasonally adjusted***



**Chart 2.2: Youth unemployment rate, *not seasonally adjusted***



Source: Annual Population Survey, ONS

**Table 2.2: Employment, ILO unemployment and inactivity for 16-24 age group by gender, Scotland and UK (APS), Jul 2019 - Jun 2020**

**Scotland**

	Level ('000)					Rate				
	Level	Change on year		change on Jul 2009 - Jun 2010		Rate (%)	Change on year (%pts)		change on Jul 2009 - Jun 2010	
<b>Employment*</b>										
Male	150	-20	↓	-20	↓	53.2	-6.0	↓	-2.4	↓
Female	148	-19	↓	-22	↓	53.2	-5.7	↓	-1.9	↓
<b>ILO Unemployment **</b>										
Male	15	-6	↓	-30	↓	9.1	-1.8	↓	-11.7	↓
Female	17	1	↑	-14	↓	10.2	1.6	↑	-5.0	↓
<b>Inactivity *</b>										
Male	117	21	↑	26	↑	41.4	8.0	↑	11.6	↑
Female	114	13	↑	6	↑	40.8	5.2	↑	5.8	↑

**UK**

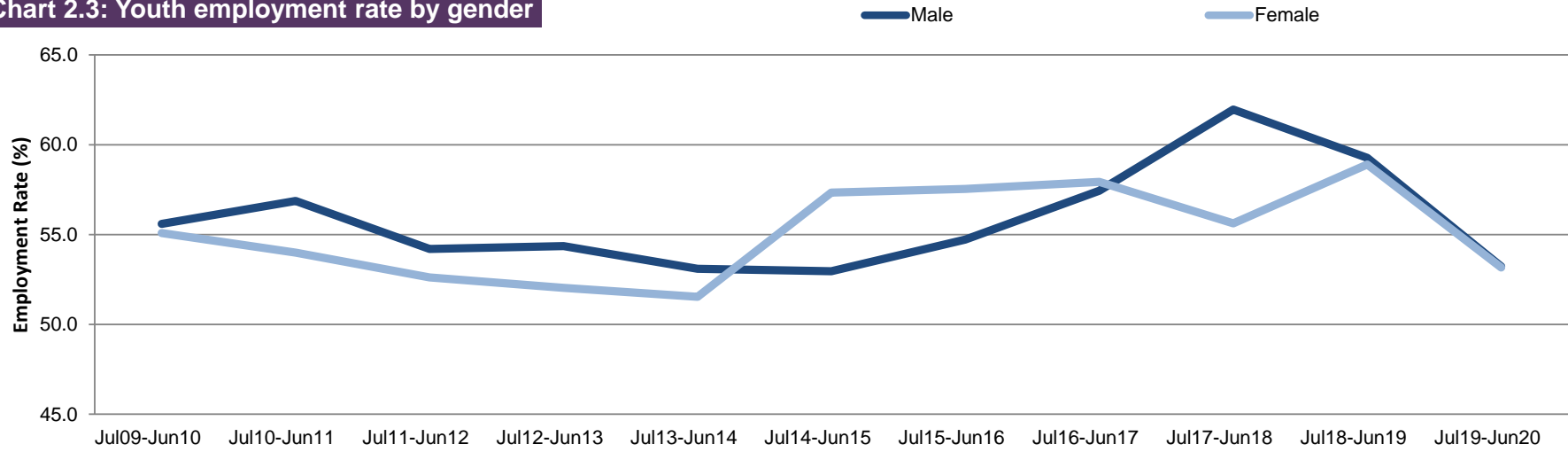
	Level ('000)					Rate				
	Level	Change on year		change on Jul 2009 - Jun 2010		Rate (%)	Change on year (%pts)		change on Jul 2009 - Jun 2010	
<b>Employment*</b>										
Male	1,903	-8	↓	60	↑	54.1	0.3	↑	3.6	↑
Female	1,835	-9	↓	-10	↓	54.5	0.2	↑	3.7	↑
<b>ILO Unemployment **</b>										
Male	276	-14	↓	-264	↓	12.7	-0.5	↓	-10.0	↓
Female	214	12	↑	-149	↓	10.4	0.6	↑	-6.0	↓
<b>Inactivity *</b>										
Male	1,339	-11	↓	72	↑	38.0	0.0	↔	3.3	↑
Female	1,318	-34	↓	-105	↓	39.1	-0.7	↓	-0.1	↓

Source: Annual Population Survey, ONS

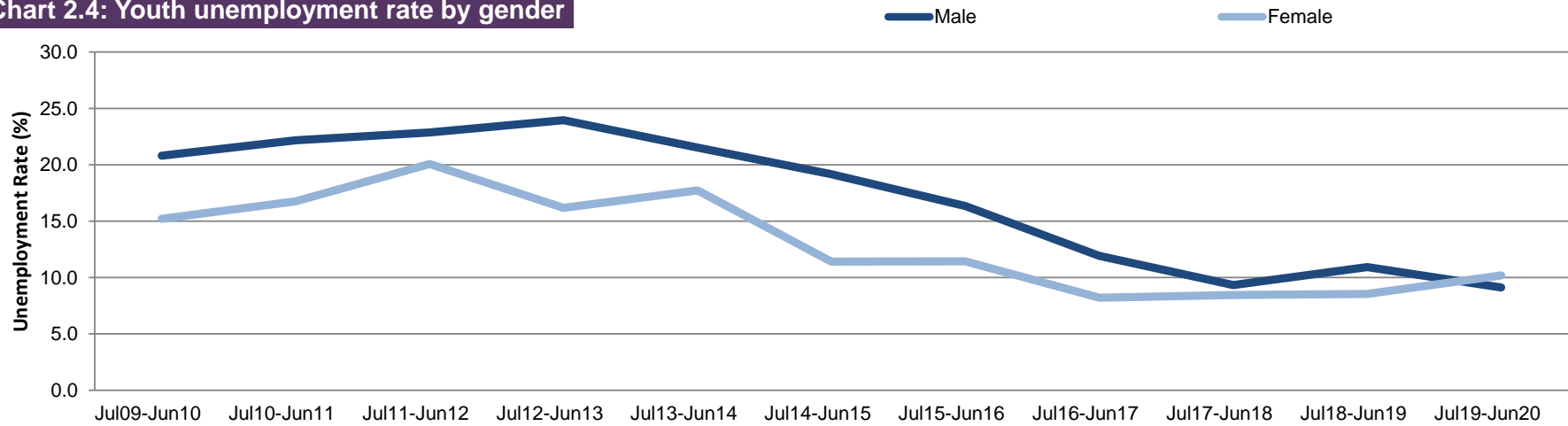
Notes: \*denominator = 16-24 population; \*\* denominator = economically active population aged 16-24

**Charts 2.3 and 2.4: Youth employment and unemployment by gender, Scotland (APS)**

**Chart 2.3: Youth employment rate by gender**



**Chart 2.4: Youth unemployment rate by gender**



Source: Annual Population Survey, ONS

**Table 2.3: Youth Unemployment (16-24) by Government Office Region (LFS), May-Jul 2020**  
not seasonally adjusted (Official Statistics)

	Level (000's)	change on year		change on 2008		Rate (%)	%pt change on year		%pt change on 2008	
North East	31	12	↑	-3	↓	16.1	4.7	↑	-1.3	↓
North West	47	-22	↓	-49	↓	9.8	-5.0	↓	-6.8	↓
Yorkshire and The Humber	44	-8	↓	-32	↓	11.3	-2.5	↓	-5.7	↓
East Midlands	49	-4	↓	-18	↓	15.0	-0.6	↓	-3.5	↓
West Midlands	60	6	↑	-10	↓	16.4	2.5	↑	-0.1	↓
East	47	13	↑	-17	↓	12.8	3.8	↑	-2.1	↓
London	95	7	↑	-10	↓	20.1	1.2	↑	1.0	↑
South East	72	25	↑	-11	↓	12.3	4.5	↑	-0.1	↓
South West	60	29	↑	17	↑	16.2	8.5	↑	5.9	↑
Wales	26	1	↑	-12	↓	13.7	2.6	↑	-2.0	↓
Northern Ireland	9	-1	↓	-7	↓	8.2	-1.0	↓	-4.1	↓
<b>Scotland</b>	51	14	↑	-5	↓	14.5	4.5	↑	1.2	↑
<b>United Kingdom</b>	590	73	↑	-157	↓	14.1	2.0	↑	-1.3	↓
England	504	59	↑	-133	↓	14.2	1.8	↑	-1.5	↓

Source: Labour Force Survey, ONS

**Table 2.4: Youth Employment (16-24) by UK Countries and Regions (LFS), May-Jul 2020**  
not seasonally adjusted (Official Statistics)

	Level (000's)	change on year		change on 2008		Rate (%)	%pt change on year		%pt change on 2008	
North East	164	12	↑	0	↔	57.1	4.8	↑	5.0	↑
North West	429	35	↑	-47	↓	56.4	5.0	↑	0.3	↑
Yorkshire and The Humber	343	22	↑	-27	↓	56.3	3.8	↑	-1.1	↓
East Midlands	276	-9	↓	-17	↓	53.8	-1.3	↓	-2.5	↓
West Midlands	305	-26	↓	-50	↓	47.8	-3.9	↓	-6.6	↓
East	322	-28	↓	-45	↓	55.5	-4.6	↓	-5.0	↓
London	378	-1	↓	-68	↓	41.0	-0.1	↓	-5.3	↓
South East	514	-41	↓	-73	↓	56.9	-4.3	↓	-6.9	↓
South West	307	-59	↓	-58	↓	55.2	-10.3	↓	-9.5	↓
Wales	161	-36	↓	-39	↓	47.9	-10.2	↓	-7.5	↓
Northern Ireland	100	-1	↓	-16	↓	50.2	-0.1	↓	-0.9	↓
<b>Scotland</b>	301	-30	↓	-65	↓	54.0	-4.4	↓	-6.4	↓
<b>United Kingdom</b>	3,601	-163	↓	-506	↓	52.5	-2.0	↓	-4.3	↓
England	3,039	-96	↓	-386	↓	52.7	-1.4	↓	-4.1	↓

Source: Labour Force Survey, ONS

**Quality indicator**

Shaded estimates are based on a small sample size. This may result in a less precise estimates, which should be used with caution.

Unshaded estimates are based on a larger sample size. This is likely to result in estimates of higher precision, although they will still be subject to some sampling variability.

**Note on data sources:** The Labour Force Survey (LFS) is a survey of households collected and published by the Office for National Statistics (ONS). Further information on reliability can be accessed in the ONS publication at: <https://www.ons.gov.uk/employmentandlabourmarket/peopleinwork/employmentandemployeetypes/methodologies/measuringandreportingreliabilityoflabourforcesurveyandannualpopulationsurveyestimates>

The Annual Population Survey estimates are classified as National Statistics as they are based on a larger sample size, but are not as current as LFS estimates. Regional estimates for the unemployment rate may be quite volatile, which needs to be allowed for when considering the pattern of change over time and sample sizes are also smaller for sub groups such as 16-24 year olds which can also affect volatility. Sampling variability information is published at: <https://www.ons.gov.uk/employmentandlabourmarket/peopleinwork/employmentandemployeetypes/datasets/samplingvariabilityandrevisionssummaryforregionallabourmarketstatistics02>

**Table 3.1a: Employment rates and levels of the population aged 16-64 by disability status, Scotland 2014-2020 (APS)**

	Equality Act Disabled Employment		Not Equality Act Disabled Employment		Disabled Employment Rate Gap (%pt)
	Rate	Level (000s)	Rate	Level (000s)	
Jul 2013 - Jun 2014	40.8	251	78.7	2,189	37.9
Jul 2014 - Jun 2015	41.2	246	79.7	2,235	38.5
Jul 2015 - Jun 2016	42.9	275	80.0	2,212	37.1
Jul 2016 - Jun 2017	43.4	287	80.7	2,224	37.3
Jul 2017 - Jun 2018	46.0	300	81.3	2,253	35.3
Jul 2018 - Jun 2019	46.9	322	81.7	2,234	34.8
Jul 2019 - Jun 2020	48.6	339	81.4	2,215	32.8
<i>Change on year</i>	<i>1.7</i>	<i>17</i>	<i>-0.3</i>	<i>-19</i>	<i>-2.0</i>

Source: Annual Population Survey, ONS

**Table 3.1b: Employment rates and levels of the population aged 16-64 by disability status, Scotland 2013-2020 (LFS)**

*not seasonally adjusted*

	Equality Act Disabled Employment		Not Equality Act Disabled Employment		Disabled Employment Rate Gap (%pt)
	Rate	Level (000s)	Rate	Level (000s)	
Apr-Jun 2013	40.8	245	78.9	2,205	38.1
Apr-Jun 2014	41.7	241	80.0	2,255	38.4
Apr-Jun 2015	43.7	272	81.0	2,255	37.2
Apr-Jun 2016	40.9	250	81.4	2,277	40.5
Apr-Jun 2017	43.0	262	82.4	2,320	39.4
Apr-Jun 2018	47.3	309	82.2	2,271	34.9
Apr-Jun 2019	48.6	337	82.7	2,258	34.1
Apr-Jun 2020	51.7	362	81.0	2,199	29.3
<i>Change on year</i>	<i>3.0</i>	<i>25</i>	<i>-1.7</i>	<i>-58</i>	<i>-4.8</i>

Source: Labour Force Survey, ONS

Questions used to derive current disability status of a person were changed in the April-June 2013 dataset. Subsequent datasets are therefore not directly comparable to equivalent periods in earlier years. See Notes (p43) for further information.

**Note on data sources:** Information is shown from the Labour Force Survey (LFS) and the Annual Population Survey (APS) for the same measure. Although the LFS is more timely, the APS is based on a larger sample size and therefore has a higher degree of reliability.

**Table 3.2: Employment rates and levels of the population aged 16-64 by ethnicity and gender, Scotland, 2012 - 2020**  
*not seasonally adjusted*

**All**

	White Employment		Minority Ethnic Employment		Ethnicity Employment Rate Gap (%pt)
	Rate	Level (000s)	Rate	Level (000s)	
Jul 2011 - Jun 2012	71.2	2,344	59.1	79	12.1
Jul 2012 - Jun 2013	70.9	2,332	57.8	74	13.1
Jul 2013 - Jun 2014	72.2	2,373	61.3	76	10.9
Jul 2011 - Jun 2012	73.6	2,402	56.6	84	17.0
Jul 2011 - Jun 2012	73.6	2,377	59.3	105	14.3
Jul 2011 - Jun 2012	74.2	2,417	58.4	102	15.8
Jul 2011 - Jun 2012	75.4	2,468	57.6	96	17.7
Jul 2011 - Jun 2012	75.5	2,467	58.8	103	16.7
Jul 2011 - Jun 2012	75.5	2,443	60.9	124	14.6
<i>Change on year</i>	<i>0.0</i>	<i>-24</i>	<i>2.1</i>	<i>21</i>	<i>-2.1</i>

**Male**

	White Employment		Minority Ethnic Employment		Ethnicity Employment Rate Gap (%pt)
	Rate	Level (000s)	Rate	Level (000s)	
Jul 2011 - Jun 2012	74.9	1,202	73.0	51	2.0
Jul 2012 - Jun 2013	74.6	1,198	69.1	44	5.5
Jul 2013 - Jun 2014	75.8	1,215	70.9	45	5.0
Jul 2014 - Jun 2015	76.5	1,218	69.8	51	6.7
Jul 2015 - Jun 2016	76.4	1,206	74.4	63	2.0
Jul 2016 - Jun 2017	77.3	1,233	70.3	59	7.0
Jul 2017 - Jun 2018	78.9	1,264	69	56	9.9
Jul 2018 - Jun 2019	78.3	1,251	67.9	56	10.4
Jul 2019 - Jun 2020	78	1,233	72.0	72	6.0
<i>Change on year</i>	<i>-0.3</i>	<i>-18</i>	<i>4.1</i>	<i>15</i>	<i>-4.5</i>

**Female**

	White Employment		Minority Ethnic Employment		Ethnicity Employment Rate Gap (%pt)
	Rate	Level (000s)	Rate	Level (000s)	
Jul 2011 - Jun 2012	67.6	1,142	43.7	28	23.9
Jul 2012 - Jun 2013	67.4	1,134	46.7	30	20.7
Jul 2013 - Jun 2014	68.8	1,158	51.4	31	17.4
Jul 2014 - Jun 2015	70.9	1,185	43.8	33	27.1
Jul 2015 - Jun 2016	70.9	1,171	45.4	42	25.5
Jul 2016 - Jun 2017	71.2	1,184	47.6	43	23.6
Jul 2017 - Jun 2018	71.9	1,204	47.0	40	25
Jul 2018 - Jun 2019	72.8	1,215	50.5	47	22.3
Jul 2019 - Jun 2020	73.1	1,210	50.2	52	22.9
<i>Change on year</i>	<i>0.3</i>	<i>-6</i>	<i>-0.4</i>	<i>5</i>	<i>0.6</i>

Source: Annual Population Survey, ONS (Jul-Jun datasets)

**Table 3.3: Employment patterns, Scotland, May-Jul 2020, (Thousands)**  
*not seasonally adjusted*

	May-Jul 2020	Change on 2008 (000s)			Change on year (000s)	
Total‡	2,667	120	↑	-19	↓	
Employees‡	2,328	81	↑	-14	↓	
Self employed‡	327	43	↑	-5	↓	
Unpaid family workers	10	1	↑	4	↑	
Government-supported training and employment programmes	4	-5	↓	-3	↓	
Full-time workers	1,995	76	↑	23	↑	
Part-time workers	670	44	↑	-37	↓	
Workers with second jobs	87	-16	↓	-4	↓	
Temporary workers	135	15	↑	13	↑	
<b>All males in employment</b>						
Total‡	1,358	21	↑	-22	↓	
Employees‡	1,150	14	↑	-10	↓	
Self employed‡	200	6	↑	-11	↓	
Unpaid family workers	5	3	↑	3	↑	
Government-supported training and employment programmes	3	-2	↓	-4	↓	
Full-time workers	1,187	-4	↓	-2	↓	
Part-time workers	170	24	↑	-15	↓	
Workers with second jobs	40	-3	↓	-1	↓	
Temporary workers	57	2	↑	7	↑	
<b>All females in employment</b>						
Total‡	1,310	99	↑	3	↑	
Employees‡	1,177	67	↑	-4	↓	
Self employed‡	127	37	↑	5	↑	
Unpaid family workers	4	-2	↓	1	↑	
Government-supported training and employment programmes	*	*	■	*	■	
Full-time workers	808	80	↑	25	↑	
Part-time workers	501	20	↑	-22	↓	
Workers with second jobs	48	-14	↓	-4	↓	
Temporary workers	78	13	↑	6	↑	

Source: Labour Force Survey, ONS

‡ Includes people who did not state whether they worked part-time or full-time.

\* Estimate suppressed as below reliability threshold.

**Quality indicator**

Shaded estimates are based on a small sample size. This may result in a less precise estimates, which should be used with caution.

Unshaded estimates are based on a larger sample size. This is likely to result in estimates of higher precision, although they will still be subject to some sampling variability.

**Table 3.4: Underemployment, Scotland and UK, 2013-2020**  
*not seasonally adjusted*

	UK		Scotland	
	Rate (%)	Level (000s)	Rate (%)	Level (000s)
Jul 2012 - Jun 2013	10.0	2,925	9.8	240
Jul 2013 - Jun 2014	9.6	2,868	9.2	230
Jul 2014 - Jun 2015	8.8	2,679	8.6	218
Jul 2015 - Jun 2016	8.5	2,615	9.3	237
Jul 2016 - Jun 2017	7.9	2,477	8.2	211
Jul 2017 - Jun 2018	7.4	2,355	7.8	203
Jul 2018 - Jun 2019	6.9	2,218	7.3	192
Jul 2019 - Jun 2020	7.3	2,371	7.2	189
<i>change on year (%pt for rate)</i>	<i>0.4</i>	<i>153</i>	<i>-0.1</i>	<i>-3</i>
<i>change on Jul 2012 - Jun 2013 (%pt for rate)</i>	<i>-2.7</i>	<i>-554</i>	<i>-2.6</i>	<i>-51</i>

Source: Annual Population Survey, ONS

Notes:

1 - Levels and rates based on working population aged 16 and over

2 - Underemployment rate based on those in employment (excludes those who did not respond to underemployment questions)

3 - Underemployment includes:

- those looking for more hours in their current role at same rate of pay
- those looking for an additional job
- those looking for a replacement job with more hours than their current job.



**Table 3.5: Employment rates by highest qualification held and gender, Scotland and UK, Jul 2019 - Jun 2020**  
*not seasonally adjusted*

	Scotland			UK		
	Jul 2019 - Jun 2020	Change on year (%pt)		Jul 2019 - Jun 2020	Change on year (%pt)	
<b>All</b>						
Degree level and above	84.4	0.1	↑	86.9	0.5	↑
SVQ 4	81.1	0.8	↑	82.0	0.6	↑
SVQ 3	71.8	-3.3	↓	76.1	0.2	↑
SVQ 2	66.9	-1.3	↓	69.3	0.1	↑
SVQ 1	53.8	-1.0	↓	63.9	-1.1	↓
Other qualification	74.0	0.0	↔	75.4	0.3	↑
No qualifications	51.1	1.6	↑	45.4	-0.6	↓
<b>Males</b>						
Degree level and above	86.6	0.4	↑	89.6	0.5	↑
SVQ 4	84.7	1.8	↑	85.8	0.2	↑
SVQ 3	75.9	-4.0	↓	79.6	0.1	↑
SVQ 2	71.5	-1.1	↓	73.4	-1.1	↓
SVQ 1	56.4	-3.1	↓	69.5	-3.0	↓
Other qualification	82.7	2.9	↑	84.2	0.0	↔
No qualifications	54.6	1.7	↑	53.6	-0.8	↓
<b>Females</b>						
Degree level and above	82.7	-0.1	↓	84.5	0.6	↑
SVQ 4	78.1	-0.1	↓	78.7	0.9	↑
SVQ 3	66.3	-2.8	↓	72.0	0.2	↑
SVQ 2	63.1	-1.2	↓	65.5	1.1	↑
SVQ 1	50.8	1.1	↑	57.3	0.9	↑
Other qualification	65.0	-1.9	↓	64.1	0.9	↑
No qualifications	47.1	1.1	↑	36.2	-0.5	↓

Source: Annual Population Survey, ONS

**Table 3.6: Levels of unemployment, employment and economic inactivity (All and excluding full-time education), Scotland 2010-2020**  
*not seasonally adjusted*

	Totals		Unemployment		Employment		Inactivity	
	All (16-64)	(excl. FT Ed.)	All	(excl. FT Ed.)	All	(excl. FT Ed.)	All	(excl. FT Ed.)
Jul 2009 - Jun 2010	3,403	3,086	199	178	2,417	2,291	787	616
Jul 2010 - Jun 2011	3,423	3,106	208	182	2,425	2,300	790	625
Jul 2011 - Jun 2012	3,427	3,105	216	187	2,423	2,304	788	613
Jul 2012 - Jun 2013	3,418	3,089	210	181	2,407	2,294	801	614
Jul 2013 - Jun 2014	3,415	3,085	191	161	2,452	2,338	772	585
Jul 2014 - Jun 2015	3,420	3,077	159	138	2,492	2,364	769	575
Jul 2015 - Jun 2016	3,430	3,116	145	124	2,500	2,386	785	607
Jul 2016 - Jun 2017	3,438	3,120	121	106	2,523	2,406	794	608
Jul 2017 - Jun 2018	3,442	3,130	112	97	2,564	2,455	766	578
Jul 2018 - Jun 2019	3,443	3,141	111	99	2,570	2,455	762	587
Jul 2019 - Jun 2020	3,442	3,104	89	78	2,567	2,444	787	581
<i>Change on year</i>	<i>-1</i>	<i>-37</i>	<i>-22</i>	<i>-21</i>	<i>-3</i>	<i>-11</i>	<i>25</i>	<i>-6</i>
<i>change on Jul 2009 - Jun 2010</i>	<i>39</i>	<i>18</i>	<i>-110</i>	<i>-100</i>	<i>150</i>	<i>153</i>	<i>0</i>	<i>-35</i>

Source: Annual Population Survey, ONS (Jul-Jun datasets)

Notes:

1. Levels rounded to nearest thousand
2. Estimates exclude those whose current educational status was unknown
3. Total for All 16-64 year olds includes those whose current educational status was unknown
4. Levels of employment and unemployment are for all aged 16+. Levels of inactivity are for all aged 16-64.

**Table 3.6 (cont'd): Rates of unemployment, employment and economic inactivity (All and excluding full-time education), Scotland 2010-2020**  
*not seasonally adjusted*

	Unemployment Rate		Employment Rate		Inactivity Rate	
	All	(excl. FT Ed.)	All	(excl. FT Ed.)	All	(excl. FT Ed.)
Jul 2009 - Jun 2010	7.6	7.2	71.0	74.3	23.1	20.0
Jul 2010 - Jun 2011	7.9	7.3	70.9	74.0	23.1	20.1
Jul 2011 - Jun 2012	8.2	7.5	70.7	74.2	23.0	19.8
Jul 2012 - Jun 2013	8.0	7.3	70.4	74.3	23.4	19.9
Jul 2013 - Jun 2014	7.2	6.4	71.8	75.8	22.6	19.0
Jul 2014 - Jun 2015	6.0	5.5	72.9	76.8	22.5	18.7
Jul 2015 - Jun 2016	5.5	4.9	72.9	76.6	22.9	19.5
Jul 2016 - Jun 2017	4.6	4.2	73.4	77.1	23.1	19.5
Jul 2017 - Jun 2018	4.2	3.8	74.5	78.4	22.3	18.5
Jul 2018 - Jun 2019	4.1	3.9	74.7	78.2	22.1	18.7
Jul 2019 - Jun 2020	3.3	3.1	74.6	78.8	22.9	18.7
<i>%pt change on year</i>	<i>-0.8</i>	<i>-0.8</i>	<i>-0.1</i>	<i>0.6</i>	<i>0.7</i>	<i>0.0</i>
<i>%pt change on Jul 2009 - Jun 2010</i>	<i>-4.3</i>	<i>-4.1</i>	<i>3.5</i>	<i>4.5</i>	<i>-0.3</i>	<i>-1.2</i>

Source: Annual Population Survey, ONS (Jul-Jun datasets)

Notes:

1. The unemployment rate is calculated for those aged 16+. Employment and inactivity rates are for ages 16-64.

**Table 4.1: Unemployment by duration, Annual Population Survey, Jul 2019 - Jun 2020**  
*not seasonally adjusted*

<b>Scotland</b>	<b>Level (000s)</b>	<b>Change on year</b>		<b>% Change on year</b>		<b>Change on 2010</b>		<b>% Change on 2010</b>	
Up to 6 months	<b>56</b>	-11	↓	-16.5	↓	-42	↓	-43.2	↓
Over 6 and up to 12 months	<b>12</b>	-2	↓	-16.5	↓	-34	↓	-74.2	↓
Over 1 year up to 2 years	<b>10</b>	-3	↓	-20.4	↓	-23	↓	-70.4	↓
2 years or more	<b>13</b>	-7	↓	-34.3	↓	-10	↓	-44.5	↓

<b>UK</b>	<b>Level (000s)</b>	<b>Change on year</b>		<b>% Change on year</b>		<b>Change on 2010</b>		<b>% Change on 2010</b>	
Up to 6 months	<b>847</b>	18	↑	2.2	↑	-386	↓	-31.3	↓
Over 6 and up to 12 months	<b>176</b>	-9	↓	-5.1	↓	-330	↓	-65.2	↓
Over 1 year up to 2 years	<b>136</b>	-29	↓	-17.5	↓	-275	↓	-66.8	↓
2 years or more	<b>136</b>	-39	↓	-22.3	↓	-129	↓	-48.6	↓

Source: Annual Population Survey, ONS

Note: Levels based on persons aged 16 and over

**Table 4.2: Model-based unemployment levels and rates by local authority**  
*not seasonally adjusted*

	Apr 2019-Mar 2020		Change on year				Change on Apr 2009-Mar 2010			
	Rate	Level	Rate (%pt)		Level Change	Rate (%pt)		Level Change		
Aberdeen City	2.5	3,300	-2.4	↓	-3,000	↓	-1.8	↓	-2,100	↓
Aberdeenshire	2.2	3,100	-0.4	↓	-600	↓	-0.9	↓	-1,200	↓
Angus	2.8	1,600	-0.9	↓	-500	↓	-3.0	↓	-1,700	↓
Argyll and Bute	2.7	1,100	-0.4	↓	-200	↓	-3.1	↓	-1,400	↓
City of Edinburgh	2.4	6,800	-1.4	↓	-4,200	↓	-4.4	↓	-9,800	↓
Clackmannanshire	3.6	900	-0.7	↓	-200	↓	-4.3	↓	-1,200	↓
Dumfries and Galloway	2.9	2,000	-0.1	↓	-100	↓	-2.7	↓	-2,200	↓
Dundee City	5.0	3,600	-0.8	↓	-400	↓	-4.4	↓	-3,300	↓
East Ayrshire	4.5	2,600	-1.0	↓	-600	↓	-5.0	↓	-3,200	↓
East Dunbartonshire	2.3	1,200	-0.6	↓	-400	↓	-3.9	↓	-2,100	↓
East Lothian	2.5	1,400	-1.1	↓	-600	↓	-3.3	↓	-1,500	↓
East Renfrewshire	2.4	1,100	-1.1	↓	-500	↓	-3.6	↓	-1,500	↓
Falkirk	3.6	2,900	-0.2	↓	-200	↓	-3.7	↓	-2,900	↓
Fife	4.0	7,000	-0.6	↓	-1,500	↓	-4.1	↓	-7,800	↓
Glasgow City	4.5	13,800	-1.0	↓	-3,100	↓	-6.7	↓	-17,300	↓
Highland	2.3	2,800	-0.6	↓	-800	↓	-2.1	↓	-2,700	↓
Inverclyde	4.6	1,600	-0.4	↓	-300	↓	-4.2	↓	-1,900	↓
Midlothian	2.5	1,200	-1.0	↓	-500	↓	-4.0	↓	-1,600	↓
Moray	2.9	1,400	-0.8	↓	-400	↓	-1.7	↓	-900	↓
Na h-Eileanan Siar	2.1	300	-0.4	↓	0	↔	-3.8	↓	-500	↓
North Ayrshire	4.9	3,000	-0.9	↓	-700	↓	-5.9	↓	-4,000	↓
North Lanarkshire	3.9	6,700	-0.5	↓	-1,100	↓	-5.4	↓	-9,300	↓
Orkney Islands	1.6	200	-0.4	↓	-100	↓	-0.9	↓	-100	↓
Perth and Kinross	2.4	1,900	-0.5	↓	-400	↓	-2.1	↓	-1,300	↓
Renfrewshire	3.6	3,300	-1.2	↓	-1,000	↓	-4.6	↓	-3,800	↓
Scottish Borders	2.9	1,600	-0.3	↓	-200	↓	-2.5	↓	-1,400	↓
Shetland Islands	1.9	200	-0.2	↓	-100	↓	-1.1	↓	-200	↓
South Ayrshire	3.5	1,800	-1.0	↓	-400	↓	-4.6	↓	-2,500	↓
South Lanarkshire	3.0	5,000	-1.0	↓	-1,600	↓	-4.7	↓	-7,300	↓
Stirling	3.1	1,400	-0.6	↓	-300	↓	-4.2	↓	-1,800	↓
West Dunbartonshire	4.2	1,800	-0.6	↓	-400	↓	-5.7	↓	-2,700	↓
West Lothian	2.9	2,800	-1.0	↓	-900	↓	-4.5	↓	-3,900	↓
<b>Scotland</b>	<b>3.3</b>	<b>89,300</b>	<b>-0.8</b>	<b>↓</b>	<b>-25,000</b>	<b>↓</b>	<b>-4.0</b>	<b>↓</b>	<b>-105,300</b>	<b>↓</b>

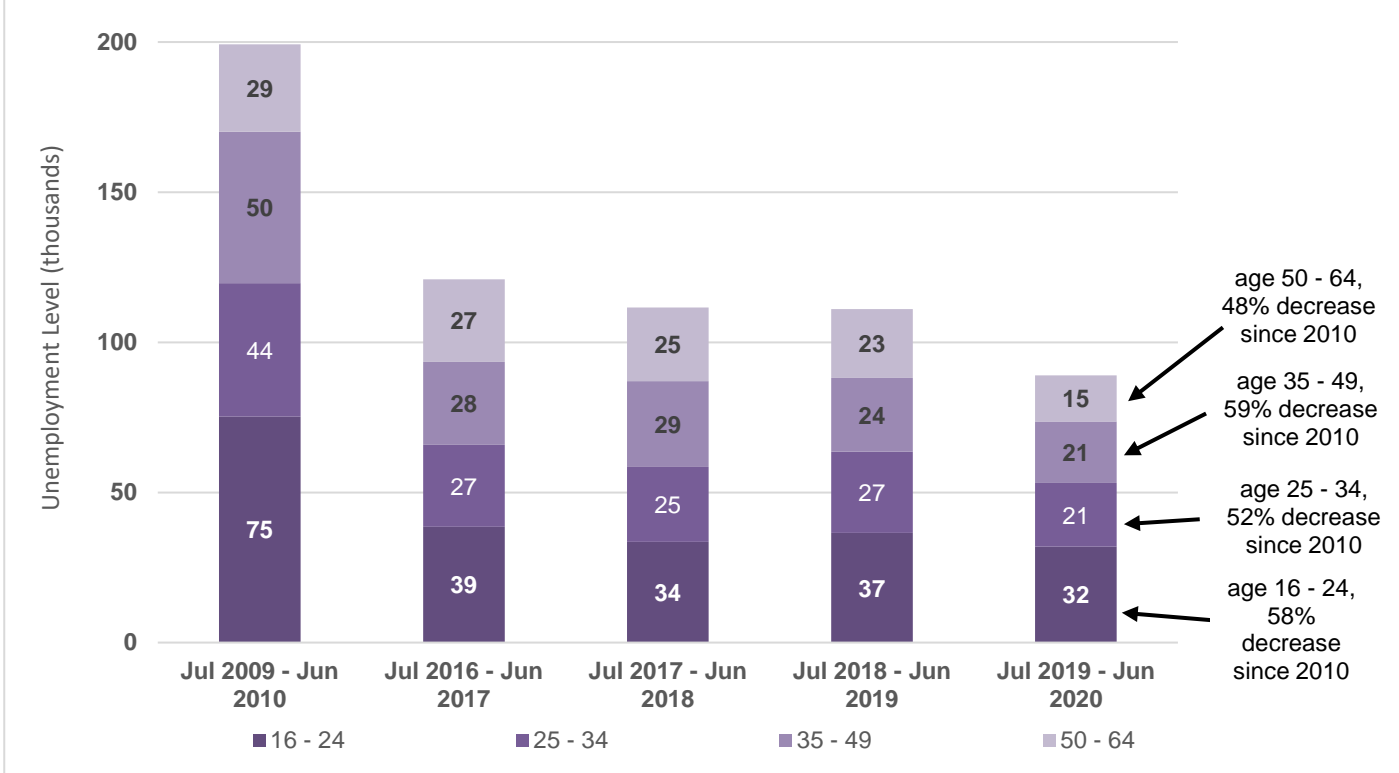
Sources: Annual Population Survey (ONS), Claimant Count (ONS)

Notes:

\* Estimate and confidence interval unreliable since the group sample size is small (3-9).

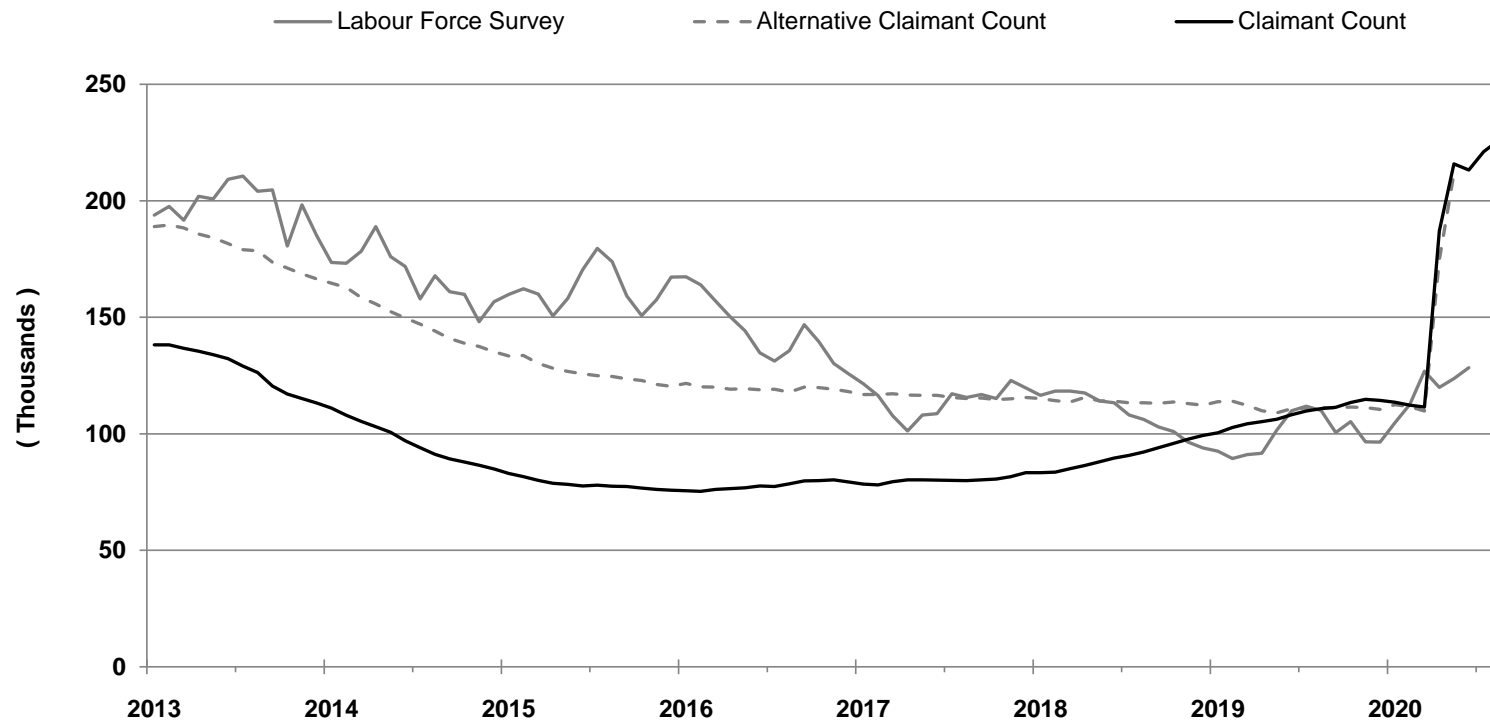
1. Levels rounded to the nearest hundred.
2. Proportions are calculated on unrounded figures.
3. Totals may not equal the sum of individual parts due to rounding.

**Chart 4.1: ILO unemployment levels by age-group (16-64), Scotland**  
*not seasonally adjusted*



Source: Annual Population Survey, ONS (Jul-Jun datasets)

**Chart 5.1: Unemployment, Alternative Claimant Count and Claimant Count levels, Scotland, January 2013 - August 2020**  
*seasonally adjusted*



Sources: Labour Force Survey (ONS): Dec-Feb 13 - May-Jul 20  
 Claimant Count (ONS), Jan 2013 - August 2020  
 Alternative Claimant Count (DWP): Jan 2013 - May 2020

**Table 5.1a: Claimant Count levels, August 2020 - (Experimental Data)**

	Level	Change on previous month		Change on previous year		Change on August 2013	
	(000s)	(000s)		(000s)		(000s)	
Scotland	226	5	↑	115	↑	100	↑
England	2,328	66	↑	1,353	↑	1,195	↑
Wales	122	2	↑	64	↑	50	↑
N Ireland	63	1	↑	33	↑	1	↑
UK	2,738	74	↑	1,566	↑	1,345	↑

**Table 5.1b: Claimant Count rates, August 2020 - (Experimental Data)**

	Rate	Change on previous month		Change on previous year		Change on August 2013	
	(%)	(%pts)		(%pts)		(%pts)	
Scotland	8.0	0.2	↑	4.1	↑	3.5	↑
England	7.6	0.2	↑	4.4	↑	3.6	↑
Wales	8.0	0.1	↑	4.2	↑	3.1	↑
N Ireland	6.8	0.1	↑	3.6	↑	-0.2	↓
UK	7.6	0.2	↑	4.4	↑	3.5	↑

Source: Claimant Count, ONS (seasonally adjusted)

Notes:

1. Levels rounded to nearest 1000.
2. The Claimant Count rate is calculated as a proportion of Claimant Count + Workforce jobs.
3. Claimant count rates are workplace based.

ONS re-classified the Claimant Count series as experimental following the introduction of DWP Universal Credit and concerns that this series may be misleading. See Notes (page 43) for further information.

**Table 5.2: Claimant Count by local authority (Experimental data)**  
*not seasonally adjusted*

	August 2020 Total Claimants	% Change on year		Claimant Count rate (%)	Change on year (%pts)	
Aberdeen City	9,270	142	↑	5.9	3.5	↑
Aberdeenshire	6,770	140	↑	4.2	2.5	↑
Angus	4,055	80	↑	5.9	2.6	↑
Argyll and Bute	3,195	132	↑	6.3	3.6	↑
City of Edinburgh	19,095	200	↑	5.2	3.5	↑
Clackmannanshire	2,290	66	↑	7.1	2.8	↑
Dumfries and Galloway	5,080	83	↑	5.8	2.7	↑
Dundee City	7,580	57	↑	7.6	2.8	↑
East Ayrshire	6,340	66	↑	8.3	3.3	↑
East Dunbartonshire	3,025	138	↑	4.7	2.7	↑
East Lothian	3,700	118	↑	5.6	3.0	↑
East Renfrewshire	2,450	147	↑	4.3	2.6	↑
Falkirk	6,420	94	↑	6.3	3.0	↑
Fife	16,065	78	↑	6.9	3.0	↑
Glasgow City	38,720	102	↑	8.7	4.4	↑
Highland	8,450	151	↑	5.9	3.5	↑
Inverclyde	3,300	37	↑	6.8	1.8	↑
Midlothian	3,200	132	↑	5.6	3.2	↑
Moray	3,075	106	↑	5.2	2.7	↑
Na h-Eileanan Siar	890	166	↑	5.7	3.6	↑
North Ayrshire	7,390	59	↑	9.0	3.3	↑
North Lanarkshire	16,130	90	↑	7.3	3.5	↑
Orkney Islands	425	161	↑	3.2	2.0	↑
Perth and Kinross	4,670	156	↑	5.1	3.1	↑
Renfrewshire	7,885	96	↑	6.9	3.4	↑
Scottish Borders	3,880	119	↑	5.7	3.1	↑
Shetland Islands	555	151	↑	3.9	2.4	↑
South Ayrshire	5,005	89	↑	7.6	3.6	↑
South Lanarkshire	13,915	98	↑	6.9	3.4	↑
Stirling	3,150	116	↑	5.2	2.8	↑
West Dunbartonshire	4,935	78	↑	8.7	3.8	↑
West Lothian	7,100	114	↑	6.1	3.2	↑
<b>Scotland</b>	<b>228,005</b>	<b>103</b>	<b>↑</b>	<b>6.5</b>	<b>3.3</b>	<b>↑</b>

Source: Claimant Count, ONS

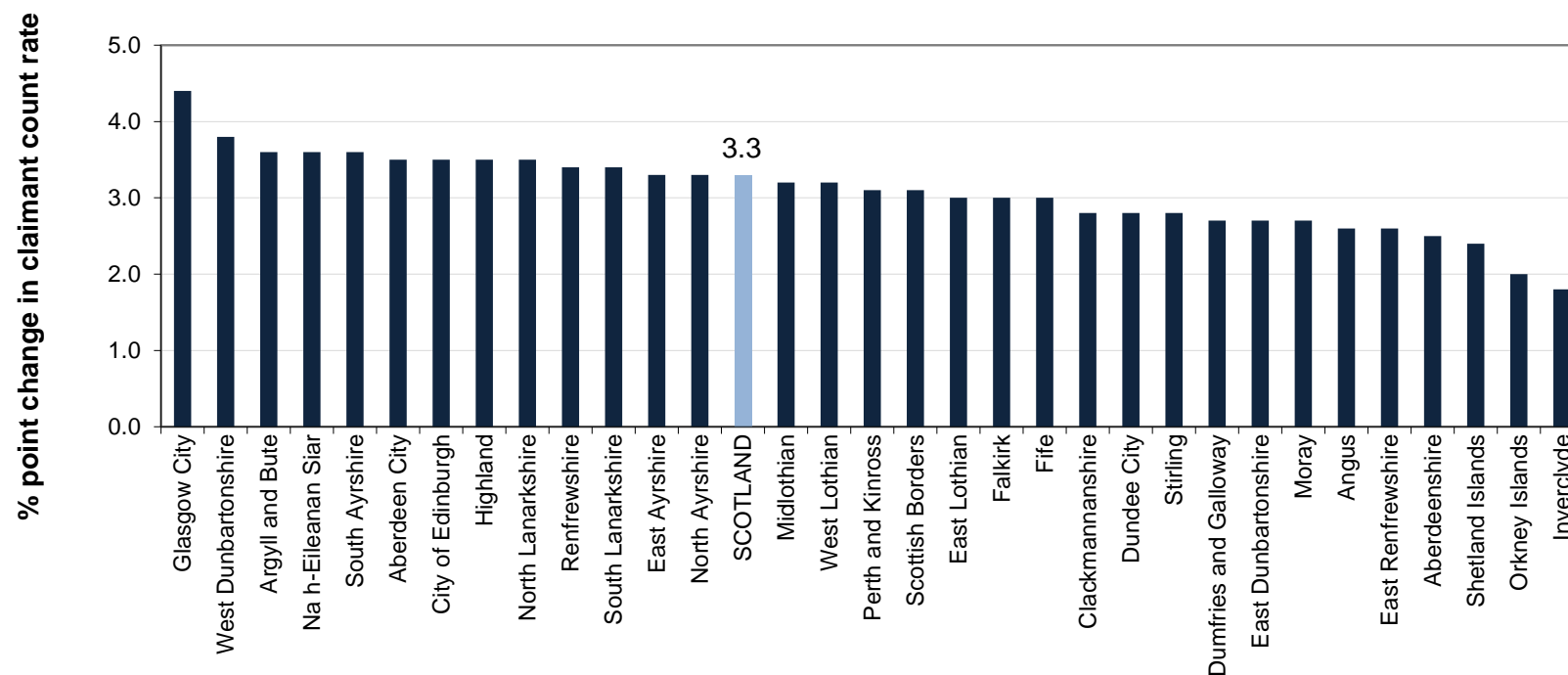
Notes:

1. Levels rounded to nearest 5.
2. The Claimant Count rate is calculated as a proportion of the resident population, aged 16-64, based on the Mid-year population estimates for 2019.

ONS re-classified the Claimant Count series as experimental following the introduction of DWP Universal Credit and concerns that this series may be misleading. See Notes (page 43) for further information.



Chart 5.2: Change in Claimant Count rate by local authority (August 2019 to August 2020)



Source: Claimant Count, ONS

Notes:

1. Claimant Count rates are based on unrounded data. Chart labels are rounded to one decimal place.
2. Claimant Count rates in each local authority and for Scotland are calculated as a proportion of the resident population, aged 16-64, based on the Mid-year population estimates for 2019.

**Table 5.3: 16-24 Claimant Count levels and rates, Scotland and UK**  
**(Experimental data)**  
*not seasonally adjusted*

	Scotland		UK	
	Level	Rate (%)	Level	Rate (%)
<b>August 2019</b>	23,205	4.0	224,315	3.2
<b>August 2020</b>	46,735	8.1	535,730	7.6
<b>Change on year (rate as %pt)</b>	23,530	4.1	311,415	4.4

Source: Claimant Count, ONS

**Table 5.4: 16-24 Claimant Count levels and rates by gender, Scotland**  
**(Experimental data)**  
*not seasonally adjusted*

	Male		Female	
	Level	Rate (%)	Level	Rate (%)
<b>August 2019</b>	14,375	4.9	8,830	3.1
<b>August 2020</b>	28,360	9.7	18,380	6.5
<b>Change on year (rate as %pt)</b>	13,980	4.8	9,550	3.4

Source: Claimant Count, ONS

Notes:

1. Levels rounded to nearest 5.
2. These Claimant Count rates for 16-24 year olds have been produced by the Scottish Government and are calculated as a proportion of the resident population, aged 16-24, based on the Mid-year population estimates for 2019.

ONS re-classified the Claimant Count series as experimental following the introduction of DWP Universal Credit and concerns that this series may be misleading. **See Notes (page 43) for further information.**

**Table 5.5: 16-24 Claimant Count levels and rates by Local Authority, July 2020 (Experimental data)**

	Level			Rate		
	August 2020	Change on year		August 2020	Change on year (%pts)	
<b>Scotland</b>	<b>46,735</b>	<b>23,530</b>	<b>↑</b>	<b>8.1</b>	<b>4.1</b>	<b>↑</b>
<i>Local Authority Area</i>						
Aberdeen City	1,785	1,025	↑	6.6	3.8	↑
Aberdeenshire	1,350	685	↑	5.9	3.0	↑
Angus	900	360	↑	8.4	3.4	↑
Argyll and Bute	635	400	↑	7.8	4.9	↑
City of Edinburgh	3,285	2,210	↑	5.1	3.4	↑
Clackmannanshire	565	205	↑	11.1	4.0	↑
Dumfries and Galloway	1,070	510	↑	8.1	3.9	↑
Dundee City	1,750	635	↑	8.4	3.0	↑
East Ayrshire	1,390	540	↑	11.8	4.6	↑
East Dunbartonshire	650	380	↑	6.3	3.7	↑
East Lothian	765	455	↑	7.9	4.7	↑
East Renfrewshire	575	360	↑	6.0	3.8	↑
Falkirk	1,345	605	↑	8.6	3.9	↑
Fife	3,560	1,550	↑	8.9	3.9	↑
Glasgow City	7,190	3,680	↑	9.0	4.6	↑
Highland	1,680	1,045	↑	7.9	4.9	↑
Inverclyde	735	185	↑	9.7	2.4	↑
Midlothian	695	375	↑	8.1	4.4	↑
Moray	650	320	↑	7.0	3.5	↑
Na h-Eileanan Siar	155	105	↑	7.4	5.0	↑
North Ayrshire	1,650	650	↑	12.3	4.8	↑
North Lanarkshire	3,500	1,725	↑	9.7	4.8	↑
Orkney Islands	90	45	↑	4.9	2.4	↑
Perth and Kinross	990	580	↑	7.2	4.3	↑
Renfrewshire	1,615	775	↑	8.9	4.3	↑
Scottish Borders	890	475	↑	8.8	4.6	↑
Shetland Islands	120	75	↑	5.8	3.6	↑
South Ayrshire	1,095	515	↑	10.6	5.0	↑
South Lanarkshire	2,800	1,385	↑	9.1	4.5	↑
Stirling	690	385	↑	5.6	3.1	↑
West Dunbartonshire	990	450	↑	11.4	5.2	↑
West Lothian	1,590	835	↑	8.7	4.6	↑

Source: Claimant Count, ONS

Notes:

1. Levels rounded to nearest 5.
2. These Claimant Count rates for 16-24 year olds have been produced by the Scottish Government and are calculated as a proportion of the resident population, aged 16-24, based on the Mid-year population estimates for 2019.

**Table 6.1a: Alternative Claimant Count levels, May 2020 - (Experimental Data)**

	Level	Change on previous month		Change on previous year		Change on May 2013	
	(000s)	(000s)		(000s)		(000s)	
Scotland	212	37	↑	103	↑	28	↑
England	2,286	576	↑	1,248	↑	490	↑
Wales	120	18	↑	60	↑	11	↑
N Ireland	66	9	↑	31	↑	-17	↓
UK	2,686	640	↑	1,443	↑	512	↑

**Table 6.1b: Alternative Claimant Count rates, May 2020 - (Experimental Data)**

	Rate	Change on previous month		Change on previous year		Change on May 2013	
	(%)	(%pts)		(%pts)		(%pts)	
Scotland	6.1	1.1	↑	2.9	↑	0.8	↑
England	6.5	1.6	↑	3.6	↑	1.3	↑
Wales	6.2	0.9	↑	3.1	↑	0.6	↑
N Ireland	5.6	0.7	↑	2.7	↑	-1.5	↓
UK	6.4	1.5	↑	3.5	↑	1.1	↑

Source: *Alternative Claimant Count, DWP, seasonally adjusted*

Notes:

1. Levels rounded to nearest 1000.
2. The Alternative Claimant Count is the total number of people claiming unemployment-related benefits. This comprises those claiming either Jobseeker's Allowance or Universal Credit (under the Searching for Work conditionality) along with estimates of additional claimants who would have been searching for work under Universal Credit had it existed over the entire period since 2013.
3. The Alternative Claimant Count rate is calculated as a proportion of the resident population, aged 16-64, based on the Mid-year population estimates for 2019.
4. The Alternative Claimant Count publication is available online at (based on 'Table 2\_region') <https://www.gov.uk/government/statistics/alternative-claimant-count-statistics-january-2013-to-may-2020>

**Table 6.2: Alternative Claimant Count by local authority (Experimental data)**

*not seasonally adjusted*

	May 2020 Total Claimants	% Change on year		Alternative Claimant Count rate (%)	Change on year (%pts)	
Aberdeen City	8,025	95.5	↑	5.1	2.5	↑
Aberdeenshire	6,146	106.4	↑	3.8	2.0	↑
Angus	3,854	73.8	↑	5.6	2.4	↑
Argyll and Bute	3,334	126.6	↑	6.6	3.7	↑
City of Edinburgh	18,561	154.3	↑	5.1	3.1	↑
Clackmannanshire	2,293	69.7	↑	7.1	2.9	↑
Dumfries and Galloway	5,229	88.8	↑	6.0	2.8	↑
Dundee City	7,247	64.5	↑	7.3	2.9	↑
East Ayrshire	6,045	64.9	↑	8.0	3.1	↑
East Dunbartonshire	2,802	130.8	↑	4.3	2.5	↑
East Lothian	3,748	130.1	↑	5.7	3.2	↑
East Renfrewshire	2,378	138.5	↑	4.2	2.4	↑
Falkirk	6,373	96.0	↑	6.2	3.1	↑
Fife	15,628	75.2	↑	6.7	2.9	↑
Glasgow City	37,169	89.5	↑	8.3	3.9	↑
Highland	8,205	144.3	↑	5.7	3.4	↑
Inverclyde	3,190	44.7	↑	6.6	2.0	↑
Midlothian	3,209	129.7	↑	5.6	3.2	↑
Moray	3,009	82.0	↑	5.1	2.3	↑
Na h-Eileanan Siar	876	140.0	↑	5.6	3.3	↑
North Ayrshire	7,139	59.0	↑	8.7	3.2	↑
North Lanarkshire	15,322	84.9	↑	7.0	3.2	↑
Orkney Islands	403	114.4	↑	3.0	1.6	↑
Perth and Kinross	4,467	143.6	↑	4.9	2.9	↑
Renfrewshire	7,652	92.9	↑	6.7	3.2	↑
Scottish Borders	3,889	107.3	↑	5.7	3.0	↑
Shetland Islands	461	115.4	↑	3.3	1.8	↑
South Ayrshire	4,716	77.0	↑	7.1	3.1	↑
South Lanarkshire	13,194	101.6	↑	6.5	3.3	↑
Stirling	3,111	110.9	↑	5.1	2.7	↑
West Dunbartonshire	4,856	79.0	↑	8.6	3.8	↑
West Lothian	6,803	96.2	↑	5.8	2.8	↑
<b>Scotland</b>	<b>211,943</b>	<b>94.5</b>	<b>↑</b>	<b>6.1</b>	<b>2.9</b>	<b>↑</b>

Source: Alternative Claimant Count, DWP

Notes:

1. The Alternative Claimant Count is the total number of people claiming unemployment-related benefits. This comprises those claiming either Jobseeker's Allowance or Universal Credit (under the Searching for Work conditionality) along with estimates of additional claimants who would have been searching for work under Universal Credit had it existed over the entire period since 2013.
2. The Alternative Claimant Count rates are calculated as a proportion of the resident population, aged 16-64, based on the Mid-year population estimates for 2019.

**Table 6.3: 16-24 Alternative Claimant Count levels and rates, Scotland and UK (Experimental data)**

	Scotland		UK	
	Level	Rate (%)	Level	Rate (%)
<b>May 2019</b>	19,902	3.5	203,144	2.9
<b>May 2020</b>	39,926	7.0	495,829	7.0
<b>Change on year (rate as %pt)</b>	20,024	3.5	292,685	4.1

Source: Alternative Claimant Count, DWP

**Table 6.4: 16-24 Alternative Claimant Count levels and rates by gender, Scotland (Experimental data)**

	Male		Female	
	Level	Rate (%)	Level	Rate (%)
<b>May 2019</b>	12,484	4.3	7,415	2.6
<b>May 2020</b>	24,873	8.5	15,051	5.3
<b>Change on year (rate as %pt)</b>	12,389	4.2	7,636	2.7

Source: Alternative Claimant Count, DWP

Notes:

1. The Alternative Claimant Count is the total number of people claiming unemployment-related benefits. This comprises those claiming either Jobseeker's Allowance or Universal Credit (under the Searching for Work conditionality) along with estimates of additional claimants who would have been searching for work under Universal Credit had it existed over the entire period since 2013.
2. The Alternative Claimant Count rate is calculated as a proportion of the resident population, aged 16-64, based on the Mid-year population estimates for 2019.

**Table 6.5: 16-24 Alternative Claimant Count levels and rates by Local Authority (Experimental data)**

	Level			Rate		
	May 2020	Change on year		May 2020	Change on year (%pts)	
<b>Scotland</b>	<b>39,926</b>	<b>20,024</b>	<b>↑</b>	<b>7.0</b>	<b>3.5</b>	<b>↑</b>
<i>Local Authority Area</i>						
Aberdeen City	1,472	809	↑	5.5	3.0	↑
Aberdeenshire	1,133	582	↑	5.0	2.6	↑
Angus	749	272	↑	7.0	2.5	↑
Argyll and Bute	546	331	↑	6.7	4.0	↑
City of Edinburgh	2,805	1,855	↑	4.3	2.9	↑
Clackmannanshire	492	175	↑	9.7	3.4	↑
Dumfries and Galloway	962	471	↑	7.3	3.6	↑
Dundee City	1,525	650	↑	7.3	3.1	↑
East Ayrshire	1,124	421	↑	9.5	3.6	↑
East Dunbartonshire	523	302	↑	5.1	2.9	↑
East Lothian	697	417	↑	7.2	4.3	↑
East Renfrewshire	443	277	↑	4.6	2.9	↑
Falkirk	1,212	561	↑	7.8	3.6	↑
Fife	2,993	1,264	↑	7.5	3.2	↑
Glasgow City	6,121	3,226	↑	7.7	4.0	↑
Highland	1,441	876	↑	6.8	4.1	↑
Inverclyde	601	156	↑	7.9	2.1	↑
Midlothian	629	344	↑	7.4	4.0	↑
Moray	602	234	↑	6.5	2.5	↑
Na h-Eileanan Siar	132	78	↑	6.3	3.7	↑
North Ayrshire	1,343	493	↑	10.0	3.7	↑
North Lanarkshire	2,970	1,434	↑	8.3	4.0	↑
Orkney Islands	68	38	↑	3.7	2.1	↑
Perth and Kinross	868	531	↑	6.3	3.9	↑
Renfrewshire	1,371	720	↑	7.6	4.0	↑
Scottish Borders	739	381	↑	7.3	3.8	↑
Shetland Islands	88	45	↑	4.2	2.2	↑
South Ayrshire	877	372	↑	8.5	3.6	↑
South Lanarkshire	2,517	1,276	↑	8.2	4.1	↑
Stirling	595	305	↑	4.8	2.5	↑
West Dunbartonshire	904	460	↑	10.4	5.3	↑
West Lothian	1,361	660	↑	7.5	3.6	↑

Source: *Alternative Claimant Count, DWP*

Notes:

1. The Alternative Claimant Count is the total number of people claiming unemployment-related benefits. This comprises those claiming either Jobseeker's Allowance or Universal Credit (under the Searching for Work conditionality) along with estimates of additional claimants who would have been searching for work under Universal Credit had it existed over the entire period since 2013.
2. The Alternative Claimant Count rates are calculated as a proportion of the resident population, aged 16-64, based on the Mid-year population estimates for 2019.

**Table 7.1: Median monthly pay, Scotland and UK, July 2015 - July 2020 (Experimental statistics)**

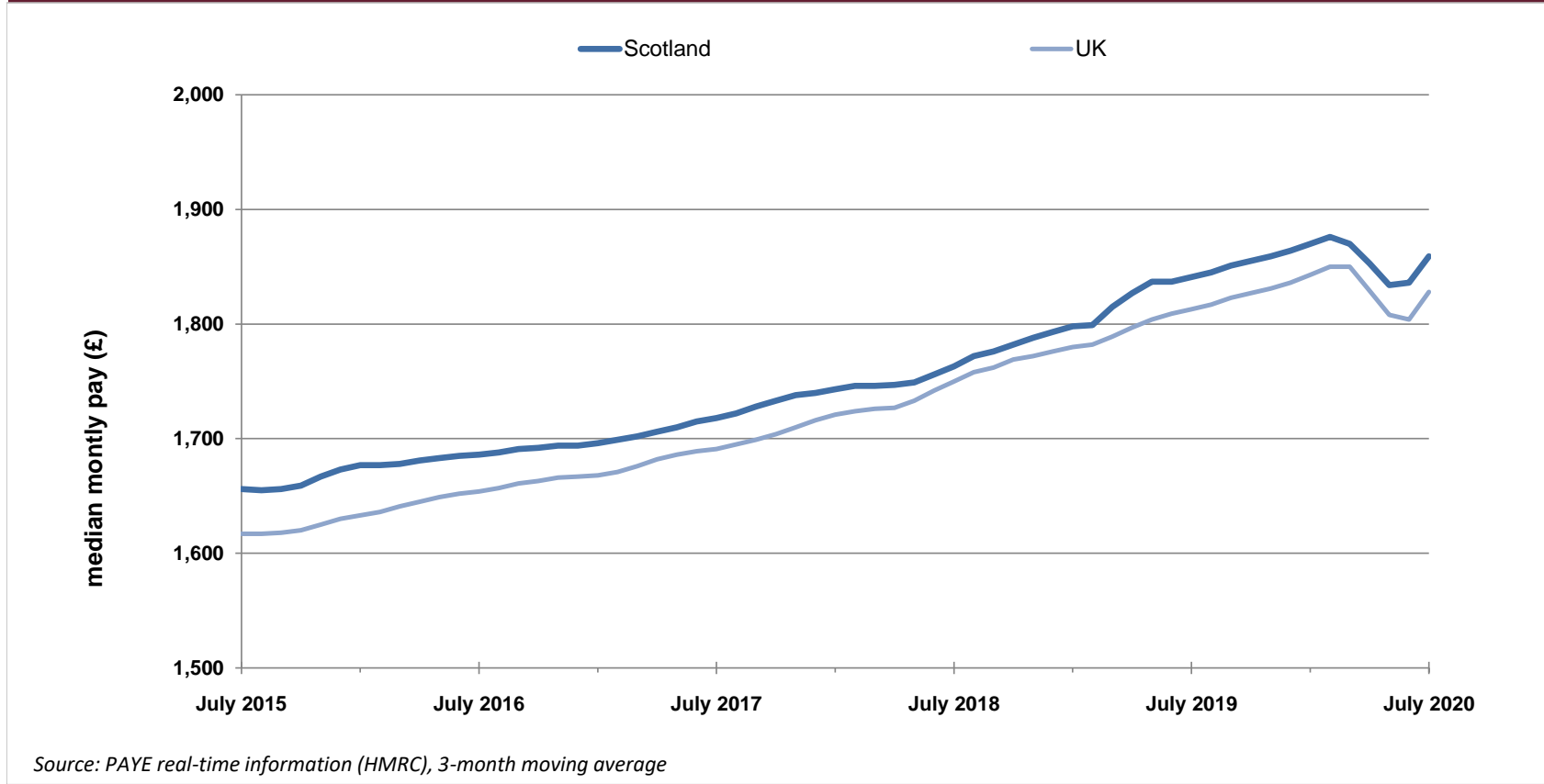
	2015	2016	2017	2018	2019	2020
<b>Median monthly pay (£ per month)</b>						
UK	1,619	1,658	1,693	1,751	1,819	1,862
<i>Median £ per month, 3 month moving average</i>						
UK	1,617	1,654	1,691	1,750	1,813	1,828
Scotland	1,656	1,686	1,718	1,763	1,841	1,859
<b>Annual Growth (%)</b>						
UK		2.4	2.1	3.4	3.9	2.4
<i>Annual Growth (%) - Median £ per month, 3 month moving average</i>						
UK		2.3	2.2	3.5	3.6	0.8
Scotland		1.8	1.9	2.6	4.4	1.0

Source: PAYE real-time information (HMRC)

**Note:** Sub-national estimates (for Scotland and other NUTS1 geographies) are published as a 3-month seasonally adjusted moving average while headline UK estimates are available for each single month (but not seasonally adjusted). For comparison purposes, both UK figures are shown - headline estimates are in grey.

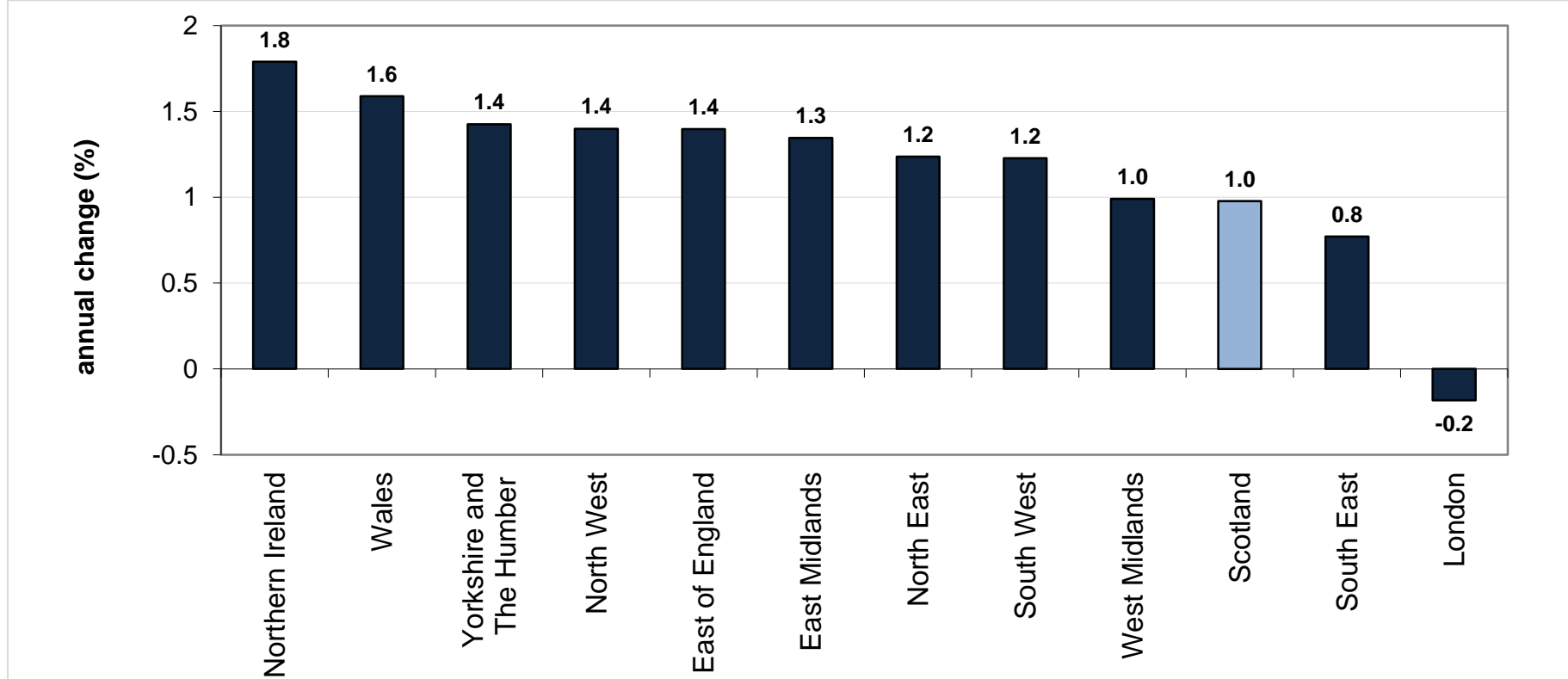


**Chart 7.1: Median monthly pay, Scotland and UK, July 2015 - July 2020 (Experimental statistics)**  
*seasonally adjusted*



**Chart 7.2: Annual change in median monthly pay, July 2019 to July 2020, by Government Office Region (Experimental statistics)**

*seasonally adjusted*



Source: PAYE real-time information (HMRC), 3-month moving average. Estimates are residence-based.

## Alternative Claimant Count

The Alternative Claimant Count measures the number of people claiming unemployment-related benefits. Previously, the Claimant Count was simply the number of people claiming Jobseeker's Allowance.

- Since the introduction of Universal Credit in April 2013, Universal Credit claimants who meet the 'Searching for Work' conditionality have been added to overall Claimant Count figures. By bringing more people within the coverage of the Claimant Count, total numbers may rise irrespective of economic performance.
- ONS has withdrawn Claimant Count data from Labour Market Statistics bulletins, stating that it was no longer a reliable economic indicator and could be a misleading representation of changes in the labour market. The Alternative Claimant Count is intended to provide a consistent claimant unemployment series and thus a better indicator of local labour market change over time.
- The new Alternative Claimant Count is not directly comparable to the Claimant Count figures previously published.

Statistics for this new measure are published quarterly by the Department for Work and Pensions (DWP). They are available by calendar month at national and local authority level and can be broken down by gender, age group and type of benefit claimed. Tables 6.1 to 6.5 show experimental Alternative Claimant Count data published by DWP and are updated quarterly. The most recent data was published on 16 July 2020. Further information on this measure can be found at the following link:

<https://www.gov.uk/government/statistics/alternative-claimant-count-statistics-january-2013-to-may-2020>

## Claimant Count

The Claimant Count measures the number of people claiming benefit principally for the reason of being unemployed:

- between January 1971 (when comparable estimates start) and September 1996, it is an estimate of the number of people who would have claimed unemployment-related benefits if Jobseeker's Allowance had existed at that time.
- between October 1996 and April 2013, the Claimant Count is a count of the number of people claiming Jobseeker's Allowance (JSA).
- between May 2013 and October 2013, the Claimant Count includes all claimants of Universal Credit (including those who were in work) as well as all JSA claimants
- from November 2013, the Claimant Count includes all out of work Universal Credit claimants as well as all JSA claimants .
- From April 2015 onwards the claimant count includes those claimants of Universal Credit who are required to search for work, i.e. within the Searching for Work conditionality regime as defined by the Department for Work & Pensions as well as all JSA claimants

Information for August 2020 is for the number of claimants as at the 13th August 2020.

## Measures of disability

In the April-June 2013 dataset, and subsequent datasets, questions used to derive current disability status of a person were changed. Estimates are now based on the core definition of disability under the Equality Act 2010, as specified in the Government Statistical Service (GSS) Harmonised Standards for Questions on disability.

- The definition includes people with a health condition or illness lasting 12 months or more that reduces their ability to carry out day-to-day activities.
- The definition excludes certain non-core groups covered by the Equality Act, such as those with progressive or past conditions that do not currently limit their activities, and conditions that only limit their activities without medication or treatment.
- Respondents are now asked to take into account any medication that they are currently taking when previously they were asked to consider their day-to-day activities without the use of medication.

The introduction of this new definition has created a discontinuity in the series and estimates are not directly comparable with earlier periods

## Further information

Further Labour Market information can be obtained from the following sites/sources.

### **Scottish Government Labour Market Statistics:**

Further commentary and charts are published in *Labour Market Trends: September 2020*

<https://www.gov.scot/publications/labour-market-trends-september-2020/>

### **Scottish Government Open Data:**

<https://statistics.gov.scot/home>

### **ONS:**

Labour Market Statistics Theme page

<http://www.ons.gov.uk/ons/taxonomy/index.html?nscl=Labour+Market>

Regional Labour Market Statistics

<https://www.ons.gov.uk/employmentandlabourmarket/peopleinwork/employmentandemployeetypes/bulletins/regionallabourmarket/previousReleases>

### **HMRC:**

Earnings and employment statistics from Pay As You Earn (PAYE) Real Time Information

<https://www.gov.uk/government/statistics/uk-real-time-information-experimental-statistics>

### **NOMIS:**

Online database for official labour market statistics

<https://www.nomisweb.co.uk/default.asp>

## Contact details

Telephone: 0131 244 6773

email: [LMStats@gov.scot](mailto:LMStats@gov.scot)