

Scottish Household Survey User day
29-03-2018

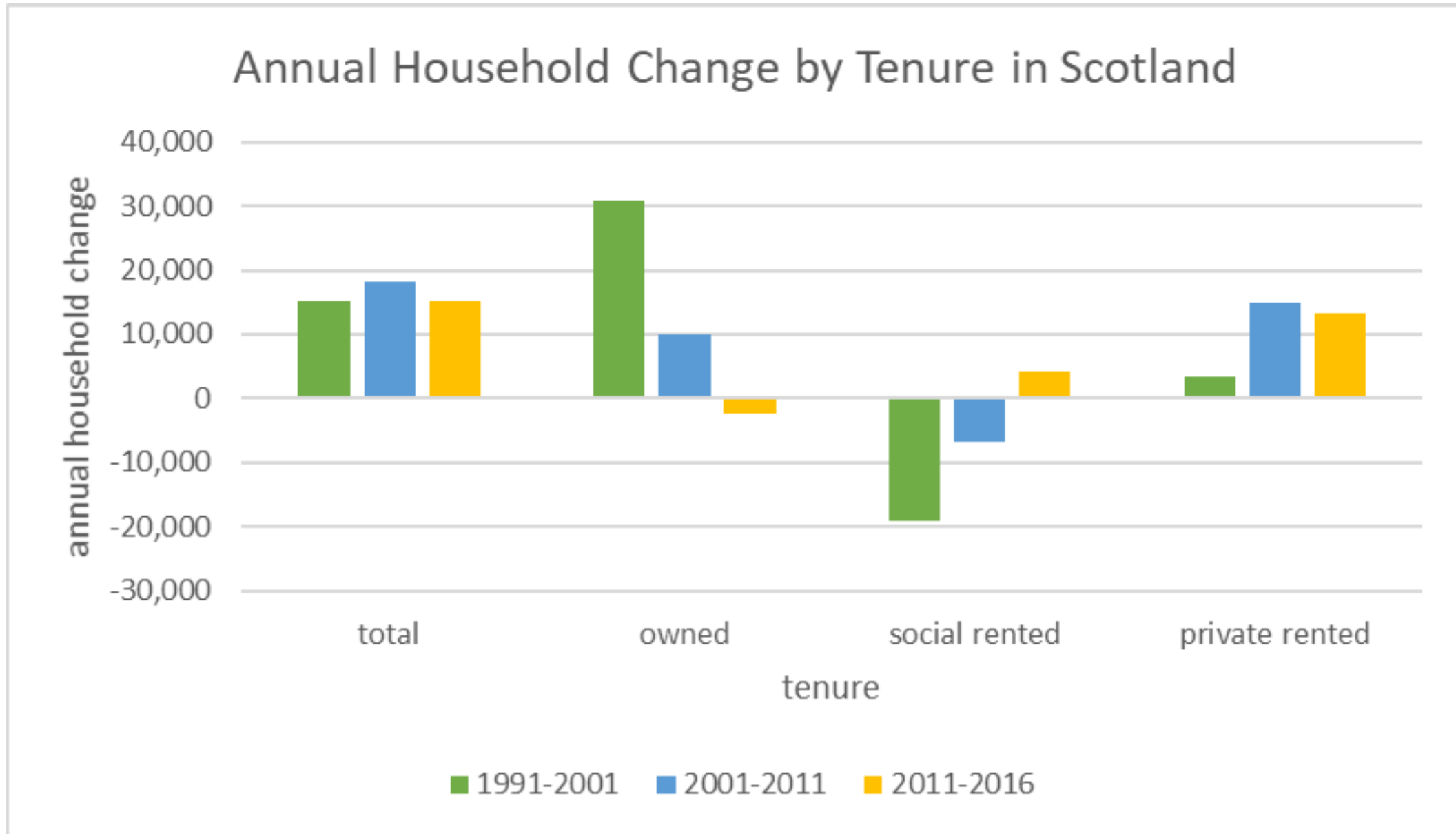
Tenure Change in Scotland since 1991

Jan Freeke – affiliate researcher - Glasgow University

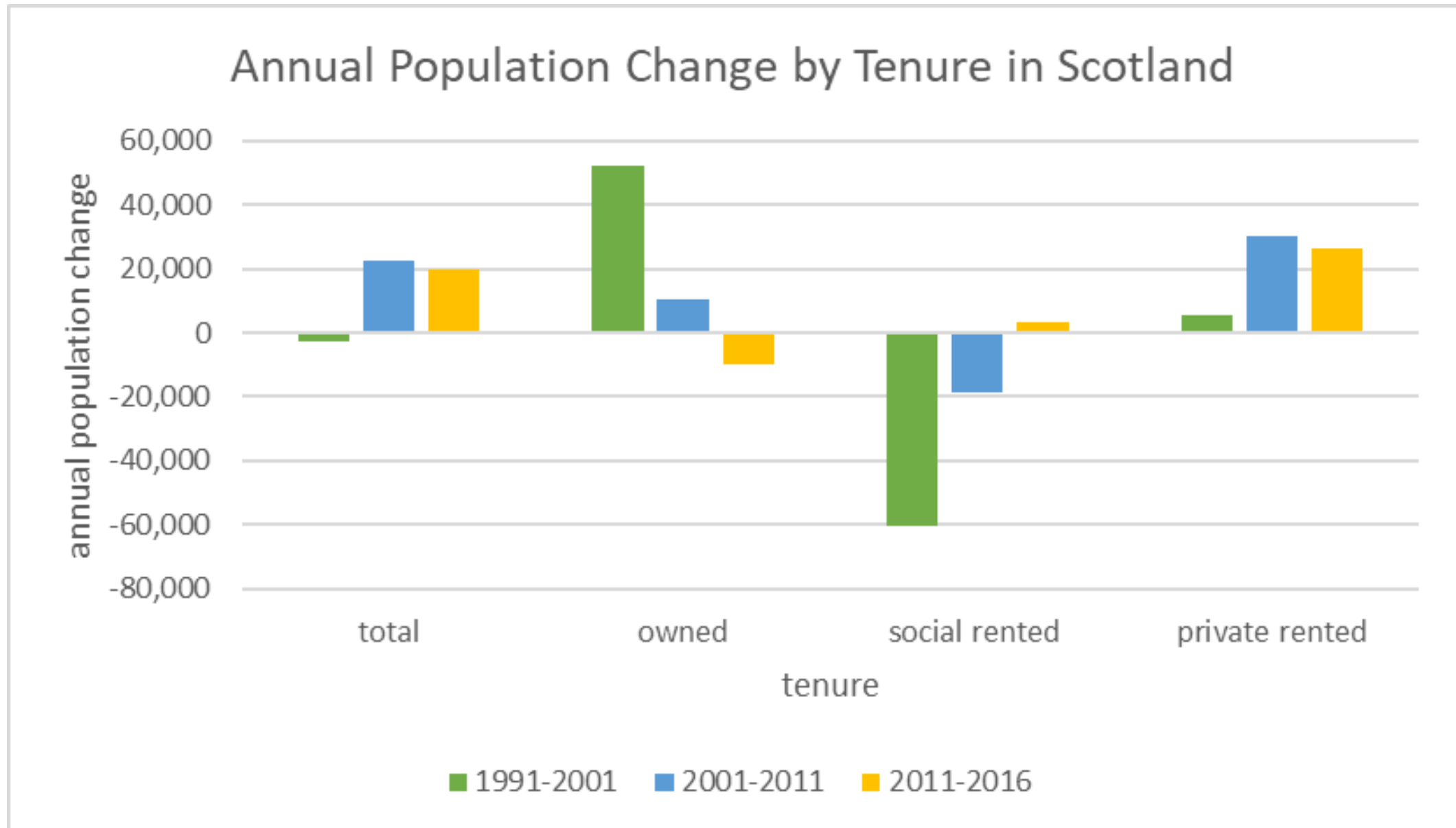
Tenure Change in Scotland since 1991

- Projection of tenure change is an important component in the assessment of demand for private sector housing land.
- Initial study: comparison of tenure change in 1991-2001 (based on Census data) and 2001-2006 (based on SHS data).
- Following 2011 Census: comparison of tenure change in 1991-2001 and 2001-2011.
- For SHS user day: comparison of tenure change in 1991-2001 and 2001-2011 (based on Census data) and 2011-2016 (based on SHS data).
- SHS data supplied required approximation of estimates. Therefore results presented for 2011-2016 are provisional.

Total Tenure change (1)

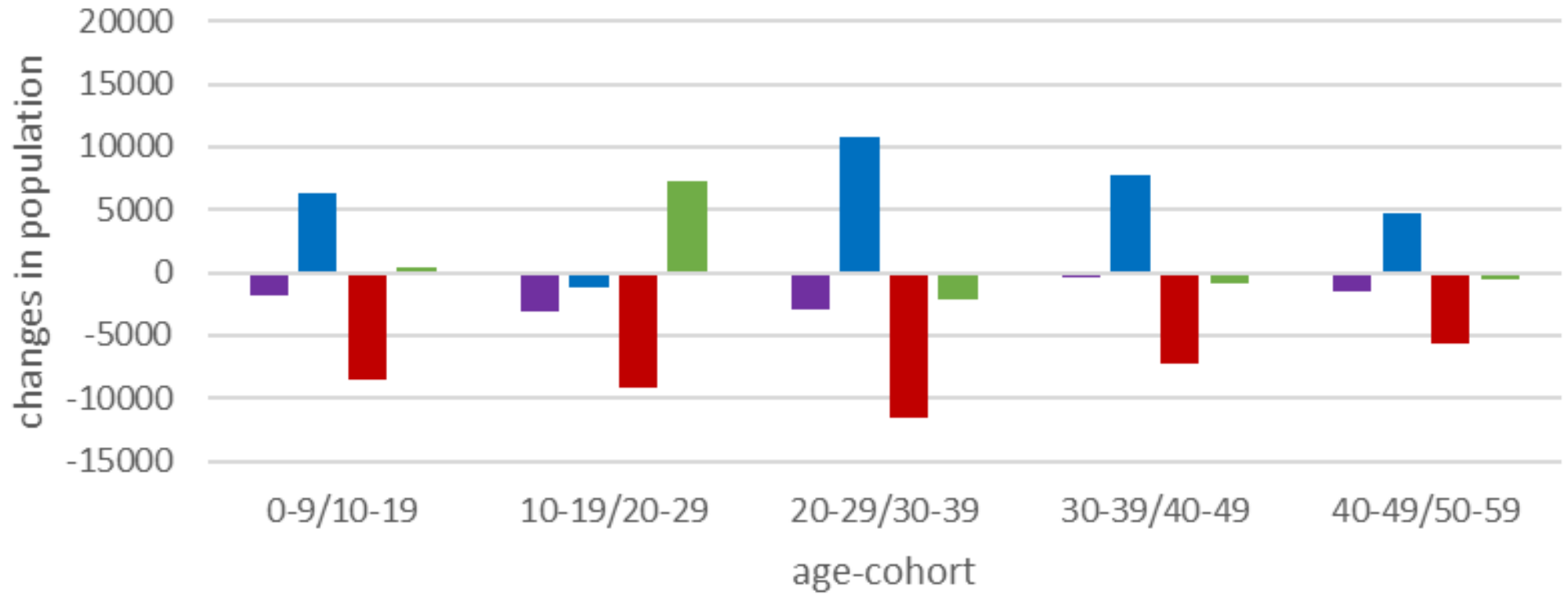


Total Tenure Change (2)



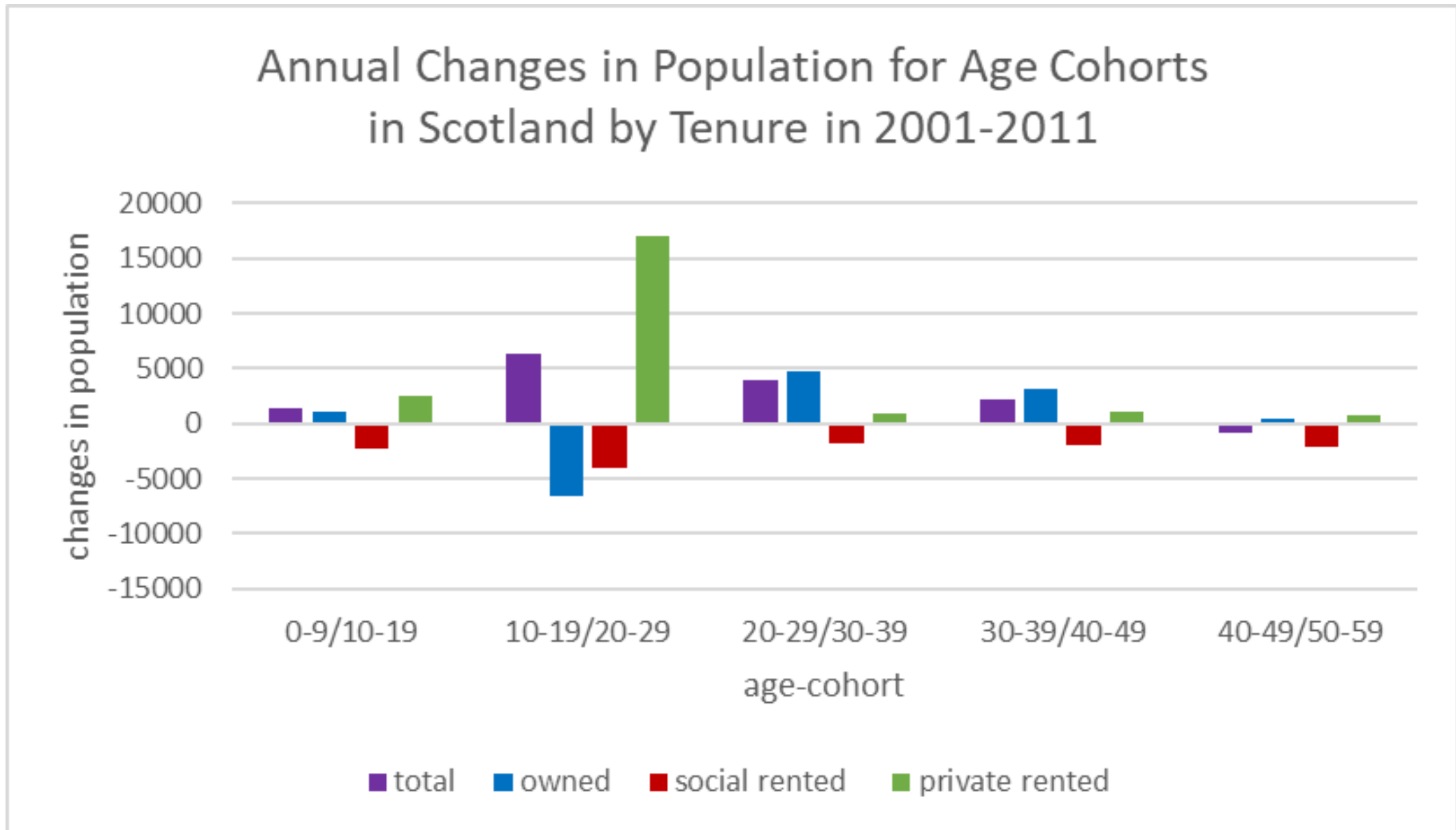
Tenure Change by Age (1)

Annual Changes in Population for Age Cohorts in Scotland by Tenure in 1991-2001

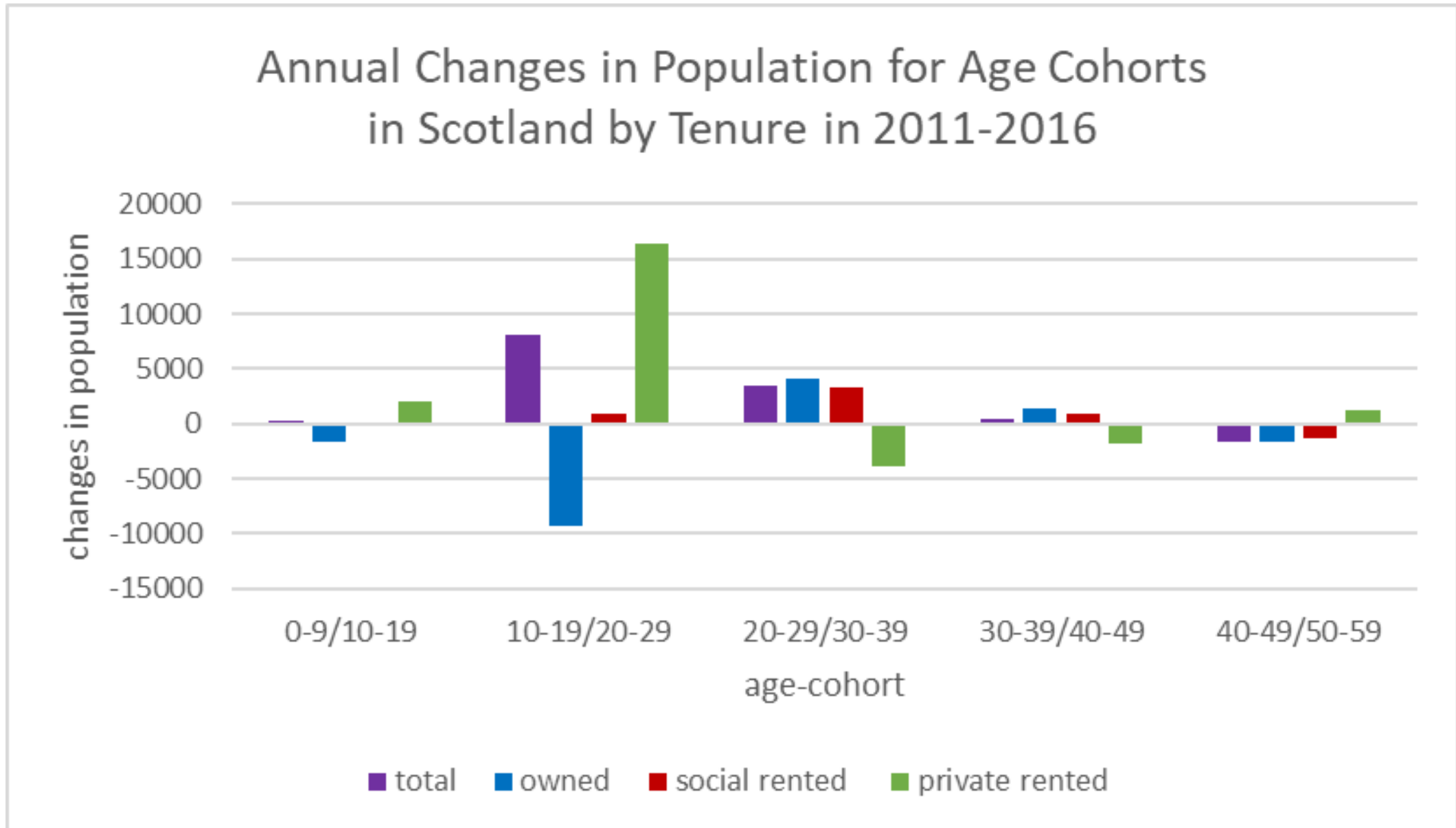


total owned social rented private rented

Tenure Change by Age (2)



Tenure Change by Age (3)



Tenure Change by Economic Status (1)

Annual Changes in Population (age 16-74) by Economic Status and Tenure in Scotland in 1991-2001



Tenure Change by Economic Status (2)

Annual Changes in Population (age 16-74) by Economic Status and Tenure in Scotland in 2001-2011



Tenure Change and Economic Status (3)

Annual Changes in Population (age 16-74) by Economic Status and Tenure in Scotland in 2011-2016



Tenure Change since 2011 – Conclusions:

- Reduction in owner occupation, but with a rising elderly population.
- Slightly reduced rate of increase for private renting (compared to 2001-2011). Age-cohorts 20-29/30-39 and 30-39/40-49 show a net shift to owner occupation and social renting.
- Rise in private renting continues to be driven by employed people and students.
- Small increase in social renting. Net inflow age-cohorts 20-29/30-39 and 30-39/40-49.
- Rising numbers of employed people in social renting.