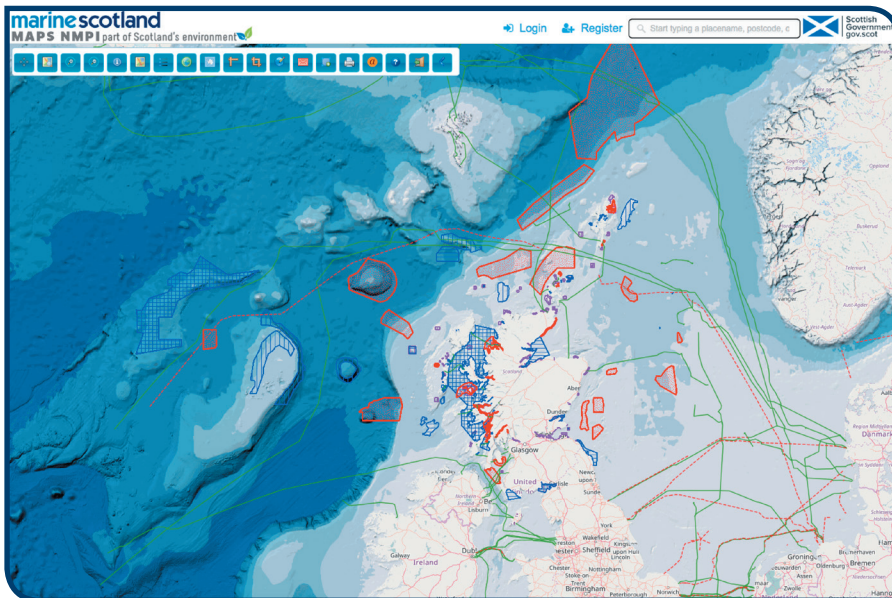
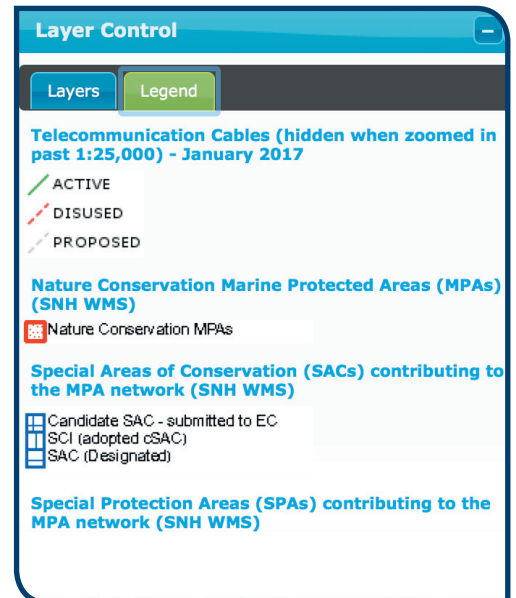


MARINE SCOTLAND MAPS NMPI

<http://maps.marine.gov.scot>



NMPI MAP SHOWING MARINE PROTECTED AREAS AND TELECOMMUNICATIONS CABLES



LAYER CONTROL SHOWING THE LEGEND FOR THE MAP

Background

The Marine (Scotland) Act 2010 and UK Marine and Coastal Access Act 2009 give Marine Scotland the rights to deliver marine planning for Scotland’s seas on behalf of Scottish Ministers. This will assist in delivering the government’s vision of “clean, healthy, safe, productive, biologically diverse marine and coastal environments managed to meet the long term needs of nature and people”.

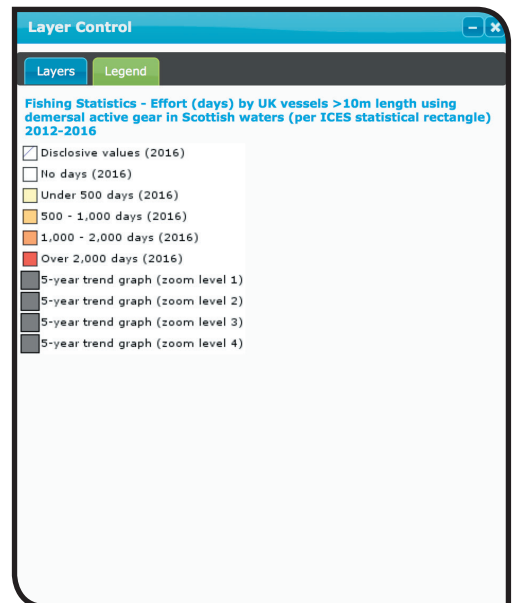
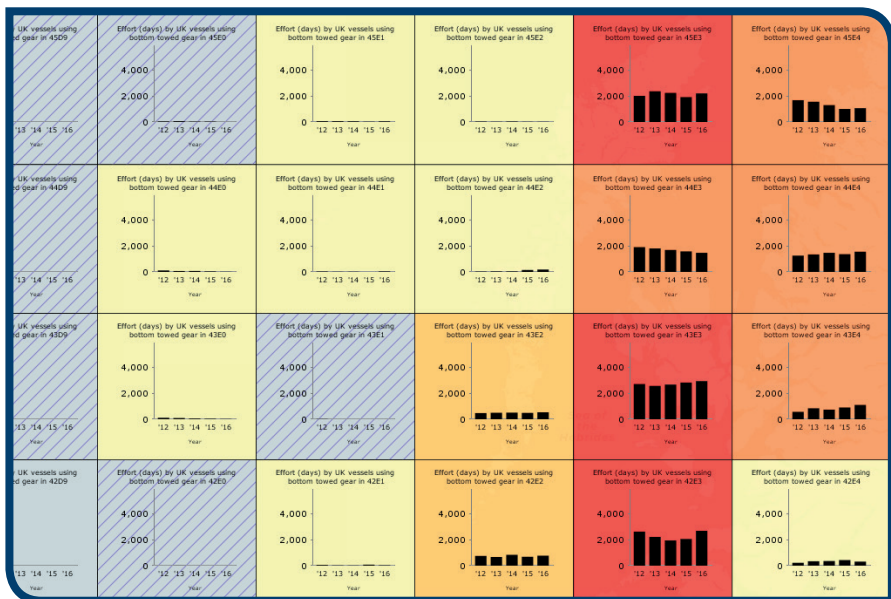
Scotland’s first national marine plan, published in 2015, is supported by a significant and robust evidence base in Scotland’s Marine Atlas, “Information for the National Marine Plan”. Marine Scotland MAPS NMPI (National Marine Plan interactive) is Marine Scotland’s key tool for sharing the data with stakeholders. It continues the innovation started by Scotland’s Marine Atlas and its follow up e-publication.

Marine Scotland MAPS NMPI

MAPS NMPI is an online, interactive GIS-based tool allowing you to view different types of information, as map layers, at a scale of your choice.

Marine Scotland Information supports MAPS NMPI with pages associated with each spatial layer, where additional information is provided. This includes data sources, links to other sources of information and, where appropriate, downloadable spread sheets to update the graphs contained in the Atlas.

Data are presented in layers and grouped into the various aspects of the Government’s vision for the seas – clean and safe seas, healthy and biologically diverse seas, productive seas. These are supported by layers on physical characteristics, climate change and administration as well as National Marine Plan map archives and a section for Regional planning data.



EFFORT BY UK VESSELS > 10M LENGTH USING DEMERSAL ACTIVE GEAR IN SCOTTISH WATERS (PER ICES STATISTICAL RECTANGLE) 2012 - 2016

All users have access to

- Data display – geographic information through a web-map interface, switchable list of layers and various tools.
- Links to associated web pages with additional information.
- NMPi's "web map services" using readily available software (e.g. a desktop GIS package) – a requirement of the INSPIRE directive.
- A dedicated version for browsers on mobile devices (Smart Phones and iPADS).
- Creating maps for printing.
- Developing their own data layers (which can then be submitted to Marine Scotland).
- Downloading certain data (subject to a licence agreement).

Registered users (registration is free) can access additional functionality to develop their own data layers (which can then be submitted to Marine Scotland).

New content is being added to NMPi on an on-going basis, while existing content is also being updated.

Collaborative working

Marine Scotland is working closely with its Atlas partners :

Scottish Natural Heritage (SNH)

www.nature.scot

Joint Nature Conservation Committee, (JNCC)

<http://jncc.defra.gov.uk>

Scottish Environment Protection Agency (SEPA)

www.sepa.org.uk

and the **Marine Alliance for Science and**

Technology Scotland (MASTS)

www.masts.ac.uk

in keeping data sets updated on NMPi.

Conclusion

NMPi is an innovative tool to assist Marine Scotland in its delivery of marine planning. It will support policy making as use of the seas changes, whether for sustainable economic growth through a variety of human activities or conservation through the designation of marine protected areas.

