

BROWN / EDIBLE CRAB

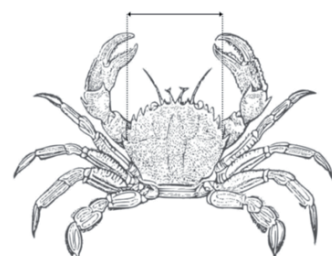
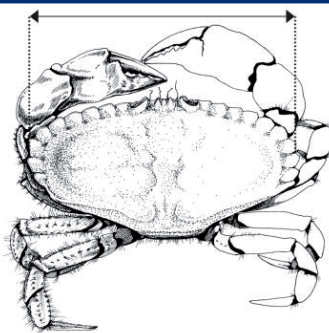
(*Cancer pagurus*)

Minimum landing sizes

140 mm – Shetland Islands

150 mm – Rest of Scotland

To measure – width of the carapace, perpendicular to the antero-posterior midline of the carapace.



VELVET CRAB (*Necora puber*)

Minimum landing size – 70 mm

To measure – width of the carapace, across the broadest part of the back (excluding spines).

LOBSTER

(*Homarus gammarus*)

Minimum landing sizes

90 mm – Shetland Islands, Orkney Islands, Outer Hebrides, West Coast from Cape Wrath to 55°N

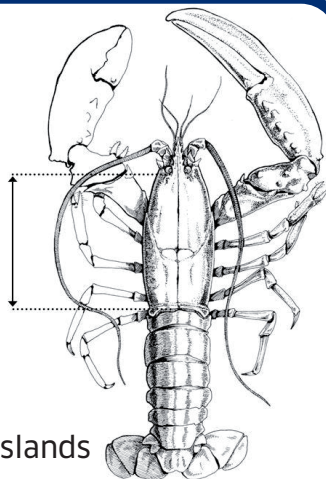
87 mm – Rest of Scotland

Maximum landing sizes for females

155 mm – Shetland Islands, Orkney Islands

145 mm – Rest of Scotland

To measure – length of the carapace, parallel to the midline, from the back of either eye socket to the distal edge of the carapace.



OTHER SPECIES

CRAWFISH (*Palinurus spp.*)

Minimum landing size – 95 mm

To measure – length of the carapace, from the tip of the rostrum to the midpoint of the distal edge of the carapace.

GREEN CRAB (*Carcinus maenas*)

Minimum landing size – 70 mm (Orkney Islands)

To measure – width of the carapace, perpendicular to the antero-posterior midline of the carapace (including spines).

SPIDER CRAB (*Maja squinado*)

Minimum landing sizes

130 mm – Male spider crab

120 mm – Female spider crab

To measure – length of the carapace, along the midline, from the edge of the carapace between the rostrums to the posterior edge of the carapace.



Scottish Government
Riaghaltas na h-Alba
gov.scot

marinescotland

LANDING CONTROLS FOR CRAB & LOBSTER FISHERIES IN SCOTLAND

With effect from
25 February 2019

OTHER CONTROLS BERRIED VELVET CRAB

It is prohibited to land a berried (egg bearing) velvet crab.

V NOTCHED LOBSTER / CRAWFISH

It is prohibited to fish for or land a lobster or crawfish that bears a v notch, or that has been mutilated to obscure a v notch.

'CRIPPLED' FEMALE LOBSTER

It is prohibited to land a 'crippled' female lobster (missing one or both claws) caught in the inshore waters of the Outer Hebrides.

FURTHER INFORMATION

More information can be found on the Marine Scotland website:

www.gov.scot/Topics/marine/Sea-Fisheries/InshoreFisheries/crab-lobster-landing-controls

If you have any questions about these controls, please contact your local Fishery Office:

www.gov.scot/Topics/marine/Compliance/fishoffices