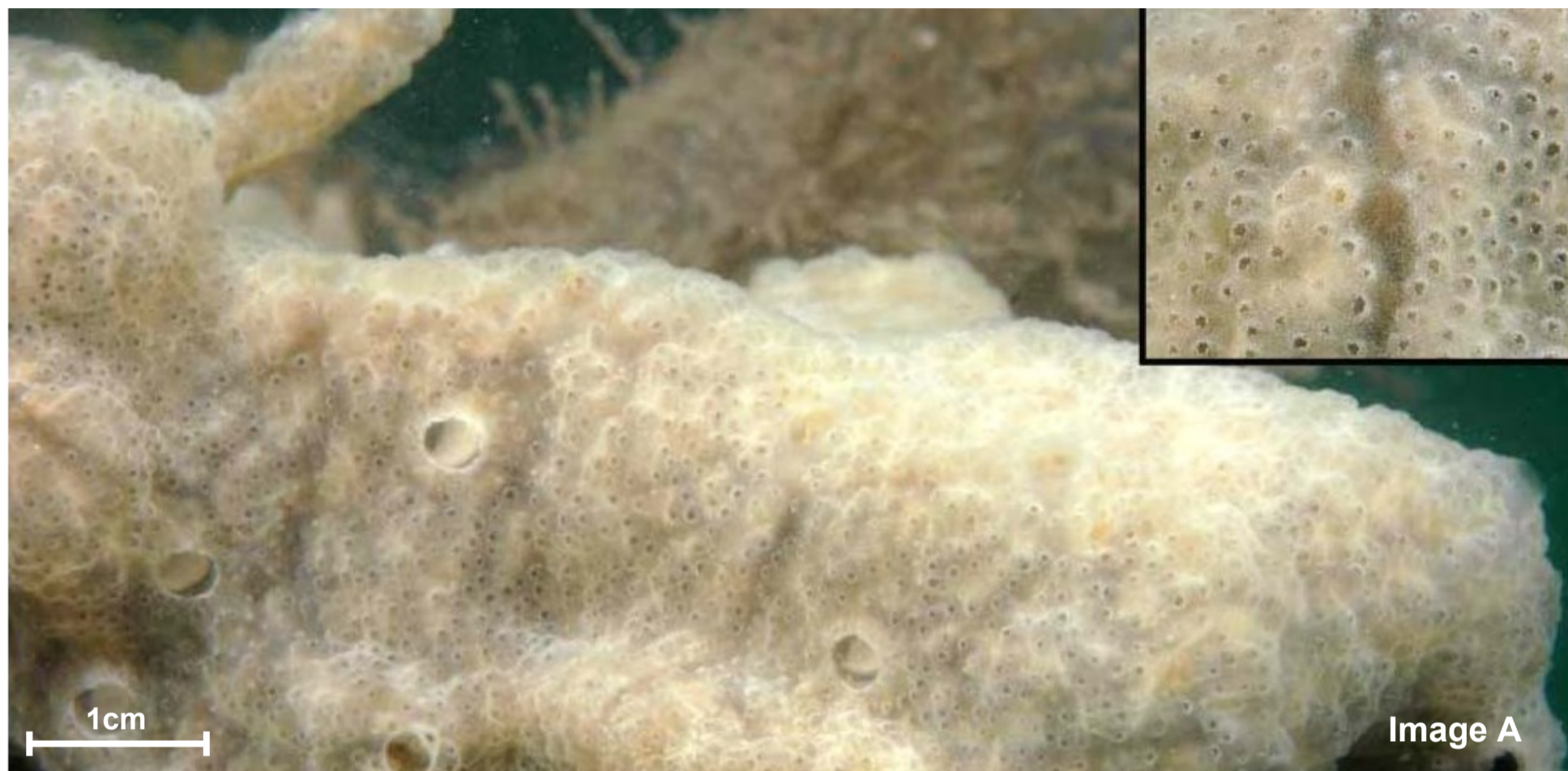


CARPET SEA SQUIRT

Didemnum vexillum

What is it?

An invasive non-native marine animal thought to be originally from Japan, it has become a pest in other countries by smothering native species and interfering with fishing, aquaculture and other activities.



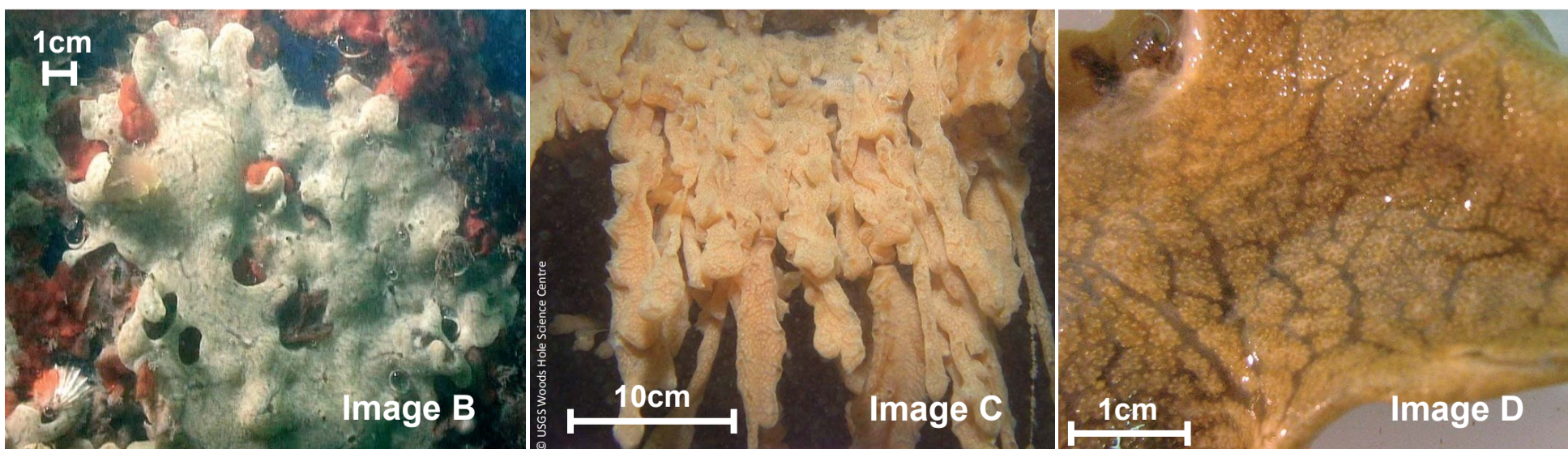
Where might I see it?

It lives in shallow water, often in harbours and marinas (inset Image A), usually growing on hard surfaces (e.g. the underside of jetties). Recently found in North Wales, south coast of England, Ireland and the Firth of Clyde in Scotland.

What does it look like?

Looks similar to some native species, but the following characteristics can help with identification:

- It can grow as thin flexible sheets (Image B), or hang down in long rope-like growths (Image C).
- It has a uniform pale orange, cream or off-white colour.
- The surface has a firm leathery texture (not slimy) and has a veined or marbled appearance (Images A and D).
- Numerous small pores open on the surface, but close up out of water to produce pale spots (Images A and D).



For more information or to report any sightings please call:

08452 302050