

How to Respond

Responding to this consultation

You are invited to respond to this consultation by 13 November 2013 using the form in Appendices D & E.

Please send your response with the completed Respondent Information Form (see 'Handling your Response' below) to:

Responses can be sent by email, by post or by online electronic response form:

Email: [Marine Environment Mailbox@scotland.gsi.gov.uk](mailto:Marine_Environment_Mailbox@scotland.gsi.gov.uk)

Post: MPA Network Consultation
Scottish Government
Marine Planning and Policy Division
Area 1-A South
Victoria Quay
Edinburgh
EH66QQ

On line: www.scotland.gov.uk/consultations

If you have any enquiries please send them to [Marine Environment Mailbox@scotland.gsi.gov.uk](mailto:Marine_Environment_Mailbox@scotland.gsi.gov.uk) or call Sebastian Howell on 0131 244 5301, Michael McLeod on 0131 244 5562 or Paul Cook on 0131 244 0381.

We would be grateful if you would use the consultation questionnaire provided in your response as this will aid our analysis of the responses received. This consultation, and all other Scottish Government consultation exercises, can be viewed online on the consultation web pages of the Scottish Government website at <http://www.scotland.gov.uk/consultations>.

The Scottish Government has an email alert system for consultations, <http://register.scotland.gov.uk>. This system allows stakeholder individuals and organisations to register and receive a weekly email containing details of all new consultations (including web links). It complements, but in no way replaces SG distribution lists, and is designed to allow stakeholders to keep up to date with all SG consultation activity, and therefore be alerted at the earliest opportunity to those of most interest. We would encourage you to register.

Handling your response

We need to know how you wish your response to be handled and, in particular, whether you are happy for your response to be made public. Please complete and return the **Respondent Information Form** which forms part of the consultation questionnaire as this will ensure that we treat your response appropriately. If you ask

for your response not to be published we will regard it as confidential, and we will treat it accordingly.

All respondents should be aware that the Scottish Government are subject to the provisions of the Freedom of Information (Scotland) Act 2002 and would therefore have to consider any request made to it under the Act for information relating to responses made to this consultation exercise.

Next steps in the process

Where respondents have given permission for their response to be made public and after we have checked that they contain no potentially defamatory material, responses will be made available to the public in the Scottish Government Library and on the SEConsult web pages. You can make arrangements to view responses by contacting the SG Library on 0131 244 4552. Responses can be copied and sent to you, but a charge may be made for this service.

What happens next?

Following the closing date, all responses will be analysed and considered to help us make a decision on the shape of the MPA network. We aim to issue a report on this consultation process in early 2014.

Comments and complaints

If you have any comments about how this consultation exercise has been conducted, please send them to Sebastian Howell. (0131 244 5301 or Sebastian.howell@scotland.gsi.gov.uk).

The Scottish Government Consultation Process

Consultation is an essential and important aspect of Scottish Government working methods. Given the wide-ranging areas of work of the Scottish Government, there are many varied types of consultation. However, in general, Scottish Government consultation exercises aim to provide opportunities for all those who wish to express their opinions on a proposed area of work to do so in ways which will inform and enhance that work.

The Scottish Government encourages consultation that is thorough, effective and appropriate to the issue under consideration and the nature of the target audience. Consultation exercises take account of a wide range of factors, and no two exercises are likely to be the same.

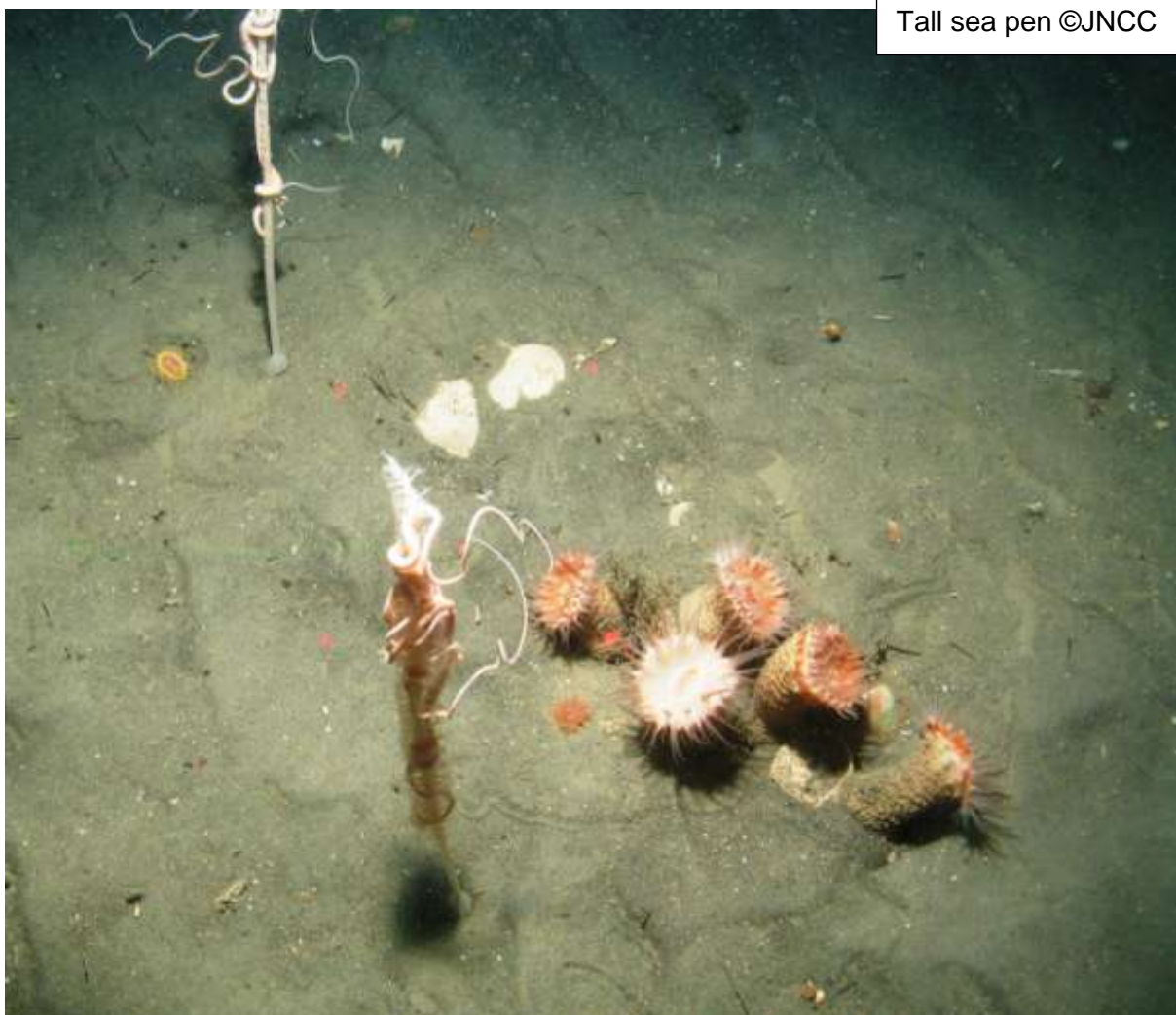
Typically Scottish Government consultations involve a written paper inviting answers to specific questions or more general views about the material presented. Written papers are distributed to organisations and individuals with an interest in the issue, and they are also placed on the Scottish Government web site enabling a wider audience to access the paper and submit their responses.

Consultation exercises may also involve seeking views in a number of different ways, such as through public meetings, focus groups or questionnaire exercises.

Copies of all the written responses received to a consultation exercise (except those where the individual or organisation requested confidentiality) are placed in the Scottish Government library at Saughton House, Edinburgh (K Spur, Saughton House, Broomhouse Drive, Edinburgh, EH113XD, telephone 0131 244 4565).

All Scottish Government consultation papers and related publications (e.g. analysis of response reports) can be accessed at: Scottish Government consultations (<http://www.scotland.gov.uk/consultations>) The views and suggestions detailed in consultation responses are analysed and used as part of the decision making process, along with a range of other available information and evidence. Depending on the nature of the consultation exercise the responses received may: indicate the need for policy development or review; inform the development of a particular policy; help decisions to be made between alternative policy proposals; be used to finalise legislation before it is implemented. Final decisions on the issues under consideration will also take account of a range of other factors, including other available information and research evidence.

While details of particular circumstances described in a response to a consultation exercise may usefully inform the policy process, consultation exercises cannot address individual concerns and comments, which should be directed to the relevant public body.



CONSULTATION QUESTIONS

1. Do you support the development of an MPA network in Scotland's Seas?

Yes No

Comments TSSC recognises that the development of an MPA network allows appropriate, sustainable development in line with Scottish Government proposals, whilst safeguarding priority marine species and habitats. TSSC recognises that the marine environment is under pressure from many varied activities and a formal structure through which to safeguard it is vital to enable sustainable use of the resource.

Individual possible Nature Conservation MPAs

2. Do you have any comments on the case for designation, management options and socioeconomic assessment for the *Clyde Sea Sill* possible Nature Conservation MPA?

Designation: Yes No

Comments

Management Options: Yes No

Comments

Socioeconomic Assessment: Yes No

Comments

All of the above: Yes No

Comments

3. Do you have any comments on the case for designation, management options and socioeconomic assessment for the *East Caithness Cliffs* possible Nature Conservation MPA?

Designation: Yes No

Comments

Management Options: Yes No

Comments

Socioeconomic Assessment: Yes No

Comments

All of the above: Yes No

Comments

4. Do you have any comments on the case for designation, management options and socioeconomic assessment for the *East of Gannet and Montrose Fields* possible Nature Conservation MPA?

Designation: Yes No

Comments

Management Options: Yes No

Comments

Socioeconomic Assessment: Yes No

Comments

All of the above: Yes No

Comments

5. Do you have any comments on the case for designation, management options and socioeconomic assessment for the *Faroe-Shetland sponge belt* possible Nature Conservation MPA?

Designation: Yes No

Comments

Management Options: Yes No

Comments

Socioeconomic Assessment: Yes No

Comments

All of the above: Yes No

Comments

6. Do you have any comments on the case for designation, management options and socioeconomic assessment for the *Fetlar to Haroldswick* possible Nature Conservation MPA?

Designation: Yes No

Comments

Management Options: Yes No

Comments

Socioeconomic Assessment: Yes No

Comments

All of the above: Yes No

Comments

7. Do you have any comments on the case for designation, management options and socioeconomic assessment for the *Hatton-Rockall Basin* possible Nature Conservation MPA?

Designation: Yes No

Comments

Management Options: Yes No

Comments

Socioeconomic Assessment: Yes No

Comments

All of the above: Yes No

Comments

8. Do you have any comments on the case for designation, management options and socioeconomic assessment for the *Loch Creran* possible Nature Conservation MPA?

Designation: Yes No

Comments

Management Options: Yes No

Comments

Socioeconomic Assessment: Yes No

Comments

All of the above: Yes No

Comments

9. Do you have any comments on the case for designation, management options and socioeconomic assessment for the *Loch Sunart* possible Nature Conservation MPA?

Designation: Yes No

Comments

Management Options: Yes No

Comments

Socioeconomic Assessment: Yes No

Comments

All of the above: Yes No

Comments

10. Do you have any comments on the case for designation, management options and socioeconomic assessment for the *Loch Sunart to the Sound of Jura* possible Nature Conservation MPA?

Designation: Yes No

Comments

Management Options: Yes No

Comments

Socioeconomic Assessment: Yes No

Comments

All of the above: Yes No

Comments

11. Do you have any comments on the case for designation, management options and socioeconomic assessment for the *Loch Sween* possible Nature Conservation MPA?

Designation: Yes No

Comments

Management Options: Yes No

Comments

Socioeconomic Assessment: Yes No

Comments

All of the above: Yes No

Comments

12. Do you have any comments on the case for designation, management options and socioeconomic assessment for the *Lochs Duich, Long and Aish* possible Nature Conservation MPA?

Designation: Yes No

Comments

Management Options: Yes No

Comments

Socioeconomic Assessment: Yes No

Comments

All of the above: Yes No

Comments

13. Do you have any comments on the case for designation, management options and socioeconomic assessment for the *Monach Isles* possible Nature Conservation MPA?

Designation: Yes No

Comments

Management Options: Yes No

Comments

Socioeconomic Assessment: Yes No

Comments

All of the above: Yes No

Comments

14. Do you have any comments on the case for designation, management options and socioeconomic assessment for the *Mousa to Boddam* possible Nature Conservation MPA?

Designation: Yes No

Comments

Management Options: Yes No

Comments

Socioeconomic Assessment: Yes No

Comments

All of the above: Yes No

Comments

15. Do you have any comments on the case for designation, management options and socioeconomic assessment for the *North-east Faroe Shetland Channel* possible Nature Conservation MPA?

Designation: Yes No

Comments

Management Options: Yes No

Comments

Socioeconomic Assessment: Yes No

Comments

All of the above: Yes No

Comments

16. Do you have any comments on the case for designation, management options and socioeconomic assessment for the *North-west Orkney* possible Nature Conservation MPA?

Designation: Yes No

Comments

Management Options: Yes No

Comments

Socioeconomic Assessment: Yes No

Comments

All of the above: Yes No

Comments

17. Do you have any comments on the case for designation, management options and socioeconomic assessment for the *North-west sea lochs and Summer Isles* possible Nature Conservation MPA?

Designation: Yes No

Comments

Management Options: Yes No

Comments

Socioeconomic Assessment: Yes No

Comments

All of the above: Yes No

Comments

18. Do you have any comments on the case for designation, management options and socioeconomic assessment for the *Noss Head* possible Nature Conservation MPA?

Designation: Yes No

Comments

Management Options: Yes No

Comments

Socioeconomic Assessment: Yes No

Comments

All of the above: Yes No

Comments

19. Do you have any comments on the case for designation, management options and socioeconomic assessment for the *Papa Westray* possible Nature Conservation MPA?

Designation: Yes No

Comments

Management Options: Yes No

Comments

Socioeconomic Assessment: Yes No

Comments

All of the above: Yes No

Comments

20. Do you have any comments on the case for designation, management options and socioeconomic assessment for the *Rosemary Bank Seamount* possible Nature Conservation MPA?

Designation: Yes No

Comments

Management Options: Yes No

Comments

Socioeconomic Assessment: Yes No

Comments

All of the above: Yes No

Comments

21. Do you have any comments on the case for designation, management options and socioeconomic assessment for the *Small Isles* possible Nature Conservation MPA?

Designation: Yes No

Comments

Management Options: Yes No

Comments

Socioeconomic Assessment: Yes No

Comments

All of the above: Yes No

Comments

22. Do you have any comments on the case for designation, management options and socioeconomic assessment for the *South Arran* possible Nature Conservation MPA?

Designation: Yes No

Comments TSSC broadly supports the designation of the South Arran MPA. It is noted in the selection guidelines (2b) that the infaunal diversity level within the feature 'burrowed mud' varies considerably - clarification should be provided as to why this location is considered a good example of burrowed mud within the network?

Management Options: Yes No

Comments TSSC notes that the features the MPA is aiming to protect are located in separate areas within the MPA, therefore we would not expect the management options to deal with the majority of pressures on an 'area-wide' basis, rather that they would deal with pressures on a local scale/individual basis.

Ocean quahogs and herring spawning grounds are not MPA search features but have been recommended as proposed protected features as it is felt that they would add to the broader representativity of the Scottish

MPA network (i.e. representative feature). What are the implications for management of such features? Will management measures/ approaches to management differ to those employed for PMFs within the MPA network?

It is noted that '*conservation objectives reflect the limitations in the understanding of the status of these features*' – TSSC hopes that this will encourage management to be adaptable/flexible when considering small scale/ local developments e.g. if there are concerns about the potential impacts of a proposed development on a feature that is predicted to be in the location and further surveying is requested – if this surveying were to show the feature is not present where predicted, it is hoped that this would allay these concerns and allow the development proposal to be viewed more favourably, if appropriate.

TSSC agrees that no additional management is required for the Lamlash fish farm. The phrase '*the location of future developments would need careful consideration*' needs clarifying as, perceived impacts from a site modification at the existing Lamlash site (i.e. additional cages) may result in different pressures/ level of impact compared to those of an entirely new development within the boundaries of the MPA, not least because of the distance from the existing Lamlash fish farm to the nearest known PMF.

Socioeconomic Assessment: Yes No

Comments

It is noted that costs associated with planning applications have been assessed at national level, however they should also be considered at a local level to make the assessment more robust.

All of the above: Yes No

Comments

23. Do you have any comments on the case for designation, management options and socioeconomic assessment for *The Barra Fan and Hebrides Terrace Seamount* possible Nature Conservation MPA?

Designation: Yes No

Comments

Management Options: Yes No

Comments

Socioeconomic Assessment: Yes No

Comments

All of the above:

Yes No

Comments

24. Do you have any comments on the case for designation, management options and socioeconomic assessment for the *Turbot Bank* possible Nature Conservation MPA?

Designation:

Yes No

Comments

Management Options:

Yes No

Comments

Socioeconomic Assessment:

Yes No

Comments

All of the above:

Yes No

Comments

25. Do you have any comments on the case for designation, management options and socioeconomic assessment for the *Upper Loch Fyne and Loch Goil* possible Nature Conservation MPA?

Designation:

Yes No

Comments TSSC understands that 'sublittoral mud and mixed sediment communities' and ocean quahogs are representative features, rather than PMFs, and questions whether this will have implications for management approaches. Clarification is required on which pressures the 'sublittoral mud and mixed sediment communities' are sensitive to, as this feature is not considered in the FEAST matrix.

Management Options:

Yes No

Comments TSSC supports the recognition that management will need to be able to evolve and adapt once the areas are implemented.

'Reduce or limit pressures associated with expansion of existing finfish farms or proposed new developments in areas where there would likely be impacts on burrowed mud and sublittoral mud and mixed communities'. Clarification is needed on what is meant by expansion e.g. spatially such as additional cages, or in terms of biomass (which may be achieved by deepening nets on existing cages). Is this approach based on actual known locations of features or habitat modelling? And if the latter, management must be able to adapt should further surveys show that predicted features are not present.

The Management Options paper refers to individual fish farm lease areas (p9), however on the same page it describes how the focus has been on the AZE and mooring grid in terms of assessing likely impacts. It should be clarified which area is being used.

p11 Reduce or avoid pressures - TSSC supports the suggestion that management for e.g. horse mussel beds could be focussed around certain locations and does not need to be put in place across the whole MPA.

p11 – Reduce or limit pressures – TSSC supports the suggestion that management should be focused around sensitive epibenthic features and that there may be potential to zone management within the possible MPA.

Socioeconomic Assessment:

Yes No

Comments There are inconsistencies between the BRIA and the Management Options paper in terms of what the conservation objectives of individual features are and these must be clarified.

Costs associated with gaining new planning consents should be considered as part of this assessment.

All of the above:

Yes No

Comments

26. Do you have any comments on the case for designation, management options and socioeconomic assessment for the *West Shetland Shelf (formerly Windssock)* possible Nature Conservation MPA?

Designation:

Yes No

Comments

Management Options:

Yes No

Comments

Socioeconomic Assessment:

Yes No

Comments

All of the above:

Yes No

Comments

27. Do you have any comments on the case for designation, management options and socioeconomic assessment for the *Wyre and Rousay Sounds* possible Nature Conservation MPA?

Designation:

Yes No

Comments

Management Options:

Yes No

Comments

Socioeconomic Assessment:

Yes No

Comments

All of the above:

Yes No

Comments

Choices to represent features in the MPA Network

28. Recognising the scientific advice from JNCC included alternatives for representing offshore subtidal sands and gravels, ocean quahog and shelf banks and mounds in the Southern North Sea, do you have a preference or comments on the following combinations to represent these features, bearing in mind Turbot Bank will need to be designated to represent sandeel in this region:

- Firth of Forth Banks Complex
- Turbot bank and Norwegian Boundary Sedimentary Plain
- Or Firth of Forth Banks Complex, Turbot bank and Norwegian Boundary Sedimentary Plain

Comments

29. Do you have any comments on the case for designation, management options and socioeconomic assessments for the preference you have indicated in the question above, regarding alternatives for representing offshore subtidal sands and gravels, ocean quahog and shelf banks and mounds in the Southern North Sea?

Yes No

Comments

30. Recognising the scientific advice from JNCC included alternatives for representing the burrowed mud feature in the Fladens, do you have a preference or comments on the following combinations to represent these features, bearing in mind the part of Central Fladen (known as Central Fladen (Core)) containing tall seapen (*Funiculina quadrangularis*) will need to be designated to represent tall seapen in this region:

- Central Fladen pMPA only
- The tall sea-pen component of Central Fladen, plus Western Fladen
- Or the tall sea-pen component of Central Fladen, plus South-East Fladen.

Comments

31. Do you have any comments on the case for designation, management options and socioeconomic assessments for the preference you have indicated in the question above, regarding alternatives for representing the burrowed mud feature in the Fladens?

Yes No

Comments

32. Recognising the scientific advice from JNCC included alternatives for representing offshore subtidal sands and gravels, offshore deep sea mud, and burrowed mud in OSPAR Regions III and V, do you have a preference or comments on the following combinations to represent these features:

South-West Sula Sgeir and Hebridean slope
Or Geikie slide and Hebridean slope

Comments

33. Do you have any comments on the case for designation, management options and socioeconomic assessments for the preference you have indicated in the question above, regarding alternatives for representing offshore subtidal sands and gravels, offshore deep sea mud, and burrowed mud in OSPAR Regions III and V?

Yes No

Comments

Sustainability Appraisal

34. Do you have any comments on the Sustainability Appraisal of the MPA network as a whole?

Yes No

Comments Due to the nature of the socio-economic assessment and the way it was required to be carried out, only the costs associated with extra monitoring and regulation could be included. These are costs which can be quantified easily. The potential costs incurred by the sector include the risk to future investment, delays in obtaining permission to create new sites and the inability to expand or develop a site to make it more efficient. These costs are difficult to quantify and verify and are therefore not included in the analysis. This does not mean they do not exist and this should be taken into consideration.

Final Thoughts

35. On the basis of your preferences on which pMPAs should be designated, do you view this to form a complete or ecologically coherent network, subject to the completion and recommendations of SNH's further work on the 4 remaining search locations?

Yes No

Comments

36. Do you have any other comments on the case for designation, management options, environmental or socioeconomic assessments of the pMPAs, or the network as a whole?

Yes No

Comments The Management Options will be a crucial part in establishing how current activities and protected species and features interact. The management options papers provide a useful start for this process. However, it is only once the stakeholder groups are set up that any meaningful management decisions will be made. It is important for any stakeholder group to clearly represent the industries and activities which occur in the area, this approach would help in all parties understanding the legitimate expectations of the companies involved in regard to their

business competitiveness. There is a risk that single issue pressure groups could hijack meetings and discussions for their own aims rather than for the benefit of the MPA.