

## **How to Respond**

### **Responding to this consultation**

You are invited to respond to this consultation by 13 November 2013 using the form in Appendices D & E.

**Please send your response with the completed Respondent Information Form (see 'Handling your Response' below) to:**

Responses can be sent by email, by post or by online electronic response form:

Email: [Marine Environment Mailbox@scotland.gsi.gov.uk](mailto:Marine_Environment_Mailbox@scotland.gsi.gov.uk)

Post: MPA Network Consultation  
Scottish Government  
Marine Planning and Policy Division  
Area 1-A South  
Victoria Quay  
Edinburgh  
EH66QQ

On line: [www.scotland.gov.uk/consultations](http://www.scotland.gov.uk/consultations)

If you have any enquiries please send them to [Marine Environment Mailbox@scotland.gsi.gov.uk](mailto:Marine_Environment_Mailbox@scotland.gsi.gov.uk) or call Sebastian Howell on 0131 244 5301, Michael McLeod on 0131 244 5562 or Paul Cook on 0131 244 0381.

We would be grateful if you would use the consultation questionnaire provided in your response as this will aid our analysis of the responses received. This consultation, and all other Scottish Government consultation exercises, can be viewed online on the consultation web pages of the Scottish Government website at <http://www.scotland.gov.uk/consultations>.

The Scottish Government has an email alert system for consultations, <http://register.scotland.gov.uk>. This system allows stakeholder individuals and organisations to register and receive a weekly email containing details of all new consultations (including web links). It complements, but in no way replaces SG distribution lists, and is designed to allow stakeholders to keep up to date with all SG consultation activity, and therefore be alerted at the earliest opportunity to those of most interest. We would encourage you to register.

### **Handling your response**

We need to know how you wish your response to be handled and, in particular, whether you are happy for your response to be made public. Please complete and return the **Respondent Information Form** which forms part of the consultation questionnaire as this will ensure that we treat your response appropriately. If you ask

for your response not to be published we will regard it as confidential, and we will treat it accordingly.

All respondents should be aware that the Scottish Government are subject to the provisions of the Freedom of Information (Scotland) Act 2002 and would therefore have to consider any request made to it under the Act for information relating to responses made to this consultation exercise.

### **Next steps in the process**

Where respondents have given permission for their response to be made public and after we have checked that they contain no potentially defamatory material, responses will be made available to the public in the Scottish Government Library and on the SEConsult web pages. You can make arrangements to view responses by contacting the SG Library on 0131 244 4552. Responses can be copied and sent to you, but a charge may be made for this service.

### **What happens next?**

Following the closing date, all responses will be analysed and considered to help us make a decision on the shape of the MPA network. We aim to issue a report on this consultation process in early 2014.

### **Comments and complaints**

If you have any comments about how this consultation exercise has been conducted, please send them to Sebastian Howell. (0131 244 5301 or [Sebastian.howell@scotland.gsi.gov.uk](mailto:Sebastian.howell@scotland.gsi.gov.uk)).

### **The Scottish Government Consultation Process**

Consultation is an essential and important aspect of Scottish Government working methods. Given the wide-ranging areas of work of the Scottish Government, there are many varied types of consultation. However, in general, Scottish Government consultation exercises aim to provide opportunities for all those who wish to express their opinions on a proposed area of work to do so in ways which will inform and enhance that work.

The Scottish Government encourages consultation that is thorough, effective and appropriate to the issue under consideration and the nature of the target audience. Consultation exercises take account of a wide range of factors, and no two exercises are likely to be the same.

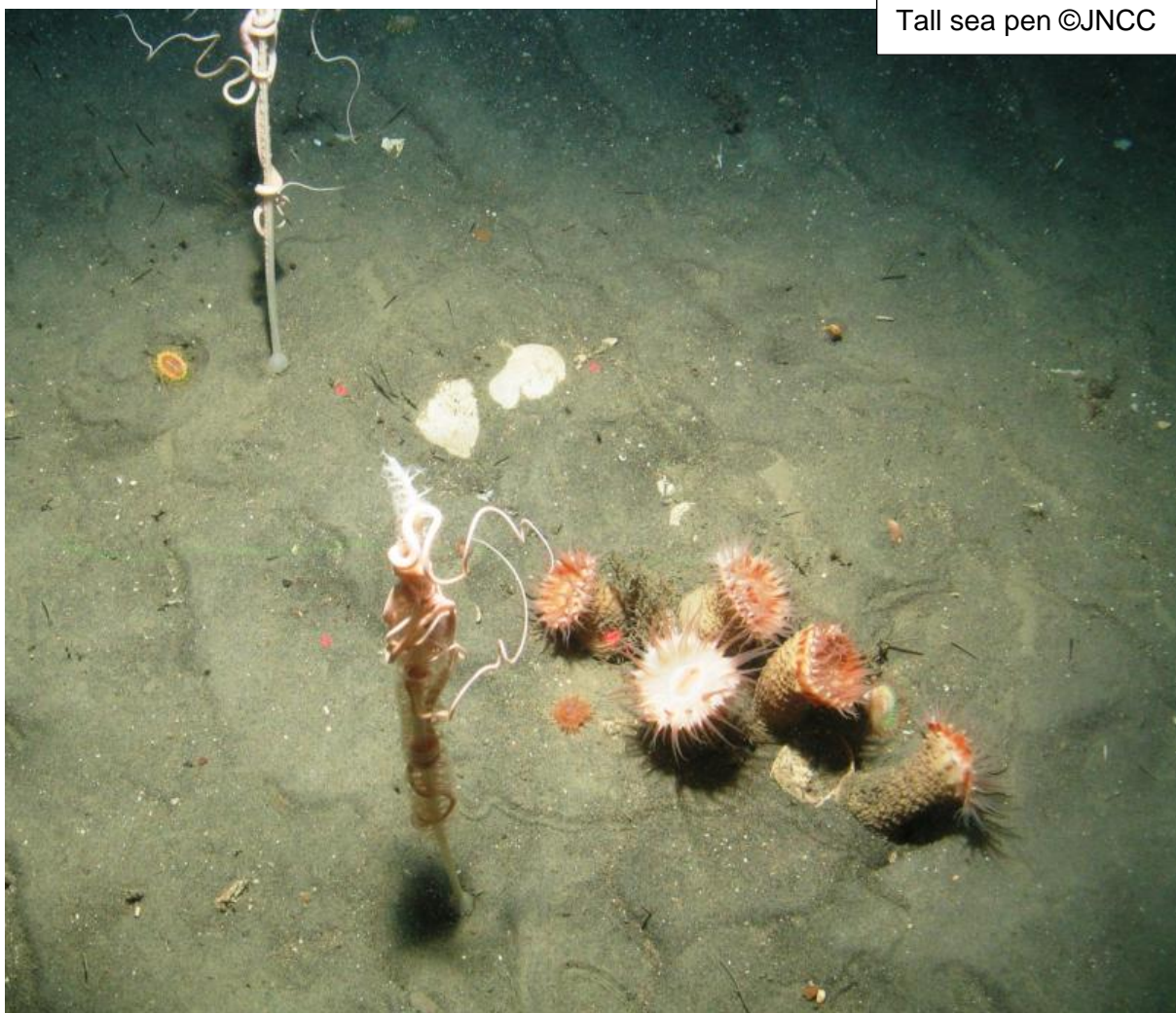
Typically Scottish Government consultations involve a written paper inviting answers to specific questions or more general views about the material presented. Written papers are distributed to organisations and individuals with an interest in the issue, and they are also placed on the Scottish Government web site enabling a wider audience to access the paper and submit their responses.

Consultation exercises may also involve seeking views in a number of different ways, such as through public meetings, focus groups or questionnaire exercises.

Copies of all the written responses received to a consultation exercise (except those where the individual or organisation requested confidentiality) are placed in the Scottish Government library at Saughton House, Edinburgh (K Spur, Saughton House, Broomhouse Drive, Edinburgh, EH113XD, telephone 0131 244 4565).

All Scottish Government consultation papers and related publications (e.g. analysis of response reports) can be accessed at: Scottish Government consultations (<http://www.scotland.gov.uk/consultations>) The views and suggestions detailed in consultation responses are analysed and used as part of the decision making process, along with a range of other available information and evidence. Depending on the nature of the consultation exercise the responses received may: indicate the need for policy development or review; inform the development of a particular policy; help decisions to be made between alternative policy proposals; be used to finalise legislation before it is implemented. Final decisions on the issues under consideration will also take account of a range of other factors, including other available information and research evidence.

**While details of particular circumstances described in a response to a consultation exercise may usefully inform the policy process, consultation exercises cannot address individual concerns and comments, which should be directed to the relevant public body.**



## **CONSULTATION QUESTIONS**

**1. Do you support the development of an MPA network in Scotland's Seas?**

Yes  No

Comments

### **Individual possible Nature Conservation MPAs**

**2. Do you have any comments on the case for designation, management options and socioeconomic assessment for the *Clyde Sea Sill* possible Nature Conservation MPA?**

Designation: Yes  No

Comments

Management Options: Yes  No

Comments

Socioeconomic Assessment: Yes  No

Comments

All of the above: Yes  No

Comments

**3. Do you have any comments on the case for designation, management options and socioeconomic assessment for the *East Caithness Cliffs* possible Nature Conservation MPA?**

Designation: Yes  No

Comments

Management Options: Yes  No

Comments

Socioeconomic Assessment: Yes  No

Comments

All of the above: Yes  No

Comments

**4. Do you have any comments on the case for designation, management options and socioeconomic assessment for the *East of Gannet and Montrose Fields* possible Nature Conservation MPA?**

Designation: Yes  No

Comments

Management Options: Yes  No

Comments

Socioeconomic Assessment: Yes  No

Comments

All of the above: Yes  No

Comments

**5. Do you have any comments on the case for designation, management options and socioeconomic assessment for the *Faroe-Shetland sponge belt* possible Nature Conservation MPA?**

Designation: Yes  No

Comments

Management Options: Yes  No

Comments

Socioeconomic Assessment: Yes  No

Comments

All of the above: Yes  No

Comments

**6. Do you have any comments on the case for designation, management options and socioeconomic assessment for the *Fetlar to Haroldswick* possible Nature Conservation MPA?**

Designation: Yes  No

Comments

Management Options: Yes  No

Comments

Socioeconomic Assessment: Yes  No

Comments

All of the above: Yes  No

Comments

**7. Do you have any comments on the case for designation, management options and socioeconomic assessment for the *Hatton-Rockall Basin* possible Nature Conservation MPA?**

Designation: Yes  No

Comments

Management Options: Yes  No

Comments

Socioeconomic Assessment: Yes  No

Comments

All of the above: Yes  No

Comments

**8. Do you have any comments on the case for designation, management options and socioeconomic assessment for the *Loch Creran* possible Nature Conservation MPA?**

Designation: Yes  No

Comments

Management Options: Yes  No

Comments

Socioeconomic Assessment: Yes  No

Comments

All of the above: Yes  No

Comments

**9. Do you have any comments on the case for designation, management options and socioeconomic assessment for the *Loch Sunart* possible Nature Conservation MPA?**

Designation: Yes  No

Comments

Management Options: Yes  No

Comments

Socioeconomic Assessment: Yes  No

Comments

All of the above: Yes  No

Comments

**10. Do you have any comments on the case for designation, management options and socioeconomic assessment for the *Loch Sunart to the Sound of Jura* possible Nature Conservation MPA?**

Designation: Yes  No

Comments

Management Options: Yes  No

Comments

Socioeconomic Assessment: Yes  No

Comments

All of the above: Yes  No

Comments



**11. Do you have any comments on the case for designation, management options and socioeconomic assessment for the *Loch Sween* possible Nature Conservation MPA?**

Designation: Yes  No

Comments

Management Options: Yes  No

Comments

Socioeconomic Assessment: Yes  No

Comments

All of the above: Yes  No

Comments

**12. Do you have any comments on the case for designation, management options and socioeconomic assessment for the *Lochs Duich, Long and Aish* possible Nature Conservation MPA?**

Designation: Yes  No

Comments

Management Options: Yes  No

Comments

Socioeconomic Assessment: Yes  No

Comments

All of the above: Yes  No

Comments

**13. Do you have any comments on the case for designation, management options and socioeconomic assessment for the *Monach Isles* possible Nature Conservation MPA?**

Designation: Yes  No

Comments

Management Options: Yes  No

Comments

Socioeconomic Assessment: Yes  No

Comments

All of the above: Yes  No

Comments

**14. Do you have any comments on the case for designation, management options and socioeconomic assessment for the *Mousa to Boddam* possible Nature Conservation MPA?**

Designation: Yes  No

Comments

Management Options: Yes  No

Comments

Socioeconomic Assessment: Yes  No

Comments

All of the above: Yes  No

Comments

**15. Do you have any comments on the case for designation, management options and socioeconomic assessment for the *North-east Faroe Shetland Channel* possible Nature Conservation MPA?**

Designation: Yes  No

Comments

Management Options: Yes  No

Comments

Socioeconomic Assessment: Yes  No

Comments

All of the above: Yes  No

Comments

**16. Do you have any comments on the case for designation, management options and socioeconomic assessment for the *North-west Orkney* possible Nature Conservation MPA?**

Designation: Yes  No

Comments

Management Options: Yes  No

Comments

Socioeconomic Assessment: Yes  No

Comments

All of the above: Yes  No

Comments

**17. Do you have any comments on the case for designation, management options and socioeconomic assessment for the *North-west sea lochs and Summer Isles* possible Nature Conservation MPA?**

Designation: Yes  No

Comments

Management Options: Yes  No

Comments

Socioeconomic Assessment: Yes  No

Comments

All of the above: Yes  No

Comments

**18. Do you have any comments on the case for designation, management options and socioeconomic assessment for the *Noss Head* possible Nature Conservation MPA?**

Designation: Yes  No

Comments

Management Options: Yes  No

Comments

Socioeconomic Assessment: Yes  No

Comments

All of the above: Yes  No

Comments

**19. Do you have any comments on the case for designation, management options and socioeconomic assessment for the *Papa Westray* possible Nature Conservation MPA?**

Designation: Yes  No

Comments

Management Options: Yes  No

Comments

Socioeconomic Assessment: Yes  No

Comments

All of the above: Yes  No

Comments

**20. Do you have any comments on the case for designation, management options and socioeconomic assessment for the *Rosemary Bank Seamount* possible Nature Conservation MPA?**

Designation: Yes  No

Comments

Management Options: Yes  No

Comments

Socioeconomic Assessment: Yes  No

Comments

All of the above: Yes  No

Comments

**21. Do you have any comments on the case for designation, management options and socioeconomic assessment for the *Small Isles* possible Nature Conservation MPA?**

Designation: Yes  No

Comments

Management Options: Yes  No

Comments

Socioeconomic Assessment: Yes  No

Comments

All of the above: Yes  No

Comments

**22. Do you have any comments on the case for designation, management options and socioeconomic assessment for the *South Arran* possible Nature Conservation MPA?**

Designation: Yes  No

Comments

Management Options: Yes  No

Comments

Socioeconomic Assessment: Yes  No

Comments

All of the above: Yes  No

Comments

**23. Do you have any comments on the case for designation, management options and socioeconomic assessment for *The Barra Fan and Hebrides Terrace Seamount* possible Nature Conservation MPA?**

Designation: Yes  No

Comments

Management Options: Yes  No

Comments

Socioeconomic Assessment: Yes  No

Comments

All of the above: Yes  No

Comments

**24. Do you have any comments on the case for designation, management options and socioeconomic assessment for the *Turbot Bank* possible Nature Conservation MPA?**

Designation: Yes  No

Comments

Management Options: Yes  No

Comments

Socioeconomic Assessment: Yes  No

Comments

All of the above: Yes  No

Comments

**25. Do you have any comments on the case for designation, management options and socioeconomic assessment for the *Upper Loch Fyne and Loch Goil* possible Nature Conservation MPA?**

Designation: Yes  No

Comments

Management Options: Yes  No

Comments

Socioeconomic Assessment: Yes  No

Comments

All of the above: Yes  No

Comments

**26. Do you have any comments on the case for designation, management options and socioeconomic assessment for the *West Shetland Shelf (formerly Windsock)* possible Nature Conservation MPA?**

Designation: Yes  No

Comments

Management Options: Yes  No

Comments

Socioeconomic Assessment: Yes  No

Comments

All of the above: Yes  No

Comments



**27. Do you have any comments on the case for designation, management options and socioeconomic assessment for the *Wyre and Rousay Sounds* possible Nature Conservation MPA?**

Designation:

Yes  No

Comments

Management Options:

Yes  No

Comments

Socioeconomic Assessment:

Yes  No

Comments

All of the above:

Yes  No

Comments

## Choices to represent features in the MPA Network

**28. Recognising the scientific advice from JNCC included alternatives for representing offshore subtidal sands and gravels, ocean quahog and shelf banks and mounds in the Southern North Sea, do you have a preference or comments on the following combinations to represent these features, bearing in mind Turbot Bank will need to be designated to represent sandeel in this region:**

- Firth of Forth Banks Complex
- Turbot bank and Norwegian Boundary Sedimentary Plain
- Or Firth of Forth Banks Complex, Turbot bank and Norwegian Boundary Sedimentary Plain

Comments

**29. Do you have any comments on the case for designation, management options and socioeconomic assessments for the preference you have indicated in the question above, regarding alternatives for representing offshore subtidal sands and gravels, ocean quahog and shelf banks and mounds in the Southern North Sea?**

Yes  No

Comments

**30. Recognising the scientific advice from JNCC included alternatives for representing the burrowed mud feature in the Fladens, do you have a preference or comments on the following combinations to represent these features, bearing in mind the part of Central Fladen (known as Central Fladen (Core)) containing tall seapen (*Funiculina quadrangularis*) will need to be designated to represent tall seapen in this region:**

- Central Fladen pMPA only
- The tall sea-pen component of Central Fladen, plus Western Fladen
- Or the tall sea-pen component of Central Fladen, plus South-East Fladen.

Comments

**31. Do you have any comments on the case for designation, management options and socioeconomic assessments for the preference you have indicated in the question above, regarding alternatives for representing the burrowed mud feature in the Fladens?**

Yes  No

Comments

**32. Recognising the scientific advice from JNCC included alternatives for representing offshore subtidal sands and gravels, offshore deep sea mud, and burrowed mud in OSPAR Regions III and V, do you have a preference or comments on the following combinations to represent these features:**

South-West Sula Sgeir and Hebridean slope  
Or Geikie slide and Hebridean slope

Comments

**33. Do you have any comments on the case for designation, management options and socioeconomic assessments for the preference you have indicated in the question above, regarding alternatives for representing offshore subtidal sands and gravels, offshore deep sea mud, and burrowed mud in OSPAR Regions III and V?**

Yes  No

Comments

## **Sustainability Appraisal**

**34. Do you have any comments on the Sustainability Appraisal of the MPA network as a whole?**

Yes  No

Comments

## **Final Thoughts**

**35. On the basis of your preferences on which pMPAs should be designated, do you view this to form a complete or ecologically coherent network, subject to the completion and recommendations of SNH's further work on the 4 remaining search locations?**

Yes  No

Comments

**36. Do you have any other comments on the case for designation, management options, environmental or socioeconomic assessments of the pMPAs, or the network as a whole?**

Yes  No

We note reference to SPAs, SACs and SSSIs as potentially fulfilling an important aspect in the coherence of the MPA network. Whether this is achieved by inference or through additional burdens upon these existing designations or associated marine users is far from clear. We would like to better understand what this actually means for designated sites generally, and particularly those adjacent to our facilities.