

How to Respond

Responding to this consultation

You are invited to respond to this consultation by 13 November 2013 using the form in Appendices D & E.

Please send your response with the completed Respondent Information Form (see 'Handling your Response' below) to:

Responses can be sent by email, by post or by online electronic response form:

Email: [Marine Environment Mailbox@scotland.gsi.gov.uk](mailto:Marine_Environment_Mailbox@scotland.gsi.gov.uk)

Post: MPA Network Consultation
Scottish Government
Marine Planning and Policy Division
Area 1-A South
Victoria Quay
Edinburgh
EH66QQ

On line: www.scotland.gov.uk/consultations

If you have any enquiries please send them to [Marine Environment Mailbox@scotland.gsi.gov.uk](mailto:Marine_Environment_Mailbox@scotland.gsi.gov.uk) or call Sebastian Howell on 0131 244 5301, Michael McLeod on 0131 244 5562 or Paul Cook on 0131 244 0381.

We would be grateful if you would use the consultation questionnaire provided in your response as this will aid our analysis of the responses received. This consultation, and all other Scottish Government consultation exercises, can be viewed online on the consultation web pages of the Scottish Government website at <http://www.scotland.gov.uk/consultations>.

The Scottish Government has an email alert system for consultations, <http://register.scotland.gov.uk>. This system allows stakeholder individuals and organisations to register and receive a weekly email containing details of all new consultations (including web links). It complements, but in no way replaces SG distribution lists, and is designed to allow stakeholders to keep up to date with all SG consultation activity, and therefore be alerted at the earliest opportunity to those of most interest. We would encourage you to register.

Handling your response

We need to know how you wish your response to be handled and, in particular, whether you are happy for your response to be made public. Please complete and return the **Respondent Information Form** which forms part of the consultation questionnaire as this will ensure that we treat your response appropriately. If you ask

for your response not to be published we will regard it as confidential, and we will treat it accordingly.

All respondents should be aware that the Scottish Government are subject to the provisions of the Freedom of Information (Scotland) Act 2002 and would therefore have to consider any request made to it under the Act for information relating to responses made to this consultation exercise.

Next steps in the process

Where respondents have given permission for their response to be made public and after we have checked that they contain no potentially defamatory material, responses will be made available to the public in the Scottish Government Library and on the SEConsult web pages. You can make arrangements to view responses by contacting the SG Library on 0131 244 4552. Responses can be copied and sent to you, but a charge may be made for this service.

What happens next?

Following the closing date, all responses will be analysed and considered to help us make a decision on the shape of the MPA network. We aim to issue a report on this consultation process in early 2014.

Comments and complaints

If you have any comments about how this consultation exercise has been conducted, please send them to Sebastian Howell. (0131 244 5301 or Sebastian.howell@scotland.gsi.gov.uk).

The Scottish Government Consultation Process

Consultation is an essential and important aspect of Scottish Government working methods. Given the wide-ranging areas of work of the Scottish Government, there are many varied types of consultation. However, in general, Scottish Government consultation exercises aim to provide opportunities for all those who wish to express their opinions on a proposed area of work to do so in ways which will inform and enhance that work.

The Scottish Government encourages consultation that is thorough, effective and appropriate to the issue under consideration and the nature of the target audience. Consultation exercises take account of a wide range of factors, and no two exercises are likely to be the same.

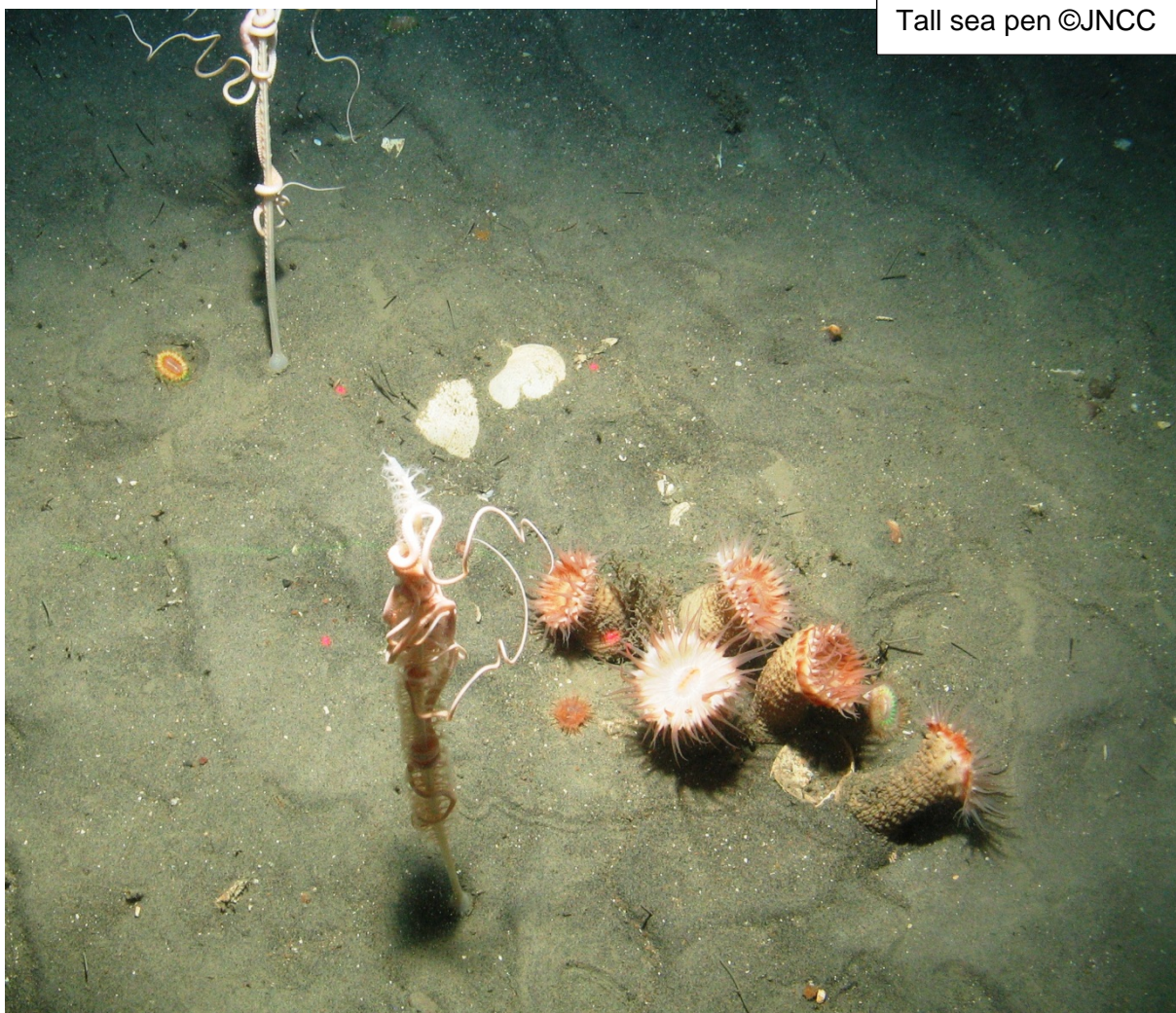
Typically Scottish Government consultations involve a written paper inviting answers to specific questions or more general views about the material presented. Written papers are distributed to organisations and individuals with an interest in the issue, and they are also placed on the Scottish Government web site enabling a wider audience to access the paper and submit their responses.

Consultation exercises may also involve seeking views in a number of different ways, such as through public meetings, focus groups or questionnaire exercises.

Copies of all the written responses received to a consultation exercise (except those where the individual or organisation requested confidentiality) are placed in the Scottish Government library at Saughton House, Edinburgh (K Spur, Saughton House, Broomhouse Drive, Edinburgh, EH113XD, telephone 0131 244 4565).

All Scottish Government consultation papers and related publications (e.g. analysis of response reports) can be accessed at: Scottish Government consultations (<http://www.scotland.gov.uk/consultations>) The views and suggestions detailed in consultation responses are analysed and used as part of the decision making process, along with a range of other available information and evidence. Depending on the nature of the consultation exercise the responses received may: indicate the need for policy development or review; inform the development of a particular policy; help decisions to be made between alternative policy proposals; be used to finalise legislation before it is implemented. Final decisions on the issues under consideration will also take account of a range of other factors, including other available information and research evidence.

While details of particular circumstances described in a response to a consultation exercise may usefully inform the policy process, consultation exercises cannot address individual concerns and comments, which should be directed to the relevant public body.



CONSULTATION QUESTIONS

1. Do you support the development of an MPA network in Scotland's Seas?

Yes No

The Scottish Salmon Producers' Organisation is responding to this consultation on behalf of its membership, consisting of >98% of Scottish farmed salmon production. We support the principle of the development of a network of MPAs which will protect and safeguard specific species and features which are important to maintaining the biodiversity of Scotland's seas. The existing network of Natura 2000 areas (including SPAs and SACs) will be enhanced by the proposed MPAs leading to a coherent network of protected areas. Our support for the proposed areas is qualified by the essential requirement that our industry is permitted to continue to develop in appropriate locations which may include areas which are proposed MPAs. There are at least 10 areas of specific interest to our members, notably inshore sea lochs, where finfish aquaculture currently takes place. It is important to make the point in this consultation that the majority of the farms within the proposed MPAs have existed for many years, operating in a fully sustainable manner under the terms of existing regulations. There is a need to ensure these farms are able to continue to operate and develop by ensuring they continue to be both economically viable and technologically up to date, while taking account of the species and features which are offered protection under the MPA scheme. The scale of some of the MPAs is also of some concern to the fish farming sector since it seems the areas relate more to geographically convenient lines drawn on a map rather than to the specific locations of species to be protected.

The lack of knowledge on locations of specific features or species should not be used to increase the size of an area to the detriment of the economic activities carried out in that area. A proportionate balance must be reached to meet the MPA objectives whilst not damaging established and important economic activities.

We will not comment directly on the individual proposed MPA locations, leaving this to individual companies who operate in the proposed areas. We will comment on the overall process.

Individual possible Nature Conservation MPAs

2. Do you have any comments on the case for designation, management options and socioeconomic assessment for the *Clyde Sea Sill* possible Nature Conservation MPA?

Designation: Yes No

Comments

Management Options: Yes No

Comments

Socioeconomic Assessment: Yes No

Comments

All of the above: Yes No

Comments

3. Do you have any comments on the case for designation, management options and socioeconomic assessment for the *East Caithness Cliffs* possible Nature Conservation MPA?

Designation: Yes No

Comments

Management Options: Yes No

Comments

Socioeconomic Assessment: Yes No

Comments

All of the above: Yes No

Comments

4. Do you have any comments on the case for designation, management options and socioeconomic assessment for the *East of Gannet and Montrose Fields* possible Nature Conservation MPA?

Designation: Yes No

Comments

Management Options: Yes No

Comments

Socioeconomic Assessment: Yes No

Comments

All of the above: Yes No

Comments

5. Do you have any comments on the case for designation, management options and socioeconomic assessment for the *Faroe-Shetland sponge belt* possible Nature Conservation MPA?

Designation: Yes No

Comments

Management Options: Yes No

Comments

Socioeconomic Assessment: Yes No

Comments

All of the above: Yes No

Comments

6. Do you have any comments on the case for designation, management options and socioeconomic assessment for the *Fetlar to Haroldswick* possible Nature Conservation MPA?

Designation: Yes No

Comments

Management Options: Yes No

Comments

Socioeconomic Assessment: Yes No

Comments

All of the above: Yes No

Comments

7. Do you have any comments on the case for designation, management options and socioeconomic assessment for the *Hatton-Rockall Basin* possible Nature Conservation MPA?

Designation: Yes No

Comments

Management Options: Yes No

Comments

Socioeconomic Assessment: Yes No

Comments

All of the above: Yes No

Comments

8. Do you have any comments on the case for designation, management options and socioeconomic assessment for the *Loch Creran* possible Nature Conservation MPA?

Designation: Yes No

Comments

Management Options: Yes No

Comments

Socioeconomic Assessment: Yes No

Comments

All of the above: Yes No

Comments

9. Do you have any comments on the case for designation, management options and socioeconomic assessment for the *Loch Sunart* possible Nature Conservation MPA?

Designation: Yes No

Comments

Management Options: Yes No

Comments

Socioeconomic Assessment: Yes No

Comments

All of the above: Yes No

Comments

10. Do you have any comments on the case for designation, management options and socioeconomic assessment for the *Loch Sunart to the Sound of Jura* possible Nature Conservation MPA?

Designation: Yes No

Comments

Management Options: Yes No

Comments

Socioeconomic Assessment: Yes No

Comments

All of the above: Yes No

Comments

11. Do you have any comments on the case for designation, management options and socioeconomic assessment for the *Loch Sween* possible Nature Conservation MPA?

Designation: Yes No

Comments

Management Options: Yes No

Comments

Socioeconomic Assessment: Yes No

Comments

All of the above: Yes No

Comments

12. Do you have any comments on the case for designation, management options and socioeconomic assessment for the *Lochs Duich, Long and Aish* possible Nature Conservation MPA?

Designation: Yes No

Comments

Management Options: Yes No

Comments

Socioeconomic Assessment: Yes No

Comments

All of the above: Yes No

Comments

13. Do you have any comments on the case for designation, management options and socioeconomic assessment for the *Monach Isles* possible Nature Conservation MPA?

Designation: Yes No

Comments

Management Options: Yes No

Comments

Socioeconomic Assessment: Yes No

Comments

All of the above: Yes No

Comments

14. Do you have any comments on the case for designation, management options and socioeconomic assessment for the *Mousa to Boddam* possible Nature Conservation MPA?

Designation: Yes No

Comments

Management Options: Yes No

Comments

Socioeconomic Assessment: Yes No

Comments

All of the above: Yes No

Comments

15. Do you have any comments on the case for designation, management options and socioeconomic assessment for the *North-east Faroe Shetland Channel* possible Nature Conservation MPA?

Designation: Yes No

Comments

Management Options: Yes No

Comments

Socioeconomic Assessment: Yes No

Comments

All of the above: Yes No

Comments

16. Do you have any comments on the case for designation, management options and socioeconomic assessment for the *North-west Orkney* possible Nature Conservation MPA?

Designation: Yes No

Comments

Management Options: Yes No

Comments

Socioeconomic Assessment: Yes No

Comments

All of the above: Yes No

Comments

17. Do you have any comments on the case for designation, management options and socioeconomic assessment for the *North-west sea lochs and Summer Isles* possible Nature Conservation MPA?

Designation: Yes No

Comments

Management Options: Yes No

Comments

Socioeconomic Assessment: Yes No

Comments

All of the above: Yes No

Comments

18. Do you have any comments on the case for designation, management options and socioeconomic assessment for the *Noss Head* possible Nature Conservation MPA?

Designation: Yes No

Comments

Management Options: Yes No

Comments

Socioeconomic Assessment: Yes No

Comments

All of the above: Yes No

Comments

19. Do you have any comments on the case for designation, management options and socioeconomic assessment for the *Papa Westray* possible Nature Conservation MPA?

Designation: Yes No

Comments

Management Options: Yes No

Comments

Socioeconomic Assessment: Yes No

Comments

All of the above: Yes No

Comments

20. Do you have any comments on the case for designation, management options and socioeconomic assessment for the *Rosemary Bank Seamount* possible Nature Conservation MPA?

Designation: Yes No

Comments

Management Options: Yes No

Comments

Socioeconomic Assessment: Yes No

Comments

All of the above: Yes No

Comments

21. Do you have any comments on the case for designation, management options and socioeconomic assessment for the *Small Isles* possible Nature Conservation MPA?

Designation: Yes No

Comments

Management Options: Yes No

Comments

Socioeconomic Assessment: Yes No

Comments

All of the above: Yes No

Comments

22. Do you have any comments on the case for designation, management options and socioeconomic assessment for the *South Arran* possible Nature Conservation MPA?

Designation: Yes No

Comments

Management Options: Yes No

Comments

Socioeconomic Assessment: Yes No

Comments

All of the above: Yes No

Comments

23. Do you have any comments on the case for designation, management options and socioeconomic assessment for *The Barra Fan and Hebrides Terrace Seamount* possible Nature Conservation MPA?

Designation: Yes No

Comments

Management Options: Yes No

Comments

Socioeconomic Assessment: Yes No

Comments

All of the above: Yes No

Comments

24. Do you have any comments on the case for designation, management options and socioeconomic assessment for the *Turbot Bank* possible Nature Conservation MPA?

Designation: Yes No

Comments

Management Options: Yes No

Comments

Socioeconomic Assessment: Yes No

Comments

All of the above: Yes No

Comments

25. Do you have any comments on the case for designation, management options and socioeconomic assessment for the *Upper Loch Fyne and Loch Goil* possible Nature Conservation MPA?

Designation: Yes No

Comments

Management Options: Yes No

Comments

Socioeconomic Assessment: Yes No

Comments

All of the above: Yes No

Comments

26. Do you have any comments on the case for designation, management options and socioeconomic assessment for the *West Shetland Shelf (formerly Windsock)* possible Nature Conservation MPA?

Designation: Yes No

Comments

Management Options: Yes No

Comments

Socioeconomic Assessment: Yes No

Comments

All of the above: Yes No

Comments

27. Do you have any comments on the case for designation, management options and socioeconomic assessment for the *Wyre and Rousay Sounds* possible Nature Conservation MPA?

Designation:

Yes No

Comments

Management Options:

Yes No

Comments

Socioeconomic Assessment:

Yes No

Comments

All of the above:

Yes No

Comments

Choices to represent features in the MPA Network

28. Recognising the scientific advice from JNCC included alternatives for representing offshore subtidal sands and gravels, ocean quahog and shelf banks and mounds in the Southern North Sea, do you have a preference or comments on the following combinations to represent these features, bearing in mind Turbot Bank will need to be designated to represent sandeel in this region:

- Firth of Forth Banks Complex
- Turbot bank and Norwegian Boundary Sedimentary Plain
- Or Firth of Forth Banks Complex, Turbot bank and Norwegian Boundary Sedimentary Plain

Comments

29. Do you have any comments on the case for designation, management options and socioeconomic assessments for the preference you have indicated in the question above, regarding alternatives for representing offshore subtidal sands and gravels, ocean quahog and shelf banks and mounds in the Southern North Sea?

Yes No

Comments

30. Recognising the scientific advice from JNCC included alternatives for representing the burrowed mud feature in the Fladens, do you have a preference or comments on the following combinations to represent these features, bearing in mind the part of Central Fladen (known as Central Fladen (Core)) containing tall seapen (*Funiculina quadrangularis*) will need to be designated to represent tall seapen in this region:

- Central Fladen pMPA only
- The tall sea-pen component of Central Fladen, plus Western Fladen
- Or the tall sea-pen component of Central Fladen, plus South-East Fladen.

Comments

31. Do you have any comments on the case for designation, management options and socioeconomic assessments for the preference you have indicated in the question above, regarding alternatives for representing the burrowed mud feature in the Fladens?

Yes No

Comments

32. Recognising the scientific advice from JNCC included alternatives for representing offshore subtidal sands and gravels, offshore deep sea mud, and burrowed mud in OSPAR Regions III and V, do you have a preference or comments on the following combinations to represent these features:

South-West Sula Sgeir and Hebridean slope
Or Geikie slide and Hebridean slope

Comments

33. Do you have any comments on the case for designation, management options and socioeconomic assessments for the preference you have indicated in the question above, regarding alternatives for representing offshore subtidal sands and gravels, offshore deep sea mud, and burrowed mud in OSPAR Regions III and V?

Yes No

Comments

Sustainability Appraisal

34. Do you have any comments on the Sustainability Appraisal of the MPA network as a whole?

Yes No

Due to the nature of the socio-economic assessment and the way it was required to be carried out, only the costs associated with extra monitoring and regulation could be included. These are costs which can be quantified easily. The potential costs incurred by the sector include the risk to future investment, delays in obtaining permission to create new sites and the inability to expand or develop a site to make it more efficient. These costs are difficult to quantify and verify and are therefore not included in the analysis. This does not mean they do not exist and this should be taken into consideration.

The approach to displacement within the proposed MPAs is a sensible one. This is based around the requirement that any changes / new sites are not situated where they have a significant effect on the protected features / species. There may be indirect displacement where companies decide that applications for new sites in a proposed MPA do not merit the additional costs and uncertainty which are either the direct costs of monitoring or potential costs as described above. The statement explaining that existing consents will not be reviewed is welcomed by the industry. A sensible approach to changes in existing consents should be taken where they do not adversely impact the protected feature / species.

There have been no alternative locations suggested for the proposed inshore / sea loch MPAs and this is disappointing due to the overall number of proposed MPAs which affect the finfish aquaculture sector.

Final Thoughts

35. On the basis of your preferences on which pMPAs should be designated, do you view this to form a complete or ecologically coherent network, subject to the completion and recommendations of SNH's further work on the 4 remaining search locations?

Yes No

The SSPO does not have any specific preferences on which MPAs should be designated or not as this is for individual companies to respond to. As a whole network the proposed areas cover a very significant geographical area. It would be our preference to reduce the overall size of the areas to best protect the species and features in question. The current 'broad brush' approach is inappropriate and needs to be more targeted to ensure the species and features get the protection they need.

36. Do you have any other comments on the case for designation, management options, environmental or socioeconomic assessments of the pMPAs, or the network as a whole?

Yes No

The Management Options will be a crucial part in establishing how current activities and protected species and features interact. The management options papers provide a useful start for this process. However, it is only once the stakeholder groups are set up that any meaningful management decisions will be made. It is important for any stakeholder group to clearly represent the industries and activities which occur in the area. This approach would help all parties understand the legitimate expectations of the companies involved in regard to their business competitiveness. There is a risk that single issue pressure groups could hijack meetings and discussions for their own aims rather than for the benefit of the MPA.

Management options and the effect on future opportunities for existing water body users and industry stakeholders:

A number of the proposed MPAs are located in areas that have existing salmon farming activities, with a wide range of licensed and consented sites and facilities. It is the industry's understanding that there would be no likelihood of changes being sought with regard to existing operations and consents. Whilst we acknowledge that position, it is necessary to seek some clarity about the flexibility measures within any future designated MPA. Industry will continue to upgrade both site and production facilities as it strives to improve performance and output. There is a rolling plan to implement the latest technological developments on an area or site basis. In order to achieve this in any designated MPA it will be necessary to have scope for site expansion or variation. This could, for instance, take the form of an increase or consolidation of production in one or more sites,

whilst corresponding site capacity in other sites in that area could be reduced so as to maintain the same overall 'footprint'.

The social benefits of the finfish aquaculture sector have not been taken into consideration in the socio-economic assessment. The number of well-paid jobs provided in remote and rural locations has a significant effect on both the rural economy and the social sustainability of these areas. If the proposed MPAs restrict the areas available for future development, this could have significant effects.

Displacement:

In the Strategic Environmental Assessment Report (August 2013) the issue of displacement of aquaculture sites is detailed (page 59). A clarification is required since the final sentence details *"There is no policy to review existing consents."* The consents which this statement applies to are not detailed. It could be viewed that the consents in question relate to planning permission, CAR licence, Crown Estate lease and business authorisation. However, it is not clear that Marine Scotland would have the competence to review these consents either in future MPAs or outwith MPAs.