

Programme: 100m LNG Dual-fueled Ro-Ro Passenger Ferry

Programme Director: [redacted]

Review Period: May 2021

<u>Name</u>	<u>Job Title</u>	<u>Signature</u>
[redacted]	Programme Director	
[redacted]	Project Accountant	
[redacted]	Planning and Controls Manager	



1. Health & Safety

Report Number: 01	Date: 07.05.21
Month: Apr 21	

1. Monthly Cumulative Safety Statistics

S/#	Title	This Month Figures	Cumulative
01	RIDDORS	0	0
02	Fatality Case (Fatal)	0	0
03	Lost Working day Case (LWC)	0	0
04	Medical Treatment Case (MTC)	1	1
05	First Aid Case (FAC)	14	14
06	Property Damage (PD)	0	0
07	Near Miss (NM)	0	0
08	Fire Incident (FI)	0	0
09	Environmental Incident	0	0
10	Total Number of Recordable Injuries	0	0
11	Total Number of Days Lost	0	0

TREND ANALYSIS - Currently under development, to be supplied for May [report](#)

Note: Cumulative data reset to zero this month in line with FMPG reporting schedule

2. Description of Incident/Accident and Near Miss Reported This Month

Events (NM/MT/FA/PD ETC...)

1. RIDDOR. No incidents Reported
2. Medical treatments 1 incident – Rib injury sustained within Engine room on 805.
3. First Aid – 14 incidents – 2 cut heads, 7 debris in eye, 1 cut finger, 1 cut hand, 1 arm injury, 1 foot injury, 1 leg injury.
4. Fire incident – Nothing reported.
27/7 fire watch patrols being maintained.
5. Environmental incident – no environmental incidents occurred in month of April.
6. Near Miss – None reported

Learnings from previous events

- Electric shock – Jan – occurred during bulb replacement due to unseen breakdown in cable protection – Whilst all normal precautions had been taken, limited experience of building condition (Greenock warehouse), meant electrician not aware fault existed.
- Slipping incidents – Feb – Slipping incidents – both occurred on vessel access walkways due to inclement weather. Additional gripper tape applied to fix.
- Head injuries - March – In both cases scaffolders helmets fell off during low level task due to lack of situational awareness – retrofit chin straps provided to all scaffolders and available to others working at height.

3. HSE Activities

Description	This Month	
Site Safety Inspection	3	<ul style="list-style-type: none"> • 801 & 805 Walks include SMT member, Sub-contractor and or Union Representative. • Continue to review the current site COVID-19 controls. • Regular walk throughs conducted to monitor progress on implementation of all H&S relevant controls, prior to commencement of Alu welding within the main shed.
Policy/Paperwork Reviews	1	<ul style="list-style-type: none"> • Permit to Work involvement into Integrated Safe System of Work using Worksafe software – on site assessment to confirm a good fit with our needs, arranged for mid-May <u>May</u>. • Upcoming site lifts now flagged as part of planning reviews, requiring a Permit to Work for each lift. Further work required to embed basic lifting controls. • H&S Induction updated to include reference to Aluminium welding controls. • PPE Policy updated to include additional PPE requirements for Alu welding within the main shed. • Confined Space controls fully tested as part of aligning contractor with this procedure. Various improvements identified and implemented. • New Health & Safety Policy in preparation. • Dedicated Risk Assessment developed for Alu welding within main shed.

4. HSE Initiatives

Description
H&S dept continue to identify, change & improve current processes, procedures & safety culture throughout the yard.
Monthly Safety Committee continues with selected department attendees on a rotational basis.
H&S Director and Turnaround Director continue to meet bi-weekly to discuss progress and align on next steps.
Review of online Health & Safety training modules has confirmed a good standard of training, which will assist in improving general safety culture onsite. HSE & Training Managers have aligned on who should attend which training courses, going forward. NEBOSH training to be attended by Head of Ops direct reports (3 new recruits at this level have achieved this training in previous jobs)
Emergency Response Team training, including Confined Space Rescue & Rescue from height with support from Mines Rescue Safety Training continues. Approx. 75% of the team have received this refresher training. Marine Safety Training (capability to rescue someone from the water) booked for 6 members of the ERT
Action to develop an accurate Accident Frequency Rate remains open
Process to source a suitable permanent candidate, for the role of Head of HSE, continues with potential candidate interviews underway. Recruitment also initiated for HSE Advisor role. Trainee HSE Advisor, confirmed in role, as of 1 st April. Individual handed over their Permit Co-ordination duties to a replacement, from 1 st May, who has transferred from an operational role in the yard.
Whilst not a direct report, a new role of Lifting & Rigging Manager (to take responsibility for all lifting activity in the yard and on vessels) has been agreed. Recruitment underway.
The design and vendor for combined HSE/HR & Union Information boards has been finalised and are planned to be installed across the site during May. Intention is to improve the quality and presentation of the information, with controls to ensure it is regularly updated.
We are starting to see evidence of a positive impact of recent new hires into the business. Specifically: Training, Pipe-bag Manufacturing and Facilities Managers. This is relevant as they are generally bringing a more professional approach and personal attention to improving H&S safety in their areas of responsibility.
Preparations are in hand to ensure that the planned start of Foreign workers late May, are effectively introduced to the site, particularly in relation to following Covid controls.

2. Contract Summary

Customer	Scottish Ministers	Contract Start	Contract Effective Date - 1st April 2020
Agreed Contract value	£110.3M	Contract Finish	801 April 2022 – 802 Dec 2022
Project Type	Design and Build	Forecast Finish	801 April 2022 – 802 Dec 2022
Project Director	[redacted]	Contract Type	Fixed Price

Project Scope	Design, build and commission 2 off LNG dual fuel ferries, including training and provision of spares and handbooks. The scope of this project is to complete the design and build etc. from the date of 16 th August 2019, being the date of Administration of FMEL
Significant Project Changes	None (in this phase).
Acceptance Criteria	As per the specification.
Payment Terms	Monthly payment application for Actual costs incurred in previous calendar month
Warranty	The warranty for both vessels is 12 months from delivery. No allowance has been made financially for either shipyard support or suppliers' warranties that have lapsed during this period.
Liquidated Damages	No allowance has been made for late delivery. Performance penalty for weight – the maximum allowance of £250k per vessel has been included, if the allowance is exceeded the buyer has a contractual right to terminate. Performance penalty for speed - the maximum allowance of £150k per vessel has been included, if the allowance is exceeded the buyer has a contractual right to terminate. Performance penalty for fuel consumption – no allowance has been made.
Special Conditions	

3. Business Success Criteria

Success Criteria	Due	Owner	Enabler	Status	TL	Fut Tr
Health & Safety	Through the project	[redacted]	<ul style="list-style-type: none"> Formal Gap Analysis completed Dec 2020), to de-risk business, through introduction of appropriate safety controls and arrangements. This should provide the basis for a recognised management system 	<ul style="list-style-type: none"> Progress against identified shortfalls is reviewed bi-weekly with Turnaround Director and every 2nd month with Board. 	A	↔
Quality: right first time, dimensional control, care and maintenance	Through the project	[redacted]	<ul style="list-style-type: none"> Appointment of Compliance manager to integrate QC team with planned activity and support Operational teams Calling notice and reporting protocols establish Patrol and monitoring surveillance PotD 	<ul style="list-style-type: none"> Progressive acceptance of Legacy mechanical system installations signed off by all stakeholders 801 structural completion surveys supporting operations Preservation and reactivation activity ongoing Client site team/Class survey or weekly washup meetings implemented 	G	↔
Work packages are issued with associated information and materials	June 20	[redacted]	<ul style="list-style-type: none"> Inventory is loaded into the stores management module on Factory Master. Inventory can be coded to align with P6 plan 	<ul style="list-style-type: none"> Work packages for fabrication, hotwork and pipe manufacture are now being issued with material identified. A diary programme has been issued and will be used to manage the detailed workpack progress. 	A	↑
Commissioning & Sea trials		[redacted]	<ul style="list-style-type: none"> Integration with build Resource Test forms Ability to source LNG sea trials crew 	<ul style="list-style-type: none"> Plan is being updated to include commissioning activities One new member of staff now embedded in the team Test forms have been started 	G	↔
Technical information is produced on time and change is minimised	Through the project	[redacted]	<ul style="list-style-type: none"> Holds are cleared prior to required release of AFC2 issue drawings Legacy drawings identified prior to planned requirements, checked, issued and material requisitioned. Scope of work to complete understood and planned Document Control in place to facilitate access to the correct drawings Minimise change by confirming basic design is compliant 	<ul style="list-style-type: none"> Lists of legacy drawings identified and being checked Ship surveys may be required for additional areas. Numerous actions outstanding from structural completion survey. Document Control being established in sharepoint – in delay due to workload associated with structural completion and 805 	A	↔
Control of change is a properly managed process		[redacted]	<ul style="list-style-type: none"> An overall change process is in operation. A detailed process for stop work to be implemented across the business. 	<ul style="list-style-type: none"> An overall change process has been operating for some months, however there is now a level of change appearing from the [redacted] field engineering team requiring stop works. The detailed process for managing this is being finalised 	A	↔
Customer relationship is positively maintained throughout the project	Through the project	[redacted]	<ul style="list-style-type: none"> Regular dialogue at all levels, monthly reviews, ad hoc meetings 	<ul style="list-style-type: none"> Model reviews are now complete and the focus is now on the resolution of issues at the ship. There are currently no relationship issues and we continue to work collaboratively with CMAL in their new SG role. 	G	↔
Subcontractors are effectively integrated within the programme		[redacted]	<ul style="list-style-type: none"> POTD, weekly and monthly reviews Fortnightly HSE review 	<ul style="list-style-type: none"> Subcontractors have been kept involved in rebaseline activity Subcontractor plans are aligned to ours 	G	↔
The project is properly resourced with: <ul style="list-style-type: none"> Production management & supervision Production labour 	April 20	[redacted]	<ul style="list-style-type: none"> Accurate resource forecasting from the schedule and a resource strategy in place 	<ul style="list-style-type: none"> Labour from [redacted] has now started on site. This will build up over the coming weeks to achieve the overall resource requirement 	A	↑

4. SOFT Report

Successes	Opportunities
<ul style="list-style-type: none"> • Structural completion was achieved on target • Insulation has commenced on 5 deck and will progress onto upper decks • [redacted] labour has mobilised onsite with the first 15 people. COVID isolation rules have been fully followed. • The Insulation public procurement has been concluded with standstill letters ready to issue. • 802 outfit steel packages are currently in manufacture. 	<ul style="list-style-type: none"> • Improved dimensional control using 3D technology. Initial implementation on 802 units 82/83/84 and then future units/structure. • Build strategy review for 802 to build as blocks for wheelhouse and bow units prior to erection at ship • Automated welding to recommence on steel and aluminum work
Failures	Threats
<ul style="list-style-type: none"> • Agency labour continues to be an issue. Available labour has been focused on 801 production in the manufacturing shop and the ship. A resourcing solution has been agreed with [redacted] to be contracted to provide labour. The first group of 15 people start week commencing 24th May. • The impact of the suspension of production work, labour shortfall and the extension to the 801 drydock will require a review of the 801/802 programmes. With the resourcing solution agreed the programmes are being finalised for issue to SG on 31st May. • The technical proposal for 801 hull paint repair has not been agreed with CMAL. A way forward has been agreed and a dry dock specification has been issued for agreement • Axilocks. Whilst we have cleared legacy issues in zone 2 and 3 with customer agreement there are new issues arising concerning use in accordance with Lloyds. [redacted] has been raised with [redacted] following our discovery that the wrong type of axilocks had been called up and that axilocks were being used in unacceptable spaces and on unacceptable systems. These errors have now been scoped out and where required remedial work is ongoing. The required changes are currently under review. 	<ul style="list-style-type: none"> • COVID 19 impact to programme– Further issues/restrictions remain a threat to the programme. As we move into Level 2 this risk is diminishing. • Weight report – full review of the report is currently underway using [redacted] generated data and validating [redacted] data where possible. This may have a weight growth risk. Meeting to review with CMAL on 27th May • Cryodiffusion delay in getting Express Pipework on contract may impact LNG pipe installation programme. Manufacturing has commenced however the first delivery has slipped to early July delivery. This is being reviewed • Equipment information loaded on [redacted] does not align to the [redacted] equipment list. A full inventory is underway, circa 50% have been aligned to the equipment list. The physical checking will commence week beginning 24th May. • Over 106 penetrations have been identified as not conforming to Lloyds requirements, these will need to have corrective action with additional compensation. Zone 2 has been reviewed by Lloyds and currently 16 penetrations require rerouting of the services, impact is being assessed.
Impact Statement / Help Needed	

6. Traffic Light Report

Criteria	Overall Status				Future Trend	Comments	Return to Green	
	Jan 21	Feb 21	Mar 21	Apr 21			Date	Status
Overall Status	R	R	R	R	↔	<ul style="list-style-type: none"> The revised Quarterly Look Ahead, QLA, for Q1 was agreed in December. This has been impacted by the COVID suspension of work and a continuing shortfall in subcontract labour. Available labour is being focused onto 801. A full return to work commenced on 8th Feb. A rebaseline exercise has been completed, a resource plan has been produced and agreed and the plan can now be finalised. 	May	G
Safety	A	A	A	A	↑	<ul style="list-style-type: none"> Additional H&S resources (2 x H&S Advisors) being recruited, with a trainee having now started. Their role is to provide support to further improve H&S on vessels under construction and across the yard. Priority H&S actions continue to receive attention. 	TBA	G
Quality	A	A	A	G	↑	<ul style="list-style-type: none"> Quality Progresses to Green and follows the natural progression of understanding the quality issues and route to closure, Legacy pipework quality controls delivering repeatable results with Client progressive sign off now established. QC to support for weekend working established 801 and 802 reactivation activities continuing with successful results. Formal [redacted] survey received, [redacted] scheduled onsite form 1st June Care and preventive Maintenance steering group set up between Quality/Commissioning/Operations/Facilities Dimensional control surveys with Specialist contractor underway. Double curvature plate arrived onsite Weight control process underway and calibrated verification of Funnel and aft mast witnessed by client 	Mar	G
Customer Relationship	G	G	G	G	↔			
Schedule	R	R	R	R	↔	<ul style="list-style-type: none"> The revised Quarterly Look Ahead, QLA, for Q1 was agreed in December. This has been impacted by the COVID suspension of work and a continuing shortfall in subcontract labour. Available labour is being focused onto 801. A full return to work commenced on 8th Feb. A rebaseline exercise has been completed, a resource plan has been produced and agreed and the plan can now be finalised 	May	G
Finance	G	G	G	G	↔	<ul style="list-style-type: none"> The re-baseline has maintained the previous forecast at completion. There is an increasing amount of hours unspent which reflects the lack of labour. An updated financial project is currently being prepared 		
Technical	A	A	A	A	↑	<ul style="list-style-type: none"> LR / MCA approvals is ongoing Design verification completed; many issues found, typically poor documentation. Stability calculations are progressing as per the NA team plan. 	May	A
Suppliers	G	G	G	G	↔	<ul style="list-style-type: none"> Pipe Installation and 801/802 Hydraulics tenders now at award. Structural Insulation evaluation complete. 		
Resources	R	R	R	A	↔	<ul style="list-style-type: none"> An initial 15 people from [redacted] have started on 24th May and this will build up weekly to approx. 90 people. 	June	G
Risk	R	R	R	R	↔	<ul style="list-style-type: none"> The status remains red as the labour risk is impacting the programme. The COVID risk has also impacted with the suspension of production occurring in January. 	May	G

5. Quality

Dimensional Control & Survey

Lessons learned from previous interface between 76/79/82, , this will result in best fit of remaining aft end units after dimensional control survey's scheduled for units 83&84. Survey 3DI will carry out dimensional control on units currently underway 73 and 74.

Capex requisitions has been raised and Leica total station 10 and associated equipment will be delivery to allow our new surveyor to begin surveying and building up a picture of our units with valuable pre and post weld dimensions. This will be fed back to design for future shrinkage allowance and better dimensional control.

MCA are booked for a site visit to reintroduce them to the yard with and demonstrate our successful covid policy. Areas requiring a visit and clarification from MCA are the insulation of the aluminum superstructure A60 insulation

People:

[redacted]

Operations:

Ship 802 hull automation has started again, this will reintroduce a higher level of quality and aesthetic look to the external hull.

Mechanical systems in zones 2&3 continuing with the installation of layer 7-10. ^[redac] are progressing with test packs for pressure testing.

PROJECT No.: 801
Lifting Load Testing Sheet

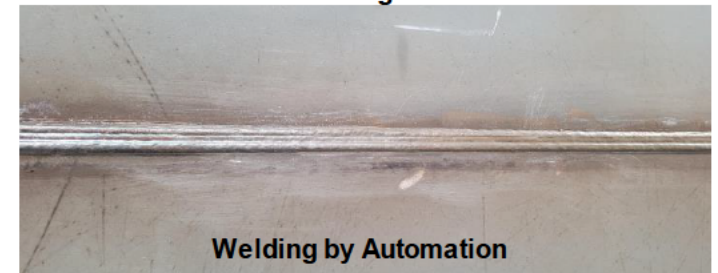


Proof of load test carried out on forward casing 0762 Port Side.

Calibration weight check

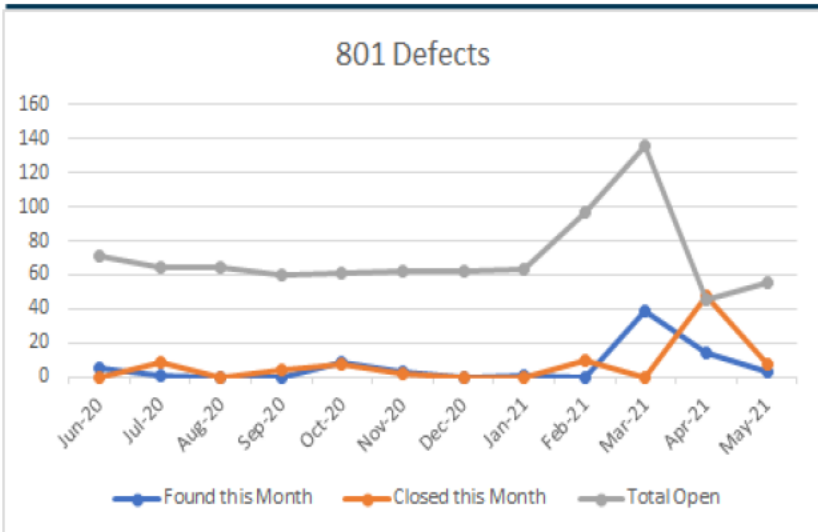


Unit 48 Jig

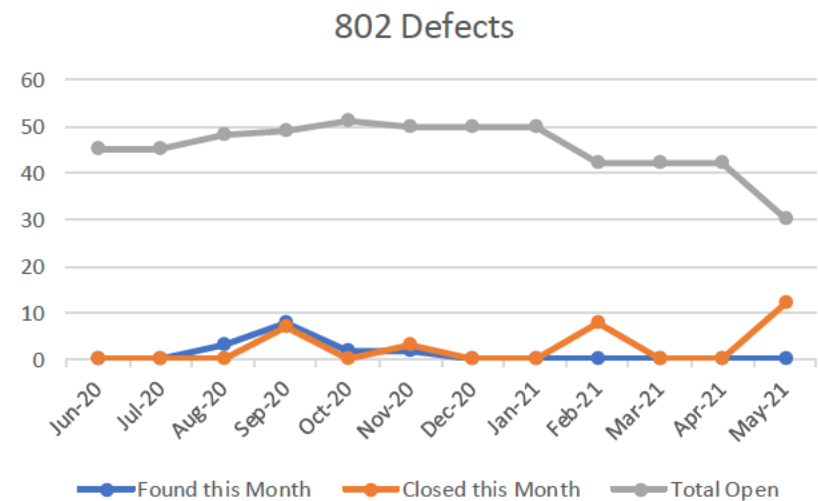


Welding by Automation

5. Quality 801 & 802



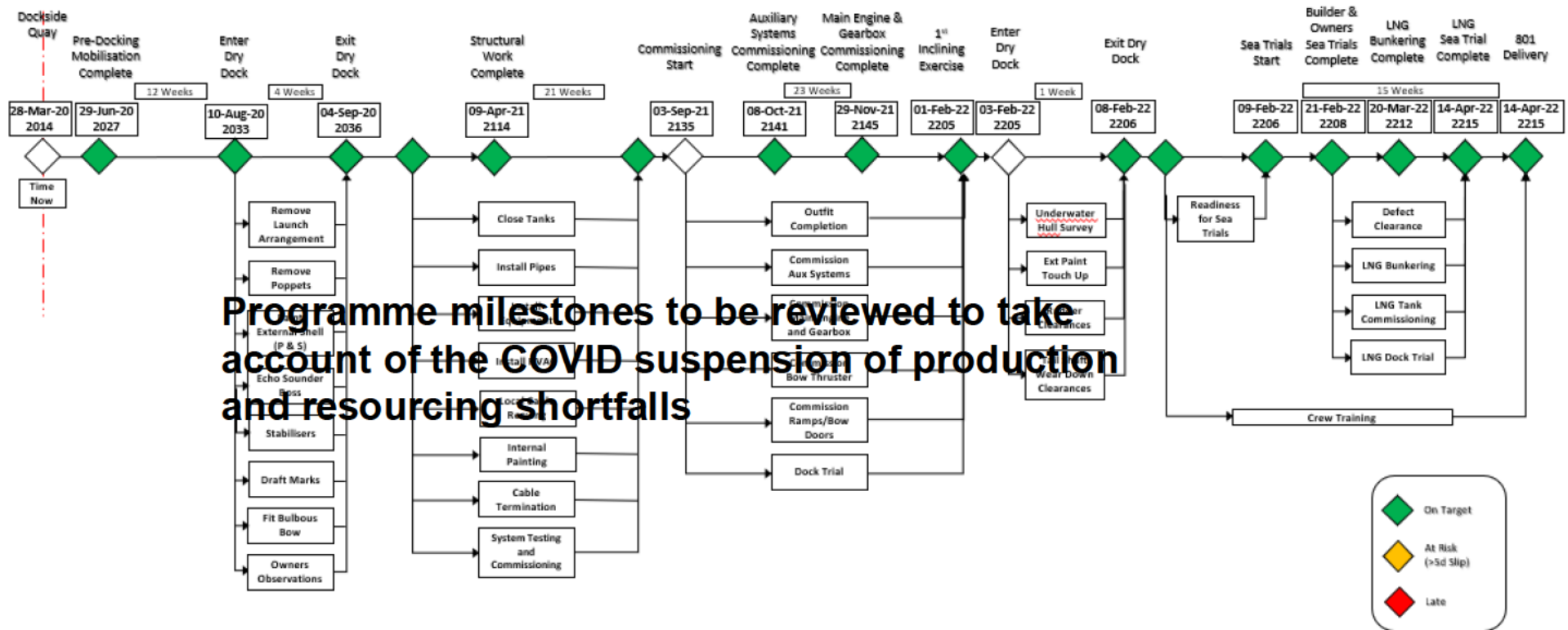
This month's report shows 3 new defects open from last month on 801 which are all covering ultrasonic testing surveys, 7 were closed out covering mechanical/piping dry survey comments & care & protection. There has been 0 new defects opened on 802 although 12 have been closed out covering care & protection mainly water ingress and de-rusting of areas. Defects are still continuously sent every Monday to ensure complete visibility of those remaining open and would encourage these to be worked through to reduce numbers.



801 recesses have been complete 80 off with 17 remaining, funnels & mast have been surveyed throughout to ensure compliance. Aft end extensions are being surveyed ensuring welds are complete with fabrication ongoing currently. Inserts on various parts of ship have been MPI carried out also volumetrics for welders' qualifications to ensure our team are authorized to carry out tasks onboard.

802 we have been working alongside welding dept to begin preparing linkups bringing them back to weldable standard carrying out pre-fit up checks. Unit 84 is being surveyed throughout in top shed carrying out NDE as progress moves on, unit 75 deck panel has been passed by Lloyds and CMAL.

8. 801 Schedule Overview as @ Baseline Position (Aug 2020)

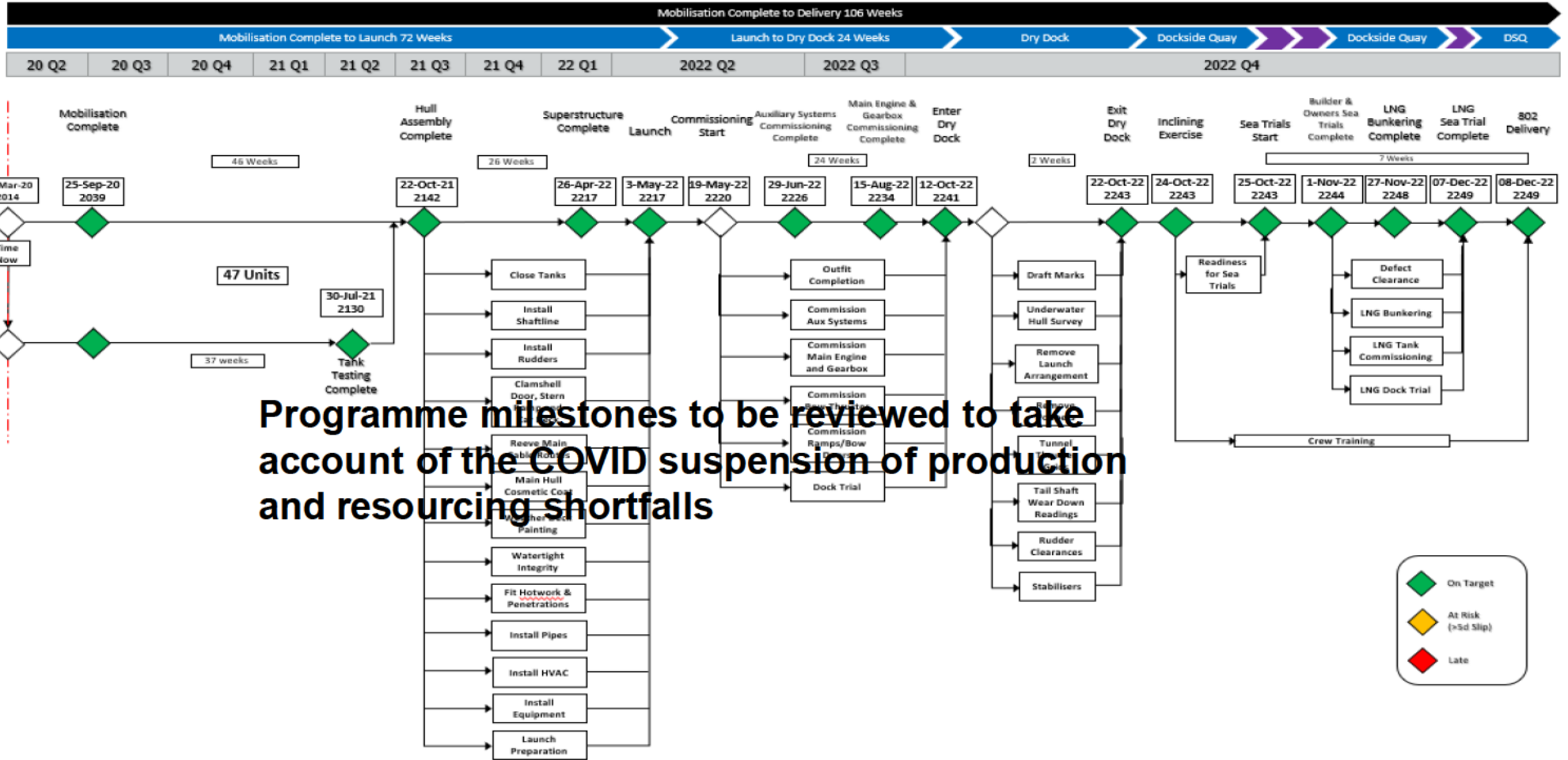


Programme milestones to be reviewed to take account of the COVID suspension of production and resourcing shortfalls

CDP has 3 weeks time contingency included compared to our Driving Project Plan

9. 802 Schedule Overview as @ Baseline Position (Aug 2020)

802 Timeline to Delivery



Programme milestones to be reviewed to take account of the COVID suspension of production and resourcing shortfalls

9. CMAL/Transport Scotland Milestones

801/802 Milestones

801				2020 Q4		2021 Q1			2021 Q2			2021 Q3			2021 Q4			2022 Q1			2022 Q2			2022 Q3			2022 Q4					
Description	Month	Year	Qtr	SEP	OCT	NOV	DEC	JAN	FEB	MAR	APR	MAY	JUN	JUL	AUG	SEP	OCT	NOV	DEC	JAN	FEB	MAR	APR	MAY	JUN	JUL	AUG	SEP	OCT	NOV	DEC	
Zone 02 AFC Drawing Issue Complete	October	2020	Q3		◆																											
Electrical Contract Awarded	November	2020	Q4			◆																										
Z11 Production Outputs Complete	December	2020	Q4				◆																									
Start Engine Room Hotwork	January	2021	Q1					◆																								
Completion of car deck recesses	February	2021	Q1						◆																							
complete instal pipework in sub zone 0303	March	2021	Q1							◆																						
Structural Work Complete	April	2021	Q1								◆																					
commence installation in zone 9	May	2021	Q2									◆																				
Completion of Wheelhouse Windows	June	2021	Q2										◆																			
All Pipework Installed [210]	July	2021	Q3											◆																		
Commission Auxiliary Systems Start	August	2021	Q3												◆																	
Auxiliary Systems Commissioning Complete	October	2021	Q3													◆																
Z11 Wheelhouse all electrical equipment installed	September	2021	Q3														◆															
Main Engine & Gearbox Commissioning Start	October	2021	Q4															◆														
Main Engine & Gearbox Commissioning Complete	November	2021	Q4																◆													
All Checkwire complete	December	2021	Q4																	◆												
Sea Trials Start	February	2022	Q1																		◆											
Builders & Owners Sea Trials Complete	February	2022	Q1																			◆										
LNG Tanking Complete	March	2022	Q1																				◆									
LNG Sea Trial Complete	April	2022	Q1																					◆								
801 Delivery (contract milestone)	April	2022	Q1																						◆							

Programme milestones to be reviewed to take account of the COVID suspension of production and resourcing shortfalls

802				2020 Q4		2021 Q1			2021 Q2			2021 Q3			2021 Q4			2022 Q1			2022 Q2			2022 Q3			2022 Q4						
Description	Month	Year	Qtr	SEP	OCT	NOV	DEC	JAN	FEB	MAR	APR	MAY	JUN	JUL	AUG	SEP	OCT	NOV	DEC	JAN	FEB	MAR	APR	MAY	JUN	JUL	AUG	SEP	OCT	NOV	DEC		
Commence Preparation Unit 3/5	October	2020	Q3		◆																												
Complete preparation unit 3/5	November	2020	Q4			◆																											
Erect Unit 02 at Berth	November	2020	Q4				◆																										
Complete preparation for unit 48	December	2020	Q4					◆																									
Commence Tank Testing	January	2021	Q1						◆																								
Commence Zone 2 Pipework Manufacturing	February	2021	Q1							◆																							
Commence Zonal Hotwork Programme - Zone 2	March	2021	Q1								◆																						
Commence Zone 2 Pipework Installation	April	2021	Q2									◆																					
Complete Preparation of the Funnel	May	2021	Q2										◆																				
Completion of Cryogenic Pipework - Zone 2	June	2021	Q2											◆																			
Shellline - Final Line of Sight	July	2021	Q3												◆																		
Erect Fore'side Block at Berth (J49/U50/U51)	August	2021	Q3													◆																	
Complete Pre-Fixing Out (PFO) Zone 2	September	2021	Q3														◆																
Hull Assembly Complete (contract milestone - berths job up completed)	October	2021	Q4															◆															
	November	2021	Q4																◆														
	December	2021	Q4																	◆													
Milestones for the period after October 21 will be agreed 3 months prior to the date. CDP milestones are included through to delivery	January	2022	Q1																		◆												
	February	2022	Q1																			◆											
	March	2022	Q1																				◆										
	April	2022	Q2																					◆									
Superstructure Complete (contract milestone - 100% fabrication of hull and superstructure)	May	2022	Q2																						◆								
Launch (contract milestone - launch and hull inspection and acceptance prior to paint completion)	May	2022	Q2																							◆							
Commissioning Start	May	2022	Q2																									◆					
Commissioning of Auxiliary Systems Complete	June	2022	Q2																										◆				
	July	2022	Q2																											◆			
	August	2022	Q3																												◆		
Main Engine and Gearbox Commissioning Complete	September	2022	Q3																													◆	
	October	2022	Q4																													◆	
Commence Sea Trials	October	2022	Q4																														◆
Builder & Owners Sea Trials Complete	November	2022	Q4																														◆
LNG Sea Trial Complete	December	2022	Q4																														◆
802 Delivery (contract milestone)	December	2022	Q4																														◆

9. CMAL/Transport Scotland Milestones – status to end 2020

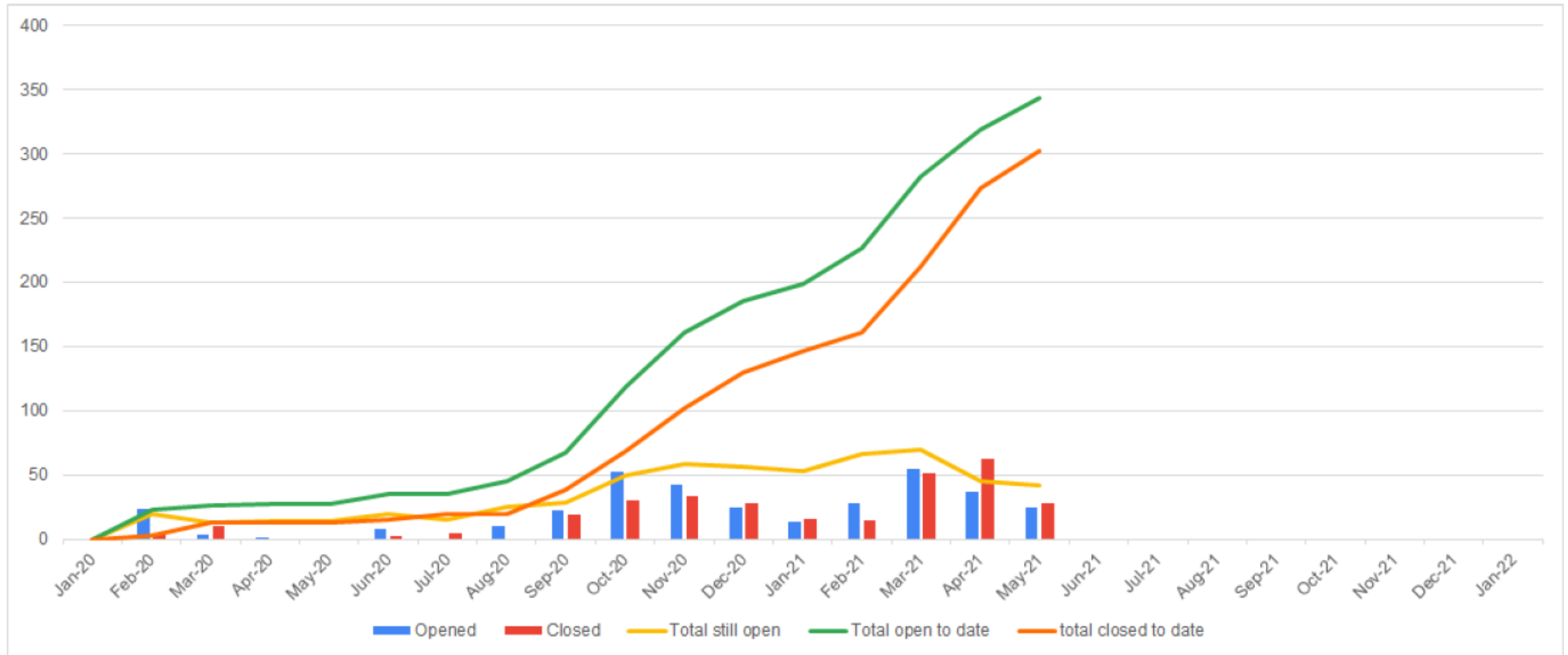
801/802 Milestones - Q4 2020 and Q1 2021

801				2020 Q3	2020 Q4			2021 Q1			Status
Description	Month	Year	Qtr	SEP	OCT	NOV	DEC	JAN	FEB	MAR	
Zone 02 AFC Drawing Issue Complete	October	2020	Q3		◆						Complete
Electrical Contract Awarded	November	2020	Q4			◆					Complete
Z11 Production Outputs Complete	Decemeber	2020	Q4				◆				Complete
Start Engine Room Hotwork	January	2021	Q1					◆			
Completion of car deck recesses	February	2021	Q1						◆		
complete install pipework in sub zone 0303	March	2021	Q1							◆	

Programme milestones to be reviewed to take account of the COVID suspension of production and resourcing shortfalls

802				2020 Q3	2020 Q4			2021 Q1			Status
Description	Month	Year	Qtr	SEP	OCT	NOV	DEC	JAN	FEB	MAR	
Commence Preparation Unit 3/5	October	2020	Q3		◆						Complete
Complete preparation unit 3/5	November	2020	Q4			◆					Complete
Erect Unit 82 at Berth	November	2020	Q4			◆					Outstanding - delayed for new dimensional survey and painting. Unit will be erected with minimal rework
Complete preparation for unit 48	December	2020	Q4				◆				Unit steelwork has been inspected and scrapped (with the exception of the bulbous bow) Steel will be provided by centralstaal. This will be reforecast
Commence Tank Testing	January	2021	Q1					◆			
Commence Zone 2 Pipework Manufacturing	February	2021	Q1						◆		
Commence Zonal Hotwork Programme - Zone 2	March	2021	Q1							◆	

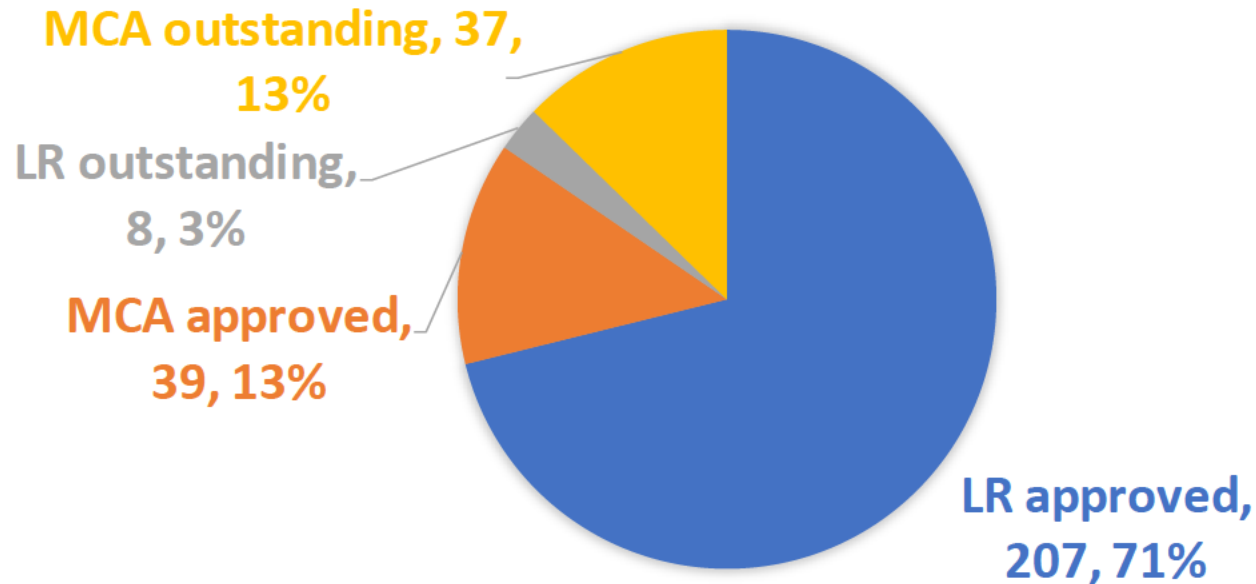
Engineering – TQ Status



16. Weight

- Detailed weight review planned with CMAL for Thursday 27th May.
- Currently forecasting 22.5 tonnes overweight, however, during the validation exercise we have identified contingency weights added by the previous NA team which can be reduced as we become certain that all weight is captured.
- Key fabrications and equipments are being weighed as part of the lifting activities.
- Smaller assemblies and equipment will be sample weighed to compare to the model and increase confidence.
- We recognise that many seats appear to be heavier than expected and we have requested an explanation from [redacted].

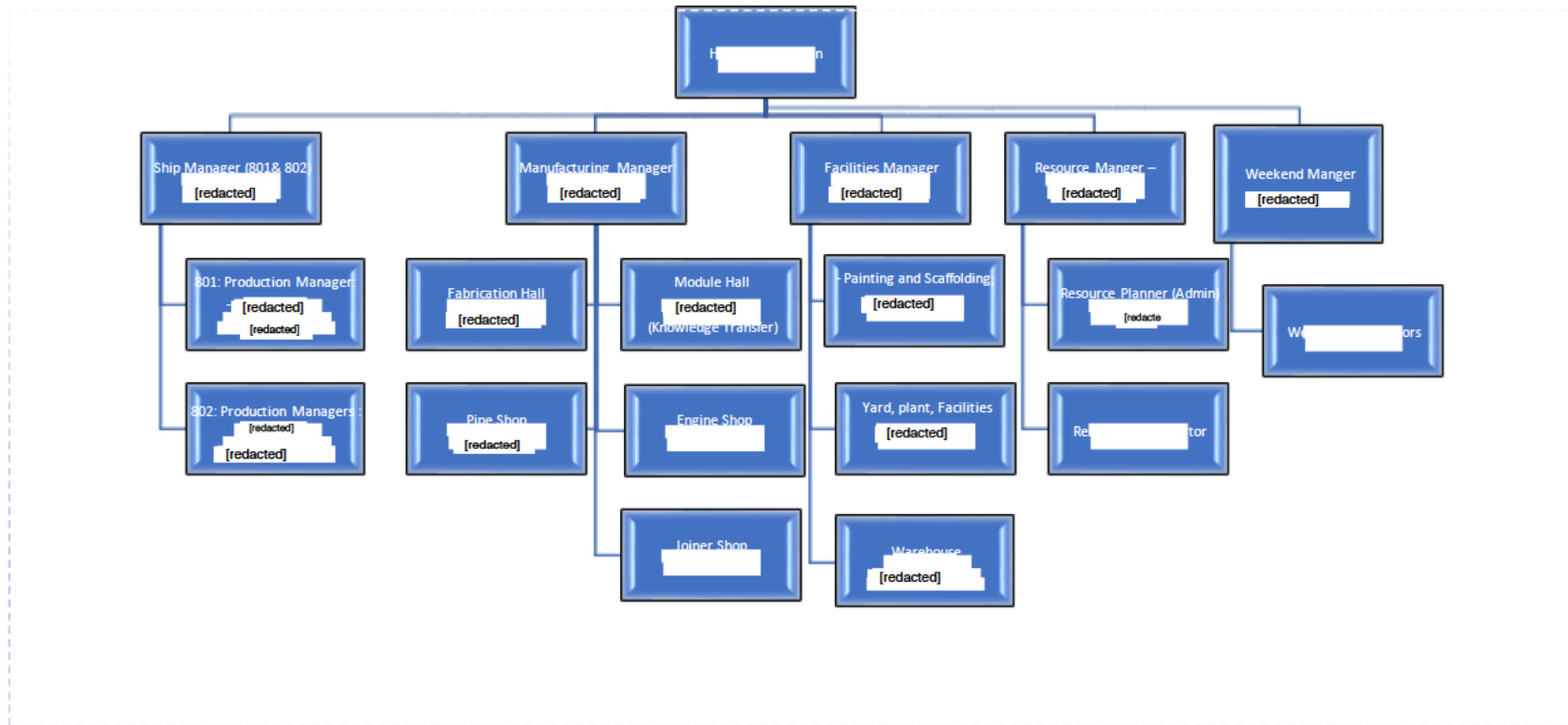
Engineering – Basic Design Status



30 electrical drawings previously approved by LR have been resubmitted following [redacted] updates. These are still counted in the 'LR approved' total. It is expected that these will be approved again without issue.

18 drawings counted as "MCA outstanding" were submitted to MCA at the end of April and we expect to have a response shortly.

Current Status: Organisation Chart



Successes	Opportunities
<p>Ship Build:</p> <ul style="list-style-type: none"> 801: Work Pack Diary rolled out & working well Pipe installation in week 19 Z3 hit target numbers Installation of walkways has started on planned date , keeping up with critical path activities. Aft Mast now fully welded <ul style="list-style-type: none"> 802: U82 weld & Fair work going well , preparing for the next 2 units on week 25 <p>Manufacturing:</p> <ul style="list-style-type: none"> Aluminium units well underway erecting – a 3/5 a 4/5 and a 5/5 Unit 75 complete and surveyed. Started to build unit 48 Jig for GMES Unit 94 sub assembly started <p>Facilities</p> <ul style="list-style-type: none"> Valves for 801 consolidated and updated on Factory Master. This has created more racking space. Created space for a kitting area to address work packs for pipe material. PG Stores have started count of all Buts, Bolts, Washers and Consumables. (Min/Max) <p>Resources</p> <ul style="list-style-type: none"> New induction process implemented successfully Re-Allocation of nightshift and 805 resources as per the priorities within the yard. 	<p>Ship Build:</p> <ul style="list-style-type: none"> LFE session on structural completion activities for 802. Possible opportunity to visit redacted to inspect CalMac Ferry for guidance on similar scopes (planned for Tue 25th May) Pressure testing of pipes to be brought forward in the plan for zone 2 & 3 Weekly walk with client to reduce owners' observations if jobs can be done in week. 802: Painting and blasting; <p>Manufacturing</p> <p>Remove redundant material from all Manufacturing.</p> <ul style="list-style-type: none"> Work pack process to be streamlined Complete Unit U73, 74 and 75 ahead of schedule Visualization boards up and PLOD started – functional attendance req Subcontract hull out fit seats for 801 and 802 to allow unit build. Aluminum scope change proposal <p>Facilities</p> <ul style="list-style-type: none"> Greenock Warehouse reconciliation All nut/bolt washer are in systems. Set Min/max. <ul style="list-style-type: none"> Review against the prod Specification Document Warehouse layout consolidation of all 801 & 802 materials. Pipe spools to be consolidated . Over 4 bays there is a spread of multiple systems . This will make the process more efficient and cut down time when we receive requests. <p>Resources</p> <ul style="list-style-type: none"> Allocation of redacted labour, 10 start Monday 24/05, 5 Start 25/05 Looking to rationalise shifts on the boats and manufacturing, this cannot happen until 1 metre distancing is implemented in amenities
Failures	Threats
<p>Ship Build</p> <ul style="list-style-type: none"> Unable to provide sub contractor make at ship closer material on time to enable critical spool fit; Trial of providing closer material to redacted between pipeshop & stores Max / Min levels still an issue that is preventing install of pipes in Zone 2 . All paint activities stopped on 801 in week due to resource being moved to 805 priorities. <p>Manufacturing:</p> <ul style="list-style-type: none"> No bar material for 802 on site. - actions raised. Working with procurement to resolve; 	<p>Ship Build</p> <ul style="list-style-type: none"> Manufactured parts still not given a location on factory master , could lead to lost parts and rework. Action plan in place to resolve; Specification & design of LNG system throughout the vessel could impact planned install or cause additional rework/ testing. Kick-off meeting held and action plan in place; <p>Manufacturing</p> <ul style="list-style-type: none"> Supervisor cover in the fab area/ currently only 2 off. <p>Facilities</p> <ul style="list-style-type: none"> Restructure Footprint of Port Glasgow - opportunity to go to 1M SD. <p>Resources</p> <ul style="list-style-type: none"> Attrition rate of resources on the weekend shift
<p style="text-align: center;">redacted</p> <p style="text-align: center;">The information contained in this document is the property of Ferguson Marine (Port Glasgow) , and further dissemination is prohibited without written permission of Ferguson Marine (Port Glasgow) .</p> <p style="text-align: center;">IN STRICT CONFIDENCE</p>	

[redacted]

Resource Table - 801

801 LookAhead Workforce - Planned vs Availability																				
Resource	WE 24.05.21					WE 01.06.21					WE 08.06.21					WE 15.06.21				
	Planned FTE (30hrs/Wk)	Mon - Thu Available	Weekend Available	Sub-contract Available	Var	Planned FTE (30hrs/Wk)	Mon - Thu Available	Weekend Available	Sub-contract Available	Var	Planned FTE (30hrs/Wk)	Mon - Thu Available	Weekend Available	Sub-contract Available	Var	Planned FTE (30hrs/Wk)	Mon - Thu Available	Weekend Available	Sub-contract Available	Var
Ancillary Worker	15.0	8.0	3.0	-	- 4	13.0	8.0	3.0	-	- 2	10.0	8.0	3.0	-	1	10.0	8.0	3.0	-	1
Clkr Burner	6.0	3.0	-	-	- 3	4.0	3.0	-	-	- 1	4.0	3.0	-	-	- 1	4.0	3.0	-	-	- 1
Engineer/Mech Fitter	7.0	11.0	-	-	4	8.0	11.0	-	-	3	9.0	11.0	-	-	2	9.0	11.0	-	-	2
Joiner	1.0	3.0	-	-	2	1.0	3.0	-	-	2	1.0	3.0	-	-	2	1.0	3.0	-	-	2
Painter	11.0	5.0	4.0	-	- 2	16.0	5.0	4.0	-	- 7	16.0	5.0	4.0	-	- 7	16.0	5.0	4.0	-	- 7
Pipe Fitter	19.0	11.0	11.0	-	3	15.0	11.0	11.0	-	7	13.0	11.0	11.0	-	9	13.0	11.0	11.0	-	9
Plater	13.0	11.0	6.0	-	4	9.0	11.0	6.0	5.0	8	6.0	11.0	6.0	5.0	16	6.0	11.0	5.0	5.0	15
Scaffolder	4.0	-	1.0	-	- 3	4.0	-	1.0	-	- 3	4.0	-	1.0	-	- 3	4.0	-	1.0	-	- 3
Shipwright	1.0	-	-	-	- 1	1.0	-	-	-	- 1	2.0	-	-	-	- 2	2.0	-	-	-	- 2
Welder	14.0	11.0	1.0	-	- 2	12.0	11.0	1.0	3.0	-	9.0	11.0	1.0	3.0	6	9.0	11.0	1.0	3.0	6
Grand Total	91.0	63.0	26.0	-	- 2	83.0	63.0	26.0	8.0	14	74.0	63.0	26.0	8.0	23	74.0	63.0	25.0	8.0	22

Note:

- Continue to work with recruitment agencies to meet demand;
- Operating a weekend shift to bring programme to the left; (retention concerns)
- Packages of work subcontracted out bring programme to the left;
- Resource reallocated from nightshift and 805 between 801 and 802

[redacted]

Resource Table - 802

802 LookAhead Workforce - Planned v Availability

Resource	WE 24.05.21					WE 01.06.21					WE 08.06.21					WE 15.06.21				
	Planned FTE (30hrs/Wk)	Mon - Thu Available	Weekend Available	Sub-contract Available	Var	Planned FTE (30hrs/Wk)	Mon - Thu Available	Weekend Available	Sub-contract Available	Var	Planned FTE (30hrs/Wk)	Mon - Thu Available	Weekend Available	Sub-contract Available	Var	Planned FTE (30hrs/Wk)	Mon - Thu Available	Weekend Available	Sub-contract Available	Var
Ancilliary Worker	9.0	11.0	-	-	2	9.0	11.0	-	-	2	9.0	11.0	-	-	2	9.0	11.0	-	-	2
Clkr Burner	5.0	1.0	-	-	4	9.0	1.0	-	-	8	5.0	1.0	-	-	4	5.0	1.0	-	-	4
Engineer/Mech Fitter	-	6.0	-	-	6	-	6.0	-	-	6	-	6.0	-	-	6	-	6.0	-	-	6
Joiner	2.0	4.0	-	-	2	2.0	4.0	-	-	2	2.0	4.0	-	-	2	2.0	4.0	-	-	2
Painter	7.0	12.0	-	-	5	6.0	12.0	-	-	6	6.0	12.0	-	-	6	6.0	12.0	-	-	6
Pipe Fitter	-	-	-	-	-	-	-	-	-	-	5.0	-	-	-	5	5.0	-	-	-	5
Plater	11.0	4.0	3.0	6.0	2	14.0	4.0	3.0	11.0	4	13.0	4.0	3.0	11.0	5	13.0	4.0	3.0	11.0	5
Scaffolder	3.0	1.0	1.0	-	1	3.0	1.0	1.0	-	1	3.0	1.0	1.0	-	1	3.0	1.0	1.0	-	1
Shipwright	3.0	2.0	-	-	1	5.0	2.0	-	-	3	5.0	2.0	-	-	3	5.0	2.0	-	-	3
Welder	16.0	4.0	1.0	3.0	8	19.0	4.0	1.0	5.0	9	25.0	4.0	1.0	5.0	15	25.0	4.0	1.0	5.0	15
Grand Total	56.0	45.0	5.0	9.0	3	67.0	45.0	5.0	16.0	1	73.0	45.0	5.0	16.0	7	73.0	45.0	5.0	16.0	7

Note:

- NCA agreement to bring a subcontract company onsite to work on manufacture of units & other packages.
- Resource reallocated from nightshift and 805 between 801 and 802

[redacted]

Resource Table - Manufacturing

Manufacturing LookAhead Workforce - Planned vs Availability

Resource	WE 24.05.21					WE 01.06.21					WE 08.06.21					WE 15.06.21					
	Planned FTE (30hrs/Wk)	Mon - Thu Available	Weekend Available	Sub-contract Available	Var	Planned FTE (30hrs/Wk)	Mon - Thu Available	Weekend Available	Sub-contract Available	Var	Planned FTE (30hrs/Wk)	Mon - Thu Available	Weekend Available	Sub-contract Available	Var	Planned FTE (30hrs/Wk)	Mon - Thu Available	Weekend Available	Sub-contract Available	Var	
Ancillary Worker	-	8.0	-	-	8	-	7.0	-	-	7	-	7.0	-	-	7	-	7.0	-	-	-	7
Clkr Burner	6.0	5.0	-	-	1	5.0	6.0	-	-	1	4.0	6.0	-	-	2	4.0	6.0	-	-	2	
Engineer/Mech Fitter	-	-	-	-	-	-	-	-	-	-	-	-	-	-	-	-	-	-	-	-	
Joiner	-	-	-	-	-	-	-	-	-	-	-	-	-	-	-	-	-	-	-	-	
Painter	-	-	-	-	-	-	-	-	-	-	-	-	-	-	-	-	-	-	-	-	
Pe Fitter	5.0	2.0	-	-	3	5.0	5.0	-	-	-	5.0	5.0	-	-	-	5.0	5.0	-	-	-	
Plater	25.0	14.0	-	4.0	7	23.0	10.0	-	-	13	22.0	10.0	-	-	12	22.0	10.0	-	-	12	
Scaffolder	-	-	-	-	-	-	-	-	-	-	-	-	-	-	-	-	-	-	-	-	
Shipwright	-	-	-	-	-	-	-	-	-	-	-	-	-	-	-	-	-	-	-	-	
Welder	14.0	16.0	-	2.0	4	12.0	16.0	-	-	4	13.0	16.0	-	-	3	13.0	16.0	-	-	3	
Grand Total	50.0	45.0	-	6.0	1	45.0	44.0	-	-	1	44.0	44.0	-	-	-	44.0	44.0	-	-	-	

Pipeshop Labour

Resource	WE 24.05.21					WE 01.06.21					WE 08.06.21					WE 15.06.21				
	Planned FTE (30hrs/Wk)	Mon - Thu Available	Weekend Available	Sub-contract Available	Var	Planned FTE (30hrs/Wk)	Mon - Thu Available	Weekend Available	Sub-contract Available	Var	Planned FTE (30hrs/Wk)	Mon - Thu Available	Weekend Available	Sub-contract Available	Var	Planned FTE (30hrs/Wk)	Mon - Thu Available	Weekend Available	Sub-contract Available	Var
Ancillary Worker	-	2.0	-	-	2	-	2.0	-	-	2	-	2.0	-	-	2	-	2.0	-	-	2
Clkr Burner	-	-	-	-	-	-	-	-	-	-	-	-	-	-	-	-	-	-	-	-
Engineer/Mech Fitter	-	-	-	-	-	-	-	-	-	-	-	-	-	-	-	-	-	-	-	-
Joiner	-	-	-	-	-	-	-	-	-	-	-	-	-	-	-	-	-	-	-	-
Painter	-	-	-	-	-	-	-	-	-	-	-	-	-	-	-	-	-	-	-	-
Pe Fitter	-	13.0	-	-	13	-	13.0	-	-	13	-	13.0	-	-	13	-	13.0	-	-	13
Plater	-	-	-	-	-	-	-	-	-	-	-	-	-	-	-	-	-	-	-	-
Scaffolder	-	-	-	-	-	-	-	-	-	-	-	-	-	-	-	-	-	-	-	-
Shipwright	-	-	-	-	-	-	-	-	-	-	-	-	-	-	-	-	-	-	-	-
Welder	-	5.0	-	-	5	-	5.0	-	-	5	-	5.0	-	-	5	-	5.0	-	-	5
Grand Total	-	20.0	-	-	20	-	20.0	-	-	20	-	20.0	-	-	20	-	20.0	-	-	20

Planning Status

General Status:

The programmes have now been rebaselined and will be signed of on 26th May for issue to SG on 31st May.

The workpack diary has now been issued for 801 and manufacturing and is being progressed.

Key Issues in month:

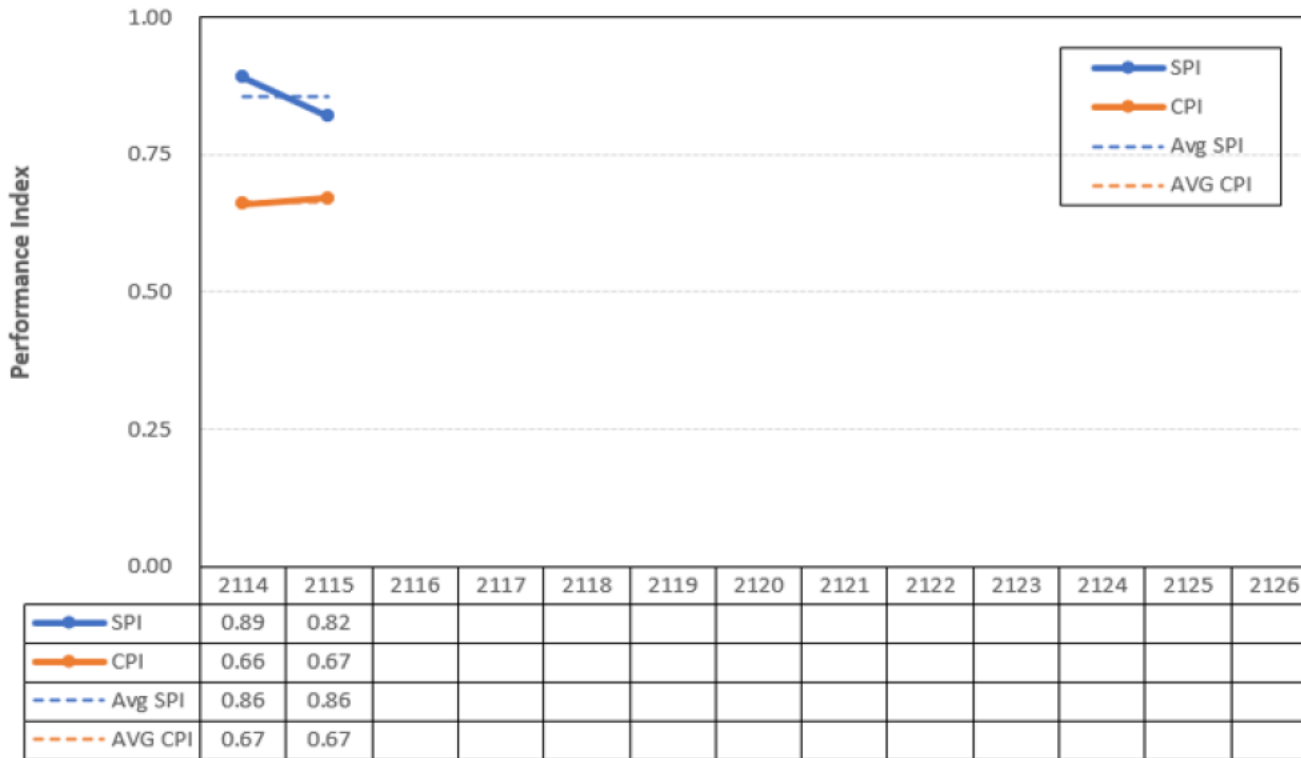
The 801 planning Manager will be leaving on 7th June, a replacement is being sought.

[redacted]

[redacted]

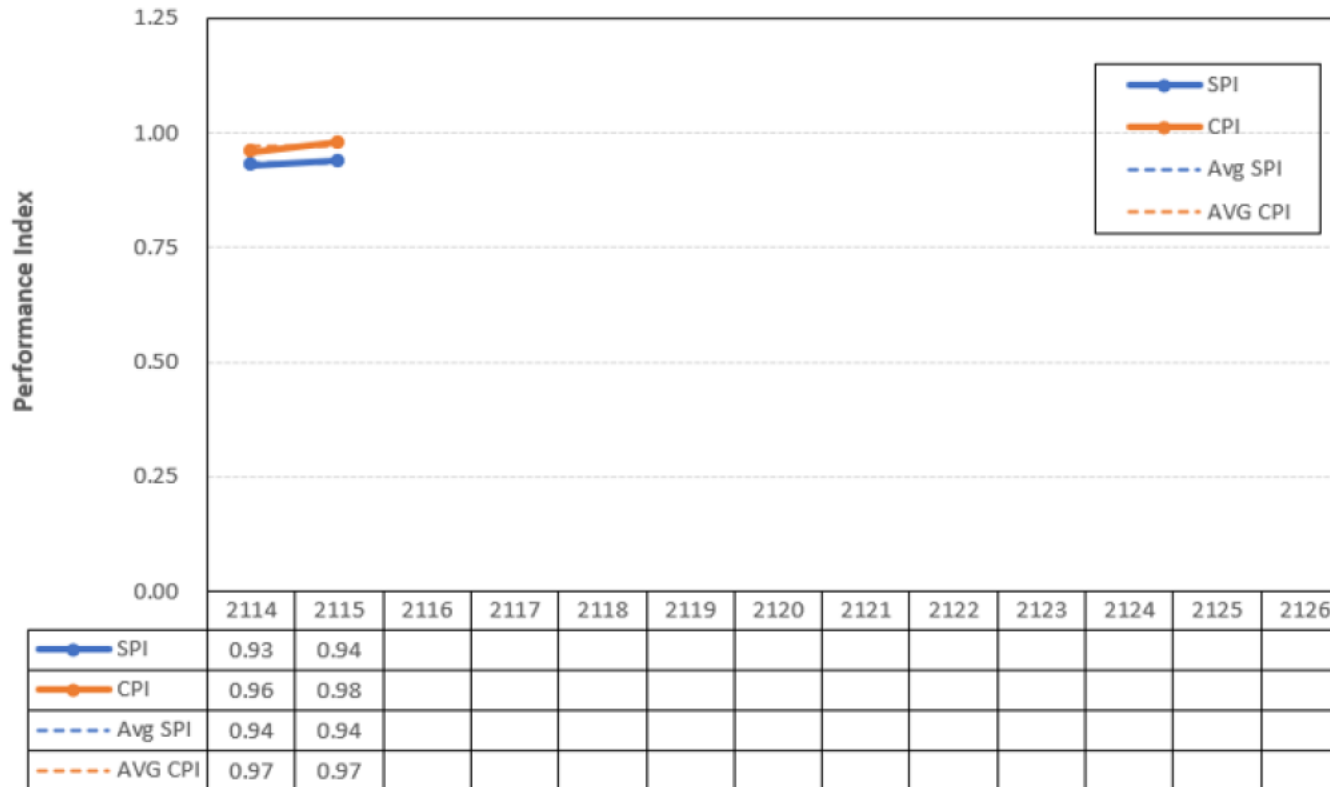
12. SPI & CPI Trends

801 CPI/SPI
2021 Q2 QLA



12. SPI & CPI Trends

802 CPI/SPI
2021 Q2 QLA

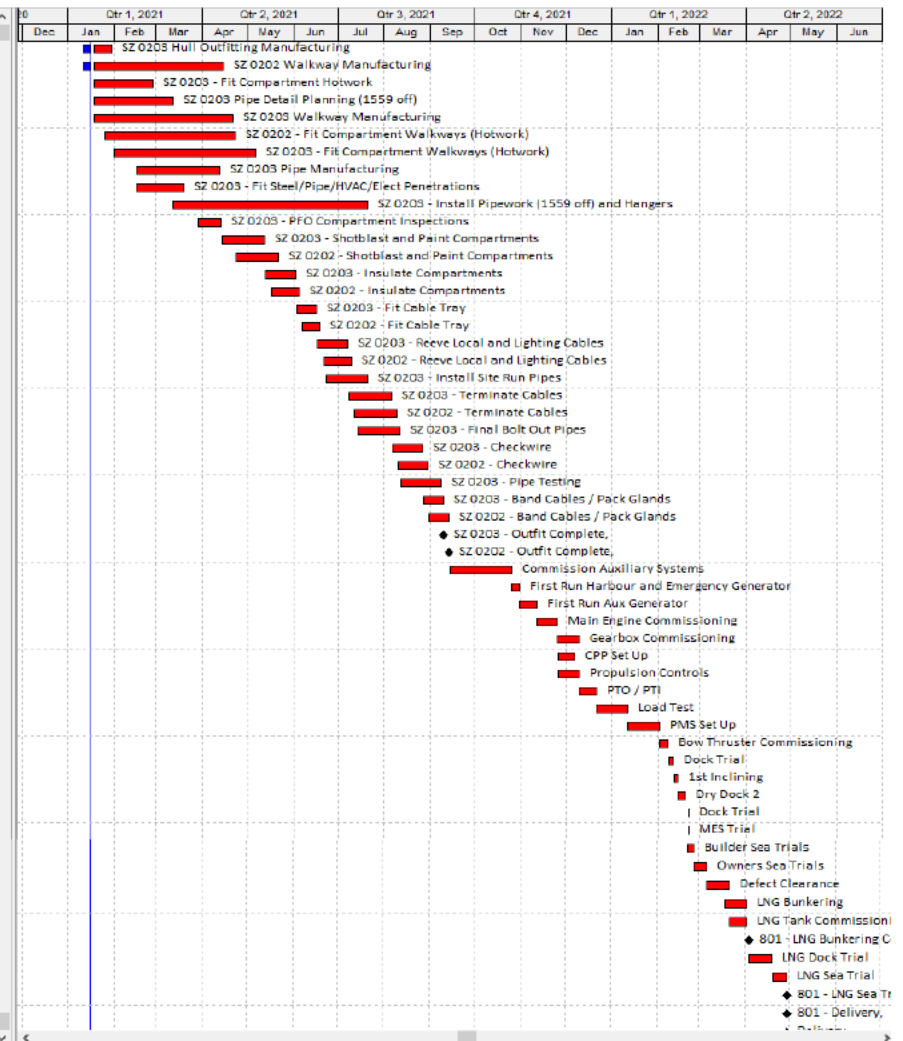


9c. Ship 801 Critical path

Activity ID	Activity Name	OD	RD	Start	Finish	BL Project Start	BL Project Finish	Total Float
801MANHO0203	SZ 0203 Hull Outfitting Manufacturing	30d	10d	11-Jan-21 A	29-Jan-21	11-Jan-21	19-Feb-21	-15d
801MANHO1111	SZ 0202 Walkway Manufacturing	66d	61d	11-Jan-21 A	14-Apr-21	11-Jan-21	14-Apr-21	-22d
801PS0203Hw01	SZ 0203 - Fit Compartment Hotwork	30d	30d	18-Jan-21*	26-Feb-21	18-Jan-21	26-Feb-21	-15d
801DPTW0203	SZ 0203 Pipe Detail Planning (1559 off)	40d	40d	18-Jan-21*	12-Mar-21	11-Jan-21	05-Mar-21	-19d
801MANHO1121	SZ 0203 Walkway Manufacturing	66d	66d	18-Jan-21*	21-Apr-21	11-Jan-21	14-Apr-21	-20d
801PS0202Hw4	SZ 0202 - Fit Compartment Walkways (Hotwork)	62d	62d	25-Jan-21*	22-Apr-21	25-Jan-21	22-Apr-21	-22d
801PS0203Hw4	SZ 0203 - Fit Compartment Walkways (Hotwork)	66d	66d	01-Feb-21	06-May-21	25-Jan-21	28-Apr-21	-20d
801MANPPO203	SZ 0203 Pipe Manufacturing	39d	39d	15-Feb-21	12-Apr-21	08-Feb-21	01-Apr-21	-19d
801PS0203Hw02	SZ 0203 - Fit Steel/Pipe/HVAC/Elect Penetrations	25d	25d	15-Feb-21	19-Mar-21	15-Feb-21	19-Mar-21	-15d
801InS0203Pi01	SZ 0203 - Install Pipework (1559 off) and Hangers	90d	90d	12-Mar-21	20-Jul-21	05-Mar-21	13-Jul-21	-19d
801PS0203Qc01	SZ 0203 - PFO Compartment Inspections	10d	10d	29-Mar-21	13-Apr-21	22-Mar-21	06-Apr-21	-20d
801PS0203Sb01	SZ 0203 - Shotblast and Paint Compartments	20d	20d	14-Apr-21	12-May-21	07-Apr-21	05-May-21	-20d
801PS0202Sb01	SZ 0202 - Shotblast and Paint Compartments	20d	20d	23-Apr-21	21-May-21	23-Apr-21	21-May-21	-22d
801PS0203In01	SZ 0203 - Insulate Compartments	15d	15d	13-May-21	02-Jun-21	06-May-21	26-May-21	-20d
801TeS0203Pi01	SZ 0203 - Pipe Testing	20d	20d	12-Aug-21	08-Sep-21	05-Aug-21	01-Sep-21	-19d
801InS0203Ei04	SZ 0203 - Band Cables / Pack Glands	10d	10d	27-Aug-21	09-Sep-21	20-Aug-21	02-Sep-21	-20d
801InS0202Ei04	SZ 0202 - Band Cables / Pack Glands	10d	10d	31-Aug-21	13-Sep-21	31-Aug-21	13-Sep-21	-22d
801InS0203Ms01	SZ 0203 - Outfit Complete	0d	0d		09-Sep-21		02-Sep-21	-20d
801InS0202Ms01	SZ 0202 - Outfit Complete	0d	0d		13-Sep-21		13-Sep-21	-22d
801CO1530	Commission Auxiliary Systems	30d	30d	14-Sep-21	25-Oct-21	14-Sep-21	25-Oct-21	-22d
801CO1520	First Run Harbour and Emergency Generator	5d	5d	25-Oct-21	30-Oct-21	25-Oct-21	30-Oct-21	-32d
801CO1530	First Run Aux Generator	12d	12d	30-Oct-21	11-Nov-21	30-Oct-21	11-Nov-21	-32d
801CO1540	Main Engine Commissioning	14d	14d	11-Nov-21	25-Nov-21	11-Nov-21	25-Nov-21	-32d
801CO1550	Gearbox Commissioning	14d	14d	25-Nov-21	09-Dec-21	25-Nov-21	09-Dec-21	-32d
801CO1560	CPP Set Up	7d	7d	25-Nov-21	06-Dec-21	26-Nov-21	06-Dec-21	-21d
801CO1570	Propulsion Controls	10d	10d	25-Nov-21	09-Dec-21	26-Nov-21	09-Dec-21	-24d
801CO1580	PTO / PTI	12d	12d	09-Dec-21	21-Dec-21	09-Dec-21	21-Dec-21	-32d
801CO1590	Load Test	21d	21d	21-Dec-21	11-Jan-22	21-Dec-21	11-Jan-22	-32d
801CO1600	PMS Set Up	21d	21d	11-Jan-22	01-Feb-22	11-Jan-22	01-Feb-22	-32d
801CO1620	Bow Thruster Commissioning	6d	6d	01-Feb-22	07-Feb-22	01-Feb-22	07-Feb-22	-32d
801CO1630	Dock Trial	3d	3d	08-Feb-22	11-Feb-22	08-Feb-22	11-Feb-22	-32d
801CO1630	Dock Trial	2d	2d	12-Feb-22	14-Feb-22	12-Feb-22	14-Feb-22	-32d
801CO1640	Dry Dock 2	5d	5d	14-Feb-22	19-Feb-22	14-Feb-22	19-Feb-22	-32d
801CO1800	Dock Trial	1d	1d	21-Feb-22	21-Feb-22	21-Feb-22	21-Feb-22	-24d
801CO1830	MES Trial	1d	1d	21-Feb-22	21-Feb-22	21-Feb-22	21-Feb-22	-24d
801CO1850	Builder Sea Trials	4d	4d	21-Feb-22	25-Feb-22	21-Feb-22	25-Feb-22	-34d
801CO1860	Owners Sea Trials	9d	9d	25-Feb-22	06-Mar-22	25-Feb-22	06-Mar-22	-34d
801CO1670	Defect Clearance	15d	15d	06-Mar-22	21-Mar-22	06-Mar-22	21-Mar-22	-34d
801CO1690	LNG Bunkering	15d	15d	18-Mar-22	02-Apr-22	18-Mar-22	02-Apr-22	-34d
801CO1680	LNG Tank Commissioning	12d	12d	21-Mar-22	02-Apr-22	21-Mar-22	02-Apr-22	-34d
801KM1069	801 - LNG Bunkering Complete	0d	0d		04-Apr-22		04-Apr-22	-24d
801CO1700	LNG Dock Trial	15d	15d	04-Apr-22	19-Apr-22	04-Apr-22	19-Apr-22	-35d
801CO1710	LNG Sea Trial	9d	9d	20-Apr-22	29-Apr-22	20-Apr-22	29-Apr-22	-35d
801KM7500	801 - LNG Sea Trial Complete	0d	0d		29-Apr-22		29-Apr-22	-22d
801KM7510	801 - Delivery	0d	0d		29-Apr-22		29-Apr-22	-22d
801CO1720	Delivery	0d	0d		29-Apr-22		29-Apr-22	-22d

Zone 02 – Walkways, Hotwork & Pipework are all now on the critical path. Schedule will be reforecast once there is a collective understanding on the impact of the following:

- Covid-19 Stop Work period
- Covid-19 Resource restrictions



9c. Ship 802 Critical path

Activity ID	Activity Name	OD	RD	Start	Finish	BL Project Start	BL Project Finish	Total Float	Gantt Chart																							
									Q4 2021	Q1 2022	Q2 2022	Q3 2022	Q4 2022	Q1 2023	Q2 2023	Q3 2023	Q4 2023	Q1 2024	Q2 2024	Q3 2024	Q4 2024	Q1 2025	Q2 2025	Q3 2025	Q4 2025	Q1 2026	Q2 2026	Q3 2026	Q4 2026			
802MAUA116Hw01	Unit A11/6 Prep Full Unit	15d	15d	18-Nov-21*	08-Dec-21	18-Nov-21	08-Dec-21	-63d	■ Unit A11/6 Prep Full Unit																							
802FaUA116Hw01	Unit A11/6 Fab Fab-T Frames, Minor Sub-Assys and Pillars	10d	10d	16-Dec-21	07-Jan-22	16-Dec-21	07-Jan-22	-63d	■ Unit A11/6 Fab Fab-T Frames, Minor Sub-Assys and Pillars																							
802FaUA116Hw03	Unit A11/6 Fab 6 Deck Plating	15d	15d	10-Jan-22	28-Jan-22	10-Jan-22	28-Jan-22	-63d	■ Unit A11/6 Fab 6 Deck Plating																							
802ASUA116Hw01	Unit A11/6 Unit Assembly + Dry Survey	15d	15d	31-Jan-22	18-Feb-22	31-Jan-22	18-Feb-22	-63d	■ Unit A11/6 Unit Assembly + Dry Survey																							
802ASB0011Hw02	Erect Fair and Weld Unit 11/6 to Block	20d	20d	21-Feb-22	18-Mar-22	21-Feb-22	18-Mar-22	-63d	■ Erect Fair and Weld Unit 11/6 to Block																							
802ASB0010Hw03	Erect Fair and Weld Unit 10/7 to Block	20d	20d	04-Apr-22	04-May-22	04-Apr-22	04-May-22	-63d	■ Erect Fair and Weld Unit 10/7 to Block																							
802ERB0010Hw01	Wheelhouse Block Erect, Fair and Weld	25d	25d	05-May-22	08-Jun-22	05-May-22	08-Jun-22	-63d	■ Wheelhouse Block Erect, Fair and Weld																							
802ERUA097Hw09	Unit A9/7 Erect, Fair and Weld	20d	20d	19-May-22	15-Jun-22	19-May-22	15-Jun-22	-63d	■ Unit A9/7 Erect, Fair and Weld																							
802ERUA087Hw01	Unit A8/7 Erect, Fair and Weld	20d	20d	16-Jun-22	13-Jul-22	16-Jun-22	13-Jul-22	-63d	■ Unit A8/7 Erect, Fair and Weld																							
802ERUA77Hw01	Unit A7/7 Erect, Fair and Weld	20d	20d	30-Jun-22	27-Jul-22	30-Jun-22	27-Jul-22	-63d	■ Unit A7/7 Erect, Fair and Weld																							
802KM003	802 Superstructure Complete	0d	0d		27-Jul-22		27-Jul-22	-63d	◆ 802 Superstructure Complete																							
802A6470	Commission Auxiliary Systems	30d	30d	08-Aug-22	16-Sep-22	08-Aug-22	16-Sep-22	-63d	■ Commission Auxiliary Systems																							
802A4910	Launch	0d	0d	26-Aug-22*		26-Aug-22		-29d	◆ Launch, 26-Aug-22*																							
802A4920	First Run Harbour and Emergency Generator	2d	2d	17-Sep-22	21-Sep-22	17-Sep-22	21-Sep-22	-29d	■ First Run Harbour and Emergency Generator																							
802A4930	First Run Auxiliary Generator	4d	4d	22-Sep-22	03-Oct-22	22-Sep-22	03-Oct-22	-29d	■ First Run Auxiliary Generator																							
802A4940	Main Engine Commissioning	5d	5d	04-Oct-22	17-Oct-22	04-Oct-22	17-Oct-22	-29d	■ Main Engine Commissioning																							
802A4960	Propulsion Controls	10d	10d	18-Oct-22	31-Oct-22	18-Oct-22	31-Oct-22	-61d	■ Propulsion Controls																							
802A4970	Gearbox Commissioning	5d	5d	18-Oct-22	31-Oct-22	18-Oct-22	31-Oct-22	-28d	■ Gearbox Commissioning																							
802A4980	PTO / FTI	1d	1d	01-Nov-22	04-Nov-22	01-Nov-22	04-Nov-22	-28d	■ PTO / FTI																							
802A4990	Load Test	7d	7d	06-Nov-22	26-Nov-22	06-Nov-22	26-Nov-22	-28d	■ Load Test																							
802A5000	PMS Set Up	7d	7d	27-Nov-22	17-Dec-22	27-Nov-22	17-Dec-22	-28d	■ PMS Set Up																							
802A5010	Bow Thruster Commissioning	2d	2d	18-Dec-22	22-Dec-22	18-Dec-22	22-Dec-22	-28d	■ Bow Thruster Commissioning																							
802A5020	Dock Trial	0d	0d	26-Dec-22	26-Dec-22	26-Dec-22	26-Dec-22	-28d	■ Dock Trial																							
802A5030	Dry-Dock	3d	3d	28-Dec-22	06-Jan-23	28-Dec-22	06-Jan-23	-28d	■ Dry-Dock																							
802A10677	Inclining Exercise	0d	0d	10-Jan-23	10-Jan-23	10-Jan-23	10-Jan-23	-29d	■ Inclining Exercise																							
802A5040	Builder Sea Trials	1d	1d	11-Jan-23	14-Jan-23	11-Jan-23	14-Jan-23	-29d	■ Builder Sea Trials																							
802A5050	Owners Sea Trials	1d	1d	15-Jan-23	17-Jan-23	15-Jan-23	17-Jan-23	-29d	■ Owners Sea Trials																							
802A5070	Defect Clearance	5d	5d	18-Jan-23	31-Jan-23	18-Jan-23	31-Jan-23	-29d	■ Defect Clearance																							
802A5080	LNG Tank Commissioning	4d	4d	01-Feb-23	12-Feb-23	01-Feb-23	12-Feb-23	-29d	■ LNG Tank Commissioning																							
802A5090	LNG Bunkering	2d	2d	08-Feb-23	12-Feb-23	08-Feb-23	12-Feb-23	-28d	■ LNG Bunkering																							
802A5100	LNG Dock Trial	2d	2d	14-Feb-23	18-Feb-23	14-Feb-23	18-Feb-23	-29d	■ LNG Dock Trial																							
802A5110	LNG Sea Trial	1d	1d	20-Feb-23	22-Feb-23	20-Feb-23	22-Feb-23	-29d	■ LNG Sea Trial																							
802A5120	Delivery	0d	0d		27-Feb-23*		27-Feb-23	-54d	◆ Delivery																							

19. Subcontractor Status

General Status

- [redact] - Pipe installation progressing in 0201, 0202 and 0203
- [redacted] continue with cable uncoiling and work in ECR, Bow Thruster compartment and installing cable ladders on mezzanine deck
- [redacted] are now insulating on Deck 5 and starting preparatory works for Deck 6
- [redacted] are ongoing with preparatory work, with increased team due on site in June

Key Issues in month

- Access to subzone 0201 has now been resolved
- Penetration compliance review has resulted in Stop Work on burning new penetrations in Zone 2
- Resolution with [redacted] on HVAC penetrations on aluminium bulkheads required
- Forecast date for re-baseline to be issued
- Volume of modification sheets for Zone 2 pipework – review being completed to scope size of change package to be completed
- Material for closers
- Axilock replacements

[redacted]

- Updated 801 programme delivered 09 April
- Delay of 3 weeks posted due to delay in manufacturing start at subcontractor supplying bellows. ([redact] approval issues)

19. Subcontractor Status - [redacted]

Key Activities

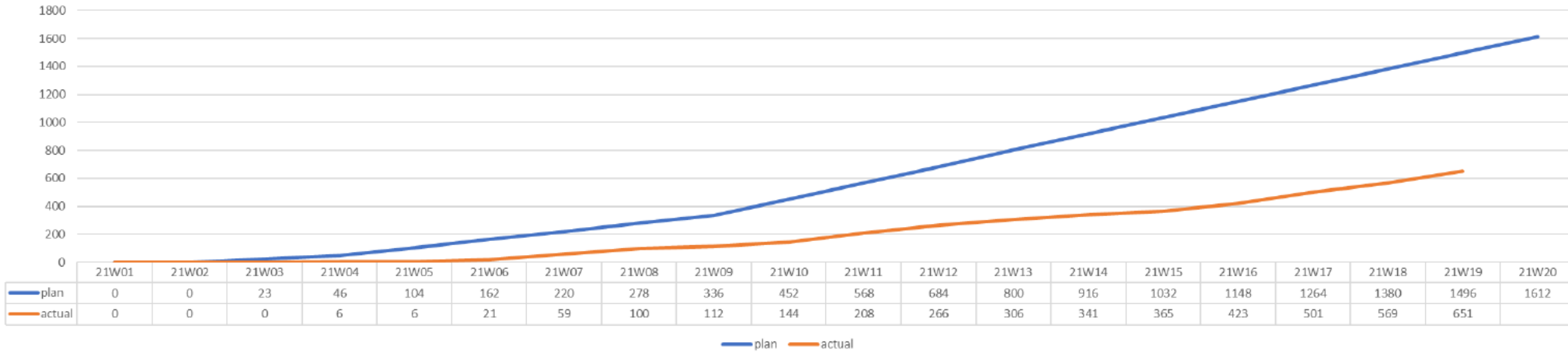
- Installation in 0201, 0202 and 0203
- **5380** hours (93 [redacted] manweeks) spent to date on legacy work - Axilocks and realigning / installing already claimed fitted pipes – approx. 5 weeks of schedule
- Performance against Plan - curves to be reviewed when re-baseline is struck

Open Issues

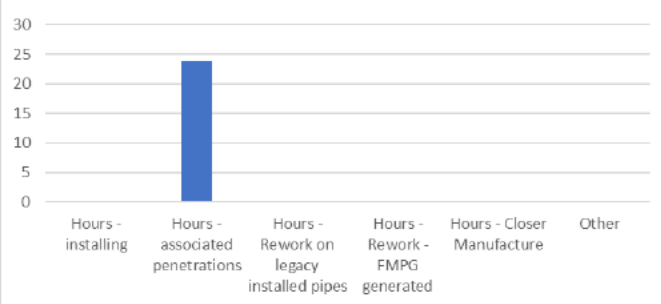
- Provision of single system isometrics will reduce supervision time at desk / printing – await delivery from [redacted]
- Gaskets / Bolts – need min / max system in place – shortages being reported – provide Procurement with initial fill and then use on board Kanban to replenish
- To achieve planned completion, we need to support [redacted] to achieve installation rate of ~130 pipes / week
- Nightshift support to allow commencement of pressure testing (this will be needed for zone 3 also)
- Review of volume of change in Zone 2 & Zone 3 – review underway to identify scope to complete
- Penetrations – completion of change package required to ensure [redacted] can progress

19. Subcontractor Status - [redacted]

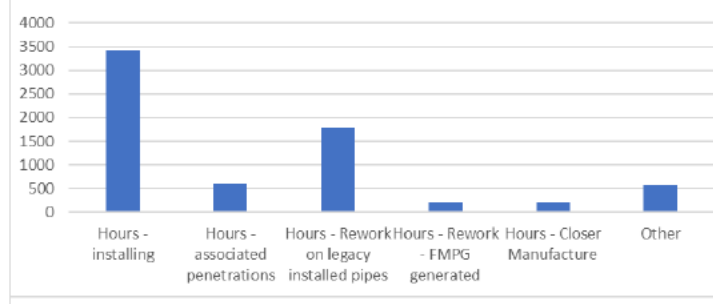
Pipes installed



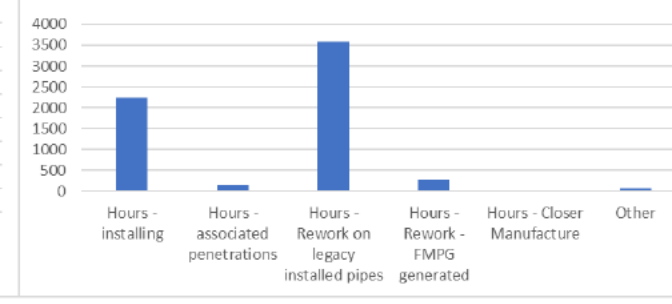
Subzone 0201 - Hours distribution



Subzone 0202 - Hours distribution



Subzone 0203 - Hours distribution



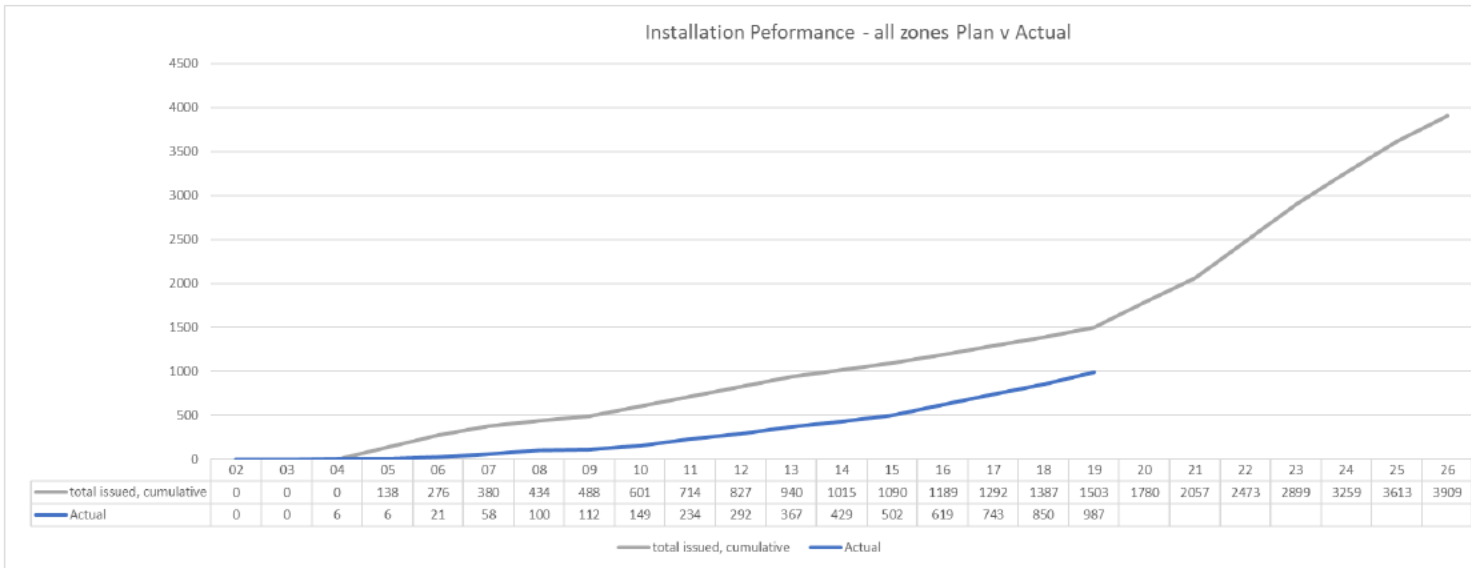
19. Subcontractor Status - [redacted]

Zone 2																			
Pipe count																			
SZ0201							SZ0202							SZ0203					
Week No	# pipes installed						# pipes installed						# pipes installed						
	M	T	W	Th	F	W/E	M	T	W	Th	F	W/E	M	T	W	Th	F	W/E	
2104	0	0	0	0	0	0	0	0	3	3	0	0	6	0	0	0	0	0	0
2105	0	0	0	0	0	0	0	0	0	0	0	0	0	0	0	0	0	0	0
2106	0	0	0	0	0	0	0	0	0	7	6	2	15	0	0	0	0	0	0
2107	0	0	0	0	0	0	5	8	8	7	7	2	37	0	0	0	0	0	0
2108	0	0	0	0	0	0	9	7	8	9	8	0	41	0	0	0	1	0	0
2109	0	0	0	0	0	0	0	0	4	4	4	0	12	0	0	0	0	0	0
2110	0	0	0	0	0	0	4	2	2	10	12	0	30	2	0	0	0	0	0
2111	0	0	0	0	0	0	4	6	3	10	3	0	26	8	12	6	8	4	0
2112	0	0	0	0	0	0	7	9	8	6	5	0	35	6	4	6	4	3	0
2113	0	0	0	0	0	0	2	4	2	4	4	0	16	6	4	6	4	4	0
2114	0	0	0	0	0	0	1	2	2	5	5	0	15	2	4	2	7	5	0
2115	0	0	0	0	0	0	3	3	2	4	2	0	14	2	2	2	2	2	0
2116	0	0	0	0	0	0	7	9	7	9	3	0	35	4	6	6	4	3	0
2117	0	0	0	0	0	0	5	9	10	12	5	0	41	7	9	4	10	7	0
2118	0	0	0	0	0	0	5	8	7	6	3	0	29	10	8	6	4	11	0
2119	0	0	0	0	0	0	9	7	10	7	6	0	39	11	12	8	6	6	0
2120																			
2121																			
2122																			
2123																			
2124																			
Total in subzone	138						1050						1852					3040	
previously claimed	14						167						351					532	
running total	0						391						263					654	
To Go	124						492						1238					1854	
%age Complete	10%						53%						33%					39%	

18. Pipe Installation – FMPG & [redacted]

Overall

- Pipe Installation in Zone 02 and Zone 03 is underway using FMPG & [redacted] resource
- Installation rate slow to start due to legacy rework activities being progressed as priority
- Overall pipe installation curve shown below (for 801 & 802), measuring plan v actual
- Issues around penetrations have hampered progress for pipe installation teams
- Currently ~ 516 pipes behind Plan (against rebaseline, ~220 behind plan)
- Requisition raised to extend [redacted] to complete Zone 2
- Impact of Modification Sheets to be finalised



19. Pipe Status – Zone 3

Zone 3										
	SZ0301	SZ0302	SZ0303	SZ0304	SZ0305	SZ0306	SZ0307	SZ0308	SZ0309	Total
Week No	# pipes installed	# pipes installed	# pipes installed	# pipes installed	# pipes installed	# pipes installed	# pipes installed	# pipes installed	# pipes installed	
2104										0
2105										0
2106										0
2107										0
2108										0
2109										0
2110			5							5
2111			13	8						21
2112										0
2113			31	4						35
2114			23							23
2115			9	6			3			18
2116			13							13
2117			11				4			15
2118			11		10		5	8		34
2119		6	23	15	3		2			49
2120										0
2121										0
2122										0
2123										0
2124										0
Total in subzone to fit	59	9	284	150	84	223	108	76	145	1138
previously claimed	0	0	0	0	0	0	0	0	0	0
running total	0	6	139	33	13	0	14	8	0	213
To Go	59	3	145	117	71	223	94	68	145	925
%age Complete	0%	67%	49%	22%	15%	0%	13%	11%	0%	19%

19. Subcontractor Status - [redacted]

Key Activities

- Bow Thruster – Dress Cabling, Gland Cables, Install Cable Idents ([redacted])
- ECR – Re-Pack Transits ([redacted]), Dress Cabling and Gland & Test Cables.
- LNG – Dress Cabling, Gland, Terminate & Test, install Containment, [redacted] Cabling in [redacted]
- Deck 4 – Main Cable Route Containment Commenced
- Carry out Electrical Continuity Testing/Proving of existing Cabling (installed by others) and Reroute/install coiled cabling that has been installed in wrong locations.

Open Actions

- Looking to open up more workfaces, Deck 5 being insulated IWO main cable runs to open this area up to [redacted] (once first fix [redacted] has been fitted by FMPG)
- [redacted] have prepared their programme of activities, which will be issued once re-baseline is issued
- Await [redacted] switchboard mark ups for [redacted] changes
- Concerned with FMPG stores call-off procedure.

[redacted]

[redacted]

14. Risks – Top 10

	Risk Description	Controls in Place	Current Impact	Current Likelihood	Current Risk Score	Action Planned	Risk Owner	Change explanation
88	COVID-19 - there is a risk that the ongoing effect may impact the yard or its suppliers	Revised onsite social distancing and mask policies New amenities brought in to allow for increase in labour Most office staff now working from home	50	5	250	Social distancing rules remain extant. Easing of lockdown should reduce the likelihood of further COVID related incidents within the yard.	[redacted]	All production staff have returned to work 08/02. Planning team has returned to work Increase in labour planned for May
37	Late delivery of 801/802	Risks associated with late delivery are captured elsewhere in the risk register with planned controls.	50	5	250	1. Include a time allowance for programme slippage 2. To be reviewed due to production suspension, 801 drydock extension, and labour shortfall	[redacted]	Potential programme impact to 801 as a result of poor hull paint system requiring extension to second dry docking Concern around labour and production suspension impact to programme A revised programme has been produced and will be reviewed and signed off end April/early May
85	Unable to recruit or retain Production staff in the required numbers, with suitable qualifications and experience	Resource plans from revised programme, together with yard plan Allowance against market rates reviewed.	50	5	250	1. Include allowance for potential increase 2. Part of annual wage negotiations 3. Develop the programme resource demand 4. Produce a yard resource plan showing all projects 5. Develop a resource supply strategy 6. Assumes subcontract labour will be provided at same internal rate 7. Extra supervision may be required	[redacted]	
70	Insufficient capacity for pipe manufacture and installation to support the programme	Programme demand from plan based upon installation rates and compartment capacities Pipe painting facility set up in Greenock to complete painting of bought-in pipes	50	5	250	1. produce plans for subcontract of pipe manufacture - plan shows pipe made out company only closing pipes 2. produce plans for permanent and contractor installation labour plan based on yard install 3. Produce specific plan for manufacture and instalation of hydraulic pipework required to be out contracted	[redacted]	Should be able to place new orders soon - likely for 802. Behind because of legacy work.

14. Risks – Top 10

	Risk Description	Controls in Place	Current Impact	Current Likelihood	Current Risk Score	Action Planned	Risk Owner	Change explanation
38	Programme launch date of 802 not met	Risks associated with late launch are captured elsewhere in the risk register with planned controls.	50	5	250	<ol style="list-style-type: none"> 1. Include time allowance for programme slippage (same as late delivery) 2. To be reviewed due to production suspension and labour shortfall 	[redacted]	Currently linked to 801 programme. To be reviewed
14	Level of rework not sufficiently scoped. Known rework not fully scoped. Unknown rework will occur particularly during the test and commissioning phase	CNs and 200 series included in programme Change control process implemented. OORs incorporated into model	50	5	250	<ol style="list-style-type: none"> 1. Completion of re-baseline evaluation 2. Allow additional time in the commissioning programme 	[redacted]	Rework is being separately identified through planning rework codes Legacy rework, and new rework, continues to be identified. Current concerns have been axilocks, non Lloyds approved use, and penetrations
84	Impact to the programme of the implementation of the Public Procurement process	Procurement plan in place	50	5	250	<ol style="list-style-type: none"> 1. Increase procurement headcount 2. Allow for time in the programme 	[redacted]	Public Procurement process is embedded in the business.
55	Failure of equipment during warranty period. Supplier guarantees have expired	Warranty controls and spreadsheet is live to allow ongoing review of current position	50	5	250	Warranty review meeting completed and information shared on all live warranties: where warranty is no longer able to be extended (Wartsila) a care and maintenance plan will be put in place.	[redacted]	Wartsila OY back on contract. Surveys ongoing to define care and maintenance required.
46	Vessel cannot meet contract deadweight	Lightship weight continues to grow	50	5	250	<ol style="list-style-type: none"> 1. Continue to limit weight growth wherever possible and practical 2. Commercial impact subject to the contract provisions 	[redacted]	Weight calculations ongoing with updated information. ICE will be contracted to supply information for newly modelled items.
90	Lack of robust Stop Work Process	Stop work register now in place.	50	5	250	engineering have produced an stop work process and register, this is being rolled out.	[redacted]	Change impact increased to 50 as this is becoming a concern. Process is in place however this is being reviewed to ensure it is effective.

[redacted]

16. Variations to Contract

Description	Additional Cost 801	Additional Cost 802	Programme Allowance 801	Programme Allowance 802	Weight Allowance 801	Weight Allowance 802	Status	VTC Forecast Date
Removal of Oily Water Separator	-	-	-	-	-1.88 T	-1.88 T	Closed	
Removal of 1 air compressor, 1 air receiver, and 1 air dryer	-	-	-	-	-1.1 T	-1.1 T	Closed	
Removal of 2 LO purifiers for Diesel Gen	-	-	-	-	-1 T	-1 T	Closed	
Removal of Vapour Return Line	-	-	-	-	-	-	Closed	
Supply of Window Washing Equipment	[redacted]	[redacted]	-	-	-	-	Closed	
Removal of Condition Monitoring System	-	-	-	-	-	-	Closed	
Change of Supplier from Kongsberg to Wartsila	-	-	-	-	-	-	Closed	
Removal of 24V AC system	-	-	-	-	-	-	Closed	
Raindrop Ventilation Change	-	-	-	-	-	-	Closed	
Panama Eye Removal	-	-	-	-	-	-	Closed	
802 Thermostatic Valves	-	[redacted]	-	-	-	-	CMAL to respond	26/05/2021
Provision of Workshop Tools	[redacted]	[redacted]	-	-	-	-	FM to send VTC	01/06/2021
Accommodation Fresh Water Fire Main							Open	24/06/2021
Sliding Weathertight Doors Deck 7							Open	24/06/2021
Additional Shore Supply Connection 802							Open	24/06/2021
Sanitary System Discharge							Open	CMAL to confirm